

Learning from the Experts Webinar Series

Regional Collaboration on Wildlife & Fisheries Research



Lyndie Hice-Dunton, Ph.D.
Executive Director
Responsible Offshore Science Alliance
(ROSA)



Emily Shumchenia
Director, Regional Wildlife Science Entity
Northeast Regional Ocean Council
(NROC)

September 15, 2021

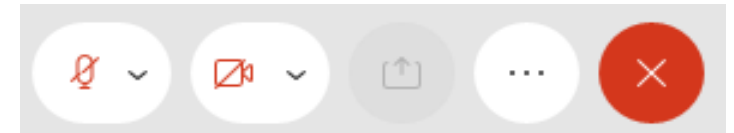
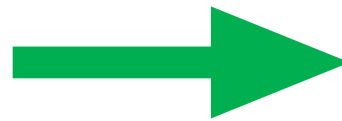


Meeting Procedures

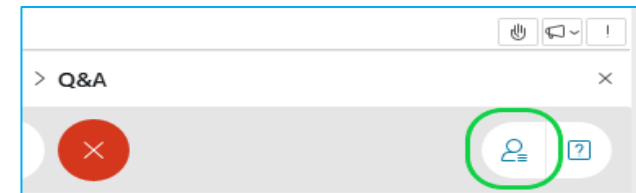
Webinar recordings and presentations will be available at:
www.nyserda.ny.gov/osw-webinar-series

Participation for Members of the Public:

- > Members of the public will be muted upon entry.
- > Questions and comments may be submitted in writing through the Q&A feature at any time during the event.
- > If technical problems arise, please contact Sal.Graven@nyserda.ny.gov



You'll see  when your microphone is muted



Learning from the Experts

This webinar series is hosted by NYSERDA's offshore wind team and features experts in offshore wind technologies, development practices, and related research.

DISCLAIMER:

The views and opinions expressed in this presentation are those of the presenter and do not represent the views or opinions of NYSERDA or New York State.



**Learning from the Experts:
Regional Collaboration on Wildlife &
Fisheries Research**

Regional Wildlife Science Entity

Emily Shumchenia, PhD
Director, RWSE

September 15, 2021



NROC
Northeast Regional
Ocean Council

MARCO

MID-ATLANTIC
REGIONAL COUNCIL
ON THE OCEAN

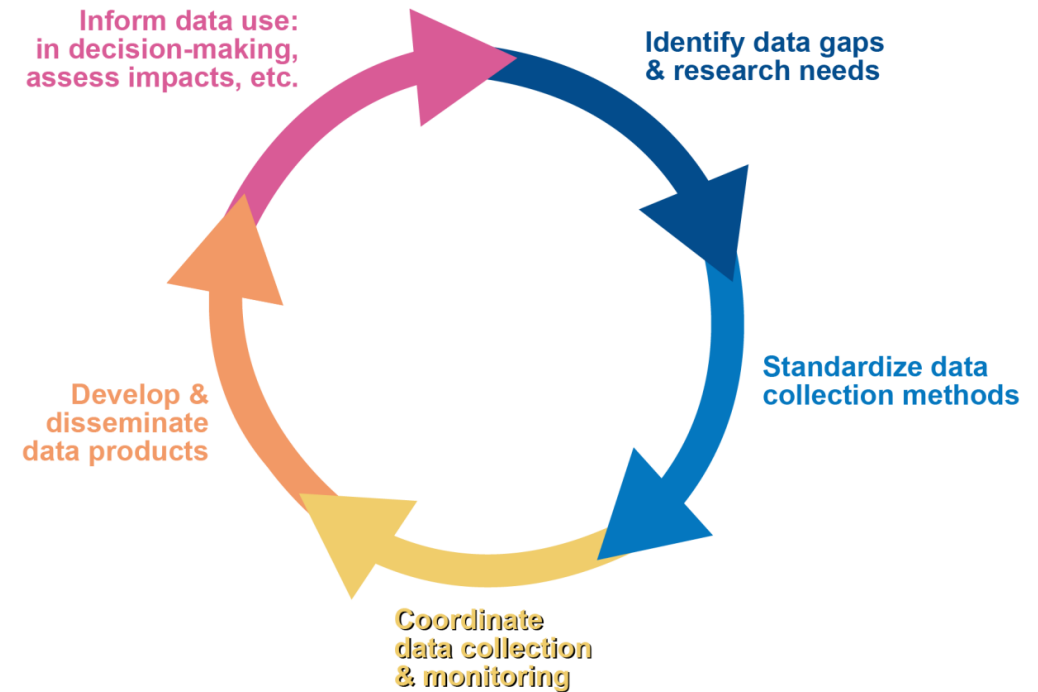




Regional Wildlife Science Entity (RWSE)

Supports research and monitoring on wildlife and offshore wind by:

- Identifying priorities for scientific research and monitoring at the project, regional and ecosystem-wide scales
- Coordinating and aligning funding to meeting those priorities
- Ensuring appropriate data and standards are in place to support science priorities





Why a Regional Wildlife Science Entity?

- Need balanced approach to offshore wind development that includes avoiding, minimizing, and mitigating potential effects on the ocean ecosystem
- Regional scale coordination offers an opportunity for all stakeholders to devise environmental impact study plans to ensure comparable results while satisfying federal and state regulators - leads to greater certainty for developers and lower energy procurement costs for States
- Better understanding of potential impacts and cumulative effects will help build public, and non-governmental organization (NGOs) support
- Multiple benefits and efficiencies from sharing science, standardizing data collection and monitoring protocols, and defining key scientific research needs at the project, regional and ecosystem-wide scales





Brief history

- Since 2019, the New York State Energy Research and Development Authority (NYSERDA), the Massachusetts Clean Energy Center, and a **broad set of stakeholders developed a vision** for a regional science organization to support research and monitoring for wildlife and offshore wind energy
- Cadmus and CBI conducted **7 case studies, held over 55 interviews, facilitated 3 workshops**, and soliciting continuous guidance via regular meetings with the Coordinating Group (NYSERDA, MassCEC, BOEM, NOAA, Shell, Equinor, Natural Resources Defense Council (NRDC), and National Wildlife Federation (NWF))

www.neoceanplanning.org/rwse



NROC
Northeast Regional
Ocean Council

MARCO

MID-ATLANTIC
REGIONAL COUNCIL
ON THE OCEAN





Brief history, continued

- In April 2021, the Interim Steering Committee selected the [Northeast Regional Ocean Council](#) (NROC), [Mid-Atlantic Regional Council on the Ocean](#) (MARCO), and the [Coastal States Stewardship Foundation](#) (CSSF) as host and fiscal agent of the RWSE
 - NROC/MARCO are providing staff
 - Core goals to leverage existing convening/coordination functions within NROC/MARCO, reduce redundancy, and increase efficiencies in conversations about wildlife and offshore wind
- RWSE officially launched in July 2021

www.neoceanplanning.org/rwse

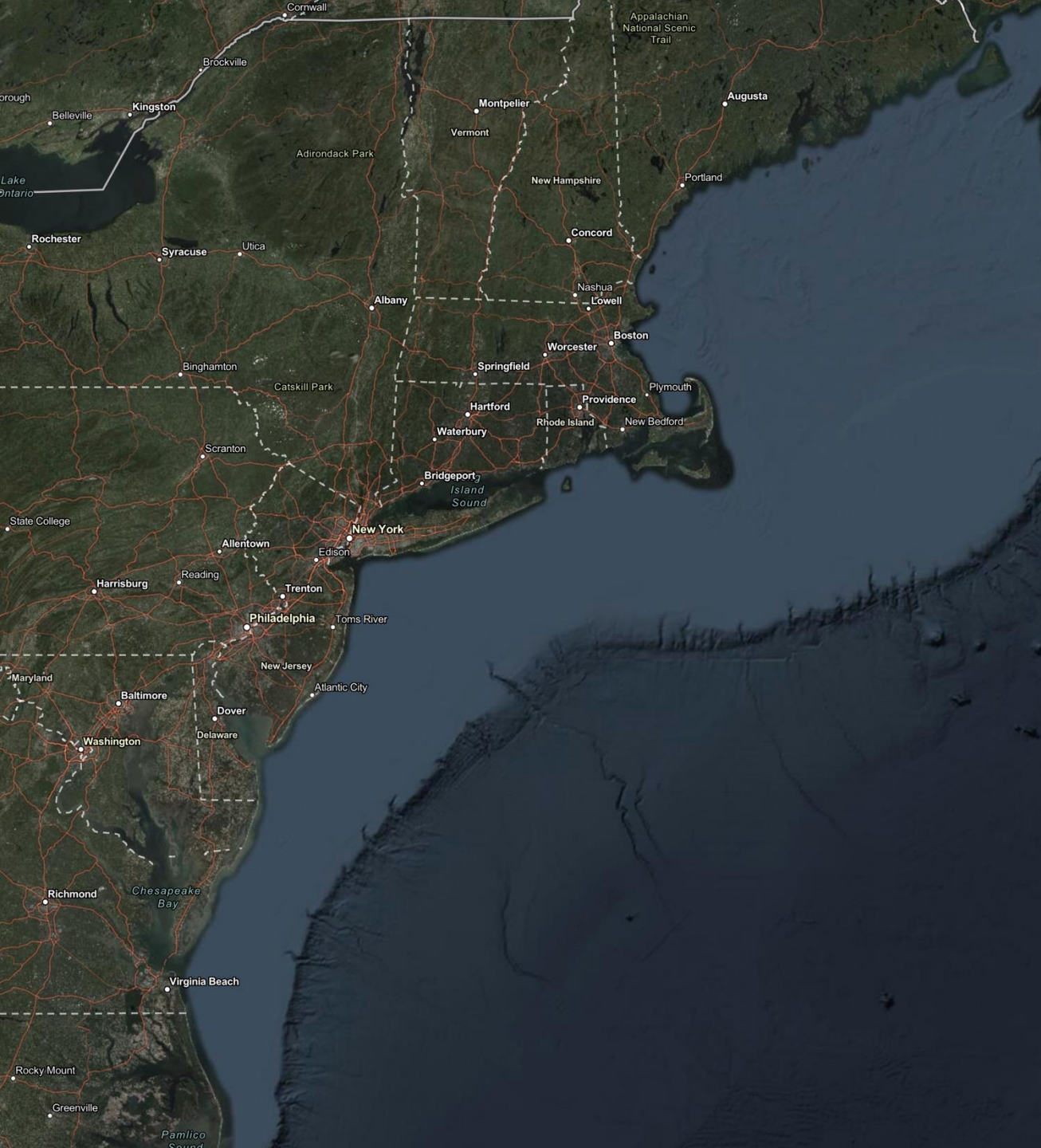


NROC
Northeast Regional
Ocean Council

MARCO

MID-ATLANTIC
REGIONAL COUNCIL
ON THE OCEAN





NROC
Northeast Regional
Ocean Council

MARCO MID-ATLANTIC
REGIONAL COUNCIL
ON THE OCEAN

Formed by the governors of New England and Mid-Atlantic states, respectively

The Regional Ocean Partnerships in the RWSE geographic area of focus

Major functions together and separately:

- Coordinating
- Convening and engaging
- Identifying regional priorities and data gaps
- Fundraising
- Managing initiatives, projects, and contracts
- Facilitating data and information exchange



- Finalizing funding agreements
- Contract/grant admin and reporting
- Fiscal and legal oversight



Outreach to agencies, NGOs, industries, & research community



NROC
Northeast Regional
Ocean Council

MARCO MID-ATLANTIC
REGIONAL COUNCIL
ON THE OCEAN



NORTHEAST OCEAN DATA
www.NortheastOceanData.org

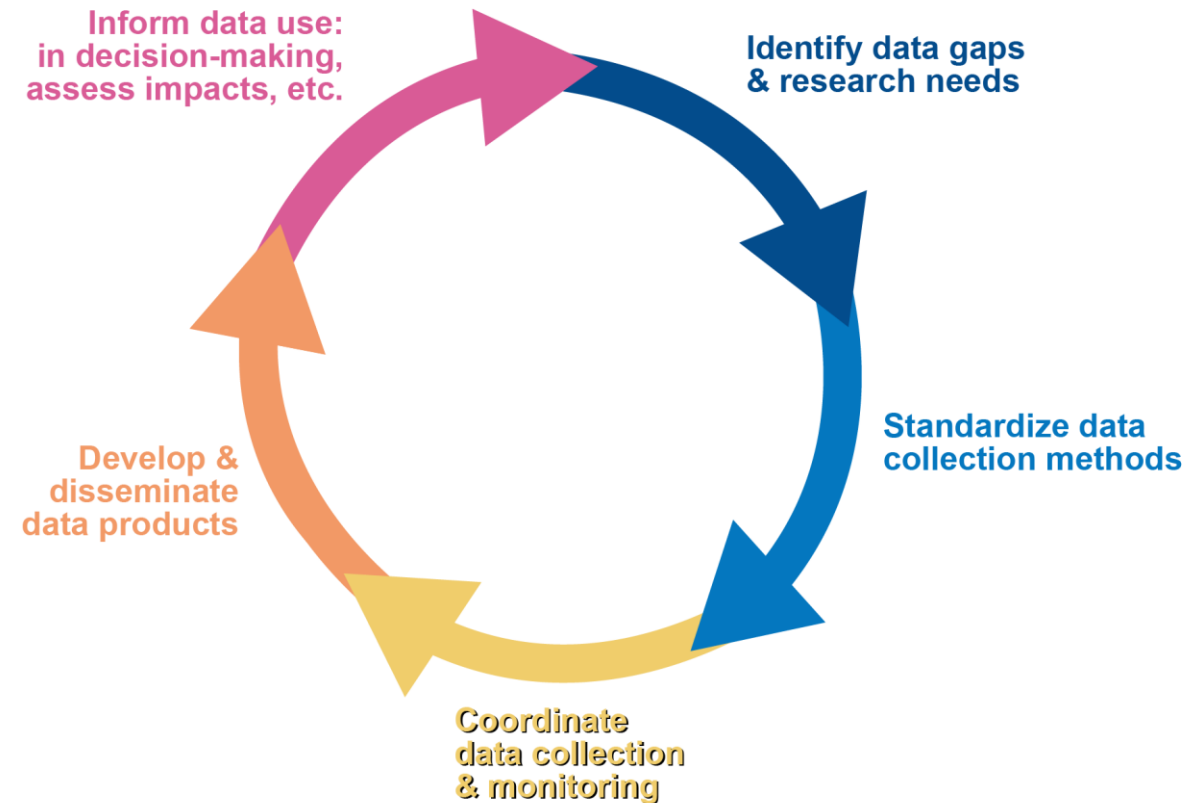
MARCO MID-ATLANTIC OCEAN
DATA PORTAL

NERACOOS
NORTHEASTERN REGIONAL ASSOCIATION
OF COASTAL OCEAN OBSERVING SYSTEMS

MARACOOS
Ocean Information for a Changing World

RWSE Mission

To collaboratively and effectively conduct and coordinate relevant, credible, and efficient regional monitoring and research of wildlife and marine ecosystems that supports the advancement of environmentally responsible and cost-efficient offshore wind power development activities in US Atlantic waters.





Who are RWSE?

Interim Steering Committee:

- Bureau of Ocean Energy Management
- Connecticut Department of Energy and Environmental Protection
- Equinor
- Maine Department of Inland Fisheries and Wildlife
- Maryland Energy Administration
- Massachusetts Clean Energy Center
- National Audubon Society
- National Oceanic and Atmospheric Administration
- National Wildlife Federation
- Natural Resources Defense Council
- New York State Energy Research Development Authority
- Shell

Steering Committee



Director
Emily Shumchenia, PhD



Nick Napoli

Sector Caucuses

Federal agencies

State agencies

NGOs

Offshore wind companies

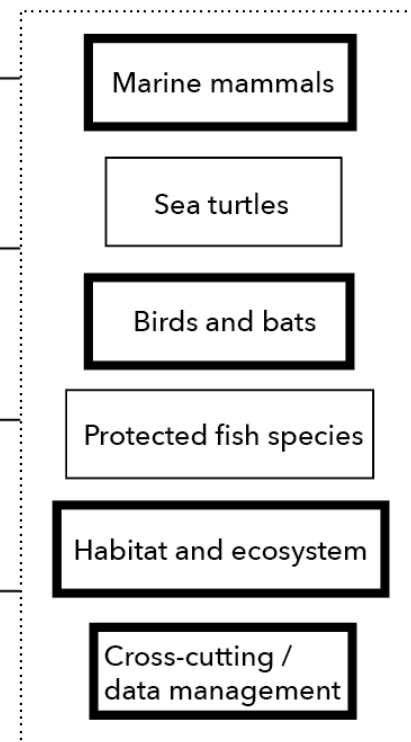
Coordinator & Other Staff
Avalon Bristow



Derek Brockbank
Norma Longhi

Subcommittees

Bold = to be addressed ASAP 2021



Partners, research community, and others



What will RWSE do?

Prioritize and support regional research by:

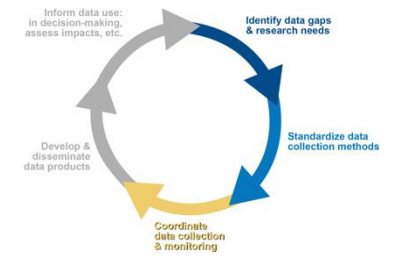
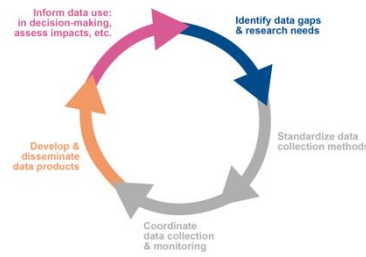
- Maintain sortable database of ongoing pending wildlife research and monitoring by the four Sectors and others
- Develop (with Subcommittees):
 - Taxa-specific lists of wildlife research priorities based on recent workshops/meetings/working groups and emerging needs
 - Guidance for research prioritization across taxa
 - Scopes for projects that address gaps and needs
 - Data collection/standardization protocols
 - Data storage best practices



What will RWSE do?

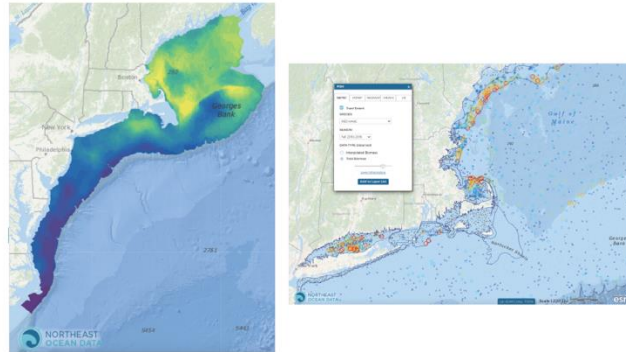
Prioritize and support regional research by:

- Assist with scoping research projects that address regional gaps and needs (with Subcommittees)
- Facilitate discussions about implementing funding and funding strategies with Steering Committee
- Coordinate with funders of regional wildlife research with Steering Committee
- Manage research funds and projects
- Obtain funding commitments for research and/or support other entities in obtaining research funding
- Regularly convene Steering Committee, Sector Caucuses, and Subcommittees to obtain feedback on strategy and support for all of the above



PARTNER ROLES

DATA ACCESS & EXPERT REVIEW



DATA MODELING & MAPPING

MDAT
 NMFS NEFSC
 The Nature Conservancy
 funded by:
 NROC
 MARCO

DATABASE & CURATION

VIMS
 WILLIAM & MARY
 VIRGINIA INSTITUTE OF MARIINE SCIENCE
 NMFS NEFSC
 NE States

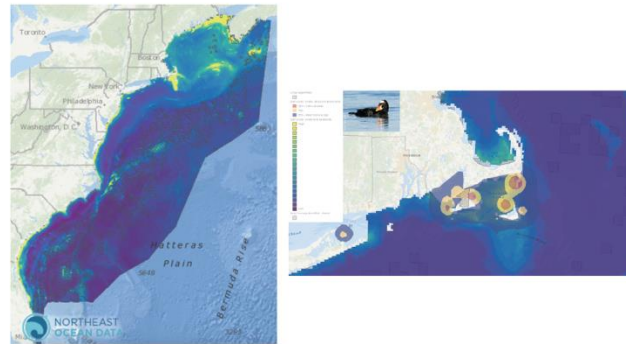
DATA COLLECTION

NMFS NEFSC
 NEAMAP
 State Trawl Data

FISH

Opportunity to coordinate with ROSA!

SEABIRDS

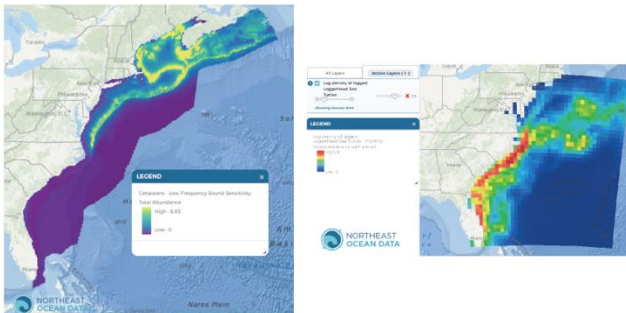


MDAT
 NCCOS
 funded by:
 BOEM
 MARCO

BOEM
 USGS

BOEM
 AMAPPS
 NMFS NEFSC & SEFSC

CETACEANS & SEA TURTLES



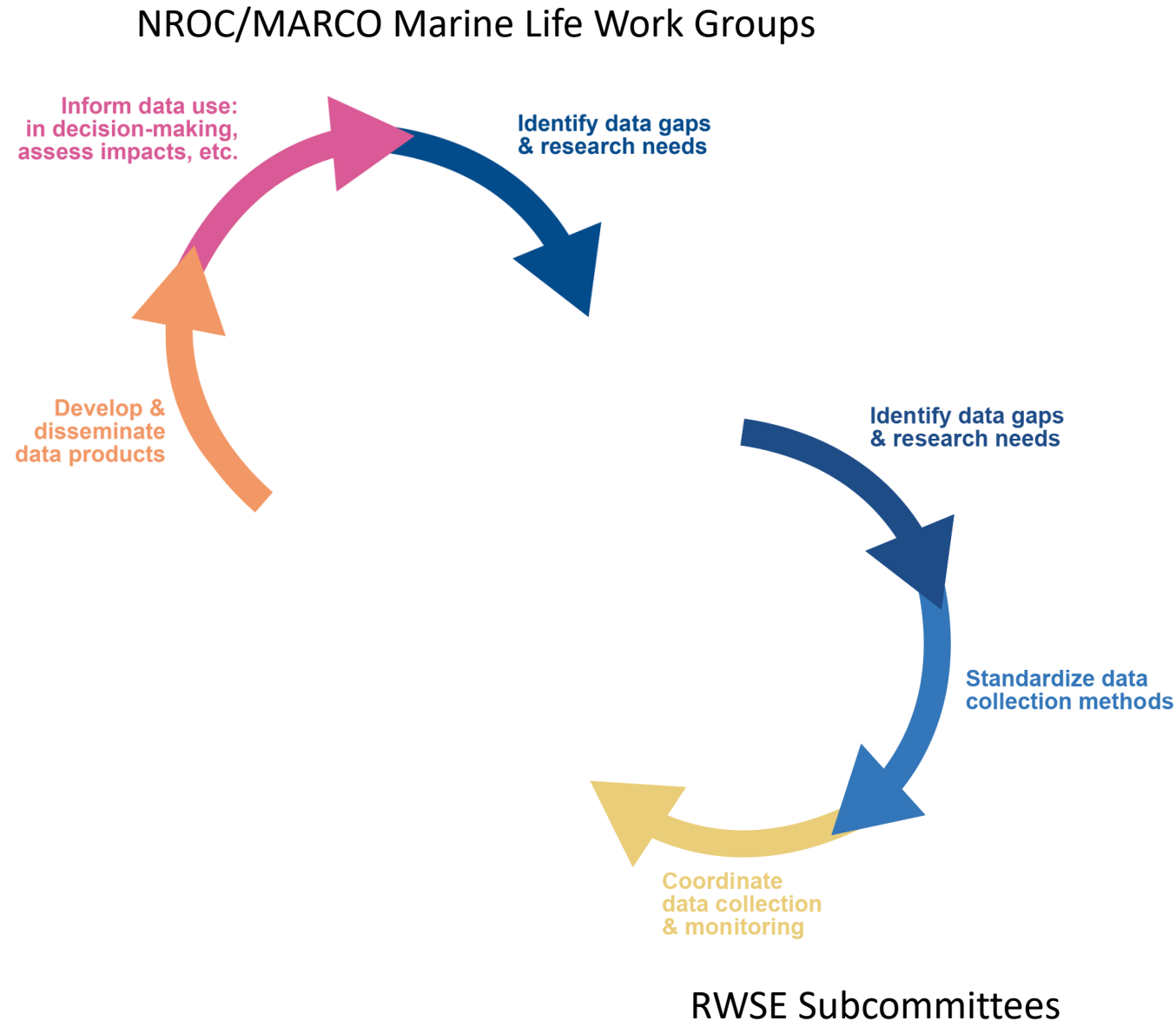
MDAT
 NMFS NEFSC
 funded by:
 NROC
 MARCO

BOEM

BOEM
 AMAPPS
 NMFS NEFSC & SEFSC
 New England Aquarium
 CLEARWATER MARINE AQUARIUM
 HFR

RWSE Subcommittees

- Analogous to NROC and MARCO work groups, particularly the NROC/MARCO Marine Life Work Groups (with Cetaceans & Sea turtles, Seabirds, and Fish subgroups)
- Connect the two sets of groups so that they are **distinct but complementary**, with **beneficial overlap** towards **streamlining workflows** such that research prioritization and data collection result in shared data products that support decision-making and adaptive management and vice-versa





Recent and upcoming activities

Summer 2021 - Interim Steering Committee meets to formalize Governance Structure and Work Plan

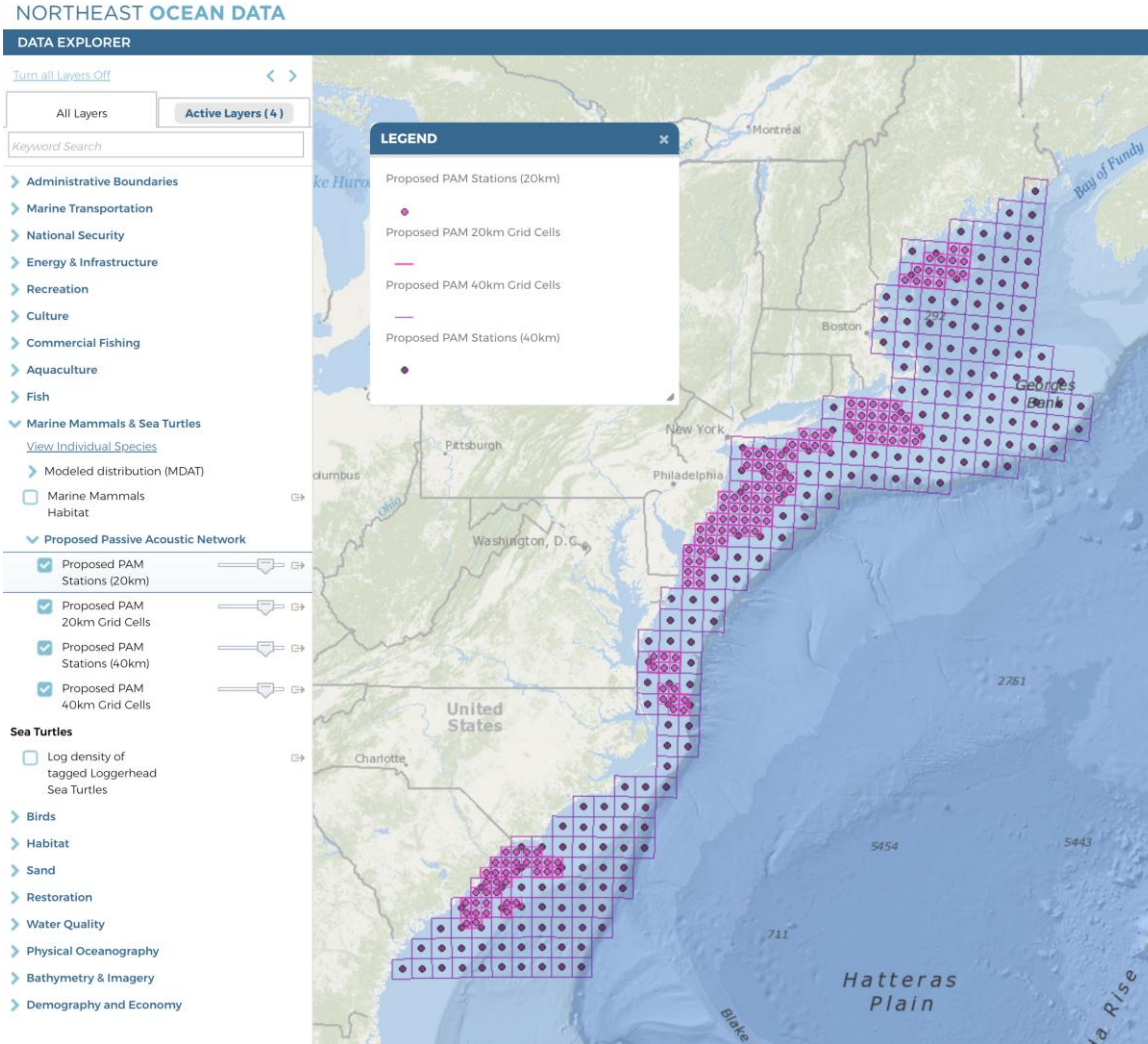
Fall 2021

- Meetings of each Sector's Caucus
- The Interim Steering Committee has identified four expert Subcommittees as high priority to convene in 2021:
 - Marine Mammals
 - Birds and Bats
 - Habitat and Ecosystem
 - Cross-taxa / cross-cutting

Opportunities
to coordinate
with ROSA!



Recent and upcoming activities - example



Supporting discussions and planning for regional Passive Acoustic Monitoring

- Information sharing
- Regional Data Portals
- Workshop, with NOAA, BOEM, RWSE Sectors, late 2021



Regional Wildlife Science Entity (RWSE)

Latest news, information, documents will be posted here:

<https://neoceanplanning.org/rwse/>

Contact information

Emily Shumchenia, PhD, RWSE Director – emily.shumchenia@gmail.com

Avalon Bristow, RWSE Coordinator – avalonbristowmarco@gmail.com

Nick Napoli, RWSE Senior Advisor – nicknapoli01@gmail.com



NROC
Northeast Regional
Ocean Council

MARCO

MID-ATLANTIC
REGIONAL COUNCIL
ON THE OCEAN



Responsible Offshore Science Alliance (ROSA): Regional research and monitoring for offshore wind and fisheries

Lyndie Hice-Dunton, PhD
Executive Director, ROSA

NYSERDA Learning from the Experts Webinar Series
September 15, 2021



RESPONSIBLE OFFSHORE
SCIENCE ALLIANCE

ROSA Background



COOPERATION
COLLABORATION
SCIENCE BASED
DATA DRIVEN

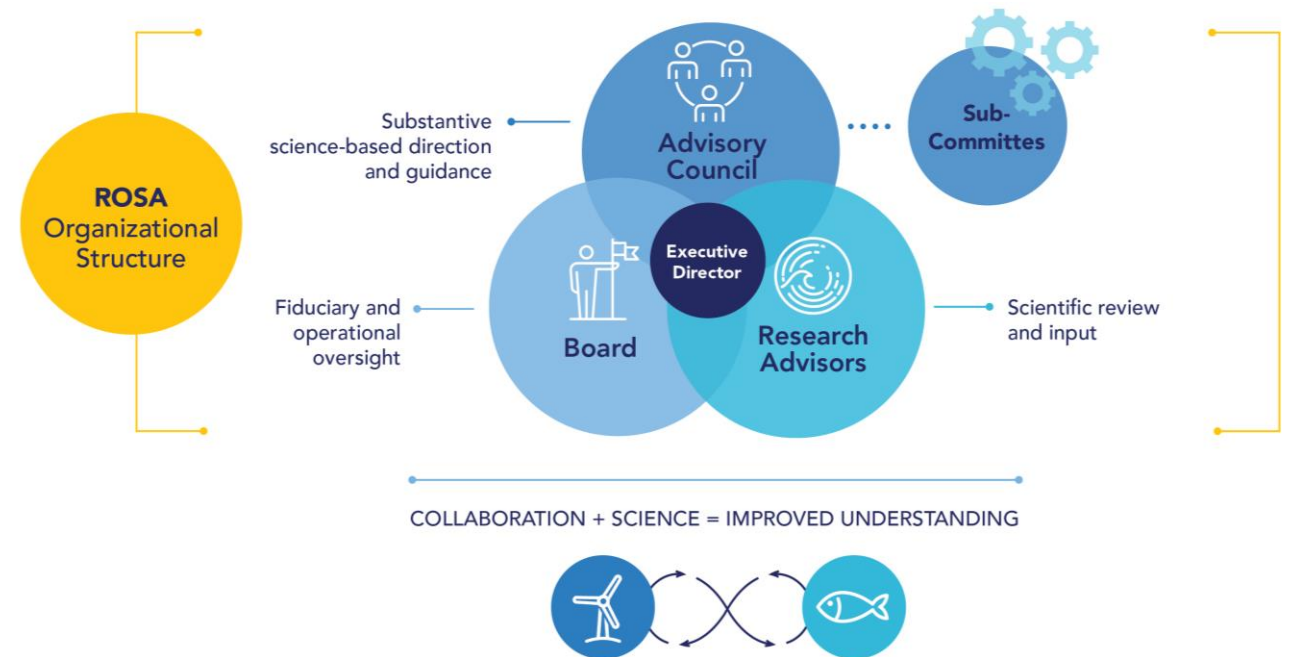
- Recognized need for **coordinated regional science** related to offshore wind development and fisheries
- **Limited capacity** within existing groups and agencies
- Forum needed to **improve cooperative partnerships**
- Need to **increase salient and credible data and improve our knowledge** of the effects of wind energy development on fisheries and ocean ecosystems

ROSA formed in early 2019 as a 501(c)3 through a joint industry partnership between the Responsible Offshore Development Alliance (RODA) and Offshore Wind developers



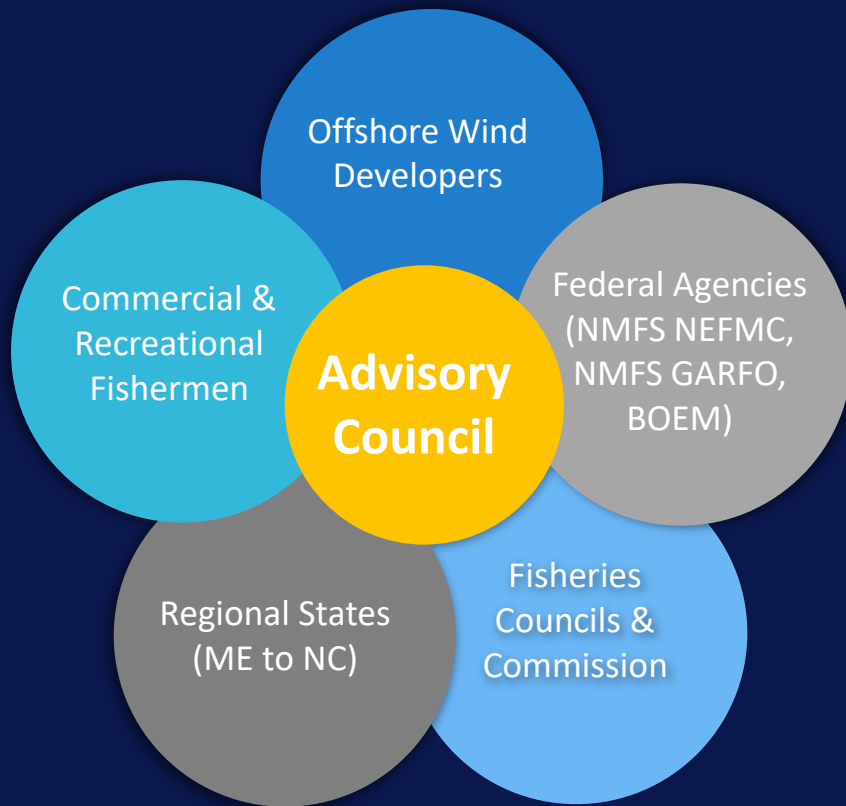
ROSA Objectives

- Identify **regional research** and **monitoring** needs
- Provide a forum for **coordinating existing programs**
- Advance regional understanding through **collaboration, partnerships, and cooperative research**
- Facilitate and improve **standardization** and **access to data** and **administer research**
- **Disseminate research** and **communicate findings**



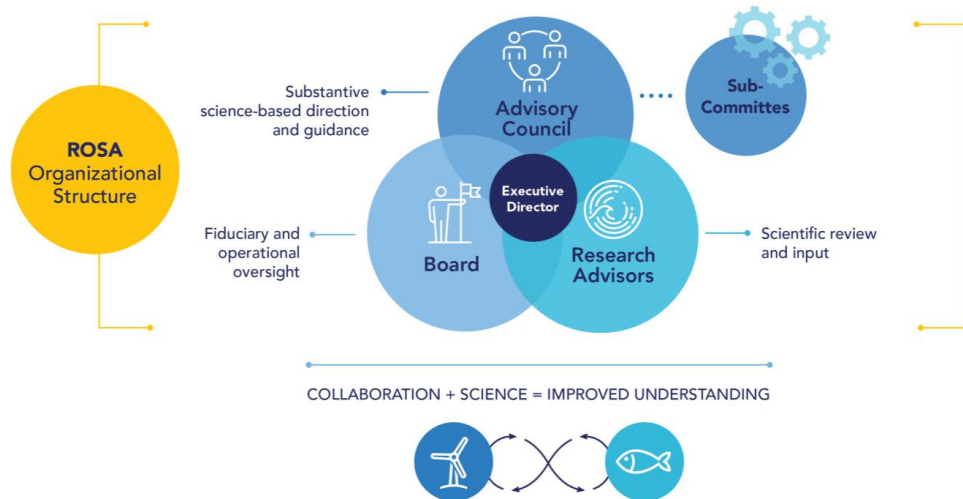
More details at: <https://www.rosascience.org/>

ROSA Advisory Council



- Provides **substantive direction** and **focus**
- Meets quarterly to provide **overall leadership** and **strategic guidance** for ROSA
- Prior meetings: September 2020, November 2020, March 2021, June 2021
 - *Agendas and presentations at rosascience.org*
- Next meeting **1-4 PM EST on September 24, 2021**
 - Primary focus: Regional data collection purpose & goals
- Open to the public- **register at rosascience.org**

ROSA Research Advisors



- Provide **independent scientific input** and **review**
- Help identify **detailed scientific needs** based on Advisory Council direction and committee work
- Contribute to the development of effective and **consistent research and monitoring protocols, standards, and tools**
- Review and assist with developing **Requests for Proposals (RFPs)**
- Provide independent **peer review** as needed
- Serve as **subject matter experts** to contact as needed for scientific input
- Contribute to development and advancement of **scientific integrity** of ROSA activities

ROSA's Role in Offshore Wind Research

ROSA'S MISSION AND GOALS

To provide for and advance regional research and monitoring of fisheries and offshore wind interactions through collaboration and cooperation

- **ROSA focuses on science to inform policy**

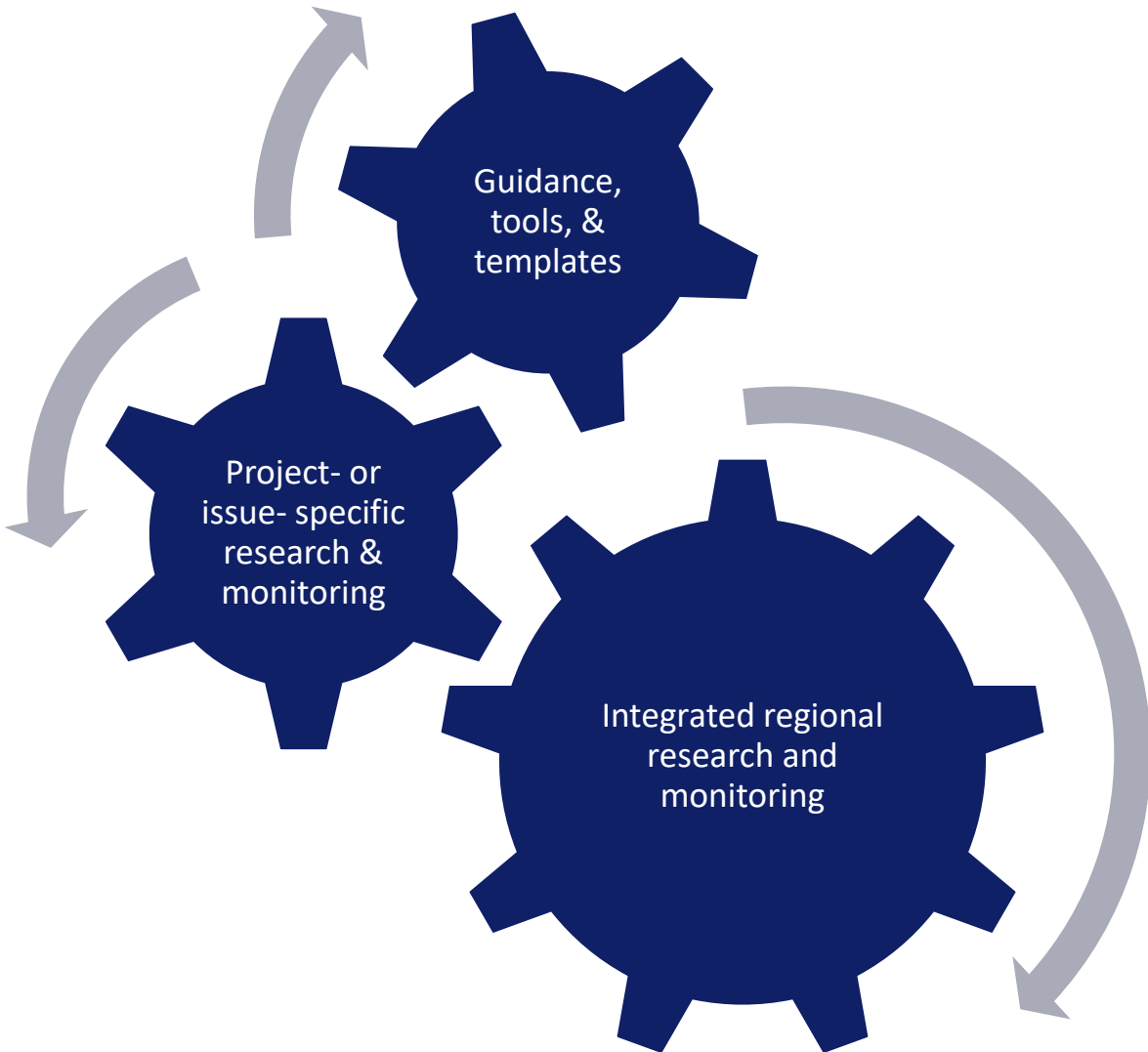
- Empirical studies and collaborative research improve our understanding of potential impacts on species, habitats, ecosystems, and socioeconomics and help **reduce uncertainty**
- Research informs environmental policy and regulatory processes to support **evidence-based decision making**
- Supports research and monitoring requirements in state and federal regulatory processes

- **Collaborative work is central to ROSA's mission**

- Our organizational structure includes offshore wind developers, commercial and recreational fishermen, federal and state agencies, regional fishery management councils and commissions, universities, consultants, non-profits, and others
- Work across sectors to identify priority needs for applied research
- Aim for an **inclusive, transparent, unbiased process**



Strategies for fisheries research & monitoring



- **Guidance, tools, & templates**
 - Monitoring plan guidance & templates
 - Data management & sharing tools
- **Project- or issue-specific research & monitoring**
 - Baseline ecological data & near-term needs
 - Improved coordination and communication across projects
- **Integrated regional research and monitoring**
 - Cumulative impacts
 - Socioeconomics
 - Implications to scientific surveys
 - Development of innovative research tools

Focus on Fisheries Resources: Recent Collaborative Projects

Synthesis of the Science

- **Synthesis of the Science Symposium on Fisheries and Offshore Wind**
- RODA received grant from NMFS to support white paper and symposium
- Partnership through RODA/NMFS/BOEM MOU; ROSA part of planning team
- **Symposium Fall 2020; white paper expected Fall 2021**

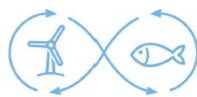
ICES WGOWDF

- **International Council for the Exploration of the Sea (ICES) Working Group on Offshore Wind Development and Fisheries (WGOWDF)**
- Brings together experts from US and Europe; **Meetings held in April 2020 and June 2021**
- **March 2021-** Workshop on the Socio-Economic Implications of Offshore Wind on Fishing Communities (WKSEIOWFC)

Monitoring Guidance

- **ROSA Interim Fisheries Monitoring Working Group** developed monitoring guidance for offshore wind development and fisheries
- Working group included state and federal government fisheries managers, fisheries scientists, fishing industry representatives, and offshore wind developers
- Public comment period Oct. 29-Dec. 1, 2020, document finalized **March 2021**

ROSA Offshore Wind Project Monitoring Framework and Guidelines



- Began in **June 2020** to address need identified by NOAA Fisheries
- Builds upon existing **BOEM guidance** and **member expertise** to highlight **best practices** and elements that could help **improve future monitoring plan submissions**
- After the public comment period, had follow up calls with **US state and federal agencies** to ensure document **aligns with existing regulatory standards**
- Review of comments and agency discussions led to reorganization of document to create a more **comprehensive framework**
- Guidance should be considered a **living document**
- First step of many to improve our **regional coordination** for research and monitoring

Guidance available at: <https://www.rosascience.org/resources>



Framework and Guidance focusing on:



Introduction and Purpose

- **Identifies value added through collaboratively developed framework and guidance such as:**
- Streamlining monitoring plan development and review
- Encouraging standardized protocols and integration of monitoring efforts across multiple spatial and temporal scales
- Encourages proactive engagement, collaboration, and involvement

Monitoring Framework and Principles

- **Describes framework and principles for integrated monitoring approach including:**
- Project monitoring plan components
- Review process and standards
- Expectations and priorities

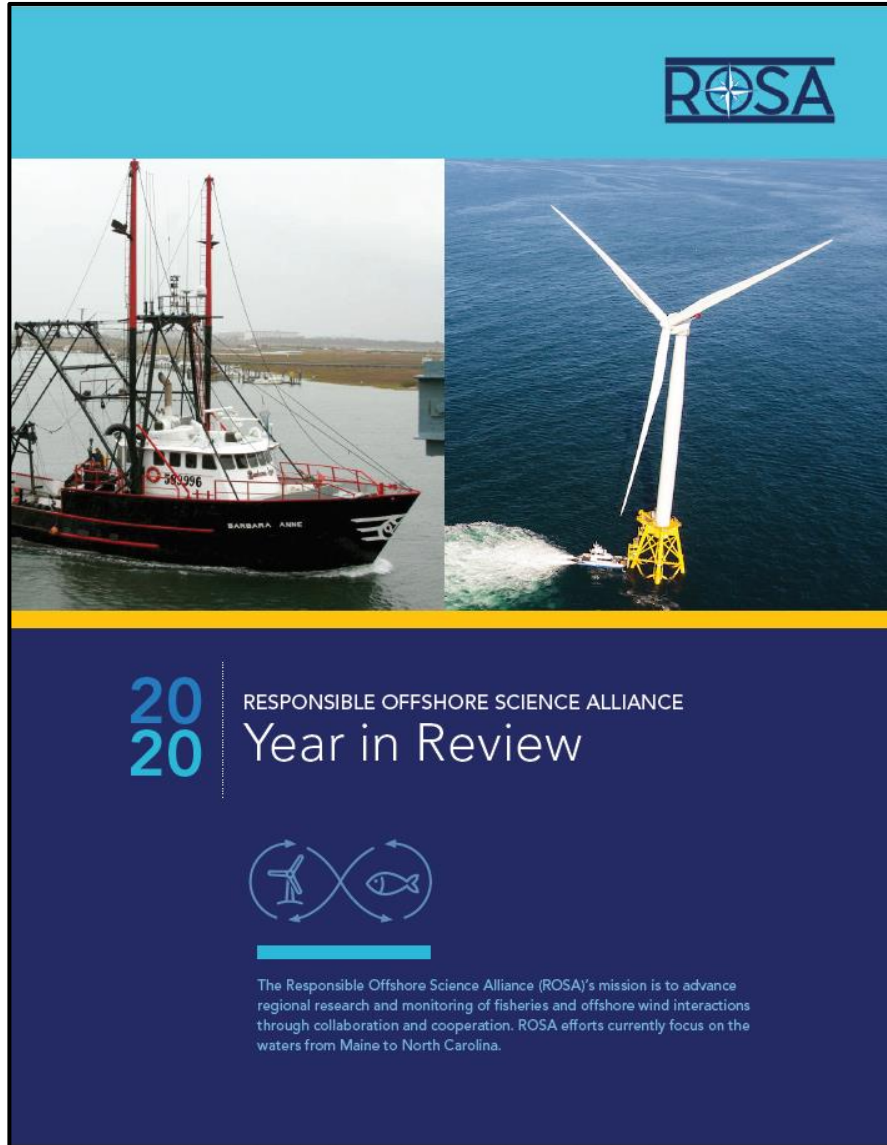
Fisheries Biological Monitoring Studies

- **Outlines key components of fisheries biological monitoring studies including:**
- Objectives and testable hypotheses
- Spatial and temporal scales
- Sampling design and methods
- Data collection and analytical methods

Near-Term Priorities Identified by ROSA Advisors

- Develop **Regional-Scale Framework and Objectives**, building off the outcomes of the Synthesis of the Science
- Define & expand **baseline data** for commercial & recreational fisheries
- Improve **data management, storage, & access**
- Support **standardization of consistent and appropriate fishing gear** to collect baseline and monitoring data
- Identify specific and implementable ways that **fishermen's traditional ecological knowledge** can contribute to and be integrated into various types of offshore wind research
- Develop a **research framework for socioeconomic studies**, building upon the ICES Workshop on the Socio-Economic Implications of Offshore Wind on Fishing Communities (WKSEIOWFC)
- Expand Offshore Wind Project **Monitoring Framework and Guidelines**

For more information



[ROSASCIENCE.ORG](https://rosascience.org)

- Organizational details, research & monitoring resources
- Info on previous and future Advisory Council meetings
- Sign up for our mailing list!



Contact us:

- Dr. Lyndie Hice-Dunton, Executive Director:
Lyndie@rosascience.org
- Dr. Mike Pol, Research Director:
Mike@rosascience.org





Regional Wildlife Science Entity (RWSE)



- How are we similar and different?
- How will we collaborate?
- What can stakeholders expect from us?
- How will we communicate?

How are we similar and different?

- Stakeholder-driven governance models
- Support, coordinate, and encourage regional science and monitoring
- Address offshore wind and ecosystems

ROSA

Established in early 2019 as a 501(c)3

Focus on fish and commercial and recreational and fisheries



RWSE

Established in July 2021 as a research collaborative

Focus on wildlife (protected species, including whales, sea turtles, and birds)



Different sets of stakeholders and management/regulatory contexts

How will we collaborate?

Collaborate on developing consistent approaches to science where it makes sense

- Study design
- Data collection
- Data management

ROSA & RWSE focal species share ocean habitats

- Characterize habitats consistently
- Think together about predator/prey and other ecological relationships



Artie Raslich, Gotham Whale

What can stakeholders expect from us?

ROSA Executive Director and RWSE Director will continue to meet monthly to ensure coordination and awareness/inclusion in each entity's activities

- Coordinate timing of meetings and projects to be respectful of individuals involved in both efforts
- Identify projects and initiatives that might benefit from collaboration and how staff, committees, and consultants can engage to produce the best outcomes for each entity and offshore wind science
- Frequent communication with stakeholders

How will we communicate?

	ROSA	RWSE
Updates on all activities as well as those specific to our partnerships	https://www.rosascience.org	https://neoceanplanning.org/rwse
Email newsletter	<input checked="" type="checkbox"/>	<input checked="" type="checkbox"/>
Other	At Advisory Council meetings as appropriate	Via Sector Caucus meetings

Q&A

We want your feedback! Send suggestions for future webinar topics to offshorewind@nyserda.ny.gov.