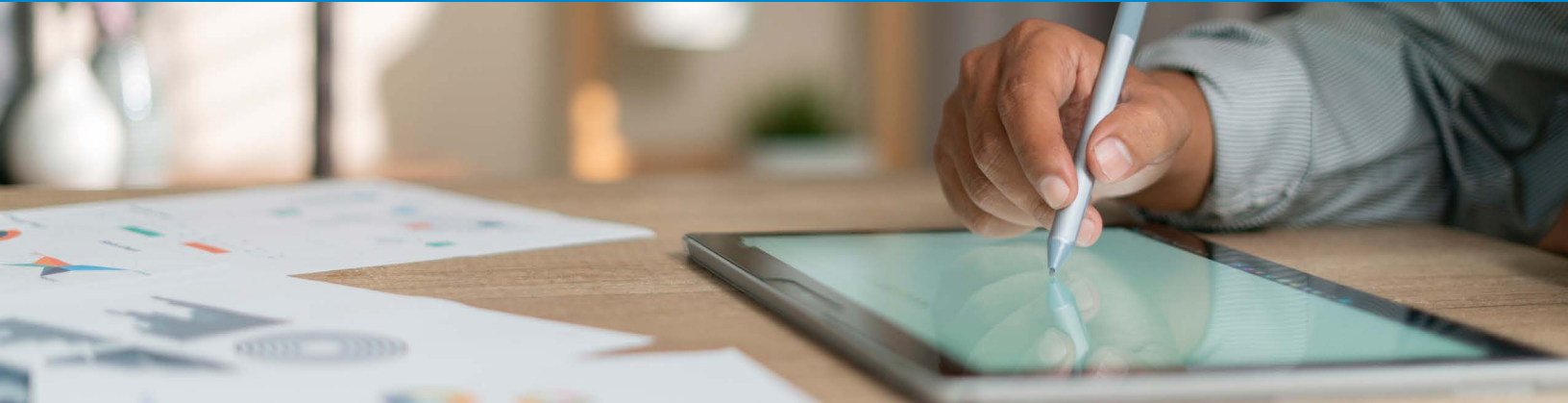


Clean Energy Workforce Development

Building Operations & Maintenance – Overview



Get more out of your building with NYSERDA's **Building Operations & Maintenance Workforce Training Program**

IDENTIFY
training needs

PARTNER
with a training organization or develop your own training

SUBMIT
an [application](#)

\$11.5 MILLION
available

Have a Question?

Email the Workforce Development Team at BOM@nyserdera.ny.gov

or visit nyserdera.ny.gov/BOM

Custom, hands-on, and funded training for your facilities team

Fund Building Operations and Maintenance Workforce Training with NYSERDA!

Keeping up with all the requirements for new equipment, new staff, new training, new best practices, and even new tenants can seem overwhelming. However, NYSERDA can help. It offers operations and maintenance (O&M) training initiatives designed to support your transition to clean energy.

Pathways to Improvement

By participating in [NYSERDA's Building Operations and Maintenance Training Program](#), your workforce will be properly trained in today's clean energy systems. With the right workforce training, you can expect:

- Improved indoor air quality and reduced infection transfer rates
- Reduced energy/water use and related costs
- Increased occupant satisfaction
- Improved skilled employee retention due to promotion and career advancement opportunities
- Reduced equipment breakdowns and maintenance costs
- Increased engagement in risk management instead of crisis management
- Compliance with NYC Local Law 97 (or penalty avoidance due to non-compliance)

Funds for Change

By applying to [Program Opportunity Notice \(PON\) 5357](#),¹ employers and building owners can receive funding for the development and implementation of building O&M training programs. Specifically, PON 5357 is aimed at workforce educational strategies, on-site training frameworks, and the tools needed to advance the skills of building O&M workers. It provides funding coverage for 70–90% of these types of project costs, which translates into low out-of-pocket expenditure.



NYSERDA

Additionally, employees' wages can be included in the cost-share even while they are working on project tasks, while in training, and while using equipment specifically designed for training purposes. Training fees offset by a third party can also be included in the cost-share. Have a look at the Project Spotlights below, which illustrate ways that PON 5357 is useful.

Every \$1 of preventive maintenance that is deferred will result in \$4 of expenditures to ultimately repair or replace those building systems.

Through NYSERDA's Building O&M Training Program, thousands of employees have been trained, impacting operations of more than 590 million sq. ft. of floor space. Organizations that applied for funding are already reporting benefits.

1. PROJECT SPOTLIGHT – SL Green

SL Green partnered with Aetos Imaging Systems to develop and deploy an innovative training program using 3D scanning technology and immersive training modules to provide critical operations and maintenance training to approximately 150 members of their facility staff.

2. PROJECT SPOTLIGHT – LOCAL 32BJ TRAINING

Local 32BJ's Training Fund developed and delivered training on HVAC, building management systems, energy efficiency best practices, and information on NYC Local Law 33 on Building Energy Efficiency Ratings to operators at approximately 100 buildings throughout New York.

If your building portfolio has annual energy expenditures of \$1 million or more, now is the time to take advantage of resources offered through PON 5357 and invest in an innovative, forward-looking workforce development program.

Ready to Get Started?

Visit **PON 5357** for more information.

Find a Training Provider to work with in **NYSERDA's Building O&M Training Provider Directory**.

Become familiar with **additional NYSERDA programs** that support building performance and can help New York's organizations achieve significant benefits and savings!

FlexTech Program

Questions: FlexTech@nyserderda.ny.gov

Schedule an energy check-up at: nyserderda.ny.gov/All-Programs/FlexTech-Program

On-site Energy Manager Program

Questions: OnsiteEnergyManager@nyserderda.ny.gov

Hire a dedicated energy manager at: nyserderda.ny.gov/All-Programs/On-Site-Energy-Manager

Strategic Energy Management Program

Questions: energymanagement@nyserderda.ny.gov

Get assistance with a Strategic Energy Management plan at: nyserderda.ny.gov/All-Programs/Strategic-Energy-Management

¹ nyserderda.ny.gov/PON5357

