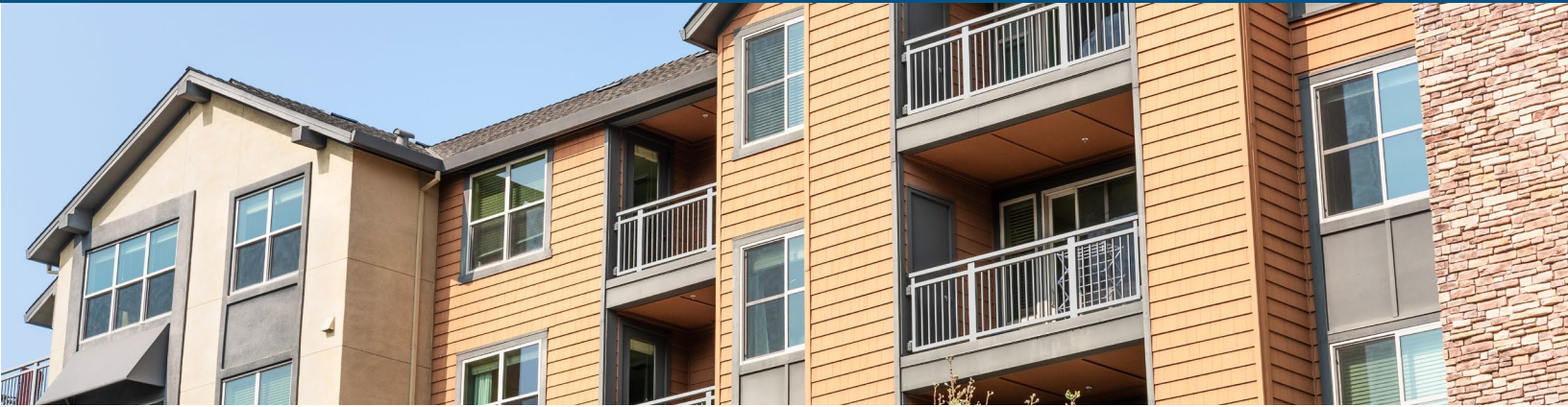


Affordable Multifamily Program Upstate (AMP Up)

Overview



Flexible pathways for multifamily building upgrades focused on energy savings, comfort, and resilience

If you're a multifamily building owner ready to implement energy efficiency upgrades, the Affordable Multifamily Program Upstate (AMP Up) is your one-stop shop. AMP Up offers technical support and incentives for energy efficiency, electrification, and resilience upgrades all in one program.

Key Benefits

AMP Up offers eligible participants comprehensive support, from scoping to project close out.

Benefits of participating include:



Saving energy and money.

Reduce your building's energy consumption and lower utility bills with a wide range of approved upgrades.



Improving tenant comfort.

Weatherization, and other upgrades create a more comfortable living environment for residents.



Increasing property value.

Modernizing your building creates lasting value while resilience enhancements protect against extreme weather.



Accessing a one-stop shop.

Get technical assistance and incentives in a single program. Receive complimentary concierge service to support your projects throughout the project.



NYSERDA
New York State Energy Research
and Development Authority

Two Upgrade Pathways, One Program

AMP Up offers two upgrade pathways. Your pathway will be determined and assigned based on building size(s). Incentives for energy upgrades, access to multifamily participating contractors, access to the concierge service, and additional resilience enhancements are available to both pathways.

Low-Rise Pathway	Large Building Pathway
<ul style="list-style-type: none"> • 3 stories or fewer, AND • 20 units or fewer • Incentive are capped at 85% of project costs 	<ul style="list-style-type: none"> • 4+ stories, OR • 21+ units • Incentives are capped at 70% of project costs

Eligibility Requirements

Building Requirements	Income Requirements
<ul style="list-style-type: none"> • Existing multifamily building(s) must be located in upstate New York.* • There are 5 or more units.** • At least 50% of gross heated square footage is residential. 	<ul style="list-style-type: none"> • At least 25% of units are, or are expected to be, occupied by households earning not more than 80% of Area Median Income (AMI) or State median Income (SMI), whichever is higher. • Income eligibility is determined at the project level. • Both System Benefits Charge (SBC) and non-SBC customers are eligible for the program.

*Buildings located in Con Edison or National Grid KEDLI or KEDNY service areas are **not eligible**.

**Project may span multiple buildings but must have at least 5 units total.

Incentives Per Unit

- Up to \$400 toward refrigerator replacement
- Up to \$1,700 for prescriptive upgrades
- Up to \$2,500 for weatherization
- Up to \$5,750 for electrification
- Up to \$6,750 for deep retrofits
- Additional resilience upgrades

Ready to get started?

Find out more about how the program works, eligibility, incentives, and how to apply.

visit: nyserdera.ny.gov/AMPUp

email: multifamilyprograms@nyserdera.ny.gov

call: 866-NYSERDA



NYSERDA
New York State Energy Research
and Development Authority