

NYSDEC Truck/Bus Scrappage Guidance

This document describes vehicle scrappage requirements required to meet the NYSDEC VW Settlement eligibility.

Truck/Bus Destruction Requirements

Vehicle scrappage is required to fulfill the requirements under the VW Settlement¹. Failure to follow this guidance may impact your ability to receive funding under the New York Truck Voucher Incentive Program (NYTVIP). Please contact NYTVIP staff listed at the end of this document for any questions.

“Scrapped” shall mean to render inoperable, and at a minimum, to specifically cut a 3-inch hole in the engine block for all engines. If an Eligible Vehicle is to be replaced as part of a project, scrapped shall also include the disabling of the chassis by cutting the vehicle’s frame rails completely in half. Post-scrappage materials (e.g., metals) may be recycled.

To destroy the engine:

- Cut or drill a minimum 3-inch hole (approximately the diameter of the NYTVIP supplied sticker) through the engine block.

To destroy the chassis:

- Cut or shear both the chassis rails between the two axles.

The vehicle must be driven to the scrappage location. The vehicle must be operational with the chassis and engine intact. Do not remove anything from the truck/bus except for personal items. The program cannot process VW payments until truck/bus scrappage is satisfactorily completed and documented with “before” and “after” photographs.

Failure to comply with scrappage instructions may result in the denial of VW funding.

Three pieces of information are required:

1. The completed NYTVIP Vehicle Scrappage Certification.
2. Four “before” scrappage photographs (minimum image size of 1200 x 1800 pixels or 4 x 6 inches).
3. Four “after” scrappage photographs (minimum image size of 1200 x 1800 pixels or 4 x 6 inches).

¹ <https://www.vwcourtsettlement.com/wp-content/uploads/documents/DOJ/Approved%20Appendix%20D-2.pdf>

Step-by-Step Instructions

Four Required “Before Scrappage” Photographs

Take a series of before scrappage photographs of the truck or bus.

1. Vehicle (side view of entire vehicle)
2. Vehicle engine (allow some of the truck/bus color to show)
3. Vehicle Identification Number (VIN) plate (VIN must be legible)
4. Engine plate or label showing engine serial number (engine serial number must be legible)

Four Required “After Scrappage” Photographs

After the engine and chassis have been permanently disabled, you will need to take after scrappage photographs of the scrapped truck/bus showing the following:

5. Engine destruction - close-up photograph of the 3-inch hole cut in the engine with NYTVIP supplied sticker clearly visible.
6. Engine destruction - a photograph of the 3-inch hole in the engine and NYTVIP supplied sticker from a few feet back that also includes a little of the truck/bus color. If the engine has been removed from the truck/bus, a picture of the 3-inch hole, NYTVIP supplied sticker and entire engine removed from the truck/bus is acceptable for this photograph.
7. Cut chassis - a close-up photograph of the cut chassis that includes some of the truck/bus color.
8. Destroyed vehicle - a photograph that shows the entire vehicle after engine 3-inch hole and chassis cut.

Photograph Examples

The example scrappage photographs presented below meet NYSDEC VW documentation requirements.

Before Scrappage Photographs

1. Vehicle (side view of entire vehicle).



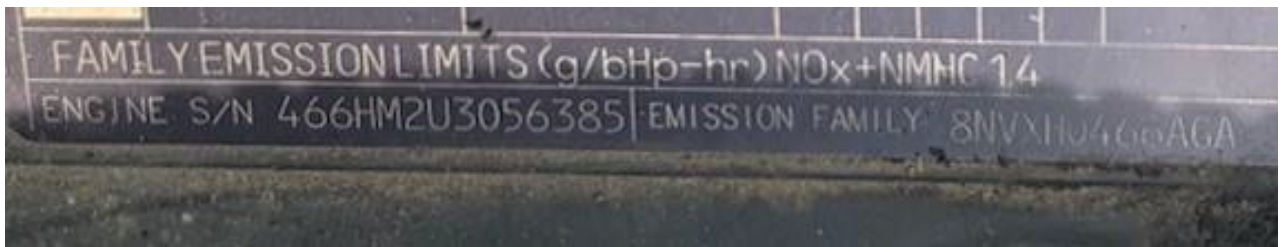
2. Vehicle engine (allow some of the truck/bus color to show).



3. Vehicle Identification Number (VIN) plate or label (VIN must be legible).

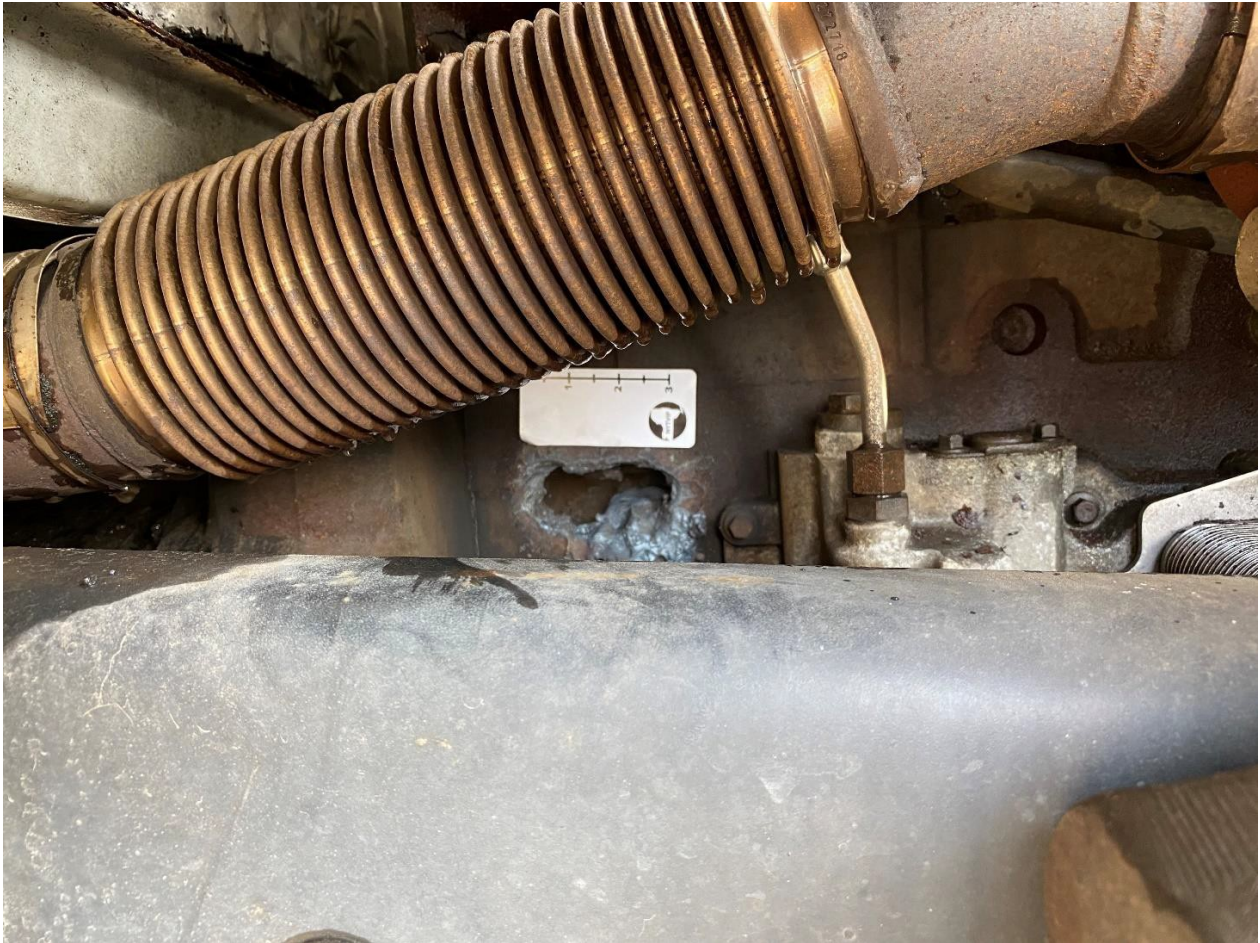


4. Engine plate or label showing engine serial number (engine serial number must be legible).



After Scrappage Photographs

5. Engine destruction - close-up photograph of the 3-inch hole cut in the engine (include NYTVIP supplied sticker in picture).



6. Engine destruction - a photograph of the 3-inch hole in the engine and NYTVIP supplied sticker from a few feet back that also includes some truck/bus color.



OR, if the engine has been removed from the truck/bus, a photograph of the 3-inch hole and NYTVIP supplied sticker. The picture below to be revised with sticker once available.



7. Cut chassis - a close-up of the cut chassis that includes some color of the truck/bus.



8. Destroyed vehicle - a photograph that shows the entire vehicle after engine 3-inch hole and chassis cut. If available, a vehicle identification number (i.e. a DOT number or Bus Identification number) should be visible in this photograph.



Please direct any questions or requests for assistance to the Voucher Help Center (VHC) at 866- 595-7917 or NYTVIP@energycenter.org. The VHC is open Monday through Friday from 9:00 a.m.to 5:00 p.m. Eastern Time, excluding national holidays.