

NYSDA 2022 OFFSHORE WIND SOLICITATION ORECRFP22-1

# Chapter 14 Appendices

Public version

Community Offshore Wind LLC  
Lease OCS-A 0539



## Contents

14-1 Fisheries Stakeholder Engagement Table

14-2 List of Potential Partnerships for COSW Fisheries and Environmental Mitigation Plans

14-3 Fisheries MOUs and Letters of Support

14-4 Commercial fishing activity and active offshore wind lease areas in the New York Bight region

## 14-1 Fisheries Stakeholder Engagement Table

This appendix contains confidential information and is not included in this public version.

## 14-2 List of Potential Partnerships for COSW Fisheries and Environmental Mitigation Plans

This appendix contains confidential information and is not included in this public version.

## 14-3 Fisheries MOUs and Letters of Support

This appendix contains confidential information and is not included in this public version.

## 14-4 Commercial fishing activity and active offshore wind lease areas in the New York Bight region

## Appendix 14-4

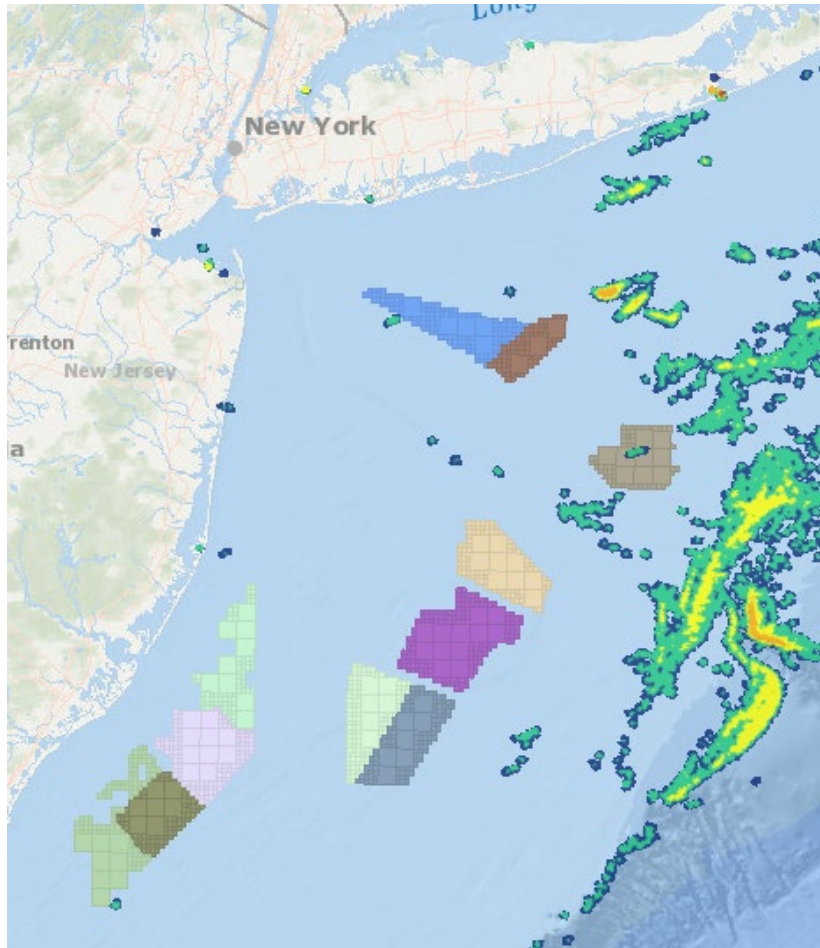
### Commercial Fishing Activity and Active Offshore Wind Lease Areas in the New York Bight Region

These maps were prepared using the Northeast Ocea Data Portal (<https://www.northeastoceandata.org/>).

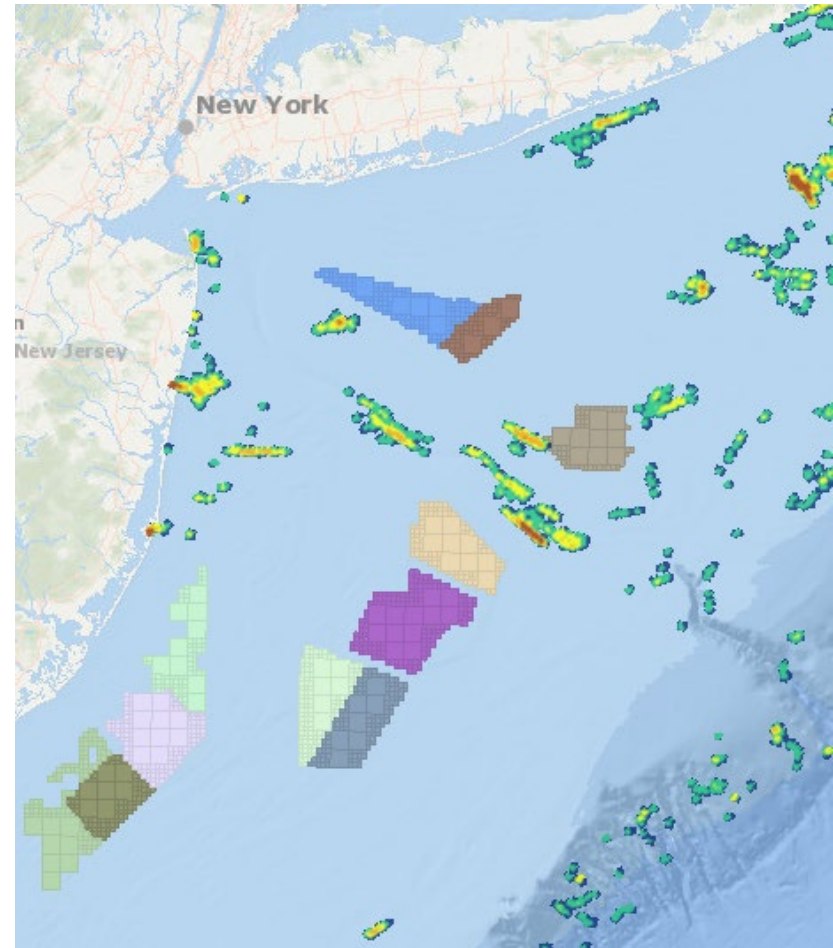
The fishing activity datasets broadly characterize the density of commercial fishing activity for major fisheries in the northeastern U.S. based on fishing vessels with Vessel Monitoring Systems (VMS) from 2015-2016. These are the most recent years available on the data portal website that are filtered for speed. Fishing activity changes annually and these figures only represent a snapshot of fishing location and intensity. These figures are only one source of information used to help identify the primary fisheries that operate within and near the project area, lease area 0539. **In the following maps, lease area 0539, Community Offshore Wind, is shown in purple.**

Description of the commercial fishing datasets: The National Marine Fisheries Service (NMFS) describes VMS as a satellite surveillance system primarily used to monitor the location and movement of commercial fishing vessels in the U.S. These datasets were created using VMS position records for vessels travelling at a speed of less than a certain speed, usually 4-5 knots, which was the speed threshold used to identify vessels engaged in fishing rather than transit activity. This includes vessels in ports despite little to no fishing activity at those locations. Raw VMS data from NMFS were processed into geospatial point products and analyzed to create density grids for select fisheries. The point data were filtered to remove vessel positions which did not meet the "Rule of Three" criteria required by NMFS due to data confidentiality. More information on the data sources and methods are available on the portal website. Data values are standardized and are best interpreted qualitatively. An absence of data does not indicate an absence of fishing activity.

These maps were created using the Northeast Data Portal on December 22, 2022.

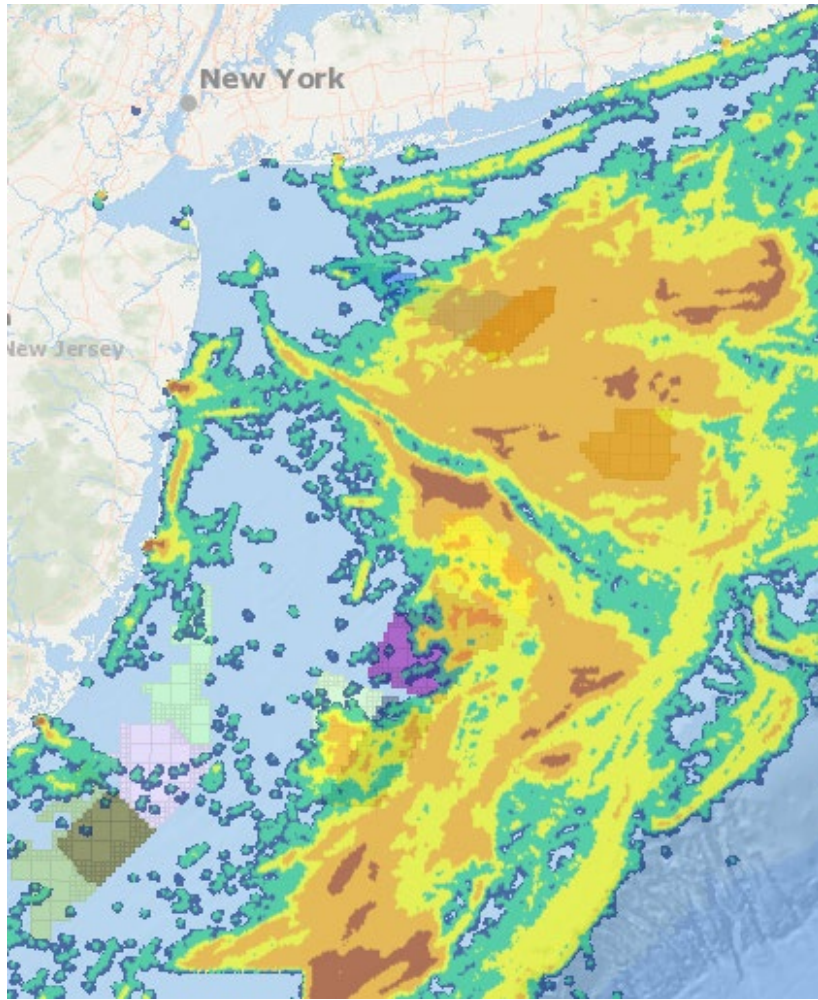


**Figure 1** – 2015-2016 commercial **multispecies** fishing activity (VMS data <4knots) in New York Bight region. Community Offshore Wind, lease area 0539 is in purple.

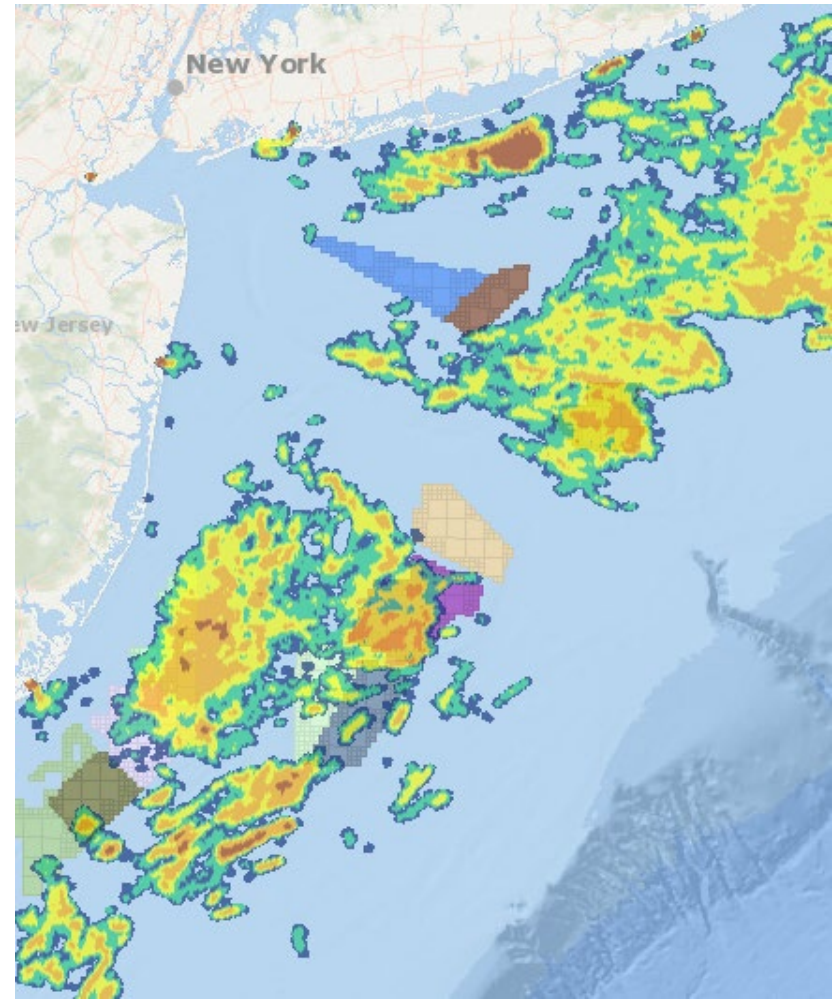


**Figure 2** – 2015-2016 commercial **monkfish** fishing activity (VMS data <4knots) in New York Bight region. Community Offshore Wind, lease area 0539 is in purple.

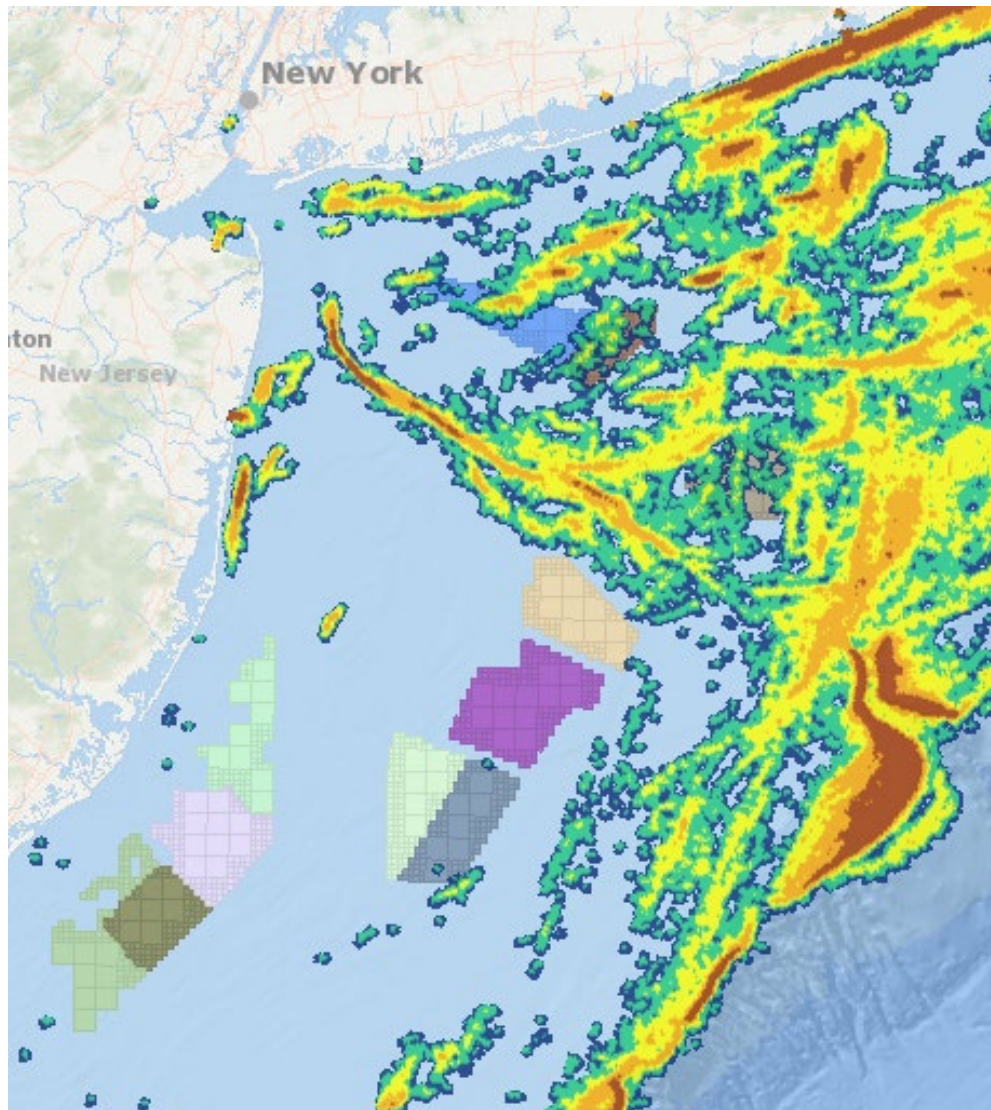




**Figure 3** –2015-2016 commercial *sea scallop* fishing activity (VMS data <4knots) in New York Bight region. Community Offshore Wind, lease area 0539 is in purple.



**Figure 4** –2015-2016 commercial *surf clam/ocean quahog* fishing activity (VMS data <4knots) in New York Bight region. Community Offshore Wind, lease area 0539 is in purple.



*Figure 5 – 2015-2016 commercial pelagics (herring, mackerel, and squid) fishing activity (VMS data <4knots) in New York Bight region. Community Offshore Wind, lease area 0539 is in purple.*