

Photo Documentation Requirements — EB and NC

Accurate photo documentation is essential for program quality control. Due to limited field inspections, reviewers are placing greater emphasis on the accuracy of photo documentation. NYSERDA reserves the right to conduct a field inspection and/or request additional documentation if the photos are insufficient.

New Construction projects must follow the ENERGY STAR® MFHR Testing and Verification Protocols for photo and measure specific documentation. Existing Buildings projects must meet the requirements outlined in the Inspection Protocol section of the Program Guidelines. The Program requires Partners and Providers to inspect and submit separate documentation for each project. Photos for one project may not be used for another even if they have similar scopes of work or are being performed simultaneously.

All photos must be clear with readable labels or nameplates.



Incorrect: The nameplate is illegible.



Correct: You can clearly read the contents of the nameplate.



Incorrect: The depth gauge measurement is unclear.



Correct: You can clearly read the measurement of pipe insulation thickness.

Appliance and equipment photos must include readable photos of the product label(s) and photo(s) showing the quantity installed.



Incorrect: While the ENERGY STAR label and model number are provided, the quantity of installed clothes washers is not clear from the photos.



Correct: This photo template shows the quantity of units, ENERGY STAR label, along with a readable model number.

Photo Documentation Requirements — EB and NC

Insulation photos must clearly show insulation type, thickness, R-value, and proper installation including an overview photo showing insulation location (interior, exterior, etc.).



Incorrect: This photo shows the location of piping and correctly installed pipe insulation, but an additional photo showing pipe insulation thickness is required.



Correct: These photos show proper installation and pipe insulation thickness.



Incorrect: This photo shows poorly installed interior batt insulation, which is slumping and protruding between the studs. This does not meet RESNET standards or program requirements.



Correct: These photos show proper installation and R-value.



Window U-value and SHGC must be included in documentation. If the product sticker does not include this information, spec sheets must be submitted.



Incorrect: This sticker does not provide the required information.



Correct: The U-Value, SHGC, and ENERGY STAR label are on this sticker.

Photo Documentation Requirements — EB and NC



NEW YORK
STATE OF
OPPORTUNITY™

NYSERDA

Projects being completed simultaneously with the same scope of work, or sister projects, must have their own photo documentation and site inspections. Using the same photo for two separate projects, even with the same scope of work, is unacceptable.



Incorrect: The same photos were provided for two separate buildings.



Correct: These sister projects have the same scope of work but have site specific photos.

Photo Documentation Requirements — EB and NC

Measurement photos must show the item being measured by the proper measurement tool (measuring tape, depth gauge, etc.).



Incorrect: These photos show improper measurement methods.



Correct: This photos show the use of a proper measurement tool.

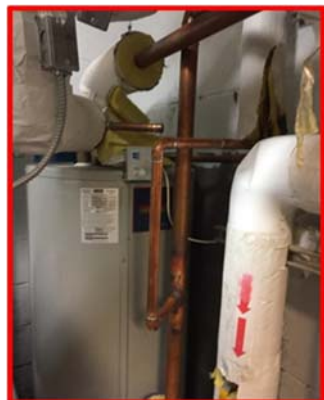


Incorrect: These photos do not show the measurement of the insulation.



Correct: These photos show the insulation types installed and proper measurement techniques.

Photos or on-site indications of incomplete work or improperly installed measures will require follow up photos demonstrating correct installation.



Incorrect: Improper and/or incomplete pipe insulation was seen on site.



Correct: Partner submitted photos with pipe insulation correctly installed in the same area of piping.

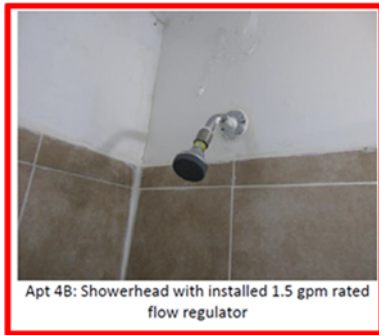
Photo Documentation Requirements — EB and NC



NEW YORK
STATE OF
OPPORTUNITY™

NYSERDA

Photos of low flow plumbing fixtures must show the fixture and the flow rate. If the flow rate is not on the fixture, a photo showing results of a flow bag test must be submitted.

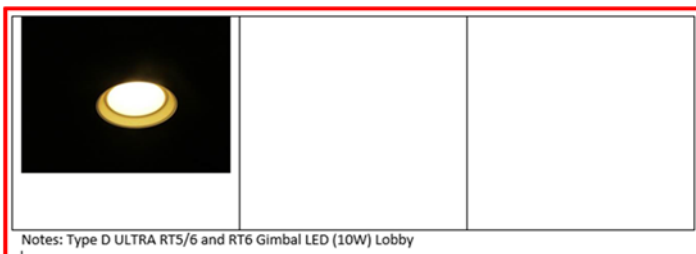


Incorrect: These photos do not show the flow rate of the fixture



Correct: These photos show the flow rate listed on the fixture or with a flow rate bag.

Lighting fixture photos must represent all installed lighting fixtures, show the lamp/LED installed, nameplate or wattage of lamp, and ENERGY STAR label, if applicable)



Incorrect: There are no photos of the lamp's nameplate, wattage, or ENERGY STAR label (if available).



Incorrect: These photos do not show the type of lamp/LED installed.



Correct: The lighting fixture photos above provide all necessary information.