

Affordable Multifamily Program Upstate (AMP Up) Program Training

April 24, 2026

Today's meeting is being recorded and will be available on the Provider's portal and Program Webpage in the near future. Slides will be distributed to all attendees after the webinar.

You have all been muted. Please remain muted unless we call on you during our Q&A session at the designated times of the presentation.

The Chat Function will be disabled. Please use the SLIDO function to ask questions throughout the presentation. Referencing the slide # in your question may be helpful.

Questions submitted through Q&A (in SLIDO) are only visible to the panelists. Questions will be addressed at designated sections in the presentation. Questions will also be added to our Frequently Asked Questions document which will be posted to the program page after the webinar.



- **Introduction to AMP Up**
- **Building eligibility**
- **Coordination with other programs**
- **Incentives**
- **Resilience enhancements**
- **Project journey by stage**
 - Multifamily Energy Portal demonstration

Today's session is a Contractor training session focused on the Contractor Process for participation in AMP Up.

For anyone who is not a NYSERDA eligible provider, please attend our Public Information Session on April 28, 2026. You may sign up to attend this session through our AMP Up Webpage at www.nyserda.ny.gov/ampup

Thank you.

May 5, 2026

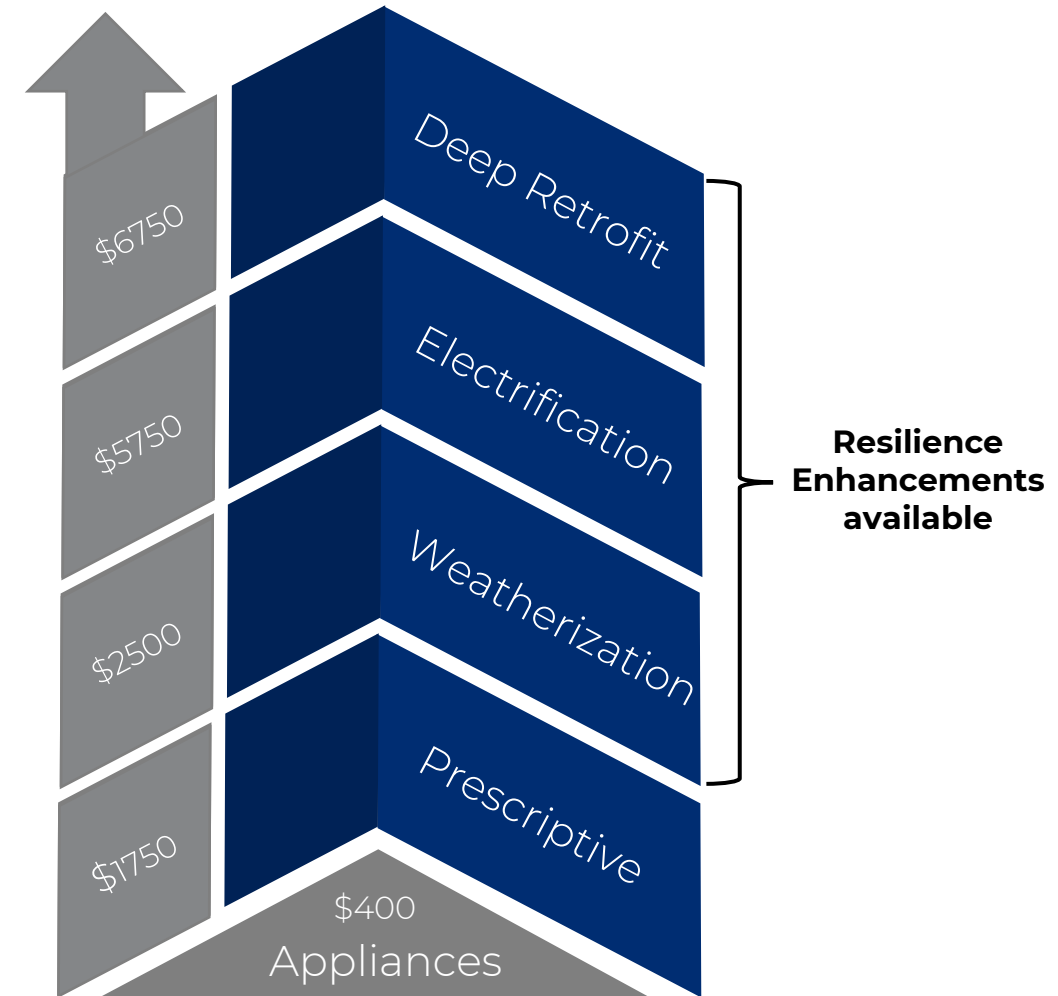
Tools Training for Contractors

Introduction to AMP Up

Affordable Multifamily Program Upstate (AMP UP)

Now Available!

- Offers upstate multifamily buildings incentives for energy efficiency and building electrification upgrades
- Program Goals:
 - Streamline the Customer Journey
 - Provide Flexibility
 - Maintain Tenant Affordability
 - Take an Efficiency First Approach



All program documents can be found on the Program page at

<https://www.nyserda.ny.gov/ampup>

Program Manual

Glossary of terms

Deliverable naming conventions

Measure minimum requirements

Detailed explanation of deliverables

And so much more!

Other Program Documents

Application Documentation

Simulation Guidelines*

Energy Assessment & Scoping Tool

Eligible Measures List & Minimum Performance Standards

Incentive Calculator

Inspection Workbook*

And more!

*available soon

Participating Contractors

Multifamily Contractor Network

Concierge Contractors (through Owner's Rep)

Pipeline Lead Generation

Clean Energy Hubs

- Mohawk Valley (CCE)
- Western NY (PUSH Buffalo)

Community Based Organizations

- Rural Housing Coalition of NY

End-Use Incentive Categories

Appliance rebates

Prescriptive measures

Weatherization measures

Electrification measures

Deep retrofit measures

Resilience enhancement incentives

Non-End-Use Incentive Categories

Technical Assistance

Concierge Services

Building Eligibility

- **Must be in the Upstate region of NYS**
 - Upstate is defined as any property *north of* Con Edison service territory
- **Projects cannot be located Downstate**
 - Projects located in Con Edison or National Grid's KEDNY and KEDLI are not eligible
 - Projects do not have to pay System Benefits Charge to be eligible
- **Project must consist of one or more existing multifamily buildings**
 - Mixed use buildings are allowed, but 50% of the gross heated square footage must be residential or residentially associated
- **Must meet LMI criteria on a project level**
 - 25% of the project must be $\leq 80\%$ AMI or SMI, whichever is higher
- **Must use a NYSERDA Multifamily Contractor or a Concierge Contractor**

A project is defined as a building (5+ units) or group of buildings (2+ units per building, with a minimum of 5 units total) in close proximity with the same building owner/manager implementing a consistent scope of work.

- **Project must have a total of 5 or more units**
 - Any project with >150 units must receive prior authorization before submitting application
- **Eligible project types include substantial renovations (gut rehab). Substantial renovations are defined as:**
 - Change of use and reconstruction of an existing building or space within;
 - Construction work that requires the building or space within be out of service for at least 60 consecutive days;
 - Reconstruction of a vacant structure or space within
- **Projects intending to electrify the building's space heating must meet the program's electrification sensitivity analysis, as defined in the Multifamily Simulation Guidelines**
 - These requirements are meant to protect owners and tenants from increased energy burden due to electrification work
 - Analysis methodology will be provided soon. If you are planning an electrification scope of work before the methodology is released, contact your NYSERDA Project Manager for guidance.

Eligible Measures

Measure Category	Measure
Appliances	Refrigerators (w/Freezer)
Prescriptive	LED lighting upgrades Low-Flow Showerheads Low-Flow Faucet Aerators Thermostatic Shower Restriction Valves Room AC Cover and Gap Sealer H&C, Steam Pipe Insulation Thermostatic Radiator Valves Advanced Thermostat Steam Traps Boiler/Furnace Tune-Up
Weatherization	Roof Insulation Attic Access Insulation Air-sealing Basement Insulation Wall Insulation Duct Sealing & Insulation Window Replacement

Measure Category	Measure
Electrification	H&C Heat Pumps DHW Heat Pumps
Deep Retrofit	Advanced Ventilation with Heat Recovery Envelope Over-cladding
Resiliency Enhancements	H&C Heat Pump Floodproofing DHW Heat Pump Floodproofing Electrical Panel Elevation Electrification for Heat Vulnerable Populations Hurricane Resistant Windows

Coordination With Other Programs

Program Funding

Program	Co-funding the same measure with AMP Up?	Measure costs included in Incentive Cap?	Incentive Adjustments
NYS Clean Heat	No	No	N/A
Other Utility Programs	No	No	N/A
WAP concurrently with AMP Up	Yes	Yes	Combination of AMP Up & WAP funds cannot exceed 100% of total project costs
NYS HCR excluding Clean Energy Initiatives	Yes	Yes	Combination of AMP Up & HCR funds cannot exceed 100% of total project costs
Climate Friendly Homes Fund	Yes	Yes	Combination of AMP Up & CFH funds cannot exceed 100% of total project costs

- In no circumstance will more than 100% of the total project cost be incentivized.

Incentives

Non-End-Use Incentives

Scope of Work	Concierge Service*	Technical Services
Program Application	✓	
Building Assessment		✓
Project Scoping		✓
Project Deliverables	✓	
Project Planning	✓	
Competitive Bid Process	✓	
Capital Funding Stack Guidance and Analysis	✓	
Communication and Relationship Management	✓	
Construction Oversight	✓	
Cost Management	✓	
Project Close Out	✓	

Gold shaded cells indicate services paid for by the Program

✓ White checkmarks indicate services that the Participant may or may not choose to pursue.

* *Concierge service costs are capped based on project ownership, location and size.*

Floodproofing design assistance may be available for eligible Resilience Enhancements

Example TAP Budget

TECHNICAL ASSISTANCE BUDGET TEMPLATE Affordable Multifamily Program Upstate (AMP Up)



Project Name: 123 Main Street Date: 4/16/2026 Revision #: 0

Participating Contractor: Miller Contracting

1. Complete the grey shaded cells in this Budget Template. Provide total costs broken down according to task as identified in the Technical Assistance Plan.
2. Include titles and hourly rates for all team members. For Concierge Contractors, titles and rates presented in the approved budget table must align with the consultant's Task Work Order (TWO) Rate Schedule.
3. Concierge Service incentives will be paid to Concierge Contractors in accordance with the existing TWO. For Participating Contractors in the Multifamily Contractor Network, please indicate

LABOR										
Task Number	Task Description	Payment Incentive Stage*	Principal	Sr Engineer	Engineer	Jr Engineer	Project Manager	Admin	Total Hours	Total Labor:
			\$ 205.00	\$ 185.00	\$ 150.00	\$ 135.00	\$ 160.00	\$ 85.00		
1	Document Collection	Stage 1					2.0	6.0	8.0	\$ 830.00
2	Building Assessment	Stage 1		2.0	8.0				10.0	\$ 1,570.00
2	Project Scoping (draft EAST)	Stage 1		4.0	4.0				8.0	\$ 1,340.00
2.1	Project Scoping - Appliance Package	Stage 1				1.0			1.0	\$ 135.00
2.2	Project Scoping - Prescriptive Package	Stage 1				6.0			6.0	\$ 810.00
2.3	Project Scoping - Weatherization Package	Stage 1			6.0				6.0	\$ 900.00
2.4	Project Scoping - Electrification Package	Stage 1							-	\$ -
2.5	Project Scoping - Deep Retroft Package	Stage 1							-	\$ -
3	Floodproofing Design	Stage 1							-	\$ -
4.1	Concierge - Program Application	Stage 1					2.0	4.0	6.0	\$ 660.00
4.2	Concierge - Project Deliverables	Stage 1					10.0	5.0	15.0	\$ 2,025.00
4.3	Concierge - Project Planning	Stage 1		2.0	6.0		2.0		10.0	\$ 1,590.00
4.4	Concierge - Construction Oversight	Stage 3				12.0	6.0		18.0	\$ 2,580.00
4.5	Concierge - Project Close Out	Stage 4			2.0		8.0	4.0	14.0	\$ 1,920.00
4.6	Concierge - Competitive Bid Process	Stage 2					14.0		14.0	\$ 2,240.00
4.7	Concierge - Capital Funding Stack/Analysis	Stage 1	1.0		2.0			8.0	11.0	\$ 1,185.00
4.8	Concierge - Communication/Relationship Mgmt	Stage 4					6.0		6.0	\$ 960.00
4.9	Concierge - Cost Management	na							-	\$ -
			\$205.00	\$1,480.00	\$4,200.00	\$2,565.00	\$8,000.00	\$2,295.00	133.0	\$ 18,745.00

ANCILLARY EXPENSES	
Item	Total Cost
Travel	845

Total Budget	\$19,590.00
Total Technical Assistance Expenses	\$5,585.00
Total Floodproofing Design Expenses	\$0.00
Total Concierge Expenses	\$13,160.00
Total Ancillary Expenses	\$845.00

TAP Budget to be approved after the Scoping Call

Example TAP Budget

TECHNICAL ASSISTANCE BUDGET TEMPLATE Affordable Multifamily Program Upstate (AMP Up)

Project Name: 123 Main Street Date: 4/16/2026 Revision #: 0

Participating Contractor: Miller Contracting

1. Complete the grey shaded cells in this Budget Template. Provide total costs broken down according to task as identified in the Technical Assistance Plan.
2. Include titles and hourly rates for all team members. For Concierge Contractors, titles and rates presented in the approved budget table must align with the consultant's Task Work Order (TWO) Rate Schedule.
3. Concierge Service incentives will be paid to Concierge Contractors in accordance with the existing TWO. For Participating Contractors in the Multifamily Contractor Network, please indicate

LABOR											
Task Number	Task Description	Payment Incentive Stage*	Principal	Sr Engineer	Engineer	Jr Engineer	Project Manager	Admin	Total Hours	Total Labor:	
			\$ 205.00	\$ 185.00	\$ 150.00	\$ 135.00	\$ 160.00	\$ 85.00			
1	Document Collection	Stage 1					2.0	6.0		\$ 830.00	
2	Building Assessment								10.0	\$ 1,570.00	
2	Project Scoping (draft EIR/ST)	4.1	Concierge - Program Application						Stage 1	8.0	\$ 1,340.00
2.1	Project Scoping - Compliance Pack	4.2	Concierge - Project Deliverables						Stage 1	1.0	\$ 135.00
2.2	Project Scoping - Prescriptive Pa	4.3	Concierge - Project Planning						Stage 1	6.0	\$ 810.00
2.3	Project Scoping - Weatherization	4.3	Concierge - Project Planning						Stage 1	6.0	\$ 900.00
2.4	Project Scoping - Electrification P	4.4	Concierge - Construction Oversight						Stage 3	-	\$ -
2.5	Project Scoping - Deep Retrofit P	4.4	Concierge - Construction Oversight						Stage 3	-	\$ -
3	Floodproofing Design	4.5	Concierge - Project Close Out						Stage 4	-	\$ -
4.1	Concierge - Program Application	4.5	Concierge - Project Close Out						Stage 4	6.0	\$ 660.00
4.2	Concierge - Project Deliverables	4.6	Concierge - Competitive Bid Process						Stage 2	15.0	\$ 2,025.00
4.3	Concierge - Project Planning	4.3	Concierge - Project Planning						Stage 1	10.0	\$ 1,590.00
4.4	Concierge - Construction Oversight	4.4	Concierge - Capital Funding Stack/Analysis						Stage 1	18.0	\$ 2,580.00
4.5	Concierge - Project Close Out	4.5	Concierge - Project Close Out						Stage 4	14.0	\$ 1,920.00
4.6	Concierge - Competitive Bid Pro	4.6	Concierge - Competitive Bid Process						Stage 2	14.0	\$ 2,240.00
4.7	Concierge - Capital Funding Stac	4.7	Concierge - Capital Funding Stack/Analysis						Stage 1	18.0	\$ 2,580.00
4.8	Concierge - Communication/Relationship Mgmt	4.8	Concierge - Communication/Relationship Mgmt						Stage 4	14.0	\$ 1,920.00
4.9	Concierge - Cost Management	4.9	Concierge - Cost Management						na	11.0	\$ 1,185.00
4.9	Concierge - Cost Management	na								6.0	\$ 960.00
			\$205.00	\$1,480.00	\$4,200.00	\$2,565.00	\$8,000.00	\$2,295.00	133.0	\$ 18,745.00	

ANCILLARY EXPENSES	
Item	Total Cost
Travel	845

Total Budget	\$19,590.00
Total Technical Assistance Expenses	\$5,585.00
Total Floodproofing Design Expenses	\$0.00
Total Concierge Expenses	\$13,160.00
Total Ancillary Expenses	\$845.00

For Contractor Network, fill in Payment Incentive Stage

TAP Budget to be approved after the Scoping Call

Concierge Services are available to all projects. Services provided by Concierge Contractors **AND** contractors from the Multifamily Contractor Network.

Project Type	NYSERDA Coverage of Approved Concierge Services Costs
PHA owned or managed or located in a DAC	100%, up to \$35,000
Non-PHA owned or managed and not located in a DAC	100%, up to \$20,000 75%, from \$20,001-\$35,000

Technical Assistance incentives are available to all projects.

Technical Assistance	Stage 1	Stage 2
Building Assessment and Project Scope	75% of approved TAP Budget	25% of approved TAP Budget
Floodproofing Design Assistance	100% of approved TAP Budget	n/a

- Projects with a FlexTech energy audit completed within the last 3 years of an AMP Up application submittal and apply to AMP Up on or before November 30, 2026, are eligible to receive the additional out of pocket 25% of the approved costs associated with the FlexTech energy study if the project moves forward with implementation of weatherization, electrification, or deep retrofit measure packages in AMP Up.
- After November 30, 2026, buildings that apply to AMP Up within six months of completing a FlexTech energy audit are eligible to receive the 25% kicker.
- These additional incentives will be paid out at Stage 2 of AMP Up.
- Assessments completed under the Small Affordable Multifamily Energy Study (SAMES), or any other FlexTech energy audit that received a 100% cost share from NYSERDA, are not eligible for this 25% kicker.

Incentive Category		Incentive	Incentive Schedule			
			Stage 1 (Scope Development)	Stage 2 (Construction)	Stage 3 - Optional (Partial)	Stage 4 (Construction)
End-Use Incentives	Appliances	\$400 per unit			100% of incentive	
	Prescriptive	Up to \$1,750 per unit	Low-Rise Pathway: 25% of incentive or Large Building Pathway: 25% of incentive	Low-Rise Pathway: 25% of incentive or Large Building Pathway: n/a	Low-Rise Pathway: 25% of incentive or Large Building Pathway: 40% of incentive	Low-Rise Pathway: 25% of incentive or Large Building Pathway: 35% of incentive
	Weatherization	Up to \$2,500 per unit				
	Electrification	Up to \$5,750 per unit				
	Deep Retrofit	Up to \$6,750 per unit				

In addition to the Incentive Category Caps, each project is also capped at the cost of work being covered.

- Projects with 5 - 20 units = 85% Cost Cap
- Projects with 21+ units = 70% Cost Cap

Incentive Category		Incentive Schedule		
		Stage 2 (Construction)	Stage 3 - Optional (Partial)	Stage 4 (Construction)
End-Use Incentives	Appliances		100% of incentive	
	Prescriptive			
	Weatherization	Low-Rise Pathway: 25% of incentive or Large Building Pathway: n/a	Low-Rise Pathway: 25% of incentive or Large Building Pathway: 40% of incentive	Low-Rise Pathway: 25% of incentive or Large Building Pathway: 35% of incentive
	Electrification			
	Deep Retrofit			

In addition to the Incentive Category Caps, each project is also capped at the cost of work being covered.

- Projects with 5 - 20 units = 85% Cost Cap
- Projects with 21+ units = 70% Cost Cap

Incentive Schedule

Incentive Category		Incentive	Incentive Category		Incentive	
End-Use Incentives	Appliances	\$400 per unit	End-Use Incentives	Appliances	\$400 per unit	Stage 4 (Construction)
	Prescriptive	Up to \$1,750 per unit		Prescriptive	Up to \$1,750 per unit	Low-Rise Pathway: 25% of incentive or Large Building Pathway: 35% of incentive
	Weatherization	Up to \$2,500 per unit		Weatherization	Up to \$2,500 per unit	
	Electrification	Up to \$5,750 per unit		Electrification	Up to \$5,750 per unit	
	Deep Retrofit	Up to \$6,750 per unit		Deep Retrofit	Up to \$6,750 per unit	

In addition to the Incentive Category Caps, each project is also capped at the cost of work being covered.

- Projects with 5 - 20 units = 85% Cost Cap
- Projects with 21+ units = 70% Cost Cap

Incentive Category		Incentive Cap	Incentive Schedule (% incentive paid by stage)			
			Stage 1: Scope Development	Stage 2: Construction Start	Stage 3: Partial Construction (optional)	Stage 4: Construction Complete
			Stage 1 (Scope Development)	Stage 2 (Construction Start)	Stage 3 - Optional (Partial Construction)	Stage 4 (Construction Complete)
End-Use Incentives	Appliances	\$400 per unit			100% of incentive	
	Prescriptive	Up to \$1,750 per unit	Low-Rise Pathway: 25% of incentive or Large Building Pathway: 25% of incentive	Low-Rise Pathway: 25% of incentive or Large Building Pathway: n/a	Low-Rise Pathway: 25% of incentive or Large Building Pathway: 40% of incentive	Low-Rise Pathway: 25% of incentive or Large Building Pathway: 35% of incentive
	Weatherization	Up to \$2,500 per unit				
	Electrification	Up to \$5,750 per unit				
	Deep Retrofit	Up to \$6,750 per unit				

In addition to the Incentive Category Caps, each project is also capped at the cost of work being covered.

- Projects with 5 - 20 units = 85% Cost Cap
- Projects with 21+ units = 70% Cost Cap

Incentive Category		Incentive	Incentive Schedule			
			Stage 1 (Scope Development)	Stage 2 (Construction)	Stage 3 - Optional (Partial)	Stage 4 (Construction)
End-Use Incentives	Appliances	\$400 per unit			100% of incentive	
	Prescriptive	Up to \$1,750 per unit	Low-Rise Pathway: 25% of incentive or Large Building Pathway: 25% of incentive	Low-Rise Pathway: 25% of incentive or Large Building Pathway: n/a	Low-Rise Pathway: 25% of incentive or Large Building Pathway: 40% of incentive	Low-Rise Pathway: 25% of incentive or Large Building Pathway: 35% of incentive
	Weatherization	Up to \$2,500 per unit				
	Electrification	Up to \$5,750 per unit				
	Deep Retrofit	Up to \$6,750 per unit				

In addition to the Incentive Category Caps, each project is also capped at the cost of work being covered.

- Projects with 5 - 20 units = 85% Cost Cap
- Projects with 21+ units = 70% Cost Cap

Incentive Schedule

Incentive Category	Incentive Category Cap	Incentive Schedule (% incentive paid by stage)				
		Stage 1: Scope Development	Stage 2: Construction Start	Stage 3: Partial Construction (optional)	Stage 4: Construction Complete	
TA	Technical Assistance	Up to 100% of approved scope of work	75%	25%		
	Concierge Services	Up to \$35,000	As defined by TWO or approved TAP			
	Floodproofing Design Assistance	See Resilience Enhancement Addendum				
End-Use Incentives	Appliances	\$400 per unit			100%	
	Prescriptive	Up to \$1,750 per unit	Low-Rise Pathway: 25% or Large Building Pathway: 25%	Low-Rise Pathway: 25% or Large Building Pathway: 0%	Low-Rise Pathway: 25% or Large Building Pathway: 40%	Low-Rise Pathway: 25% or Large Building Pathway: 35%
	Weatherization	Up to \$2,500 per unit				
	Electrification	Up to \$5,750 per unit				
	Deep Retrofit	Up to \$6,750 per unit				
Resilience Enhancements	See Resilience Enhancement Addendum					

In addition to the Incentive Category Caps, each project is also capped at the cost of work being covered.

- Projects with 5 - 20 units = 85% Cost Cap
- Projects with 21+ units = 70% Cost Cap

Incentive Example

20-unit project applies in 2026. The Available Incentives are capped for the current funding cycle (2026-2030).

Incentives are also capped at 85% of the total cost of work because this is a low-rise pathway projects.

Incentive Category	Incentive/Unit	# of Units:	Maximum Available Incentives
Appliance Rebate	\$400	20	Up to \$8,000
Prescriptive	\$1,750	20	Up to \$35,000
Weatherization	\$2,500	20	Up to \$50,000
Electrification	\$5,750	20	Up to \$115,000
Deep Retrofit	\$6,750	20	Up to \$135,000

Incentive Example

Total Funding Available (2026-2030)

Incentive Category	Incentive/Unit	# of Units:	Available Incentives
Appliance Rebate	\$ 400	20	\$ 8,000
Prescriptive	\$ 1,750	20	\$ 35,000
Weatherization	\$ 2,500	20	\$ 50,000
Electrification	\$ 5,750	20	\$ 115,000
Deep Retrofit	\$ 6,750	20	\$ 135,000

2026 Scope

Incentive Category	Available Incentives
Appliance Rebate	\$ 8,000
Prescriptive	\$ 35,000
Weatherization	\$ 50,000
Electrification	\$ 115,000
Deep Retrofit	\$ 135,000

20-unit project applies in 2026. The Available Incentives are capped for the current funding cycle (2026-2030).

Incentives are also capped at 85% of the total cost of work (excluding refrigerators.)

Incentive Example

Total Funding Available (2026-2030)

Incentive Category	Incentive/Unit	# of Units:	Available Incentives
Appliance Rebate	\$ 400	20	\$ 8,000
Prescriptive	\$ 1,750	20	\$ 35,000
Weatherization	\$ 2,500	20	\$ 50,000
Electrification	\$ 5,750	20	\$ 115,000
Deep Retrofit	\$ 6,750	20	\$ 135,000

2026 Scope

Incentive Category	Available Incentives	2026 SOW Cost
Appliance Rebate	\$ 8,000	\$ 20,000
Prescriptive	\$ 35,000	\$ 15,000
Weatherization	\$ 50,000	\$ 40,000
Electrification	\$ 115,000	-
Deep Retrofit	\$ 135,000	-

20-unit project applies in 2026. The Available Incentives are capped for the current funding cycle (2026-2030).

Incentives are also capped at 85% of the total cost of work (excluding refrigerators.)

In 2026, project installs

- \$20,000 in refrigerators,
- \$15,000 of prescriptive measures and
- \$40,000 in weatherization measures.

Incentive Example

Total Funding Available (2026-2030)

Incentive Category	Incentive/Unit	# of Units:	Available Incentives
Appliance Rebate	\$ 400	20	\$ 8,000
Prescriptive	\$ 1,750	20	\$ 35,000
Weatherization	\$ 2,500	20	\$ 50,000
Electrification	\$ 5,750	20	\$ 115,000
Deep Retrofit	\$ 6,750	20	\$ 135,000

20-unit project applies in 2026. The Available Incentives are capped for the current funding cycle (2026-2030).

Incentives are also capped at 85% of the total cost of work (excluding refrigerators.)

2026 Scope

Incentive Category	Available Incentives	2026 SOW Cost	85% of SOW Cost
Appliance Rebate	\$ 8,000	\$ 20,000	\$ 17,000
Prescriptive	\$ 35,000	\$ 15,000	\$ 12,750
Weatherization	\$ 50,000	\$ 40,000	\$ 34,000
Electrification	\$ 115,000	-	-
Deep Retrofit	\$ 135,000	-	-

In 2026, project installs

- \$20,000 in refrigerators,
- \$15,000 of prescriptive measures and
- \$40,000 in weatherization measures.

* Incentive capped at the LESSER of “85% of SOW cost” or “available incentives” for each category.

Incentive Example

Total Funding Available (2026-2030)

Incentive Category	Incentive/Unit	# of Units:	Available Incentives
Appliance Rebate	\$ 400	20	\$ 8,000
Prescriptive	\$ 1,750	20	\$ 35,000
Weatherization	\$ 2,500	20	\$ 50,000
Electrification	\$ 5,750	20	\$ 115,000
Deep Retrofit	\$ 6,750	20	\$ 135,000

2026 Scope

Incentive Category	Available Incentives	2026 SOW Cost	85% of SOW Cost
Appliance Rebate	\$ 8,000	\$ 20,000	\$ 17,000
Prescriptive	\$ 35,000	\$ 15,000	\$ 12,750
Weatherization	\$ 50,000	\$ 40,000	\$ 34,000
Electrification	\$ 115,000	-	-
Deep Retrofit	\$ 135,000	-	-

* Incentive capped at the LESSER of “85% of SOW cost” or “available incentives” for each category.

20-unit project applies in 2026. The Available Incentives are capped for the current funding cycle (2026-2030).

Incentives are also capped at 85% of the total cost of work (excluding refrigerators.)

In 2026, project installs

- \$20,000 in refrigerators,
- \$15,000 of prescriptive measures and
- \$40,000 in weatherization measures.

Incentive Example

Total Funding Available (2026-2030)

Incentive Category	Incentive/Unit	# of Units:	Available Incentives
Appliance Rebate	\$ 400	20	\$ 8,000
Prescriptive	\$ 1,750	20	\$ 35,000
Weatherization	\$ 2,500	20	\$ 50,000
Electrification	\$ 5,750	20	\$ 115,000
Deep Retrofit	\$ 6,750	20	\$ 135,000

20-unit project applies in 2026. The Available Incentives are capped for the current funding cycle (2026-2030).

Incentives are also capped at 85% of the total cost of work (excluding refrigerators.)

2026 Scope

Incentive Category	Available Incentives	2026 SOW Cost	85% of SOW Cost	Incentives Paid*
Appliance Rebate	\$ 8,000	\$ 20,000	\$ 17,000	\$ 8,000
Prescriptive	\$ 35,000	\$ 15,000	\$ 12,750	\$ 12,750
Weatherization	\$ 50,000	\$ 40,000	\$ 34,000	\$ 34,000
Electrification	\$ 115,000	-	-	-
Deep Retrofit	\$ 135,000	-	-	-

In 2026, project installs

- \$20,000 in refrigerators,
- \$15,000 of prescriptive measures and
- \$40,000 in weatherization measures.

* Incentive capped at the LESSER of “85% of SOW cost” or “available incentives” for each category.

Incentive Example

Total Funding Available (2026-2030)

Incentive Category	Incentive/Unit	# of Units:	Available Incentives
Appliance Rebate	\$ 400	20	\$ 8,000
Prescriptive	\$ 1,750	20	\$ 35,000
Weatherization	\$ 2,500	20	\$ 50,000
Electrification	\$ 5,750	20	\$ 115,000
Deep Retrofit	\$ 6,750	20	\$ 135,000

20-unit project applies in 2026. The Available Incentives are capped for the current funding cycle (2026-2030).

Incentives are also capped at 85% of the total cost of work (excluding refrigerators.)

2026 Scope

Incentive Category	Available Incentives	2026 SOW Cost	85% of SOW Cost	Incentives Paid*	Remaining Available Incentives
Appliance Rebate	\$ 8,000	\$ 20,000	\$ 17,000	\$ 8,000	\$ -
Prescriptive	\$ 35,000	\$ 15,000	\$ 12,750	\$ 12,750	\$ 22,250
Weatherization	\$ 50,000	\$ 40,000	\$ 34,000	\$ 34,000	\$ 16,000
Electrification	\$ 115,000	-	-	-	\$ 115,000
Deep Retrofit	\$ 135,000	-	-	-	\$ 135,000

In 2026, project installs

- \$20,000 in refrigerators,
- \$15,000 of prescriptive measures and
- \$40,000 in weatherization measures.

* Incentive capped at the LESSER of “85% of SOW cost” or “available incentives” for each category.

Incentive Example

Total Funding Available (2026-2030)

Incentive Category	Incentive/Unit	# of Units:	Available Incentives
Appliance Rebate	\$ 400	20	\$ 8,000
Prescriptive	\$ 1,750	20	\$ 35,000
Weatherization	\$ 2,500	20	\$ 50,000
Electrification	\$ 5,750	20	\$ 115,000
Deep Retrofit	\$ 6,750	20	\$ 135,000

20-unit project applies in 2026. The Available Incentives are capped for the current funding cycle (2026-2030).

Incentives are also capped at 85% of the total cost of work (excluding refrigerators.)

2026 Scope

Incentive Category	Available Incentives	2026 SOW Cost	85% of SOW Cost	Incentives Paid*	Remaining Available Incentives
Appliance Rebate	\$ 8,000	\$ 20,000	\$ 17,000	\$ 8,000	\$ -
Prescriptive	\$ 35,000	\$ 15,000	\$ 12,750	\$ 12,750	\$ 22,250
Weatherization	\$ 50,000	\$ 40,000	\$ 34,000	\$ 34,000	\$ 16,000
Electrification	\$ 115,000	-	-	-	\$ 115,000
Deep Retrofit	\$ 135,000	-	-	-	\$ 135,000

In 2026, project installs

- \$20,000 in refrigerators,
- \$15,000 of prescriptive measures and
- \$40,000 in weatherization measures.

* Incentive capped at the LESSER of “85% of SOW cost” or “available incentives” for each category.

2028 Scope

Incentive Category	Available Incentives	2028 SOW	85% of SOW Cost	Incentives Paid*	Remaining Available Incentives
Appliance Rebate	-	-	-	-	-
Prescriptive	\$ 22,250	\$ 20,000	\$ 17,000	\$ 17,000	\$ 5,250
Weatherization	\$ 16,000	\$ 20,000	\$ 17,000	\$ 16,000	\$ -
Electrification	\$ 115,000	\$ 185,000	\$ 157,250	\$ 115,000	\$ -
Deep Retrofit	\$ 135,000	\$ 92,000	\$ 78,200	\$ 78,200	\$ 56,800

In 2028, project installs

- \$20,000 more in new prescriptive measures,
- \$20,000 more in new weatherization measures,
- \$185,000 on electrification measures, and
- \$92,000 in deep retrofit measures.

* Incentive capped at the LESSER of “85% of SOW cost” or “available incentives” for each category.

Summary of Costs and Incentives

For a \$392,000 project, the Participant paid \$111,150 out of pocket.

They effectively paid ~\$0.28 for each dollar of work.

Incentive Category	Available Incentives	Total Cost	Total Incentives Paid	Total Cost Out of Pocket
Appliance Rebate	\$ 8,000	\$ 20,000	\$ 8,000	\$ 12,000
Prescriptive	\$ 35,000	\$ 35,000	\$ 29,750	\$ 5,250
Weatherization	\$ 50,000	\$ 60,000	\$ 50,000	\$ 10,000
Electrification	\$ 115,000	\$ 185,000	\$ 115,000	\$ 70,000
Deep Retrofit	\$ 135,000	\$ 92,000	\$ 78,200	\$ 13,800
Totals	\$ 343,000	\$ 392,000	\$ 280,950	\$ 111,050

Resilience Enhancements

Resilience Measures

Heat pump floodproofing

Heat pump water heating floodproofing

HRV floodproofing

Electric panel elevation

Electrification for Heat Vulnerable Populations

Hurricane resistant windows

Resilience Design Assistance

Floodproofing design assistance

Floodproofing Resilience Enhancements may be required for Flood Exposed projects installing:

- Any Heating and Cooling Electrification measure
- Any Hot Water Electrification measure
- Advanced Ventilation with Heat or Energy Recovery

Definitions

- **Flood Exposed:** Located in current or future 100-yr or 500-yr floodplain, or documented past flooding at site
- **Heat Vulnerable Populations:** Must have at least one heat-vulnerable person in at least 50% of units. Heat-vulnerable, for the purposes of this program, is defined as; above the age of 60, below the age of 6, and/or who is permanently disabled.

Measure Classification	Eligibility Requirement
Heat Pump Floodproofing	<ul style="list-style-type: none"> • Must install Heating/Cooling Heat Pump measure • Must be Flood Exposed
Heat Pump Water Heater Floodproofing	<ul style="list-style-type: none"> • Must install Heat Pump Water Heater measure • Must be Flood Exposed
Heat Recovery Ventilation Floodproofing	<ul style="list-style-type: none"> • Must install Advanced Ventilation with Heat Recovery measure • Must be Flood Exposed
Electrical Panel Elevation	<ul style="list-style-type: none"> • Must install at least one Electrification measure • Must be Flood Exposed
Electrification for Heat Vulnerable Populations	<ul style="list-style-type: none"> • Must install Heating/Cooling Heat Pump measure • Must meet Heat Vulnerable Population criteria • Must be transitioning from delivered fuels or electric resistance heating
Hurricane Resistant Windows	<ul style="list-style-type: none"> • Must install Windows measure

Resilience Enhancement Incentives

Resilience Incentive Category		Incentive Category Cap*	Incentive Schedule (% incentive paid by Stage)			
			Stage 1 (Scope Development)	Stage 2 (Construction start)	Stage 3 - Optional (Partial Construction)	Stage 4 (Construction Complete)
TA	Floodproofing Design Assistance	Up to 100% of total cost of developing Floodproofing Schematic Design(s)	100% of incentive			
End-Use Incentives	Heat Pump Floodproofing	Up to 100% of total cost of floodproofing	Low-Rise Pathway: 25% of incentive or Large Building Pathway: 25% of incentive	Low-Rise Pathway: 25% of incentive or Large Building Pathway: n/a	Low-Rise Pathway: 25% of incentive or Large Building Pathway: 40% of incentive	Low-Rise Pathway: 25% of incentive or Large Building Pathway: 35% of incentive
	Heat Pump Water Heater Floodproofing					
	Advanced Ventilation Floodproofing					
	Electrical Panel Elevation	Low Rise Pathway: up to 85% of total enhancement cost Large Building Pathway: up to 70% of enhancement cost				
	Eletrification for Heat Vulnerable Populations	Up to 30% of Heating and Cooling Heat Pump Costs				
Hurricane Resistant Windows	50% of cost premium				100% of incentive	

Total Resilience Enhancement end-use incentives + Floodproofing Design Assistance incentives may not exceed \$500,000 per project.

Incentives for Resilience Enhancements will not apply towards the total project incentive cap.

**Subject to NYSEERDA review and approval and as detailed in the Incentive Offer Letter.*

Resilience Enhancement Incentives

Resilience Incentive Category	Incentive Cap	Incentive Schedule (% incentive paid by Stage)				
		Stage 1 (Design)	Stage 2 (Construction Start)	Stage 3 (Optional Construction)	Stage 4 (Construction Complete)	
TA Floodproofing Design Assistance	Up to \$50,000					Up to 100% of total cost of developing Floodproofing Schematic Design(s)
End-Use Incentives	Heat Pump Floodproofing					Up to 100% of total cost of floodproofing
	Heat Pump Water Heater Floodproofing	Up to 70% of enhancement cost				
	Advanced Ventilation Floodproofing					
	Electrical Panel Elevation Floodproofing					
	Eletrification for Heat Vulnerable Populations	Up to 30% of Heating and Cooling Heat Pump Costs				100% of incentive
	Hurricane Resistant Windows	50% of cost premium				

*Total Resilience Enhancement end-use incentives + Floodproofing Design Assistance incentives may not exceed \$500,000 per project. Incentives for Resilience Enhancements will not apply towards the total project incentive cap. *Subject to NYSEERDA review and approval and as detailed in the Incentive Offer Letter.*

Resilience Enhancement Incentives

Resilience Incentive Category		Incentive Category Cap*	Incentive Schedule (% incentive paid by Stage)			
			Stage 1 (Scope Development)	Stage 2 (Construction start)	Stage 3 - Optional (Partial Construction)	Stage 4 (Construction Complete)
TA	Floodproofing Design Assistance	Up to 100% of total cost of developing Floodproofing Schematic Design(s)	100% of incentive			
End-Use Incentives	Heat Pump Floodproofing	Up to 100% of total cost of floodproofing	Low-Rise Pathway:	Medium-Rise Pathway:	Low-Rise Pathway:	Low-Rise Pathway: 25% of incentive or Large Building Pathway: 35% of incentive
	Heat Pump Water Heater Floodproofing					
	Advanced Ventilation Floodproofing					
	Electrical Panel Elevation					
	Electrification for Heat Vulnerable Populations	Up to Cooling Heat Pump Costs				100% of incentive
	Hurricane Resistant Windows	50% of cost premium				

*Total Resilience Enhancement end-use incentives + Floodproofing Design Assistance incentives may not exceed \$500,000 per project. Incentives for Resilience Enhancements will not apply towards the total project incentive cap. *Subject to NYSERDA review and approval and as detailed in the Incentive Offer Letter.*

Resilience Enhancement Incentives

Resilience Incentive Category		Incentive Category Cap*	Incentive Schedule (% incentive paid by Stage)			
			Stage 1 (Scope Development)	Stage 2 (Construction start)	Stage 3 - Optional (Partial Construction)	Stage 4 (Construction Complete)
TA	Floodproofing Design Assistance	Up to 100% of total cost of developing Floodproofing Schematic Design(s)	100% of incentive			
End-Use Incentives	Heat Pump Floodproofing	Up to 100% of total cost of floodproofing	Low-Rise Pathway: 25% of incentive or Large Building Pathway: 25% of incentive	Low-Rise Pathway: 25% of incentive or Large Building Pathway: n/a	Low-Rise Pathway: 25% of incentive or Large Building Pathway: 40% of incentive	Low-Rise Pathway: 25% of incentive or Large Building Pathway: 35% of incentive
	Heat Pump Water Heater Floodproofing					
	Advanced Ventilation Floodproofing					
	Electrical Panel Elevation	Low Rise Pathway: up to 85% of total enhancement cost Large Building Pathway: up to 70% of enhancement cost				
	Electrification for Heat Vulnerable Populations	Up to 30% of Heating and Cooling Heat Pump Costs	Up to 30% of Heating and Cooling Heat Pump Costs			100% of incentive
	Hurricane Resistant Windows	50% of cost premium				

*Total Resilience Enhancement end-use incentives + Floodproofing Design Assistance incentives may not exceed \$500,000 per project. Incentives for Resilience Enhancements will not apply towards the total project incentive cap.
Subject to NYSERDA review and approval and as detailed in the Incentive Offer Letter.

Resilience Enhancement Incentives

Resilience Incentive Category		Incentive Category Cap*	Incentive Schedule (% incentive paid by Stage)			
			Stage 1 (Scope Development)	Stage 2 (Construction start)	Stage 3 - Optional (Partial Construction)	Stage 4 (Construction Complete)
TA	Floodproofing Design Assistance	Up to 100% of total cost of developing Floodproofing Schematic Design(s)	100% of incentive			
End-Use Incentives	Heat Pump Floodproofing	Up to 100% of total cost of floodproofing	Low-Rise Pathway: 25% of incentive or Large Building Pathway: 25% of incentive	Low-Rise Pathway: 25% of incentive or Large Building Pathway: n/a	Low-Rise Pathway: 25% of incentive or Large Building Pathway: 40% of incentive	Low-Rise Pathway: 25% of incentive or Large Building Pathway: 35% of incentive
	Heat Pump Water Heater Floodproofing					
	Advanced Ventilation Floodproofing					
	Electrical Panel Elevation	Low Rise Pathway: up to 85% of total enhancement cost Large Building Pathway: up to 70% of enhancement cost				
	Electrification for Heat Vulnerable Populations	Up to 50% of cost premium				100% of incentive
	Hurricane Resistant Windows	50%	Hurricane Resistant Windows	50% of cost premium		

*Total Resilience Enhancement end-use incentives + Floodproofing Design Assistance incentives may not exceed \$500,000 per project. Incentives for Resilience Enhancements will not apply towards the total project incentive cap.
Subject to NYSEERDA review and approval and as detailed in the Incentive Offer Letter.

Questions?

(3 min break)

Project Journey by Stage

Program Milestones



Application phase



Stage 1:
Scope Development
\$

Deadline: 120 calendar days from application approval date

Contractor revisions are due within 30 calendar days



Stage 2:
Construction Start
\$

Deadline: Within 5 business days of the start of construction



Construction phase



Stage 3 (optional):
Partial Construction Completion
\$

If refrigerators are part of the SOW, they must be installed by Stage 3.



Stage 4:
Construction Completion
\$

Deadline: 2 years from application approval date

Contractor revisions are due within 30 calendar days

One EAST must be completed for each project. The EAST can accommodate multiple buildings.

Measure savings calculations must adhere to the technical standards of the Participating Contractor professional certification for energy analysis (e.g., AEE CEM, AEE CEA, or BPI MFBA).

Energy audits must be conducted or supervised by a Participating Contractor and must be conducted in accordance with the certification standards that the auditor holds.

Projects installing Electrification and Deep Retrofit measures must have a utility bill analysis completed by the Program using the Energy Use Snapshot Tool. The results of this analysis must be incorporated into the EAST for submission.

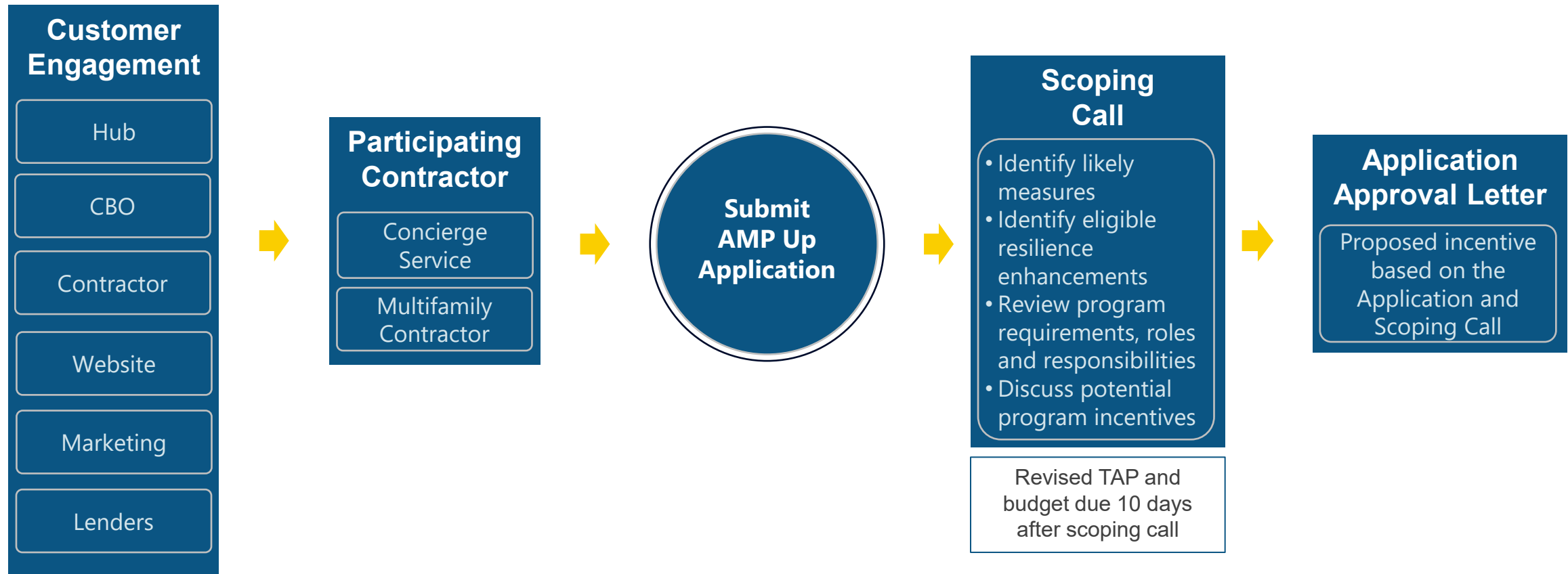
All recommended and installed improvements must comply with the Minimum Performance Standards specified in the AMP Up Eligible Measures List. The QMS Checklist should also be consulted for performance and installation specifications.

The final scope of work may not increase resident energy cost as based on the EAST.

Electrification projects must pass the electrification sensitivity analysis showing utility bills will not increase for a specified period of time.

Application Phase

Application Process Flow



Current versions of these documents can be found on the **AMP Up** program page.

Application Submittal

Project information

Signed Participation Agreement

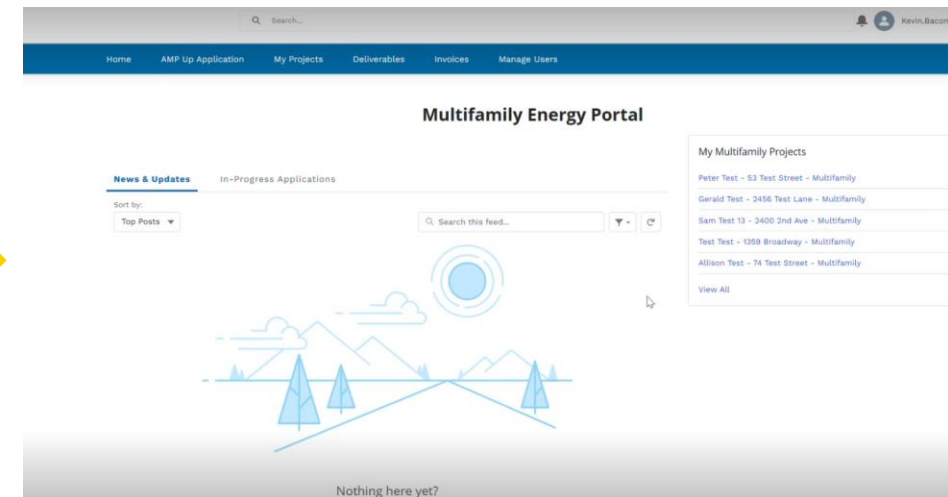
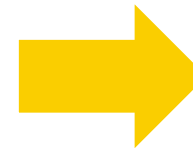
W-9 (for Owners to receive payment)

Income Verification Documentation

Data Release Authorization Forms

Tech Assistance Plan & Budget

Other energy information, if applicable



- Navigate The Multifamily Energy Portal
- Manage Users
- Submit An AMP Up Application
- Manage Deliverables
- Re-Submit Rejected Deliverables
- View and Print Invoices

Next up:
SALESFORCE DEMO

Detailed written instructions for navigating and using the Multifamily Energy Portal are available in the Public Knowledge Base and are linked below:

- Multifamily Energy Portal Home Page:

- <https://nyserda.atlassian.net/wiki/spaces/PUBLIC/pages/1195147366>

- Submit an AMP Up Application:

- <https://nyserda.atlassian.net/wiki/spaces/PUBLIC/pages/1183875098>

- Manage Deliverables:

- <https://nyserda.atlassian.net/wiki/spaces/PUBLIC/pages/1194229840>

- View and Print Invoices:

- <https://nyserda.atlassian.net/wiki/spaces/PUBLIC/pages/1198948453>

- Manage Users:

- <https://nyserda.atlassian.net/wiki/spaces/PUBLIC/pages/1198751882>

Questions?

(3 min break)

Stage 1: Scope Development

The level of assessment required is dependent on the Measure Category as defined below.

Incentive Category	Energy Audit Required?	Modeling Required?
Appliance	Recommended, not required	No
Prescriptive	Recommended, not required	No
Weatherization	Recommended, not required	No
Electrification	Targeted ASHRAE Level 2	Yes
Deep Retrofit	Targeted ASHRAE Level 2	Yes

Projects with energy audits conducted within the past 3 years may be able to waive energy assessment requirement.

If modeling is not required,

- EAST must be used to calculate all energy savings
- All measures must be included in the Measure Calculations tab of EAST

If modeling is required:

- Modeling must be performed by a Concierge Contractor or a Multifamily Contractor approved to provide Energy Assessor services
- Low-rise Pathway projects may choose to use Clarity Compass tool as an alternative to modeling
 - These projects can use Clarity Compass to simulate measures in all Incentive Categories other than Prescriptive Measures, which must be included in the EAST Measures Calculation tab.
- For projects not eligible or chose to not use the Clarity Compass tool:
 - All measures must be modeled in an approved modeling software.
 - Modeling must follow methodologies outlined in the Multifamily Simulation Guidelines.

Eligible Measures - Tiered Requirements

Incentive Category	Measure Classification	Eligibility Requirement
Appliance	Refrigerator (with Freezer)	Tier 1
	Primary HVAC combustion tune-up (Boiler/Furnace)	Tier 1
Prescriptive	Steam Trap – Low Pressure	Tier 1
	Exterior Lighting	Tier 1
	Interior Lighting	Tier 1
	Efficient-flow showerheads	Tier 2
	Faucet aerators	Tier 2
	Thermostatic Shower Restriction Valve	Tier 2
	Room (RAC) Cover and Gap Sealer	Tier 2
	Heating/Cooling, Steam Pipe Insulation	Tier 3
	Advanced Thermostat	Tier 3
	Install TRVs or radiator valves	Tier 3

Incentive Category	Measure Classification	Eligibility Requirement
Weatherization	Insulation (Attic Access)	Tier 1
	Duct Sealing and Insulation	Tier 3
	Airsealing	Tier 3
	Insulation (basement)	Tier 3
	Insulation (roof)	Tier 3
	Insulation (Wall)	Tier 3
	Window Replacement	Tier 3

Incentive Category	Measure Classification	Eligibility Requirement
Electrification	ASHP – HPWH	Tier 3
	GSHP – HPWH	Tier 3
	WSHP - HPWH	Tier 3
	ASHP	Tier 3
	GSHP	Tier 3
	PTHP	Tier 3
	Deep Retrofit	Envelope – overclad (Insulation - Opaque Shell)
Advanced Ventilation with Heat or Energy Recovery		Tier 3

Tier 1 measures must meet eligibility criteria from Program Manual and be installed with at least one measure from the Weatherization, Electrification, or Deep Retrofit Incentive Category. (“Comprehensive work scope”)

Tier 2 measures must meet eligibility criteria from Program Manual and be installed with at least one other measure from any Incentive Category. (“Package of Measures”)

Tier 3 measures must meet eligibility criteria from the Program Manual. (“Standalone measure”)

Measure Category - Minimum Requirements

Incentive Category	Category Minimum Requirement
Appliance	Measures must apply to at least 90% of the building.
Prescriptive	<p>Must select at least 2 measures from the Prescriptive Category.</p> <p>Measures must apply to at least 90% of the building.</p>
Weatherization	Measures must apply to at least 90% of the applicable building space.
Electrification	<p>At minimum, one Weatherization Measure must be installed with the electrification measure. If project can demonstrate all weatherization measures meet program requirements, this requirement may be waived.</p> <p>Measures must apply to at least 90% of the applicable building space.</p> <p>If project is exposed to flood hazard, applicable Resilience Enhancement of electrification measures may be required.</p>
Deep Retrofit Measures	<p>At minimum, one additional measure must be installed from any other Incentive Category. Measures must apply to at least 90% of the applicable building space.</p> <p>If project is exposed to flood hazard, applicable Resilience Enhancement of deep retrofit measures may be required.</p>

Incentive Category	Measure Classification	Eligibility Requisite
Prescriptive	Heating/Cooling, Steam Pipe Insulation	Tier 3
Prescriptive	Advanced Thermostat	Tier 3
Prescriptive	Install TRVs or radiator valves	Tier 3

Even though these three *Prescriptive Measures* are Tier 3 (a standalone measure) the Category Minimum Requirements table indicates a minimum of 2 measures must be installed.

Current versions of these documents can be found on the AMP Up program page.

Stage 1 Submittal	Applicable for...
Energy Assessment & Scoping Tool (EAST)	All projects
Photo Template of existing conditions	All projects
Modeling Output	Electrification or Deep Retrofit projects (not in Clarity Compass)
Participant / Contractor contract	Projects served by Multifamily Contractor Network
Floodproofing Schematic Design	Resilience Enhancement projects pursuing floodproofing or panel elevation
Signed Heat Vulnerable Attestation Form	Eligible Resilience Enhancement projects pursuing Electrification measures
Additional design documentation, as needed	Resilience Enhancement projects
Tenant-paid delivered fuel bills for recent heating season	Electrification projects in buildings with tenant-paid delivered fuels

All submitted files must be submitted using NYSERDA’s filename convention. Details can be found in the Program Manual, Appendix A.

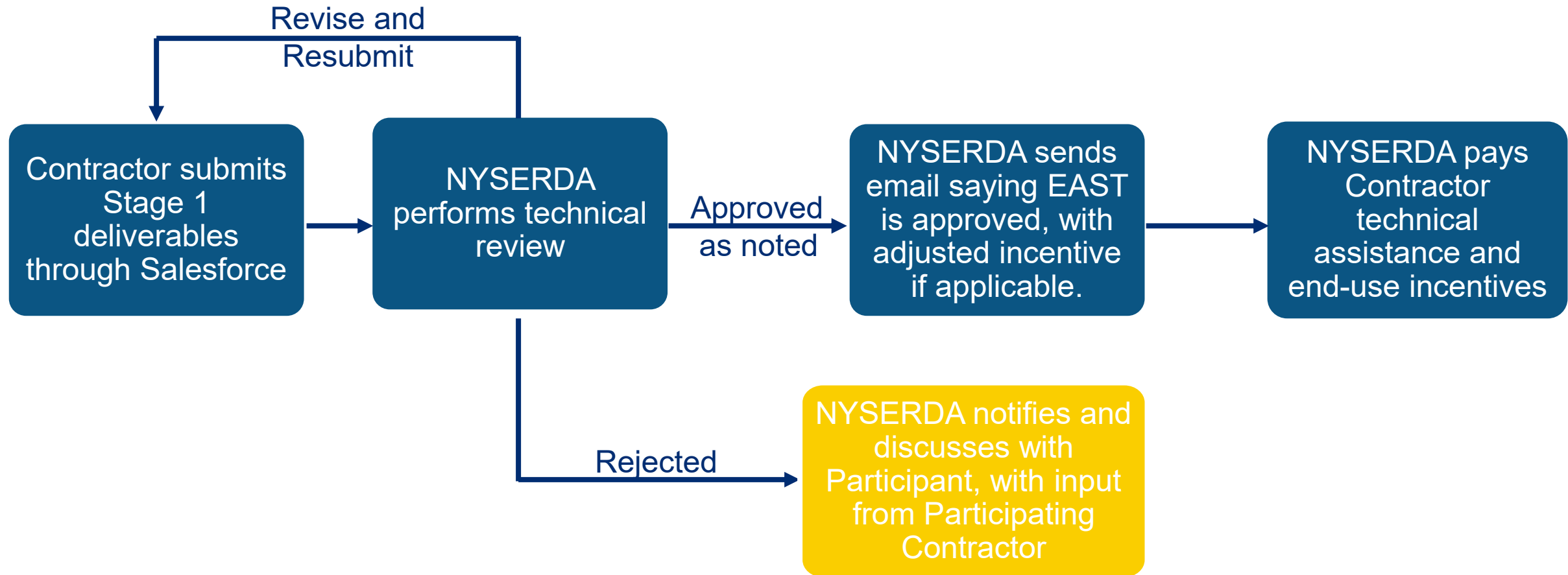
Document	Filename Convention	Example
EAST	Project Name - EAST_rev0.xls	NY Apts - EAST_rev0.xls
Model Output (if applicable)	Project Name – model_rev0	NY Apts – model_rev0
Participating Contractor Contract	Project Name - Participating Contractor Contract.pdf	NY Apts - Participating Contractor Contract.pdf
Photo Template (refer to program website)	Project Name – Photos_rev0.pdf	NY Apts – Photos_rev0.pdf
Common Area Data Release Authorization Form (if not previously submitted)	Project Name – Owner DRAF.pdf	NY Apts – Owner DRAF.pdf
Resident Data Release Authorization Form (if not previously submitted)	Project Name – Account Holder Name and APT# DRAF.pdf	NY Apts – Smith 101 DRAF.pdf
Fuel Delivery Receipts (if not previously submitted)	Project Name -Document Name (as appropriate) Fuel Type.pdf	NY Apts – Jones Propane.pdf
Schematic Floodproofing Design Drawings (if needed)	Project Name – Schematic Floodproofing Drawings.pdf	NY Apts – Schematic Floodproofing Drawings.pdf
Heat Vulnerable Attestation (if needed)	Project Name – Heat Vulnerable Attestation.pdf	NY Apts – Heat Vulnerable Attestation.pdf

***Submittals that do not adhere to the filename convention will be returned to the Participating Contractor without a technical review.**

The Program Manual details other Stage 1 requirements that each project must follow, including:

- Documentation and scope development
- Photo requirements
- Utility cost analysis
- Measure Cost Estimation and Estimated Useful Life
- Minimum Performance Standards

Stage 1 Approval Process



Stage 2: Construction Start

Who is eligible for Stage 2 end-use incentive?

- Low-Rise Pathway projects

Who is eligible for Stage 2 technical assistance incentive?

- All projects

Incentive available when

- All funding sources are in place
- Final costs have been established
- Construction is contracted to begin

Stage 2 Submittal

Executed contract(s) from installers

Construction schedule

Funding documentation

Certificate of insurance

Final commitment letter from lender and pro-forma that describes funding sources and uses

OR

Bank account statement documenting capital on hand to cover project costs

OR

Final grant source documentation

Stage 2 Approval Process



Construction Phase

Contractor Responsibilities during Construction Phase

Participating Contractors are responsible for the following:

- Verifying work is installed per scope described in the approved EAST and per the program’s **Minimum Performance Standards**
- Gathering and submitting appropriate measure documentation, such as cut sheets for each product installed as part of the work scope
- Completing and submitting the inspection workbook

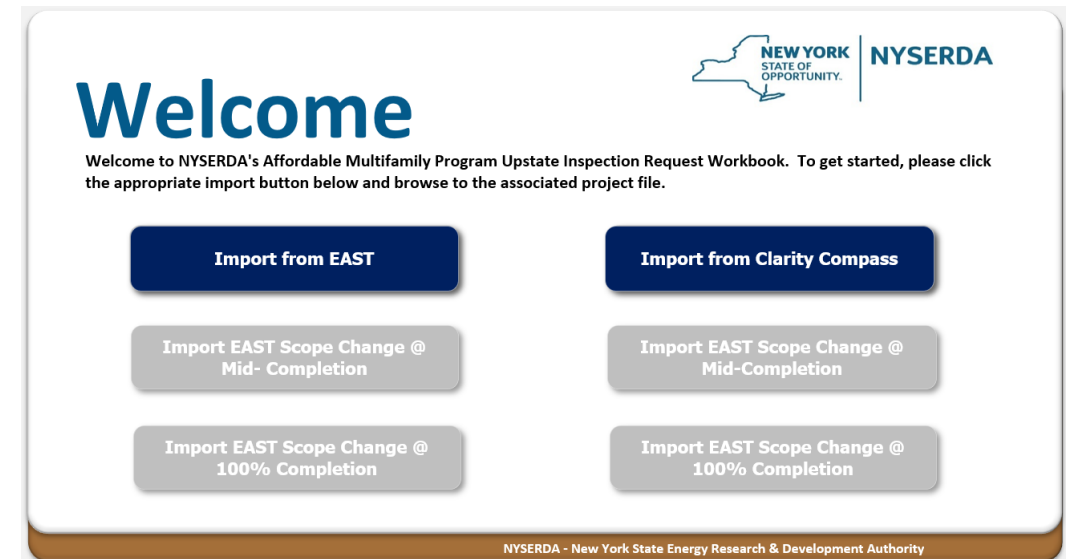
Incentive Category	Measure Category	Measure Classification	Task	Description	Minimum Performance Standards
Prescriptive	Hot Water	Efficient-flow showerheads	Efficient-flow showerheads have been installed in the dwelling units.	Verify that efficient-flow showerheads have been installed	<ul style="list-style-type: none"> - Shall be listed in the WaterSense Directory at the time of purchase - 1.8 GPM @ 80 psi max
Prescriptive	Hot Water	Faucet aerators	Low-flow faucet aerators are installed for kitchen and bathroom faucets.	Verify that low-flow faucet aerators are installed for kitchen and bathroom faucets.	<ul style="list-style-type: none"> - Kitchen Faucets - Single Flow: 1.5 GPM @ 60 psi max - Dual flow: 1.8 GPM max @ 60 psi - Bathroom lavatory faucets and all other fixtures in dwell units - Shall be listed in the WaterSense Directory at time of purchase - 1.0 GPM @ 60 psi max
Prescriptive	Hot Water	Thermostatic Shower Restriction Valve	Thermostatic shower restriction valves have been installed.	Verify that thermostatic shower restriction valves have been installed in at least 90% of the showers.	<ul style="list-style-type: none"> - A minimum of 90% of all showers must be retrofit.
Prescriptive	HVAC	Room AC Cover and Gap Sealer	Insulated covers and seals have been installed on permanently installed window or through-wall air conditioners.	Verify that compliant insulated covers and seals are installed on the inside of permanently installed window or through-wall air conditioners.	<ul style="list-style-type: none"> - Install rigid, insulated (minimum R-5) cover on inside of permanently installed window or through-the-wall air conditioning unit. - Add a cover or seal the gap surrounding the unit. - Building resident or maintenance staff must be instructed proper annual removal and reinstallation of the cover. - Either rigid foam or cellular glass pipe insulation must be used.
Prescriptive	HVAC	Heating/Cooling, Steam Pipe Insulation	Compliant insulation has been installed on heating/ cooling and steam piping.	Verify that compliant insulation has been installed on heating/ cooling and steam piping.	<ul style="list-style-type: none"> - Minimum Piping Insulation Thickness as required by ECCC NYS. - Measure applies to copper, steel, CPVC, or PEX piping with nominal diameter between 0.50-4". HDPE piping is not eligible for this measure. - Available for boilers/furnaces that have not received a turn up in 5 years or more.

Participating Contractors must refer to the Standards and Quality Assurance Checklist for measure specific requirements.

This workbook is used to aggregate final installation details of the project.

For each incentivized measure, Contractor must complete measure specific tab and provide information requested, such as:

- Equipment make and model
- Nameplate efficiencies
- Quantities
- Location of equipment
- Insulation thickness and R-value



Contractor should reference workbook prior to going onsite to avoid missing information.

Information in workbook must be verified by either:

- Contractor's on-site inspection of installed measures OR
- Statement of Substantial Completion from installation contractor

As part of verification, Contractor must verify compliance with all Minimum Performance Standards and requirements listed in the QMS Checklist for all incentivized measures.

Contractor must ensure all required system testing is performed by qualified and trained personnel. If completed by someone else, they must submit a Statement of Substantial Completion.

Participating Contractors are required to submit photo documentation of installed equipment using the Photo Template.

- All photos must be clear with readable labels or nameplates.
- Measurement photos must show the item being measured by the proper measurement tool (measuring tape, depth gauge, etc.)
- Appliance and equipment photos must include readable photos of the product label(s) and photo(s) showing the quantity installed.
- Insulation photos must clearly show insulation type, thickness, R-value, and proper installation including an overview photo showing insulation location (interior, exterior, etc.)

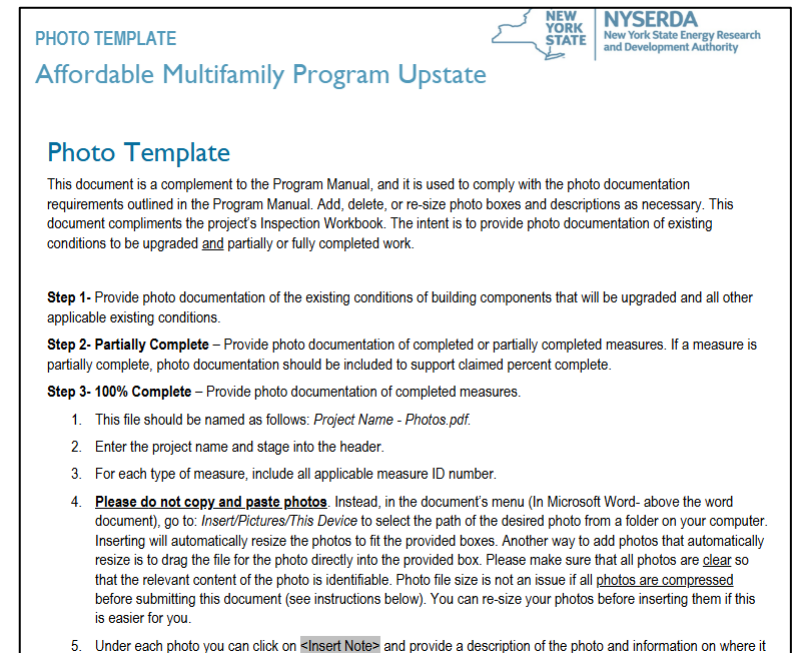


PHOTO TEMPLATE
Affordable Multifamily Program Upstate

NEW YORK STATE
NYSERDA
New York State Energy Research and Development Authority

Photo Template

This document is a complement to the Program Manual, and it is used to comply with the photo documentation requirements outlined in the Program Manual. Add, delete, or re-size photo boxes and descriptions as necessary. This document compliments the project's Inspection Workbook. The intent is to provide photo documentation of existing conditions to be upgraded and partially or fully completed work.

Step 1- Provide photo documentation of the existing conditions of building components that will be upgraded and all other applicable existing conditions.

Step 2- Partially Complete – Provide photo documentation of completed or partially completed measures. If a measure is partially complete, photo documentation should be included to support claimed percent complete.

Step 3- 100% Complete – Provide photo documentation of completed measures.

1. This file should be named as follows: *Project Name - Photos.pdf*.
2. Enter the project name and stage into the header.
3. For each type of measure, include all applicable measure ID number.
4. **Please do not copy and paste photos.** Instead, in the document's menu (In Microsoft Word- above the word document), go to: *Insert/Pictures/This Device* to select the path of the desired photo from a folder on your computer. Inserting will automatically resize the photos to fit the provided boxes. Another way to add photos that automatically resize is to drag the file for the photo directly into the provided box. Please make sure that all photos are clear so that the relevant content of the photo is identifiable. Photo file size is not an issue if all photos are compressed before submitting this document (see instructions below). You can re-size your photos before inserting them if this is easier for you.
5. Under each photo you can click on Insert Note and provide a description of the photo and information on where it

Changes to scope of work that affect the overall project savings and/or the measures identified in the approved EAST, must be communicated to NYSERDA.

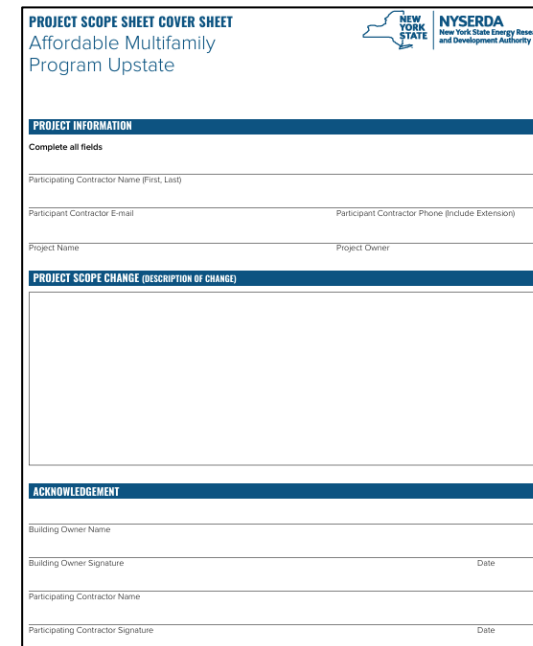
- Changes can happen any time after the approval of the EAST.
- Revised scope must meet all rules and requirements.

Scope Change Submittal

Scope Change cover sheet

Revised EAST

Model output, if applicable



PROJECT SCOPE SHEET COVER SHEET
Affordable Multifamily Program Upstate

PROJECT INFORMATION
Complete all fields

Participating Contractor Name (First, Last) _____
Participant Contractor E-mail _____ Participant Contractor Phone (include Extension) _____
Project Name _____ Project Owner _____

PROJECT SCOPE CHANGE (DESCRIPTION OF CHANGE)

ACKNOWLEDGEMENT

Building Owner Name _____
Building Owner Signature _____ Date _____
Participating Contractor Name _____
Participating Contractor Signature _____ Date _____

**Stages 3: Partial
Construction Completion
(optional)**

Stage 3 is an **optional** partial construction complete stage, unless Refrigerators are included in the scope of work. If refrigerators are included, they must be installed and all final documentation must be submitted at Stage 3.

Stage 3 incentive is available when:

- 30% of proposed energy savings are installed and functional or capable of functioning

OR

- Equipment is on site that represents at least 50% of proposed energy savings

Current versions of these documents can be found on the [AMP Up program page](#).

Stage 3 Submittal

Inspection Workbook

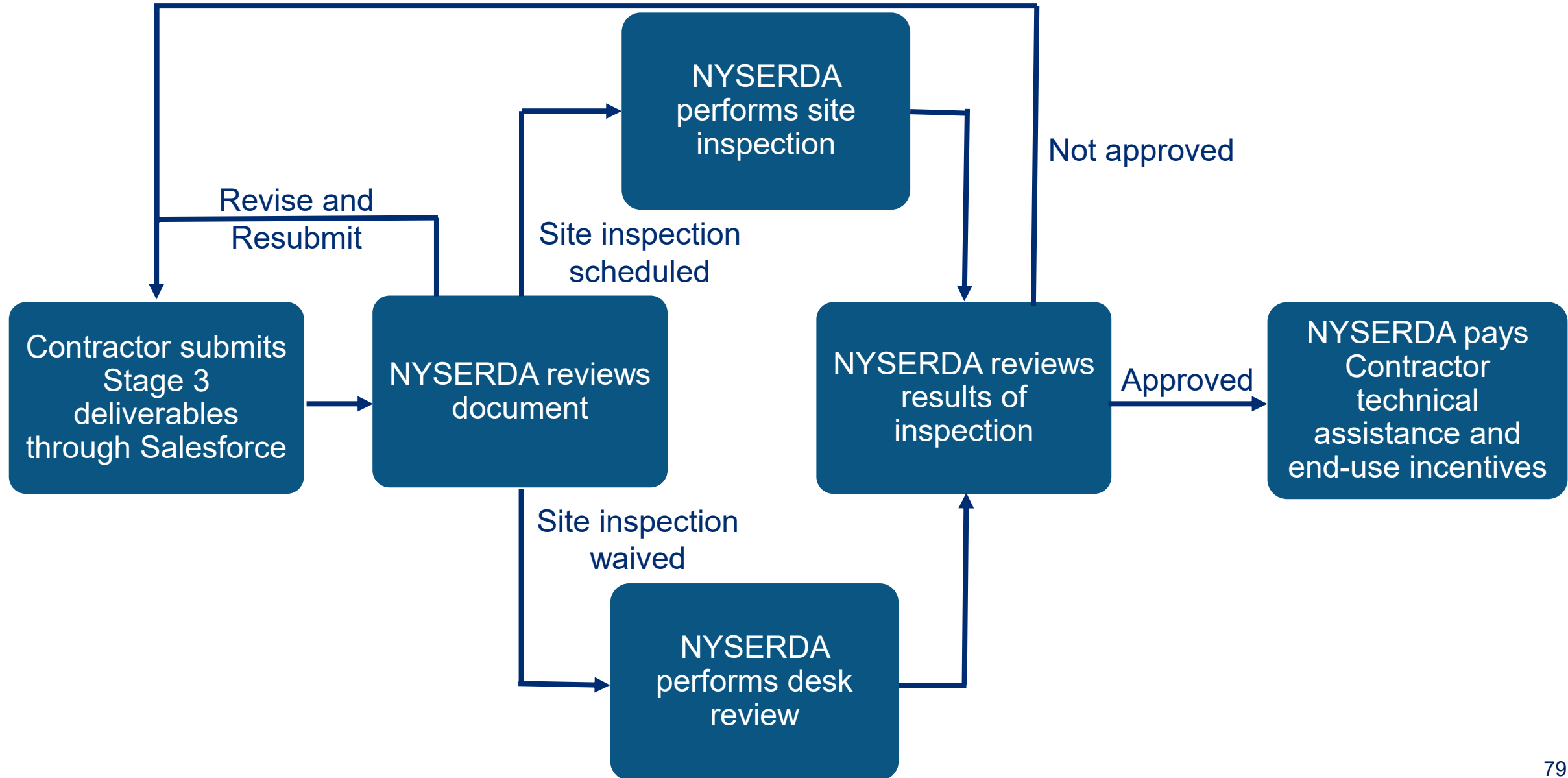
Photo template of installed measures

Final invoices

Additional measure documentation, as required

Resilience Enhancement Stage 3 deliverables, if applicable

Stage 3 Approval Process



Stages 4: Construction Completion

Stage 4 incentive is available when:

- All energy improvements, including Resilience Enhancements, if applicable, are installed and functional or capable of functioning

Stage 4 Submittal

Updated EAST with final costs

Inspection Workbook

Photo template of installed measures

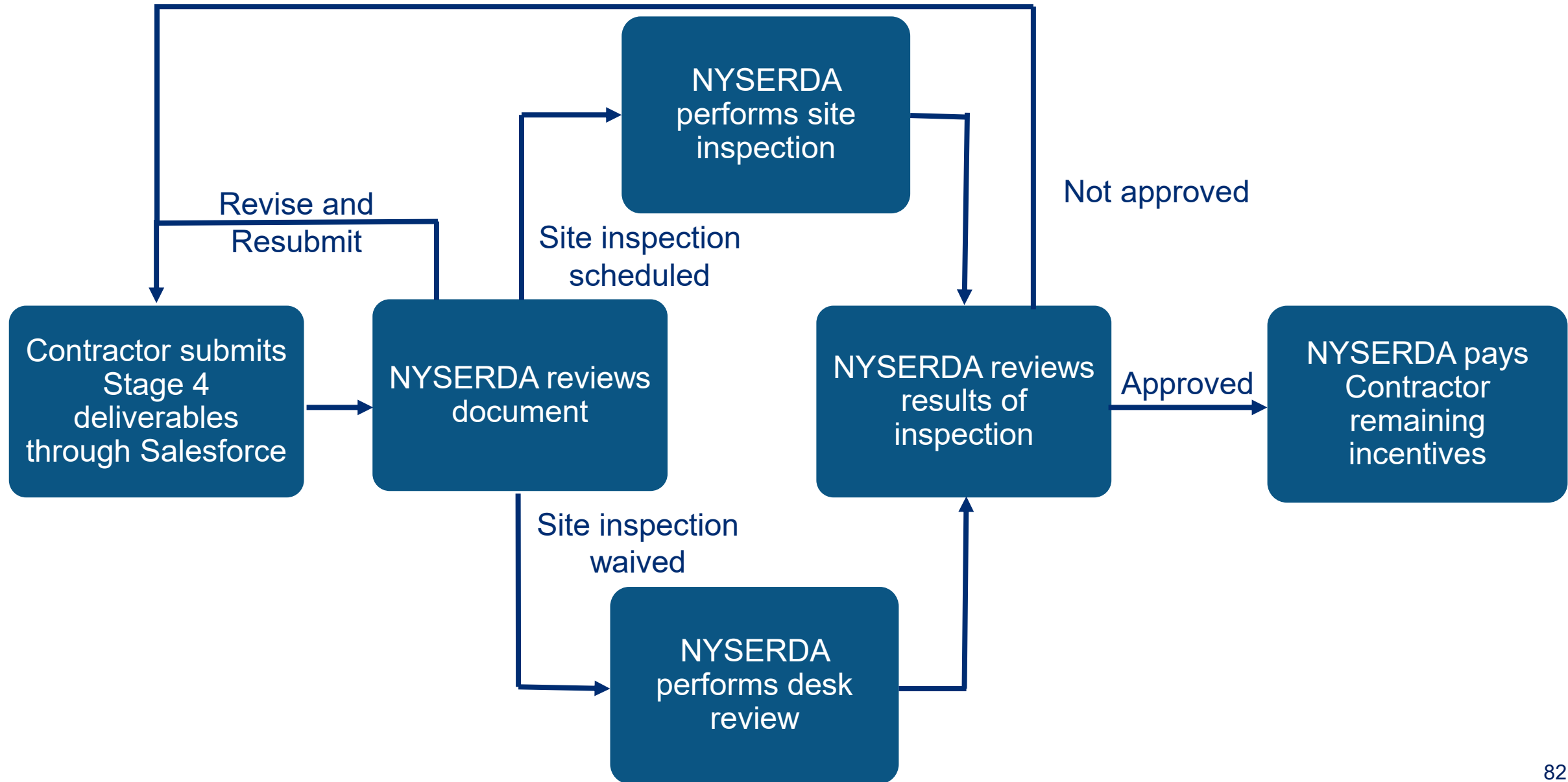
Final invoices

Common Area Data Release Authorization Forms (DRAFTs)

Additional measure documentation, as required

Resilience Enhancement Stage 4 deliverables, if applicable

Stage 4 Approval Process



Project Complete!!!



Questions?



UP NEXT:

May 5, 2026

Tools Training for Contractors

Thank you!

Pamela Miller
Sr. Project Manager
MultifamilyPrograms@nyserda.ny.gov