

Community Engagement Plan

for

Warner Hill Solar Facility

WEB Warner Hill Solar, LLC

SWEB Development
a W.E.B company
sweb.energy



W.E.B

Table of Contents

Community Engagement Plan.....	1
Table of Contents	i
Acronyms and Abbreviations	ii
1 Introduction	1
2.1 Company Profile	2
2.2 Project Summary	2
2.3 AHJ and Taxing School Districts.....	3
3 Community Overview.....	4
3.1 Community Profile	4
3.2 Addressing Community Concerns	5
3.3 Environmental Justice and Disadvantaged Communities.....	8
4 Outreach Strategy	8
4.1 Outreach Goals.....	8
4.2 Targeted Stakeholder Groups	8
4.3 Outreach Tools	10
4.4 Outreach Tactics.....	10
4.5 Public Meetings	10
4.6 Project Representatives	12
5. Project Benefits	12
6. References.....	12
Appendix A: Stakeholder List	16
Appendix B: Record of Engagement	21

Community Engagement Plan

Acronyms and Abbreviations

CLCPA	Climate Leadership and Community Protection Act
DC	Direct current
MW	Megawatt
MWh	Megawatt hour
NYISO	New York Independent System Operator
NYSAM	New York State Department of Agriculture and Markets
NYSDEC	New York State Department of Environmental Conservation
NYSERDA	New York State Energy Research and Development Authority
OPRHP	New York State Office of Parks, Recreation and Historic Preservation
ORES	Office of Renewable Energy Siting
PILOT	Payment-in-Lieu-of-Taxes
PV	Photovoltaic
USACE	U.S. Army Corps of Engineers
USFWS	U.S. Fish and Wildlife Service

Community Engagement Plan

1 Introduction

SWEB Development USA, LLC (“SWEB”) on behalf of WEB Warner Hill Solar, LLC is proposing to develop the Warner Hill Solar Facility (the “Project”, “Facility”), an approximately 17.60 megawatt (MW) alternating current (AC) photovoltaic (PV) solar energy generation facility located in the Town of Schoharie in Schoharie County, New York. SWEB seeks to advance this utility-scale project through the Office of Renewable Energy Siting (ORES) and adhere to 94-C regulations. This Project will significantly contribute to the State of New York’s clean energy goals. The Climate Leadership and Community Protection Act (CLCPA) sets ambitious targets for renewable energy and a just transition toward renewable energy that SWEB is proud to contribute toward.

SWEB shares the State’s commitment to community outreach and transparency and strives to undertake responsible project development that considers, engages, and benefits local host communities. The Community Engagement Plan (the “Plan”) serves as a guide and tool through all phases of the development process, from planning and site design through construction and operation, and extending to site decommissioning.

This Plan is a living document that provides a framework for SWEB’s community engagement process. It identifies key stakeholders, discusses outreach goals and objectives, and describes tools and tactics for outreach. SWEB’s approach to community outreach is flexible and adaptive; outreach tools and tactics may be revised throughout the engagement process as SWEB comes to better understand stakeholder interests

“SWEB is committed to public engagement and will draw upon lessons learned from previous development in rural communities to ensure local voices, interests, and concerns shape site design and mitigation so that the end product benefits not just State goals, but the host communities that make those goals achievable.”

*—Jason Parisé, SWEB
Senior Development Manager*

Community Engagement Plan

2 Applicant and Project Description

2.1 Company Profile

SWEB Development USA, LLC (“SWEB”) is a team of renewable energy professionals who are passionate about community, the environment, and shared social values. SWEB Development USA, LLC is the United States subsidiary of WEB Windenergie AG (WEB) an Austrian, community-owned energy transition company.

W.E.B operates a total of 284 wind energy, 50 photovoltaic, and 2 hydroelectric power plants throughout Europe and North America. Their established nominal output of 735 MW and the produced energy of 1,468,585 MWh enable WEB to provide over 1 million people with clean energy electricity. SWEB Development USA, LLC and its Canadian affiliate SWEB Development Inc have over 3,000 MW in development throughout North America.

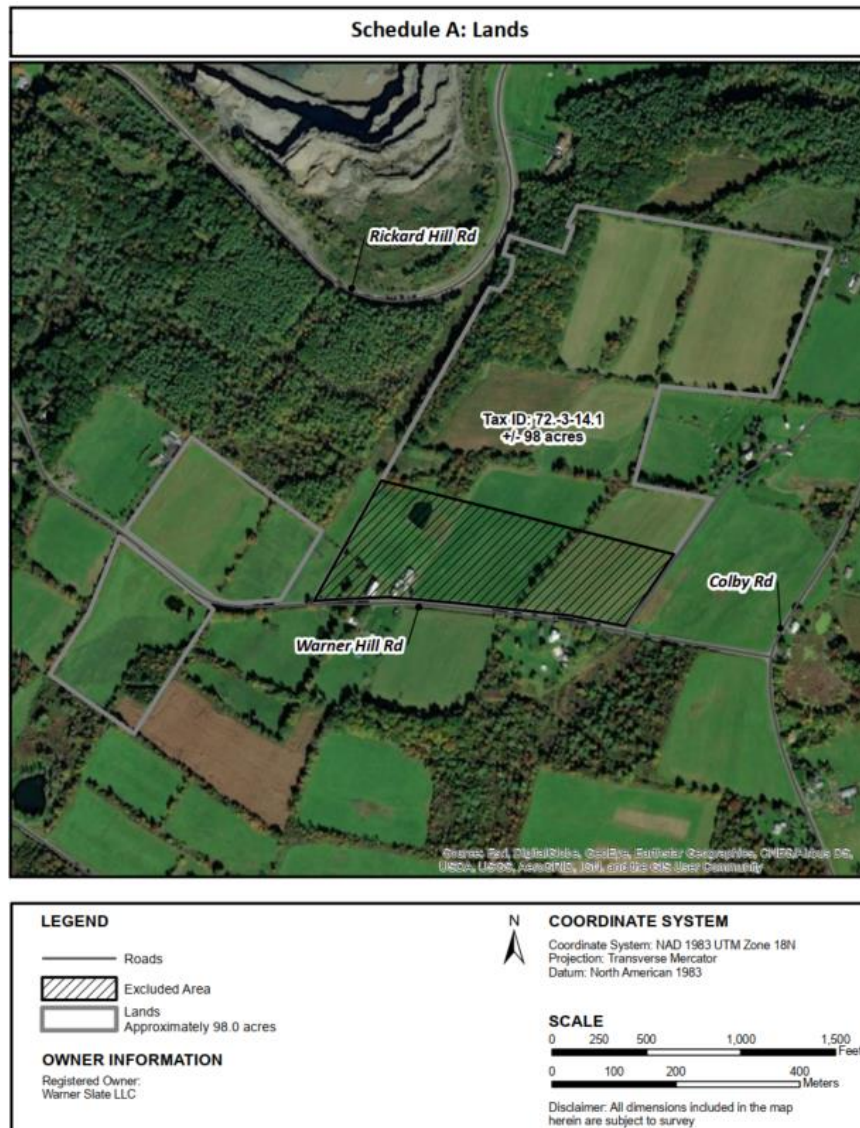
2.2 Project Summary

The Warner Hill Solar Facility will be an approximately 20.90 MW DC / 17.60 MW AC PV solar energy generation facility in the town of Schoharie in Schoharie County, New York. The Project facility area, depicted in Schedule A below, reflects the parcels upon which there may be project components, including roads, collector lines, and interconnection equipment. Project facilities are anticipated to include ground-mounted solar panel arrays, pad-mounted inverter transformers, an interconnection area, perimeter security fences, and access roads. The anticipated lifespan of the project is roughly 30 years.

The Facility area consists of private land primarily rural in nature and encompasses approximately 96 acres. Predominant land cover types include 47% of land cover is hay/pasture, 25% is cultivated crops, 10% is mixed forest and 4% is deciduous forest.

At the expected capacity of 17.60MW AC, the Project would generate an estimated 31,198 MWh of energy per year. This would be enough electricity to meet the average annual consumption of 2,567 New York State households, based on an average annual household electricity consumption (US EPA Equivalencies Calculator, January 2024).

Community Engagement Plan



2.3 AHJ and Taxing School Districts

Authorities having jurisdiction (AHJ) over the Project, as well as the taxing School Districts are listed below. Appendix A provides the full stakeholder list.

County of Schoharie
 William A. Federice, Chairman, Board of Supervisors
 284 Main Street
 Schoharie, NY 12157
 518-295-8347

Town of Schoharie
 Benjamin J. Oevering, Supervisor
 300 Main Street

Community Engagement Plan

Schoharie, NY 12157
 518-495-6587
 Schoharie.supervisor@co.schoharie.ny.us

Schoharie Central School District (Code #572)
 Dave Blanchard, Superintendent of Schools
 136 Academy Drive
 Schoharie, NY 12157
 (518) 295-6679
 DBlanchard@schoharieschools.org

3 Community Overview

3.1 Community Profile

Land use in the Facility area is generally similar to that of Schoharie County. The Village of Schoharie (Village), the county seat of Schoharie County, is in the southeast part of the Town of Schoharie (Town) and is West of Albany, about 0.7 miles from the Facility area. Land uses in the area are dominated by agriculture and rural residences. Route 30 follows Schoharie Creek which bisects the Town. The population was 951 as of 2022.

Agricultural land uses account for about 41% of the land acreage in the Town. Land for field crops and productive vacant land is the predominant agricultural use. About 29% of the Town is in residential uses with one family year-round residences predominant. Vacant land accounts for about 28% of the Town and most are rural vacant lots of ten acres or less. Less than 1.0% of the Town (21.41 acres) is commercial and 11.52 acres are classified as community services (religious facilities and cemeteries). 1.2%, or 229.2 acres are industrial (mining activities). The remaining 228 acres, or 1.3% are used for public services. (Town & Village of Schoharie) The predominant land use in the Village is residential (406 acres or 45%). Agricultural land uses, primarily for field crops and nursery operations, make up 327 acres or 37% of the Village. 7.0% of the Village land is vacant, 3.5% is in community services, 2.3% is industrial, and 3.0% is public service uses. Although agriculture is an important industry in the Town, less than 5.0% of those employed work in agriculture. (Town & Village of Schoharie)

According to the U.S. Census Bureau data from the 2022 American Community Survey five-year estimates, 5.9% of Schoharie County residents aged five or older speak a language other than English at home. With a 2022 population estimate of 28,726 persons aged five and older in the county, approximately 1,687 speak a language other than English at home (US Census, 2022). See Table 1. Based on these findings SWEB intends to disseminate Project-related materials solely in English.

Community Engagement Plan

Table 1: Most Prevalent Languages Spoken in Project Area Zip Codes

Zip Code	Total Population 5 years and over	Language	Number of Speakers
Schoharie County	28,726	English	27,039
		Spanish	600
		Other Indo-European languages	886
		Asian and Pacific Island languages	145
		Other	56

Source: 2022 American Community Survey S1601 | LANGUAGE SPOKEN AT HOME

3.2 Addressing Community Concerns

SWEB will make a concerted effort to communicate with stakeholders throughout the Project lifecycle and will strive to identify issues early in development so that stakeholders' concerns are addressed through a project design that is favorable to impacted communities. See SWEB’s communication strategy below. SWEB has outlined a list of potential stakeholder concerns and how it plans to address these concerns based on experience from other projects and knowledge of the regional area. See Table 2 for the list of potential concerns.

Communication Strategy

SWEB will host public community engagement sessions, develop outreach materials, and maintain a Project website to inform stakeholders of Project details and to receive and consider comments.

SWEB began conducting outreach activities in November 2019 with the landowner and in 2022 with the larger community and will continue throughout Project development. Appendix B provides a record of engagement via which SWEB will continue to track outreach and engagement activities. Individuals and groups may request to be added to SWEB’s stakeholder list via the project website or by submitting their contact information at a public meeting or other in-person meeting. SWEB will notify stakeholders of Project activities, including key milestones in the permitting process, public meetings, commencement of construction, and the date of commercial operation. Stakeholders will be notified of key milestones during Project development through postings on the Project website. Public meetings will be advertised on the website in advance and may be published/advertised via local media. SWEB will work with local representatives to help identify the best media outlets for reaching residents, some of which may include newspapers (print and/or digital) and community group newsletters. SWEB also will send email notifications regarding public events to individuals and groups who have signed up as interested stakeholders.

For key stakeholder groups, such as agencies, municipalities, elected officials, and non-profits/special interest groups, SWEB will contact the appropriate representative to introduce the Project and offer to meet with the representative or stakeholder group to discuss Project specifics. SWEB will offer information on the company, Project, and permitting and development process.

Potential Stakeholder Concerns

SWEB has anticipated the potential concerns below and provided responses to ease those concerns. These messages have been tailored and adapted for a general audience and are intended as a starting point for conversations with stakeholders. SWEB encourages continued dialogue around these topics and welcomes stakeholder input on additional topics of interest and/or concern. See Table 2 for potential shareholder concerns and how SWEB has and intends to continue addressing such concerns.

Community Engagement Plan

Table 2. Potential Stakeholder Concerns

Potential Issue/Concern	How it will be addressed	Reference
Role of local permitting authority under ORES and the Accelerated Renewable Energy Growth and Community Benefit Act	<p>SWEB will engage in consultation with local government throughout the Project lifecycle to ensure understanding of local laws and will engage representatives of local government as part of its community engagement strategy to ensure local concerns are considered in the Project siting strategy. SWEB believes projects achieve greatest success when local communities understand and feel Project benefits.</p> <ul style="list-style-type: none"> • Prior to the adoption of uniform permit terms and conditions, ORES is required to conduct public hearings across the state to provide opportunity for local government input. • Applications for projects under ORES will not be deemed complete without proof of consultation with the host community regarding procedural and substantive requirements of applicable laws. 	<p>NYSERDA ORES Fact Sheet: https://www.nyserdera.ny.gov/-/media/Files/Programs/Clean-Energy-Standard/Accelerated-Renewables-Fact-Sheet.pdf</p>
Protection of community resources	<p>SWEB will implement various measures that avoid, minimize, and mitigate effects to community character in the area of the Project, including siting away from population centers and areas of residential development; design measures that avoid, minimize, and mitigate effects to local cultural and historic resources. Phase 1A study has been conducted. Phase 1B study will be conducted in Q4'24.</p>	
Protection of wildlife and habitat	<p>SWEB has conducted initial desktop analysis on potential listed species that could be within the Project Area as well as Wildlife Site Characterization, Breeding Bird Survey, Winter Grassland Raptor Survey and Wetland and Surface Water delineation surveys as part of the permitting process. SWEB will engage in consultation and coordination with NYSDEC and ORES regarding protected species and to identify minimizing disturbance of wildlife. SWEB will locate access roads and panels that completely avoid disturbance of wetlands and streams.</p>	
Need for utility-scale renewable energy	<p>SWEB is advancing this project to help the State meet its renewable energy goals. CLCPA sets ambitious State goals for reductions in greenhouse gas emissions, and investments in technology, as well as job creation and energy worker transitions and the protection of disadvantaged communities. New sources of renewable energy generation are required to meet these goals.</p>	<p>CLCPA: Scoping Plan - New York's Climate Leadership & Community Protection Act (ny.gov)</p>
Visual impact	<p>As part of Project development SWEB conducted a visual impact assessment to determine opportunities to avoid and/or mitigate potential visual impacts. A Visual Report will be completed in Q4 2024. Project design will strive to leverage existing vegetative screening to reduce visual impact and will make use of native pollinator plants around the perimeter for further screening.</p>	

Community Engagement Plan

Table 2. Potential Stakeholder Concerns

Potential Issue/Concern	How it will be addressed	Reference
Noise	<p>Sound from operating solar facilities largely derives from inverters and transformers. SWEB intends to design the project to place those components with greatest potential for noise impacts at a central location within the Facility and at greater distance from sensitive receptors. Noise impacts during construction will be limited to any timeframes outlined by local ordinances.</p> <ul style="list-style-type: none"> • Project design will consider natural vegetation and other measures to lessen any project impact on neighboring homes and roads. • SWEB conducted baseline noise monitoring and created a report to measure sound and verify receptors and will incorporate the results into site design. 	
Agricultural land	<p>SWEB conducted initial desktop analysis of the mineral soil group (MSG) makeup of the Facility area, which will inform siting decisions and consultation with NYSDAM on mitigation activities. In circumstances where impact to MSG 3 and 4 cannot be avoided, SWEB will make payment to a designated fund. SWEB will conform to the NYSDAM guidelines for solar energy projects – construction mitigation for Agricultural Lands.</p> <ul style="list-style-type: none"> • Land that has been used for agriculture is favorable to solar development because it has been previously disturbed (reducing need to cut trees) and typically does not have steep slopes. • Solar facilities can provide a form of preservation for agricultural land. This form of development can prevent more environmentally disruptive and permanent development in the location, preserve the existing topsoil, and promote the continuation of local flora and fauna to maintain and maximize habitat diversity. • The land can be returned to agricultural use once the Project has been decommissioned. • Additionally, SWEB plans to co-locate sheep grazing underneath the solar arrays and manage the land consistent with low impact development strategies, planting native ground cover under the arrays and local pollinators around the perimeter of the Facility. • The Project design and layout has been created in communication with the Landowner to facilitate continued agricultural practices outside the Fenced area of the Facility. 	<p>NYS Dept of Agriculture and Markets Guidelines for Solar Energy Projects: Exhibit E. NYS Dept. of Agriculture and Markets Guidelines for Solar Energy Projects - Construction Mitigation for Agricultural Lands (1).pdf</p>

Community Engagement Plan

3.3 Environmental Justice and Disadvantaged Communities

SWEB conducted a desktop analysis to determine whether environmental justice (EJ) communities are present within the project vicinity to inform potential outreach styles and activities. Per NYSDEC Environmental Justice Policy CP-29, potential Environmental Justice areas include census block groups featuring populations that meet or exceed at least one of the following statistical thresholds:

- At least 52.42% of the population in an urban area reported themselves to be members of minority groups; or
- At least 26.28% of the population in a rural area reported themselves to be members of minority groups; or
- At least 22.82% of the population in an urban or rural area had household incomes below the federal poverty level (NYSDEC, 2021).

After a review of NYSDEC’s Potential Environmental Justice Areas (PEJA), there are no potential EJ communities within one mile of the Facility area. As demonstrated in Figure 1 the nearest PEJA community (Census Block Group ID: 15000US360957402005) is approximately 9 miles northwest of the easternmost parcel of the Facility Site in Schoharie, New York, followed by an additional Census Block (15000US360957406002) approximately 10 miles southwest in Breakabeen, New York. See Figure 1.

SWEB conducted a desktop analysis to determine if any Disadvantaged Communities, as set forth in the NYS Department of Environment Conservation Climate Justice Working Groups 2023 criteria, are present or in proximity with the Project area. As demonstrated in Figure 2, the closest area designated as Disadvantaged Community is approximately 10 miles away. SWEB plans to seek local labor from within this community where possible, with a commitment in certain positions to finding labor from this community. See Figure 2.

4 Outreach Strategy

4.1 Outreach Goals

The primary purpose of this Community Engagement Plan is to detail a strategy for engaging key stakeholder groups. SWEB will provide focused stakeholder outreach to residents and businesses near the Facility area, as well as regional entities such as schools, utilities, hospitals, emergency responders, airports, parks and recreational facilities, and local businesses. The Plan will enable stakeholders to participate and be involved throughout project development, to obtain information of interest, express concerns and provide input, and have those concerns considered by SWEB as part of the decision-making process. This will be accomplished by implementing a stakeholder engagement strategy that carefully works to establish and maintain trusted relationships.

The goals of the Plan include:

- Identify agencies, groups, and individuals with a potential interest in the Project;
- Devise strategies, tools, and tactics for targeted and successful engagement;
- Ensure stakeholders are engaged in the Project development process by disseminating information and providing an outlet by which they can stay informed;
- Provide stakeholders the opportunity to provide input, so that SWEB can carefully consider their concerns during Project development; and
- Offer stakeholders transparency and open dialogue surrounding decision-making.

4.2 Targeted Stakeholder Groups

Community Engagement Plan

The Plan identifies the following stakeholder groups (detailed listing provided in Appendix A) for targeted outreach:

- Federal Agencies
- State Agencies
- County Agencies
- Local Agencies
- Elected Officials
- Industry and Local Businesses
- Non-profits and Special Interest Groups
- Landowners
- Community Members

To develop this list of targeted stakeholders, SWEB relied on lessons learned from past projects and a desktop search of stakeholders within the vicinity of the Project. Descriptions of stakeholder groups are provided within this section, and a comprehensive list of stakeholders is provided in Appendix A. SWEB will continue to update this list of stakeholders as outreach efforts are performed and additional interested parties are identified. Stakeholder groups are defined below. This Plan also provides a detailed outreach approach for all groups and identifies tailored strategies for specific groups where applicable.

Government Agencies

Government agencies play an important role in the planning and permitting process for solar energy generation projects. SWEB identified key government agencies based on the location of the Project; the potential presence of natural and cultural resources at the Project; and potential construction impacts during project development. Local and State contacts have been included in Appendix A.

Elected Officials

SWEB identified relevant representatives in the area of the Project, including representatives from the New York State Legislature, the U.S. Senate, and the U.S. Congress. SWEB also identified Town Boards and County Boards representing the Facility area. Town Supervisors, the County Administrator, and/or Town Clerks will be contacted as the main point of contact for local elected officials. SWEB anticipates that elected officials will serve as an important resource for effective and targeted communication with local communities.

Industry and Local Businesses

SWEB believes that the Project can harmoniously co-exist with other industries and local businesses that have assets or interest in the area. As such, SWEB searched for utilities, airports, Chambers of Commerce, local businesses, and labor groups within the vicinity of the Project Area and has identified them as potential stakeholders.

Non-Profits and Special Interest Groups

SWEB identified non-profits and special interest groups that are impacted by, involved in and may have an interest in the Project, such as the New York Independent System Operator (NYISO), conservation and environmental groups, recreation groups, school districts, religiously affiliated organizations, and community groups. SWEB began consultation and the application process with NYISO in January 2020 and is in close contact throughout the Facilities Study which is set to complete in September 2024. SWEB anticipates that conservation and environmental groups will play an important role as Project proponents within the rest of the development process.

Landowners

Landowners are those residents that have entered into a lease, easement, purchase option, or setback agreements associated with the construction and operation of the Project. Participating landowners are included in the Plan as one group, but SWEB primarily communicates with landowners individually. To protect their privacy, a list of landowners and their contact information has been omitted from this Plan. Discussions and negotiations with landowners are considered confidential information and are outside the scope of this Plan.

Community Members

Community Engagement Plan

Community members are included in the stakeholder list as one group. Due to the group's size, outreach is conducted at the group-level rather than the individual-level and is primarily conducted via the Project website, and in-person public community engagement sessions. Outreach materials will contain instructions on how individuals can sign up to receive regular project updates.

4.3 Outreach Tools

The presentation of maps, geographic-specific information and research, and other Project-specific information will be utilized in stakeholder engagement.

The following will be utilized during stakeholder meetings and outreach efforts:

- **Project Website.** The Project website will be live in the Fall of 2024 and will serve as the central repository for sharing Project information with the public throughout the development process and will be regularly updated. This will be the primary method of communication as it offers key information in a format that can be accessed anywhere with internet connection. Information presented on the website will include Project description and location, Project benefits, Project maps and fact sheets, milestones and timeline, contact information, information relevant to the permitting and development process, notices for public community engagement sessions, the Community Engagement Plan, educational information about solar development, and instructions on how to sign up for the mailing list. Contact information will be available on the Project website for feedback and inquiries.
- **Record of Engagement.** SWEB tracks its engagement activities with stakeholder groups in order to maintain a record of engagement efforts and responses (Appendix B).
- **Project Maps.** Visual display of information is critical in conveying Project information in a format that is easily digested by interested stakeholders. SWEB will utilize graphic displays and maps to present and illustrate project information at an appropriate level of detail for the targeted stakeholder.

4.4 Outreach Tactics

Certain strategies will be incorporated into outreach efforts based on the targeted stakeholder group. Based on the census data presented in Table 1, SWEB intends to disseminate Project-related materials solely in English. Multiple strategies may apply to the same group and are further outlined in Appendix B. Outreach tactics may include the following:

- **One-on-one Meetings.** At the request of stakeholders and as deemed necessary, SWEB will meet with stakeholders either in person or over the phone, depending on the stakeholder's preference, to discuss the Project, obtain input, and address stakeholder comments or concerns.
- **Group Meetings.** Possible small group meetings may include town- and county-level small group meetings, agency permitting-related meetings, and non-profit/special interest group roundtables to discuss the Project, obtain input, and address stakeholder comments or concerns.
- **Public Meetings.** Public meetings will be held in Project area communities to accommodate outreach efforts aimed at larger groups.
- **Press Releases and Media.** SWEB will write press releases and engage local media to enhance and expand the ability to inform interested parties of Project activities. SWEB will collaborate with local elected officials to identify appropriate outlets for effectively disseminating Project information.
- **US Mail and Email.** SWEB will arrange letters to certain groups of Project stakeholders via US Mail. Other parties may receive Project information via email.

4.5 Public Meetings

Community Engagement Plan

SWEB will host public community engagement sessions regarding the Project in alignment with ORES pre-application procedures. This includes consultation with local agencies no less than 60 days prior to filing an application under Section 19 NYCRR § 900-6.4(o)(4)(iii)(c) regulations and meeting with community members no less than 60 days prior to filing the Application.

During each meeting, SWEB will provide information about the proposed project, including, but not limited to:

- A description of the proposed Facility and its environmental setting;
- A map of the proposed Facility showing project components and regulatory boundaries;
- A designated contact person, with telephone number, email address and mailing address, from whom information will be available on a going-forward basis, as well as the project website to disseminate information to the public; and
- An anticipated application date and information regarding the future availability of local agency account funds.

In addition, as part of local agency consultation, SWEB will provide information regarding:

- A summary of the substantive provisions of local laws applicable to the construction, operation, maintenance, and decommissioning of the proposed Facility; the anticipated application date and information regarding the future availability of local agency account funds,
- An explanation of all efforts by the applicant to comply with such substantive local law provisions through the consideration of design changes to the proposed Facility, or otherwise; and
- Any potential impacts of the Facility for which consultation with the municipality is required to inform the preparation of the exhibits to the application (including, but not necessarily limited to, transportation and visual resources).

SWEB anticipates that public community engagement sessions will be held in the evening hours on a weekday to accommodate the schedules of community members. The meeting with local agencies will accommodate scheduling preferences of the agency representatives.

The first public meeting is anticipated to be held in October 2024 and the meetings will be carried out throughout the construction process until COD to continue open communication with the community.

The following will be considered for implementation of public meetings:

- **Format.** The public meetings will be conducted in an open house format, whereby SWEB will set up various presentation boards and informational stations that community members can circulate to. At each “learning” station, community members can have conversations with SWEB team members to learn more about specific or general topics relating to the project. These meetings provide an open, approachable environment for local community stakeholders who otherwise may not feel comfortable coming forward to ask questions and learn more.
- **Meeting materials.** SWEB will develop various meeting material, including a PowerPoint (or other format) presentation, fact sheets, sign-in sheets (or digital register from meeting), and comment forms (or information collected from digital prompts). Other meeting materials may be included if deemed necessary and pending digital/in-person event status, such as posters, hard copies of maps depicting the Facility area, transcript of the Q&A period (if virtual) and hard copies of presentation slides. Materials will be posted on the Project website following the meetings.
- **Notification.** Notice of public meetings will be provided no sooner than thirty (30) calendar days and no later than fourteen (14) calendar days prior to the meeting. Notice will be published in a local newspaper serving the region if available and a free regional publication if available. SWEB will also post meeting information on its website to make certain all potentially interested stakeholders are aware of the upcoming event. SWEB will also inform local elected officials of any planned meetings in their communities and will consult with them, as available, on the most effective method for outreach to their constituents. For the

Community Engagement Plan

public meeting conducted in adherence to Section 19 NYCRR § 900-6.4(o)(4)(iii)(c) regulations, SWEB will also provide written notice to all residents within 1 mile of the Facility area.

4.6 Project Representatives

SWEB has a designated three company contacts who will implement the Plan and who are available to answer questions from stakeholders:

Drew Rogerson Project Developer Phone: 508-647-0680 drew.rogerson@sweb.energy	Taylor Lord Project Developer Phone : 617-777-3358 taylor.lord@sweb.energy	Joe Mendelsohn CEO- SWEB Development USA, LLC Phone: (774) 526-0155 joe.mendelsohn@sweb.energy
--	---	---

5. Project Benefits

Unlike a conventional power generating facility, solar provides energy without emitting pollutants that affect air quality. Additionally, the Project will offer various socioeconomic benefits delineated below.

- The Project will create an anticipated 104 jobs during construction and will support 1.5 full time operating jobs, benefitting the community, spurring local economic development, and supporting CLCPA goals.
- Tax revenues through a payment in lieu of taxes (PILOT) and a host community benefit agreement payment for the first 10 years of the Project’s operational lifetime will provide annual revenues to the County, Town, and school districts.
- Where possible, materials such as gravel and concrete will be sourced from within New York State.
- The Facility can be used for educational opportunities such as tours for residents and schools to teach about renewable energy.
- Long term lease payments provide benefits to the landowner.

6. References

Data Commons. Schoharie County . Available at:

https://datacommons.org/place/geoId/3665585?utm_medium=explore&mprop=count&popt=Person&hl=en
. Accessed July 2024.

Schoharie County. Town and Village of Schoharie Comprehensive Plan. Available at: [Schoharie CP \(schohariecounty-ny.gov\)](https://www.schohariecounty-ny.gov) . Accessed July 2024.

Town & Village of Schoharie Comprehensive Plan. Town & Village of Schoharie. January/February 1997.
Available at: <https://www4.schohariecounty-ny.gov/PdfFiles/TSCH/CompPlan/SchoharieCP.pdf>.
Accessed February 2023.

New York State Department of Environmental Conservation (NYSDEC). NYSDEC 2023. Maps & Geospatial Information System (GIS) Tools for Environmental Justice. Available at:
<https://www.dec.ny.gov/public/911.html>. Accessed February 2023.

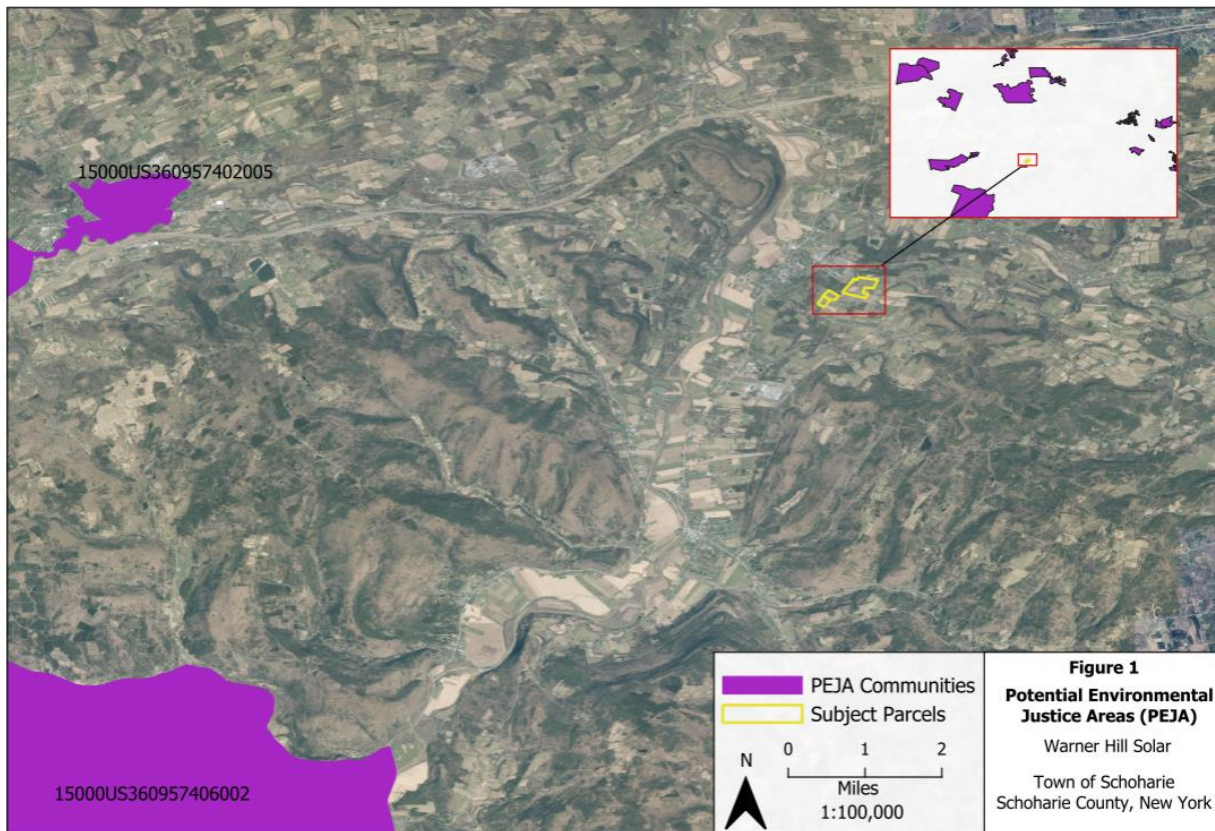
U.S. Census Bureau. US Census 2023. Characteristics of People by Language Spoken at Home. Available at:
<https://data.census.gov/cedsci/table?t=Language%20Spoken%20at%20Home&g=0500000US36033&tid=ACST5Y2019.S1603&hidePreview=true>. Accessed February 2023.

U.S. Census Bureau. US Census 2022. Language Spoken at Home. Available at: [S1601: Language Spoken at Home - Census Bureau Table](https://www.census.gov/data/tables/2022/c2kbr/languagespoken.html). Accessed July 2024.

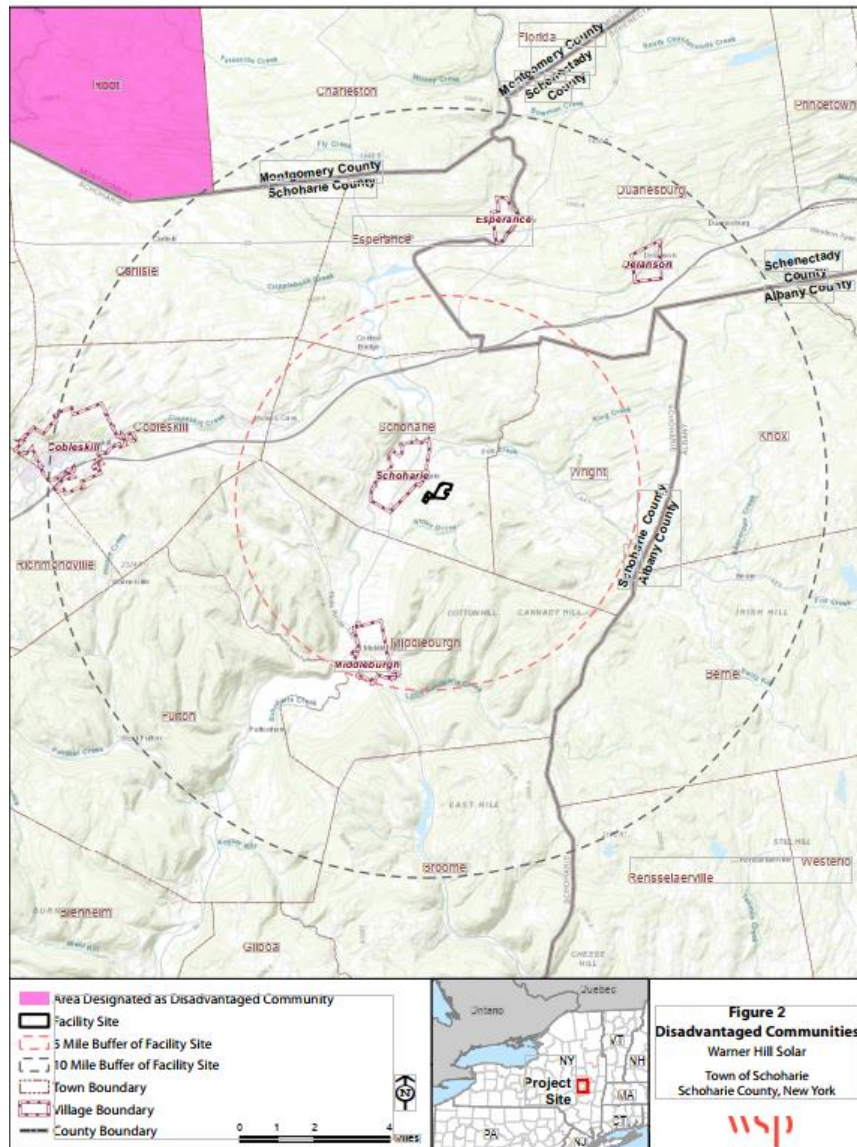
Community Engagement Plan

U.S. Environmental Protection Agency. US EPA 2024 Greenhouse Gases Equivalencies Calculator. Available at: <https://www.epa.gov/energy/greenhouse-gas-equivalencies-calculator> . Accessed July 2024.

7. Figures



Community Engagement Plan



Community Engagement Plan

Appendix A: Stakeholder List

Affected State and Federal Agencies	
<p>Empire State Development Corporation Steve Hunt, North Country Director 61 Area Development Drive, Plattsburgh, NY 12901 (315) 785-7907 nys-northcountry@esd.ny.gov</p>	<p>NYS Department of Agriculture and Markets Tara Wells, Senior Attorney 10B Airline Drive, Albany, NY 12235 (518) 457-8876 Tara.Wells@agriculture.ny.gov</p>
<p>National Telecommunications and Information Administration Alan Davidson, Assistant Secretary Herbert C. Hoover Building (HCHB) U.S. Department of Commerce, 1401 Constitution Avenue, N.W. Washington, DC 20230 (202) 482-1840 Email not available</p>	<p>NYS Department of Agriculture and Markets Michael Saviola, Associate Environmental Analyst 10B Airline Drive, Albany, NY 12235 (518) 457-1059 michael.saviola@agriculture.ny.gov</p>
<p>New York Independent System Operator Richard Dewey, President & CEO 10 Krey Boulevard, Rensselaer, NY 12144 (518) 356-6000 Email not available</p>	<p>New York State Energy Research and Development Authority Doreen Harris, President and CEO 17 Columbia Circle, Albany, NY 12203 (518) 862-1090 Doreen.Harris@nyserda.ny.gov</p>
<p>New York State Energy Research and Development Authority Richard Kaufmann, Chair 17 Columbia Circle, Albany, NY 12203 (518) 862-1090 info@nyserda.ny.gov</p>	<p>NYS Department of Environmental Conservation Sean Mahar, Interim Commissioner 625 Broadway, Albany, NY 12233-1011 518-402-8545 Sean.mahar@dec.ny.gov</p>
<p>NYS Attorney General Letitia James, Office of the Attorney General Albany, NY 12224-0341 Email not available</p>	<p>NYS Department of Environmental Conservation Daniel Whitehead, Director, Division of Environmental Permits, Major Projects Management 625 Broadway, Albany, NY 12233-1750 (518) 402-9167 deppermitting@dec.ny.gov</p>
<p>NYS Department of Public Service, Office of Electric, Gas, and Water Tammy Mitchell, Director Empire State Plaza Agency, Building 3, Albany, NY 12223 (518) 486-2483 tammy.mitchell@dps.ny.gov</p>	<p>NYS Department of Environmental Conservation, Division of Lands & Forests Fiona Watt, Director 1115 NYS Route 86 Ray Brook, NY 12977 518-402-9405 landsforests@dec.ny.gov</p>
<p>NYS Department of State Walter T. Mosley, Secretary of State One Commerce Plaza, 99 Washington Avenue, Albany, NY 12231-0001 (518) 473-2492 Email not available</p>	<p>NYS Department of Health James V. McDonald, Commissioner Corning Tower Empire State Plaza, Albany, NY 12237 518-474-2011 Email not available</p>

Community Engagement Plan

Affected State and Federal Agencies

<p>NYS Department of Public Service Rory Christian, Chair and CEO Empire State Plaza Agency, Building 3, Albany, NY 12223 (518) 474-2523 <i>Email not available</i></p>	<p>NYS Department of Public Service James Denn, Director of Public Affairs Empire State Plaza Agency, Building 3, Albany, NY 12223-1350 (518) 474-7080 james.denn@dps.ny.gov</p>
<p>NYS Department of Public Service Michelle Phillips, Outreach Contact Empire State Plaza Agency, Building 3, Albany, NY 12223 (518) 474-6530 secretary@dps.ny.gov</p>	<p>NYS Department of Public Service Robert K Jucha, Utility Specialist II General Counsel's Office Three Empire State Plaza, (518) 474-5452 robert.rosenthal@dps.ny.gov</p>
<p>NYS Department of Transportation, Region 9 Andy Stiles, P.E., Regional Director 44 Hawley Street, Binghamton, NY 13901 (607) 721-8116 <i>Email not available</i></p>	<p>NYS Department of Transportation, Marie Dominguez, Commissioner 50 Wolf Road, Albany, NY 12232 (518) 457-4422 <i>Email not available</i></p>
<p>NYS Division of Homeland Security and Emergency Services John P. Melville, Commissioner 1220 Washington Avenue, State Office Campus, Building 7A Suite 710, Albany, NY 12242 (518) 242-5000 DHSESPIO@dhses.ny.gov</p>	<p>NYS Governor's Office Kathy Hochul, Governor of NY New York State Capitol Building, State Street and Washington Avenue, Albany, NY 12224 (518) 474-8390 <i>Email not available</i></p>
<p>NYS Office of Parks, Recreation and Historic Preservation Erik Kulleseid, Acting Commissioner NYS Office of Parks, Recreation and Historic Preservation Albany NY, 12238 (518) 474-0456 Erik.Kulleseid@parks.ny.gov</p>	<p>New York State Department of Health (Schoharie District) 113 Park Place, Suite 3 (518) 295-2001 ofa@co.schoharie.ny.us</p>
<p>New York State Assembly Edward P. Ra, District 19 825 East Gate Boulevard Suite 207 Garden City, NY 11530 (516) 535-4095 rae@nyassembly.gov</p>	<p>US Senate Charles E. Schumer, US Senator Leo O'Brien Building, Room 827, Albany, NY 12207 (518) 431-4070 <i>Email not available</i></p>
<p>New York State Senate Peter Oberacker, NYS Senator, District 51 41 South Main Street, Oneonta, NY 12820 (607) 432-5524 stec@nysenate.gov oberacker@nysenate.gov</p>	<p>US Senate Kirsten E. Gillibrand, US Senator Leo O'Brien Building, Room 821, Albany, NY 12207 (518) 431-0120 <i>Email not available</i></p>

Community Engagement Plan

Affected State and Federal Agencies

US Federal Aviation Administration
 Marie Kennington- Gardiner, Eastern Regional
 Administrator
 1 Aviation Plaza, Jamaica, NY 11434
 (718) 553-3295
Email not available

US Army Corps of Engineers (USACE), New York District
 Colonel Alexander Young, Commander and District
 Engineer
 Jacob K. Javits Federal Building, 26 Federal Plaza,
 Room 17-302, New York, NY 10278-0090
 (917) 790-8007
Cenan-pa@usace.army.mil

US House of Representatives
 Elise Stefanik, Representative, District 21
 318 Cannon House Office Building
 Washington, DC 20515
 (202) 225-4611
Email not available

US Fish and Wildlife Service, New York Field Office
 David Stilwell, Field Supervisor
 3817 Luker Road, Cortland, NY 13045
 (607) 753-9334 ext. 0606
david_stilwell@fws.gov

Office of Renewable Energy Siting
 Application Review
 c/o OGS Mailroom
 Empire State Plaza
 240 State Street, P-1 South, J Dock
 Albany, NY 12242
 (518) 473-4590

U.S. Army Watervliet Arsenal
 Public Affairs
 1 Buffington St, Watervliet, NY 12189,
 United States
 (518)266.5055
usarmy.watervliet.tacom.list.wvapublicaffairs@army.mil

Local Agencies

Schoharie County
 William Federice, Chairman
 832 South Mountain Road
 Gilboa, NY 12076
 (607) 588-7211
Email not available

Schoharie County Office of Emergency Services
 Michael Hartzel, OES Director
 518-295-2276
Email not available

Schoharie County Real Property Tax Services
 Lisa Thom, Director
 284 Main St., Suite 125A, PO Box 308,
 Schoharie, NY 12157
 (518) 295-8349
Email not available

Schoharie County Planning Agency
 Shane Nickle, Director
 276 Main Street, Suite 2
 PO Box 396
 Schoharie, NY 12157
 (518) 295-8770
shanenickle@co.schoharie.ny.us

Schoharie County Department of Public Health
 Nicole M. Blanchard DrPH & MPH, Director of Public
 Health
 PO Boc 667, 284 Main Street, Schoharie, NY 12157
 (518) 295-8365
health@co.schoharie.ny.us

Schoharie County Soil & Water Conservation District
 Peter Nichols, District Manager
 173 South Grand Street, Suite 3
 Cobleskill, NY 12043
 (518)823-4535
p.nichols@schoharieswcd.org

Community Engagement Plan

Local Agencies	
<p>Town of Schoharie, Town Clerk Pamela Foland, Town Clerk 300 Main St, Schoharie, NY 12157 (518) 295-6570 schoharietownclerk@midtel.net</p>	<p>Town of Schoharie, Supervisor Benjamin J Oevering, Supervisor 300 Main St, Schoharie, NY 12157 (518) 295-6570 schoharie.supervisor@co.schoharie.ny.us</p>
<p>Schoharie County Highway Department Dan R. Crandell, Commissioner 393 Main St., Schoharie, NY 12157 (518) 295-2330 eadams@franklincony.org</p>	<p>Schoharie County, Town Clerk Pamela Foland, Town Clerk P.O. Box 544, Schoharie, NY 12157 518-295-6570 schoharietownclerk@midtel.net</p>
<p>Town of Schoharie, Public Works Department Dan R. Crandell, Commissioner 393 Main St., Schoharie, NY 12157 (518) 295-2330</p>	<p>Town of Schoharie Don Massey, Zoning Board Chairman PO Box 764 Schoharie, NY 12157 518-231-7570 <i>Email not available</i></p>
<p>Town of Schoharie Code Enforcement Cliff Dorrough, Code Enforcement Officer P.O Box 544, Ste 6 Schoharie, NY 12157 (518) 295-6572483-4570 codes12157@midtel.net</p>	<p>Schoharie Town Assessor Erin Smith, Assessor 300 Main Street P.O. Box 485 Schoharie, NY 12157 518-295-6571 assessorcap1@midtel.net</p>

Municipalities and School Districts in the Facility area
<p>Schoharie Central School District David M. Blanchard, Superintendent 136 Academy Drive Schoharie, NY 12157 (518) 295-6679 dblanchard@schoharieschools.org</p>

Additional Stakeholders	
<p>Schoharie Town Historian Name not available (518) 295-7341 Email not available</p>	<p>Adirondack Mountain Club – Black River Chapter Janine Johnson, Chair Watertown, NY (315) 782-0651 janine.m.johnson@verizon.net</p>

Community Engagement Plan

Additional Stakeholders

Alliance for Clean Energy New York

Marguerite Wells, Executive Director
 119 Washington Avenue, Suite 103
 Albany, NY 12210
 (518) 432-1405
info@aceny.org

Franklin County Farm Bureau

April Gokey President
 159 Wolf Road, Suite 300
 Albany, NY 12205
 518-572-2636
Email not available

Albany International Airport

737 Albany Sharker Rd,
 Albany, NY 12211
 (518) 242-2222
 Email not available

Schoharie Library

Yvonne Keller-Baker, Director
 103 Knower Ave
 Schoharie, NY 12157
 (518)295-7127
Ykeller-baker@mvls.info

New York State Conservation Council

A. Charles Parker, President
 1060 Broadway #1090
 Albany, NY 12204
 (315) 894-3302
nyscc@nyscc.com

New York Forest Owners Association – Capital District Chapter

Jason Post, Chair
 (518) 965-9183
postjasonr@gmail.com

New York Agricultural Land Trust

Brandy Colebrook, Executive Director
 New York Agricultural Land Trust, PO Box 216
 Elbridge, NY 13060
 (518) 860-6115
info@nyalt.org

New Yorkers for Clean Power

Elinor (Len) Luka, Renewables Outreach Coordinator
 102 Saint James Street
 Kingston, New York 12401
 1 845-204-8524
Len@nyforcleanpower.org

New York Public Interest Research Group

107 Washington Avenue,
 Albany, NY 12210
 (518) 436-0876
nypirg@nypirg.org

Sierra Club – Atlantic Chapter

Roger Downs, Conservation Director
 744 Broadway, Albany, NY 12207
 (518) 426-9144 ext. 101
roger.downs@sierraclub.org

Community Engagement Plan

Appendix B: Record of Engagement

This tracking document will be updated as the Project progresses.

Completed and/or Anticipated Dates	ORES Permitting Section	Activity/ Milestone	Stakeholder	Outreach Goals	Notes
Ongoing		Landowner Consultation	Landowners	Contact landowners to initiate conversations regarding leases, easements, purchase options, and/or setback agreements associated with the construction and operation of Project facilities	The landowner has been engaged and under contract since July of 2019.
Ongoing		Initial Town and/or County Board Consultation	Town Board, County Board	<ul style="list-style-type: none"> • Provide background on the Project • Identify appropriate points of contact • Identify areas of interest in Project development process • Discuss timeline and describe methods and opportunities for input and feedback 	The previous Town supervisor has been provided project details/POC in 2019 and again in August of 2022 via telephone. SWEB will continue to update and communicate with the Town through permitting process, construction process, and ongoing operations.
Ongoing		Launch Project website	All	<ul style="list-style-type: none"> • Create Project website • Basic introduction to the Project • Educational materials • Outline Project timeline • Add point of contact and instructions for getting on the stakeholder list 	Launch in September 2024. As the project progresses, the website will be regularly updated with additional Project information.

Community Engagement Plan

Completed and/or Anticipated Dates	ORES Permitting Section	Activity/ Milestone	Stakeholder	Outreach Goals	Notes
Ongoing		Contact with concerned abutters	Community Members	<ul style="list-style-type: none"> • Hold discussions with abutters to identify community concerns and address any questions. 	Contact initiated in 2021. Continued communication throughout the permitting and development process.
At least 60 days before filing Application Anticipated October 2024	900-1.3(a)	Consultation with Local Agencies. Proof of pre-application meeting(s) conducted no less than 60 days before application filing.	Town of Schoharie	Provide the following: <ul style="list-style-type: none"> • A brief description of the proposed Facility and its environmental setting; • A map of the proposed Facility showing project components and regulatory boundaries; • A summary of the substantive provisions of local laws applicable to the proposed Facility; • An identification of local laws for which the applicant will request a finding that compliance therewith would be unreasonably burdensome; • An explanation of all efforts to comply with local law provisions; • A summary of potential impacts for which consultation is required to inform the preparation of the exhibits; • Identification of a designated contact person and project website to disseminate information to the public; and • Anticipated application date and information regarding the future availability of local agency account funds. 	

Community Engagement Plan

Completed and/or Anticipated Dates	ORES Permitting Section	Activity/ Milestone	Stakeholder	Outreach Goals	Notes
At least 60 days before Application filing Anticipated October 2024	900-1.3(b)	Meeting with community members.	Community members and key stakeholders	Provide the following: <ul style="list-style-type: none"> • A brief description of the proposed Facility and its environmental setting; • A map of the proposed Facility showing project components and regulatory boundaries; • A summary of the substantive provisions of local laws applicable to the proposed Facility; • A summary of potential impacts for which consultation is required to inform the preparation of the exhibits; • Identification of a designated contact person and project website to disseminate information to the public; and • Anticipated application date and information regarding the future availability of local agency account funds. 	
Completed: April 23, 2021		Natural Heritage Program Consultation	NYSDEC	SWEB initiated consultation with NYSDEC to request review of the New York Natural Heritage Program database regarding rare or state-listed animals or plants or significant natural communities at the project site or its immediate vicinity.	SWEB received a response on June 4, 2021 that there are no such records.
Completed: June 13, 2022	900-1.3(g)(4)	NYS Threatened or Endangered Species Consultation (via wildlife site characterization)	ORES, NYSDEC	Provide agencies with a copy of any habitat assessments conducted for review.	SWEB provided its pre-con Avian Study Plan dated May '21 and its Wintering Grassland Raptor Study Plan dated October '21.
Completed: October 20, 2023	900-1.3(e)(3)	Wetland Delineation Consultation	ORES and potentially NYSDEC	Consultation to determine the status of the delineated state-regulated wetlands, coordinate and complete any required site visit(s), and to discuss potential impacts to jurisdictional wetlands.	No impact to Jurisdictional wetlands.

Community Engagement Plan

Completed and/or Anticipated Dates	ORES Permitting Section	Activity/ Milestone	Stakeholder	Outreach Goals	Notes
Completed: October 20, 2023	900-1.3(f)(3)	Water Resources and Aquatic Ecology Consultation	ORES and potentially NYSDEC	Consultation with the Office, and as necessary with the NYSDEC, to determine which waters are state-regulated, coordinate and complete any required site visit(s), and to discuss potential impacts to jurisdictional surface waters.	No impact to Jurisdictional water resources.
Completed: October 20, 2023	900-1.3(h)	Archaeological Resources Consultation	ORES, OPRHP	Submit the results of the Phase IA study to the Office, obtain determination on potential need for Phase IB field study, and consult with Office and OPRHP as required on scope and content of Phase IB field study.	Initial consultation was held in October 2023.
Completed: January 19, 2023	900-1.3(g)(2)	NYS Threatened or Endangered Species Consultation (via wildlife site characterization)	ORES, NYSDEC	Provide the results of the wildlife site characterization and meet with the Office and the NYSDEC (within 4 weeks of delivery of the draft wildlife site characterization) to obtain feedback from agencies on content and conclusions of the wildlife characterization study, on occupied habitat of NYS listed species potentially present in the Facility area, and regarding recommended habitat assessments and/or field surveys that can be completed in the appropriate seasonal windows within one year.	SWEB provided a draft Wildlife Site Characterization Report dated March 2021 and met with ORES and NYSDEC to obtain feedback on January 19, 2023.
Completed: January 19, 2023	900-1.3(g)(3)	NYS Threatened or Endangered Species Consultation (via wildlife site characterization)	ORES, NYSDEC	Provide agencies with a copy (or copies) of any applicant-conducted habitat assessment(s) indicating that suitable habitat for a given species is no longer present at the site, for review and a determination as to whether surveys shall be required.	
Completed: January 19, 2023	900-1.3(g)(5)	NYS Threatened or Endangered Species Consultation (via wildlife site characterization)	ORES, NYSDEC	Submit draft survey reports and relevant GIS shapefiles within 6 weeks of the completion of each study. If NYS listed species are identified, summarize the sightings with detailed location information within 3 weeks of each study's completion.	SWEB provided its Breeding Bird Survey dated September '21 & Winter Grassland Raptor Survey dated May '22.

Community Engagement Plan

Completed and/or Anticipated Dates	ORES Permitting Section	Activity/ Milestone	Stakeholder	Outreach Goals	Notes
Completed: January 11, 2023	900-1.3(g)(6)	NYS Threatened or Endangered Species Consultation (via wildlife site characterization)	ORES, NYSDEC	Review the results of the habitat assessment(s), survey(s), and current Facility design and discuss the requirements for the Net Conservation Benefit Plan (if applicable).	SWEB and ORES/NYSDEC held an Occupied Habitat Take and Net Conservation Benefit Plan Conference on January 11, 2023 and SWEB received the Occupied Habitat Take on January 18, 2023.