



Exhibit 36

Community Engagement Plan
Submitted to the New York State
Energy Research and Development
Authority by New Leaf Energy on
August 8th, 2024



Table of Contents

Abbreviations.....	4
Glossary of Terms	5
1.0 Introduction	6
2.0 Project Overview	7
3.0 Community Engagement Program Overview.....	9
4.0 Stakeholders.....	9
5.0 Community Engagement Plan Elements.....	10
6.0 Environmental Justice Area.....	12
7.0 Language Access.....	13
8.0 Conclusion.....	14

List of Attachments

Attachment 1: Stakeholder List

List of Figures

Figure 1: Regional Location Map

Figure 2: Project Area

Figure 3: Study Area



Abbreviations

AHJ	Authority Having Jurisdiction
CLCPA	Climate Leadership and Community Protection Act
dB	decibel
kV	kilovolt
MW	megawatt
NOI	notice of intent
NYS	New York State
PV	photovoltaic



1.0 INTRODUCTION

The Moss Ridge Solar Project (Facility) will have a generating capacity of 60 megawatts (MW) alternating current (AC) and will be located on land leased from owners of private property in the Town of De Kalb. Proposed Facility components include commercial scale solar photovoltaic (PV) arrays, access roads, inverters, fencing, electric collection lines, and electrical interconnection facilities. The solar array locations and related infrastructure are included within Appendix 5. The collection substation will collect the power generated from the solar modules via collection lines located throughout the Facility. A new proposed interconnection line will originate from the collection substation and extend from the Facility Site to the existing National Grid Tap Line Corning – Battle Hill 115 kV transmission line #4. The project is anticipated to be start construction in 2026 and begin commercial operation in 2029.

The project is considered a Major Renewable Energy Facility and the Project Team plans to submit an application to ORES in September of 2024. This Community Engagement Plan describes the Project team’s public outreach and involvement activities that will be applied throughout the development phase, including the ORES permitting process. The intent of the CEP is to determine the interest of stakeholders and address concerns as the development of the Project advances. The CEP presents the proposed Project, and it is presently envisioned, identifies anticipated interested parties and stakeholders, outlines activities planned for stakeholder engagement, and establishes the means by which the public can participate in the process by asking questions and providing comments.

As shown throughout this Application, the Project team anticipates the Facility will help the State reach its climate goals and will have minimal negative impact on neighboring landowners, nearby communities, and surrounding landscapes. The proposed Facility will be relatively low in height, will not directly emit air or water pollution during operations, will have no odors, and will produce minimal noise. The Facility will also use fencing and landscape screening to preserve existing viewsheds and maintain the rural character of the surrounding area. Construction of the Facility is expected to produce minimal traffic through the Towns of De Kalb, which will only occur during construction periods.

The Facility will support stakeholders and the local community by deploying clean, renewable energy and enhancing economic development. Specifically, stakeholders within the region will receive economic benefits from the Facility through construction, operation, and maintenance jobs, as well as expenditures for supplies and materials, lease payments to participating landowners, and tax payments to local communities. These transactions will contribute millions of dollars to the Town of De Kalb, St. Lawrence County, and to school and fire districts in the form of payment in lieu of taxes (PILOT) agreements. Additionally, the Project team has conducted surveys throughout the 94-C process to assess environmental and community impacts, as well as aesthetic and visual impacts to the area surrounding the Facility Site. As described throughout the Application, the Project team has confirmed that minimal costs, both economic and environmental, will be incurred by the local community during the construction and lifespan of the Facility and will be outweighed by the benefits of the Facility.



2.0 PROJECT OVERVIEW

2.1 Company Profile

Moss Ridge Solar 1, LLC is a wholly owned subsidiary of New Leaf Energy. New Leaf Energy is a leading developer of renewable power projects and storage solutions across the United States. New Leaf Energy was founded in 2022 as a spin off from the development wing of Borrego. New Leaf Energy is headquartered in Lowell Massachusetts and has offices in Boston Massachusetts, Troy New York, Chicago Illinois and Oakland California.

2.2 Project Siting and Location

The Project, as proposed, is an approximately 60 megawatt (MW), utility-scale solar facility located on land which will be leased from owners of private property. The local AHJ is the Town of De Kalb, St. Lawrence County, New York (Figure 1), and the local school district is the Gouverneur Central School District. The Project is owned and is being developed by Moss Ridge Solar 1, LLC. The Project team has identified a Study Area to focus their community engagement activities around and for the purposes of this Community Engagement Plan, the Study area is a 2-mile radius from the edge of participating parcels. The Project has executed binding site control over the entire Project Area.

Project facilities will include commercial-scale solar arrays, access roads, buried and overhead electric collection lines, a Project collection substation, and electrical interconnection facilities. The Project team anticipates the interconnection facilities will include a new 115kV, 3-breaker ring bus substation, which will be transferred to National Grid, who will own, operate, and maintain the switchyard. The proximity of the land parcel to the National Grid right-of-way eliminates the need for any additional transmission facilities beyond the proposed new Interconnection Substation. With the entire Project subject to the 94-c application requirements, the outreach activities described in this Community Engagement Plan will address the Project in its entirety including interconnection and solar energy.

The Project team focused on siting panels on land already disturbed and on contiguous parcels to minimize fragmentation of habitats and land use types, and avoid unnecessary interference with continuing agricultural operations. As a result, the overall ecological impacts are limited to temporary and minor permanent impacts to agricultural land (pasture and hay), forested land, and successional shrubland. Areas that are temporarily impacted will be restored to their original condition following the completion of construction. Tree clearing is throughout the site but focused in the southern areas for the siting of solar arrays, fencing, access roads, and inverter pads. By focusing clearing efforts in these areas, fragmentation of forested habitat will be limited and impacts to forestland will not be widespread. In addition, the Project team left existing hedgerows and vegetative barriers where possible.

2.3 Project Benefits

The proposed Project will have positive socioeconomic impacts in the Project Area and beyond through contributions to local tax bases and through local temporary construction employment opportunities. Please see Attachment D for additional details. Aside from the direct benefits of



local employment and spending, indirect benefits to the community would include increased spending in the economy through increased restaurant usage, hotel usage, and gas consumption during the construction of the Project. Local employment will primarily benefit those in the construction trades, including equipment operators, truck drivers, laborers, and electricians. The operation of the facility will require one to two permanent employment positions, with additional occasional work for landscaping, periodic maintenance, and other incidental work. A payment in lieu of taxes (PILOT) will be proposed to provide annual revenues to the host communities and school districts. Landowners hosting Facility infrastructure will also receive annual payments, and additional local revenues are possible through the purchase of construction materials, supplies, services, and goods throughout the life of the Project.

New Leaf understands New York State's commitment in prioritizing the safety and health of disadvantaged communities through implementation of the CLCPA while also seeing there is a continual increase in the demand for energy in the State. This Project will help New York State create a local, emission free, source of energy while maintaining greenspaces and aiding in keeping small family farms in business. During operation, solar projects do not directly emit any greenhouse gases and this Project is not sited within a potential environmental justice community (see Section 6). This Project, along with other renewable energy projects New Leaf is sitting within New York State, aid in meeting energy demands in a non-conventional way. Conventional energy generation is historically sited in areas where disadvantaged populations live, and renewable energy projects help meet this demand without adding greenhouse gases to the atmosphere and consequently impacting these communities disproportionately.

New Leaf has initiated conversations with Jefferson County regarding a PILOT agreement and is committed to working with the county and all tax authorities. In addition, New Leaf has begun outreach with the local AHJ to introduce the Project and understand local community needs.

2.4 Project and Study Areas

Figures 1-3 show the Regional Project location, the Project Area and the preliminary Study Area to be used for community engagement. For the purposes of this document, the Project team is defining The Study Area (as shown in Figure 3) as all areas within at least two (2) miles of the current planned location of Project generating facility components, interconnection, and related facilities.

2.5 Community Profile

There were approximately 2,434 people that live in the town of De Kalb in St. Lawrence County as of 2021. This mostly rural town lies approximately 184 miles northeast of Rochester. The North County Amish community lives and thrives within the Town and surrounding areas.

3.0 COMMUNITY ENGAGEMENT PROGRAM OVERVIEW

3.1 Plan Goals

The Project team has developed this Community Engagement Plan to ensure that comments and concerns of individuals and groups with a potential interest in the Project are objectively considered in the Project design and review. Specific Plan goals are to:

- Identify groups and individuals with a potential interest in the Project, i.e., “stakeholders”;
- Ensure stakeholders are aware of the Project;
- Ensure stakeholders can access information on the Project and the application process in a relatively convenient manner;
- Engage stakeholders to understand their interests related to the Project and seek input as to how to best address their interests and concerns as the Project moves forward; and
- Gather specific information from stakeholders that can be used to identify resources of local concern and to design objective and useful studies to be defined in the scoping and included in a complete Application for the Project.

3.2 Plan Schedule

The Project team has already begun conducting community engagement activities during the pre-application phase and will continue public involvement activities throughout the Application process until the Project begins commercial operation.

4.0 STAKEHOLDERS

The Project team and Project have started to identify stakeholders through discussions with the local Town Board members, community engagement by Project staff, assessment of local organizations, and utilization of geographic information systems (GIS) to determine the regions, districts, and territories covered by agencies, as well as town, county, and state representatives who are expected to take part or have interest in the progression of the Project.

A buffer of the Study Area was created to identify potential stakeholders by proximity. Throughout the permitting process, the Project team will continue to build the Project stakeholder list as community networks connect additional parties to the Project.

Descriptions of stakeholder categories are located in the sections below. Attachment 1 contains the preliminary Project stakeholder list and the current known contact information for each



stakeholder.

5.0 COMMUNITY ENGAGEMENT PLAN ELEMENTS

5.1 Description of Local Engagement and Outreach

The project team has applied an intentional approach to community relationship building based on respect for the local communities, which has positively influenced the Project's relationship with an array of stakeholders. Early in the development process, the Project team engaged the local municipalities and local stakeholders, with the goal of welcoming feedback that informed design and siting decisions as a part of an iterative design process. Over time, the Project team has applied consistent effort to ensuring the Town has an opportunity to communicate concerns and questions regarding the Facility and its impacts on the community. The Project team believes that in-person communication is the most effective communication strategy, and has attended 7 in-person meetings for the Project in the Town of De Kalb so far. There have also been email follow-ups and zoom meetings when necessary.

Materials to encourage stakeholder involvement throughout the 94-C process and disseminate information to stakeholders including site figures and educational materials are included on the Facility website (<https://www.newleafenergy.com/project/moss-ridge-solar>). Updates to public involvement materials occurring after this filing will be posted on the Facility website throughout the 94-C process. Each ORES exhibit will be posted there as well. Exhibit 2 – Overview and Public Involvement will have a list of feedback from the public and affected agencies with the Project team's responses. Information regarding intervenors seeking funds from the local agency account was presented during the community meeting and can be found online on the Facility website. The project team also published multiple notices regarding the project in local newspapers including the Watertown Daily Times and the Ogdensburg Journal. The Facility's primary public contact is Alex Yager (Project Developer) who may be reached via phone at (518) 901-5249 or via email at ayager@newleafenergy.com.

Throughout the application process, the Project team has kept the local boards informed of the project developments. The Town Board has consulted on the Visual Impact Assessment, transportation plan, and more. Please see the table below for a summary of outreach conducted to date, excluding email:

AHJ	Outreach Type	Summary	Date
Development Authority of the North County	In-Person Meeting	Presented the Project to Hartley Bonisteel Schweitzer. We agreed to follow up as the Project progresses.	7/13/21
Town of De Kalb	In-Person Meeting	Presented the Project to John Frary (Town Supervisor), William Chambers (CEO), and Connie Elen (Board Member). The town is supportive of the Project.	7/20/21; 6/21/22
St. Lawrence County IDA	Zoom Meeting	Presented the project to Rich Williams. Went over project information.	7/22/21
Town of De Kalb	Phone Call	Provided the Town Supervisor with an update regarding Phase 1B field work as well as a general project update.	8/25/23
Town of De Kalb	In-Person Meeting	Provided the Town Board with an update on the project and discussed next steps for the community meeting required by ORES. The Town is still supportive but had a few questions. Attended Town Board meeting, provided an update of the project. Requested dates for 60-day conference.	12/20/23
Town of De Kalb	In-Person Meeting	Attended Town Board consultation meeting, provided an update of the project and included examples of ORES exhibits completed to date. Discussed the availability of intervenor funds and our intention to submit an ORES application in late May, early June.	2/21/24
Town of De Kalb	In-Person Meeting	Poster board sessions held with Subject Matter Experts present.	3/21/24
Town of De Kalb	In-Person Meeting	Attended Town Board meeting to answer any outstanding questions related to the project and reiterate our June application date	4/17/24



Outside of attending regular board meetings, the Moss Ridge project hosted a Community meeting as shown above. There were two sessions from 1pm to 3pm and 5pm to 7:30pm at the local fire house. About 20 Community members attended the meeting, including current Facility Site landowners, local officials, and neighboring landowners of the Facility Site. The purpose of the community meeting was to introduce New Leaf Energy and the Facility to the De Kalb community, provide information on the New York State 94-C permitting process, inform the community about next steps in Facility development, and inform the community about how to get involved. Community members and local officials asked a variety of questions during the meeting with respect to impacts to wildlife, decommissioning, timing, and more. Most of the community's questions are thoroughly studied and investigated as a part of the ORES process. Significant studies have been completed to minimize and mitigate impacts to wildlife. ORES also requires the Project to post a decommissioning bond that covers 100% of the cost of decommissioning. This amount must be refreshed every 5 years to account for inflation. Since the Project is already on the last phase of its interconnection studies, timing for the start of construction will be dependent on the ORES permit. One of the concerns noted by nearby residents was the impact the project would have on the character of the community. In response to this, New Leaf proposed adding plantings as visual mitigation. The plantings are proposed to be along County Route 18 and 20.

The Project team will track the community engagement and provide updates on public outreach activities to stakeholders upon request. Future outreach is expected to occur on a quarterly basis, and will likely pick up during PILOT negotiations. Additionally, the Town of De Kalb will be notified when the Project gets closer to construction of the date construction will start. The Town of De Kalb will also be consulted for a Building Permit and Driveway Access Permit before the start of construction.

6.0 ENVIRONMENTAL JUSTICE AREAS

The United States Environmental Protection Agency (USEPA) provides a screening tool of Potential Environmental Justice Areas (EJA) it identifies as census block groups with populations that meet one or both of the following thresholds:

- the minority population of the affected area exceeds 50 percent; or
- the minority population percentage of the affected area is meaningfully greater than the minority population percentage in the general population or other appropriate unit of geographic analysis.



According to a review of a USEPA EJ Screen Tool which utilized 2018 data, there are two Potential EJA within St. Lawrence County. These include to the northeast of the city of Ogdensburg and east of the Town of Gouverneur.

The closest potential EJA, Census Block Group ID 360894927007 is located approximately 4 miles west of the Project Area (from the closest point), near the town of Gouverneur. The block group has an estimated population of 1,870. It is categorized as a rural area, where 38 percent of the population is a minority, measuring in the 52nd percentile of the national average. Because the areas above are outside the Study Area, the Project will not negatively impact this or any other potential Environmental Justice Area.

7.0 LANGUAGE ACCESS

This Community Engagement Plan identifies languages other than English spoken by 5,000 or more persons, according to United States Census data, residing in any five-digit zip code postal zone in which any portion of such zone is located within the Study Area; and (2) by a significant population of persons residing in close proximity to the proposed facility, alternative locations, or interconnections. Table 1 lists the five-digit zip codes extending into the Study Area and the most prevalent non-English languages spoken, based on the 5-year American Community Survey estimate from 2014-2018.

Table 1. Number of Residents of Study Area Zip Codes who speak a Language Other than English						
Zip Code	Post Office	Total Population	Speaks a Language other than English	Percentage of the population that speaks Language other than English	Most Prevalent Non English Language Spoken	
					Language	Number
13681	Richville	782	5	0.6%	Other Indo-European	4
Source:	2014-2018 American Community Survey (ACS) 5-Year Estimate, Table S1601: Language Spoken at Home (for the Population 5 Years and Over)					

As shown above in Table 1, no language other than English is spoken by more than 5,000 people residing in any zip code within the Study Area. Based on these findings, the Project team is not proposing to disseminate Project related materials in a second language.



8.0 CONCLUSIONS

Exhibit 36 provides an overview of the proposed Facility, descriptions of its components, and key studies and areas of analyses. The exhibit also provides a description of local engagement and outreach to date. The Facility has been designed to comply with the 94-C ORES regulations § 900-2.3.



Attachment 1 Stakeholder List

**Host Community and
Representatives**

Town of De Kalb
Jordan Deleel
Town Supervisor
PO Box 133
2907 Co Rd 17
De Kalb Junction, NY
13630
315-250-5868
Tenure: 8 months

Town of De Kalb
Barb Creazzo
Town Clerk
PO Box 133
2907 Co Rd 17
De Kalb Junction, NY
13630
315-347-3331

**County Agencies and
Representatives**

St. Lawrence County
Sandra W. Santamoor
County Clerk
48 Court Street
Canton, NY 13617
315-379-2237

St. Lawrence County
Board of Legislators
William Sheridan
Board of Legislators Chair
48 Court Street
Canton, NY 13617

St. Lawrence County
Ruth A. Doyle
County Administrator
48 Court Street
Canton, NY 13617

St. Lawrence County

Renee Cole
County Treasurer
48 Court Street
Canton, NY 13617
315-379-2234

St. Lawrence County Soil
and Water Conservation
Robert Andrews Jr.
Chairperson
1942 Old DeKalb Road
Canton, NY 13617
315-386-3582

St. Lawrence County
Human Resources & Civil
Service Administration
Jonnie Dorothy
Director
48 Court Street
Canton, NY 13617
315-379-2210

St. Lawrence County Farm
Bureau
Patrick Smith
President
159 Wolf Road
Suite 300
Albany, NY 12205

Cornell Cooperative
Extension, St. Lawrence
County
Patrick Ames
Executive Director
2043B State Highway 68
Canton, NY 13617
315-379-9192

St. Lawrence County
Industrial
Development Agency
Rich Willaims
Project Manager
19 Commerce Ln #1

Canton, NY 13617
315-379-9806

State Agencies

Empire State Development
Corporation
Eric Gertler
Acting Commissioner
633 Third Avenue
Floor 37
New York, NY 10017

Empire State Development
Corporation
Steve Hunt
North Country Regional
Director
317 Washington Street
2nd Floor
Watertown, NY 13601
315-785-7907

New York State Attorney
General
Letitia James
Office of the Attorney
General
Capitol Building
Albany, NY 12224

New York State
Department of Agriculture
and Markets
Richard Ball
Commissioner
10B Airline Drive
Albany, NY 12235

New York State
Department of
Environmental
Conservation
Basil Seggos
Commissioner
625 Broadway

Albany, NY 12233

New York State
Department of
Environmental
Conservation
Randy Young
Region 6 Acting Regional
Director
207 Genesee Street
Utica, NY 13501

New York State
Department of Health
Howard Zucker
Commissioner
Corning Tower
Empire State Plaza
Albany, NY 12233

New York State
Department of Public
Service
James Denn
Public Information Officer
Agency Building 3
Empire State Plaza
Albany, NY 12223

New York State
Department of Public
Service
Tammy Mitchell
Office of Electric, Gas, and
Water
Agency Building 3
Empire State Plaza
Albany, NY 12223

New York State
Department of Public
Service
Hon. Michelle L. Phillips
Secretary
Agency Building 3
Empire State Plaza

Albany, NY 12223

New York State
Department of State
Rossana Rosado
Secretary of State
One Commerce Plaza
99 Washington Avenue
Albany, NY 12231

New York State
Department of
Transportation
Kenneth M. Bibbins
Region 7 Regional
Director
Dulles State Office
Building
317 Washington Street
Watertown, NY 13601
315-785-2333

New York State
Department of
Transportation
Hank Gutman
Commissioner
50 Wolf Road
Albany, NY 12232

New York State Division
of Homeland Security and
Emergency Services
Patrick Murphy
Commissioner
State Campus, Building 7A
Suite 710
Albany, NY 12242

New York State Energy
Research and Development
Authority
Doreen M. Harris
President and CEO
17 Columbia Circle
Albany, NY 12203

New York State Energy
Research and Development
Authority
Richard Kaufmann
Board Chairman
17 Columbia Circle
Albany, NY 12203

New York State Energy
Research and Development
Authority
Kelly Tyler
Director of Communities
and Community
Outreach
17 Columbia Circle
Albany, NY 12203

New York State Office of
Parks,
Recreation, and Historic
Preservation
Region 10 Thousand
Islands
45165 NYS Route 12
Alexandria Bay, NY 13607
315-482-2593

New York State Office of
Parks, Recreation, and
Historic Preservation
Daniel Mackay
Deputy Commissioner
625 Broadway
Albany, NY 12233

New York State Office of
Parks, Recreation, and
Historic Preservation
Facilities Management
Bureau
625 Broadway
Albany, NY 12233

New York State Siting Board
John B. Howard
Chair
Agency Building 3
Empire State Plaza
Albany, NY 12223

New York State Department of State Office of Renewable Energy Siting
Empire State Plaza
240 State Street, P-1
South, J Dock
Albany, NY 12242
518-473-4590

Development Authority of the North Country (DANC)
James Wright
Executive Director
317 Washington Street
#414
Watertown, NY 13601
315-661-3200

Federal Agencies

Federal Aviation Administration
Maria Stanco
Deputy Regional Administrator
1 Aviation Plaza
Jamaica, NY 11434

National Telecommunications and Information Administration
Charles Cooper
Office of Spectrum Management

1401 Constitution Avenue NW
Washington, DC 20230

US Army Corps of Engineers
Steven Metivier
Chief, New York Application Evaluation Section
1776 Niagara Street
Buffalo, NY 14207

US Department of Agriculture Farm Service Agency Public Affairs Staff
1400 Independence Avenue, SW
STOP 0506
Washington, DC 20250

US Department of Defense, Defense Siting Clearinghouse
Ronald Tickle
Mission Evaluation Branch
3400 Defense Pentagon
Room 5C646
Washington, DC 20341

US Fish and Wildlife Service
David Stilwell
Field Supervisor
3817 Luker Road
Cortland, NY 13045
607-753-9334

Highway Departments

St. Lawrence County Department of Highways
Donald R. Chambers
Superintendent of Highways

44 Park Street
Canton, NY 13617
315-379-1542

Town of De Kalb
Wayne Holland
Town Highway Supervisor
De Kalb Junction, NY 13630
315-771-4767

Schools

Canton Central School District
Robert Burke
Superintendent of Schools
99 State Street
Canton, NY 13617
315-386-856, ext 4202

Gouverneur Central School District
Lauren French
Superintendent of Schools
133 East Barney Street
Gouverneur, NY 13642
315-287-4870
french.lauren@gcask12.org

Potsdam Central School District
Joann Chambers
Superintendent of Schools
29 Leroy Street
Potsdam, NY 13676
315-265-2000 ext 733
jchambers@potsdam.k12.ny.us

Emergency Responders

St. Lawrence County
Emergency Services
Matthew Denner

Director/Fire Coordinator
48 Court Street
Canton, NY 13617
315-379-2240

De Kalb Junction Fire
Department
Josh Fry
Fire Chief
4324 US Highway 11
De Kalb Junction, NY
13630
315-347-2298

New York State Police
Troop B
Major Ruben A. Oliver
Troop Commander
1097 State Route 86
Box 100
Ray Brook, NY 12977
518-897-2000

St. Lawrence County
Police
Brooks J. Bigwarfe
St. Lawrence County
Sheriff
48 Court Street
Building #8
Canton, NY 13617
315-379-2222

Utilities

National Grid
P.O. Box 11742
Newark, NJ 07101

New York State
Independent System
Operator
10 Krey Boulevard
Rensselaer, NY 12144

New York Power Authority
(NYPA)
Corporate
Communications
123 Mail Street
Mail Stop 10 B
White Plains, NY
10601914-581-6200

Public Interest Groups

Town of De Kalb
Historical Association
Bryan Thompson
Historian
68 Streeter Road
De Kalb Junction, NY
13630
315-347-1900

The Nature Conservancy
David Klein
Senior Field
Representative
4245 North Fairfax Drive
Suite 100
Arlington, VA 22203

Adirondack North Country
Association
Kate Fish
Executive Director
67 Main Street
Suite 201
Saranac Lake, NY 12983
518-891-6200
kfish@adirondack.org

Great Lakes Seaway Trail
Inc.
Michael Bristol
President/CEO
401 W Main Street
Glen Park, NY 13601
315-646-1000
travel@seawaytrail.com

IBEW Local Union 910
John O-Driscoll
Business Manager
25001 Water Street
Watertown, NY 13601
315-782-5630

Airports and Heliports

Ogdensburg International
Airport
5900 State Highway 812
Ogdensburg, NY 13669
315-869-2676

Potsdam Municipal Airport
Brad Clements
Manager
2 Park Street - Civic
Center
PO Box 5168
Potsdam, NY 13676
315-265-7480

Repositories, Libraries and Newspapers

Gouverneur Public Library
Greta Schrader
Director
60 Church Street
Gouverneur, NY 13642
315-287-0191

Richville Free Library
Deborah Lee
Manager
87 Main Street
PO Box 42
Richville, NY 13681
315-287-1481

The Gouverneur Tribune
Press
74 Trinity Ave

Gouverneur, NY 13642
315-287-2100
gouvtribunepress@gmail.com

North Country Now
PO Box 975
4 Clarkson Ave
Potsdam, NY 13676
315-265-1000
thisweek@northcountrynow.com

**Legislative
Representatives**

US Senate
Kirsten Gillibrand
Senator
100 South Clinton Street
Room 1470
Syracuse, NY 13261
315-448-0470

US Senate
Charles Schumer
Senator
100 South Clinton Street
Room 841
Syracuse, NY 13261
315-423-5471

Governor of New York
State Kathy Hochul
Governor
NYS State Capitol
Building Albany, NY
12224

New York State Assembly
Ken Blankenbush
District 117
40 Franklin Street

Suite 2
Carthage, NY 13619
315-493-3909

State Senate
Simcha Eichenstein
District 48
LOB 519
Albany, NY 12248
518-455-5721

US House of
Representatives
Elise Stefanik
Representative, 21st
Congressional District
318 Cannon House Office
Building Washington, DC
20515
202-225-4611

Adjacent Municipalities

Village of Richville
Ella Mae Fenlong
Mayor
PO Box 285
Richville, NY 13681
315-287-0956

Village of Richville
Shelly Prashaw
Clerk and Tax Collector
PO Box 285
Richville, NY 13681
315-261-9498

Town of Hermon
Cathy Race
Town Supervisor
109 Church Street
Hermon, NY 13652
315-347-3606

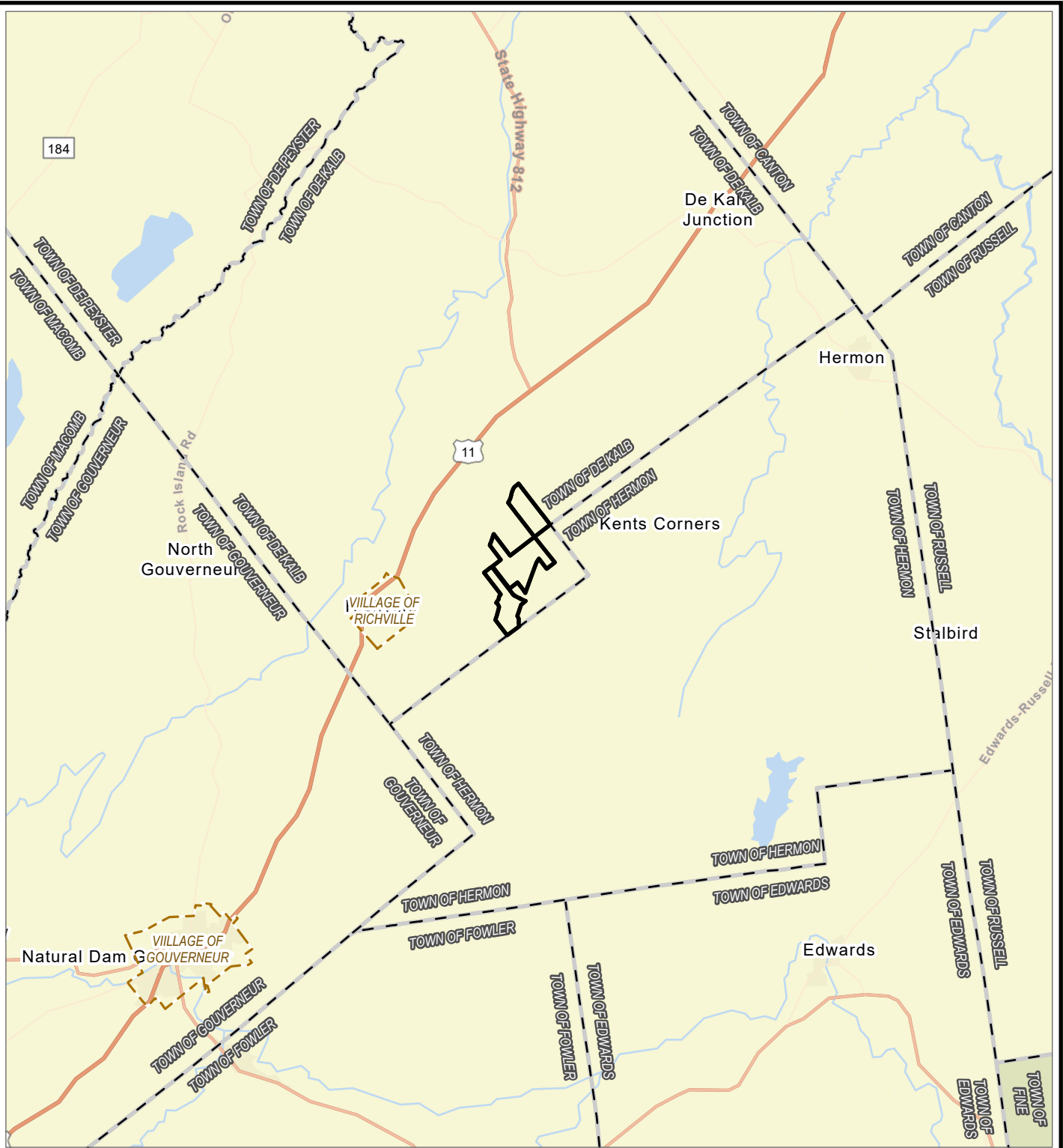
Town of Hermon
Karen Wayering

Town Clerk
109 Church Street
Hermon, NY 13652 315-
347-3606



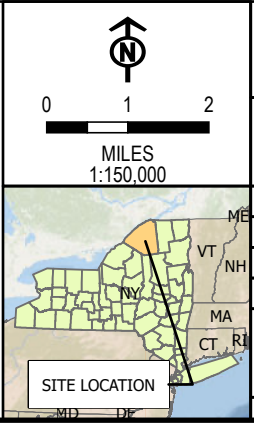
Figure 1: Regional Location Map

COORDINATE SYSTEM: NAD 1983 UTM ZONE 17N; MAP ROTATION: 0
 - SAVED BY: J.FREDENBURG ON 7/27/2021, 16:32:20 PM; FILE PATH: T:\1-PROJECTS\BORREGOMOSS_RIDGE2\APRX\MOSS_RIDGE_CEP_FIG1_REGIONAL_LOCATION_MAP_20210727.APRX; LAYOUT NAME: 8.5X11P_INSET



PROJECT AREA
TOWN BOUNDARY
VILLAGE BOUNDARY

BASE MAP: ESRI
 DATA SOURCES: TRC




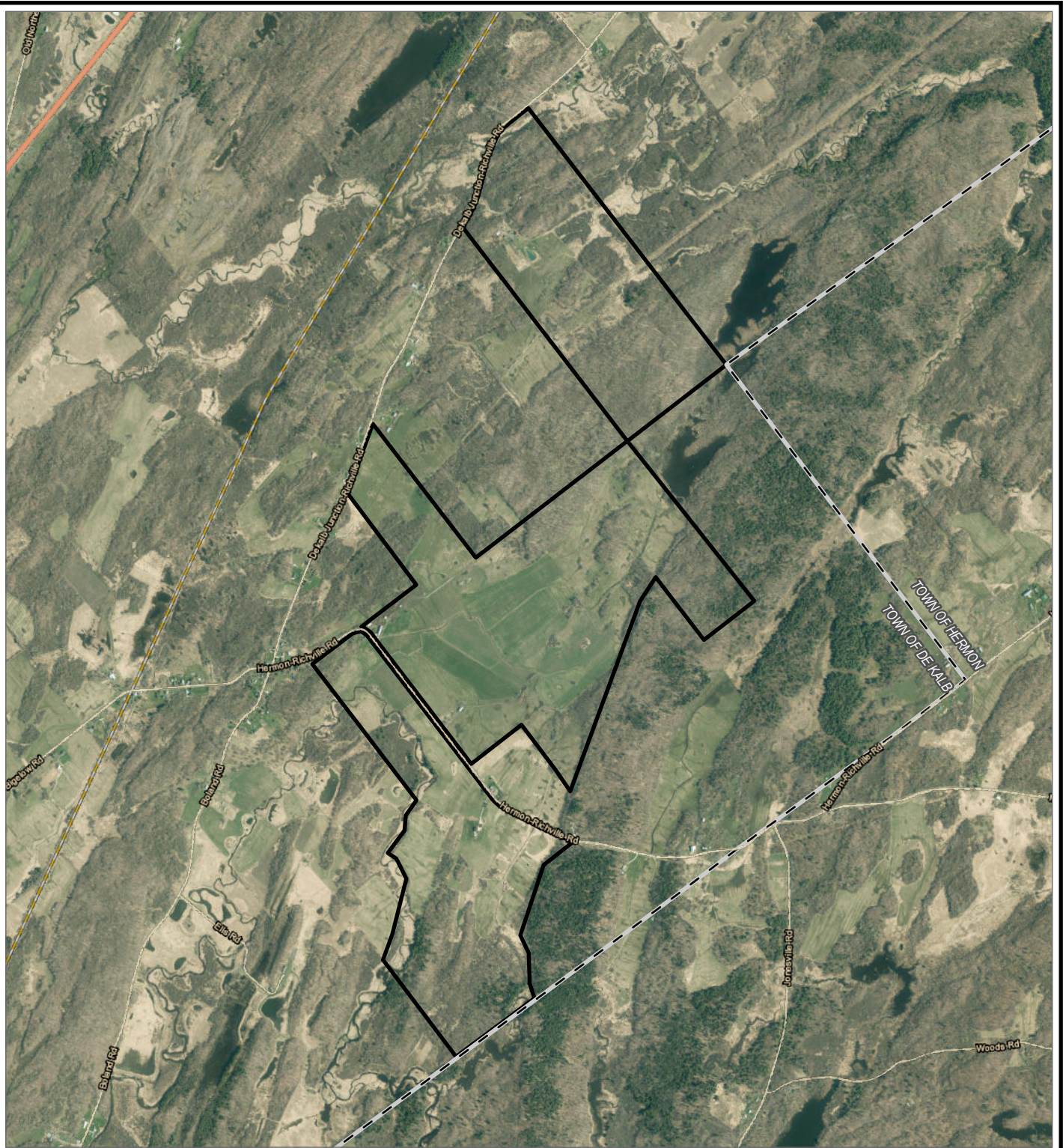


PROJECT: MOSS RIDGE SOLAR	
TOWN OF DE KALB ST. LAWRENCE COUNTY, NY	
TITLE: REGIONAL LOCATION MAP	
DRAWN BY: J. FREDENBURG	PROJ. NO.: 407700.0PPL.MOS1
CHECKED BY: R. BARBER	FIGURE 1
APPROVED BY: T. KONDAK	
DATE: JULY 2021	
	
6 ASHLEY DRIVE 1ST FLOOR SCARBOROUGH, ME 04074 PHONE: 207.879.1930	
FILE: MOSS_RIDGE_CEP_FIG1_REGIONAL_LOCATION_MAP_20210727	

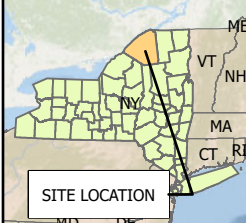
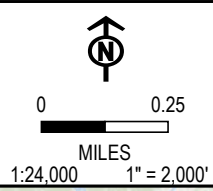



Figure 2: Project Area

COORDINATE SYSTEM: NAD 1983 UTM ZONE 17N; MAP ROTATION: 0
 - SAVED BY: J.FREDENBURG ON 7/27/2021, 16:33:57 PM; FILE PATH: T:\1-PROJECTS\BORREGOMOSS_RIDGE2-APRX\MOSS_RIDGE_CEP_FIG2_PROJECT_AREA_20210727.APRX; LAYOUT NAME: 8.5X11P_INSET



-  PROJECT AREA
-  TOWN BOUNDARY



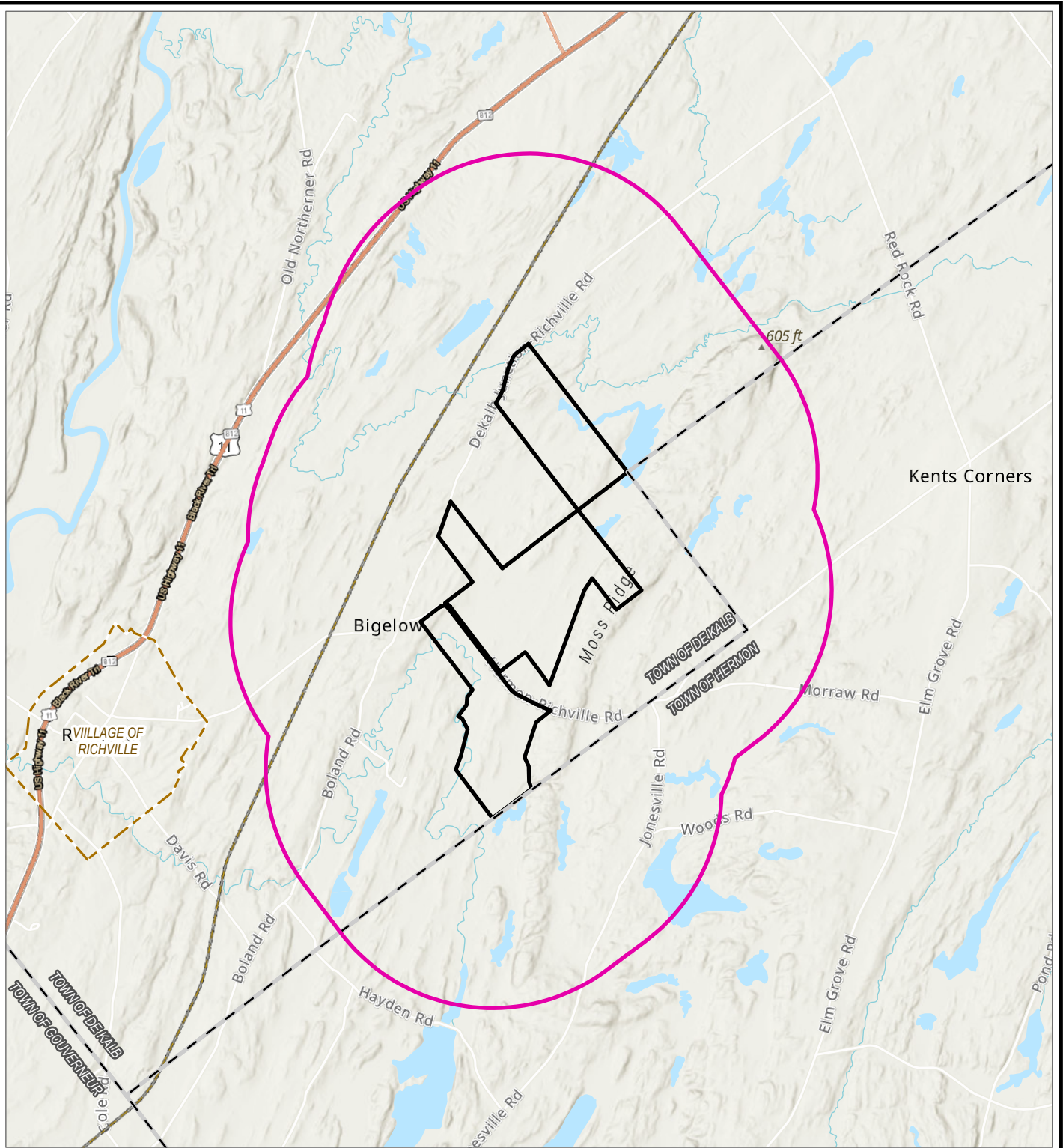
PROJECT: MOSS RIDGE SOLAR	
TOWN OF DE KALB ST. LAWRENCE COUNTY, NY	
TITLE: PROJECT AREA	
DRAWN BY: J. FREDENBURG	PROJ. NO.: 407700.0PPL.MOS1
CHECKED BY: R. BARBER	FIGURE 2
APPROVED BY: T. KONDAK	
DATE: JULY 2021	
	
6 ASHLEY DRIVE 1ST FLOOR SCARBOROUGH, ME 04074 PHONE: 207.879.1930	
FILE:	MOSS_RIDGE_CEP_FIG2_PROJECT_AREA_20210727

BASE MAP: ESRI
 DATA SOURCES: TRC



Figure 3: Study Area

COORDINATE SYSTEM: NAD 1983 UTM ZONE 17N; MAP ROTATION: 0
 -- SAVED BY: J.FREDEBURG ON 7/27/2021, 16:35:23 PM; FILE PATH: T:\1-PROJECTS\BORREGOMOSS_RIDGE\2-APRX\MOSS_RIDGE_CEP_FIG3_STUDY_AREA_20210727.APRX; LAYOUT NAME: 8.5X11P - INSET



PROJECT AREA
STUDY AREA
VILLAGE BOUNDARY
TOWN BOUNDARY

BASE MAP: ESRI
 DATA SOURCES: TRC

0 0.5
 MILES
 1:48,000 1" = 4,000'

SITE LOCATION

PROJECT: **MOSS RIDGE SOLAR**
TOWN OF DE KALB
ST. LAWRENCE COUNTY, NY

TITLE: **STUDY AREA**

DRAWN BY: J. FREDENBURG	PROJ. NO.: 407700.0PPL.MOS1
CHECKED BY: R. BARBER	FIGURE 3
APPROVED BY: T. KONDAK	
DATE: JULY 2021	

TRC

6 ASHLEY DRIVE
 1ST FLOOR
 SCARBOROUGH, ME 04074
 PHONE: 207.879.1930

FILE: MOSS_RIDGE_CEP_FIG3_STUDY_AREA_20210727