

Changes in Water Chemistry in Adirondack Lakes and Streams: A Status Report

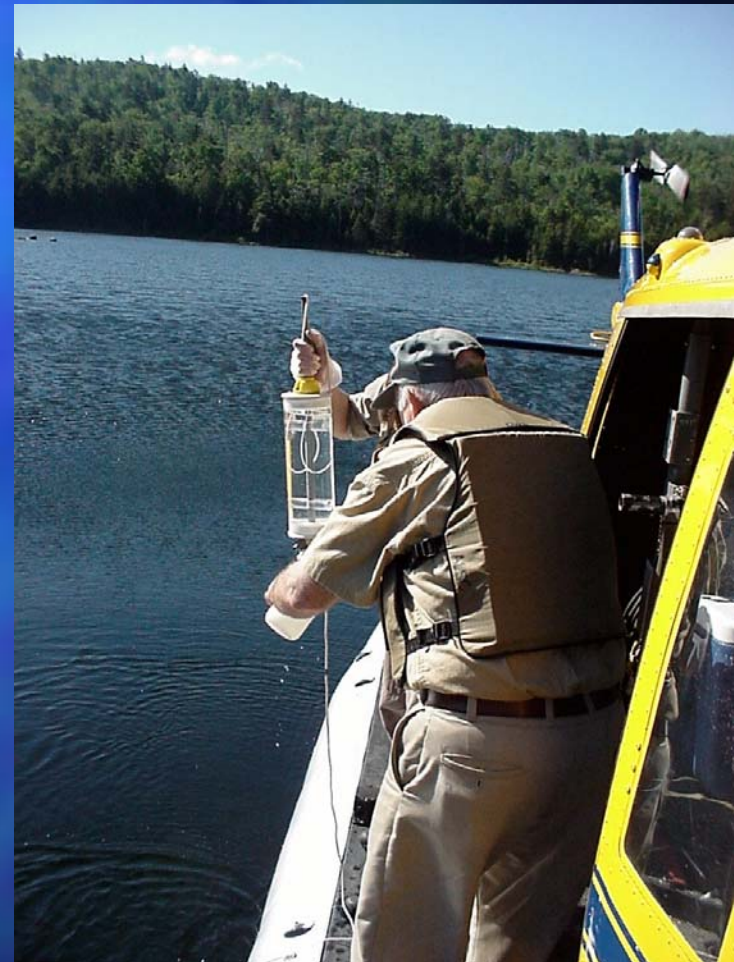
K.M. Roy, NYS DEC
Adirondack Lakes Survey Corporation

NYSERDA Environmental Monitoring, Evaluation, &
Protection

October 7-8, 2003
Albany, NY

1984-1987

- Physical, biological and chemical surveys on 1469 waters.
- Extent of lake acidification.
- 1990 Interpretive Report.



LTM Lake Classification

(Hydrology, Flowpath, Chemistry, Watershed Characteristics)

- Thick Till/Carbonate 5 lakes
- Medium Till 13 lakes
- Thin Till 27 lakes
- Mounded Seepage 7 lakes

TOTAL 52 lakes



ALSC Long Term Monitoring Program 1992_ - present

*52 lakes, 33 streams

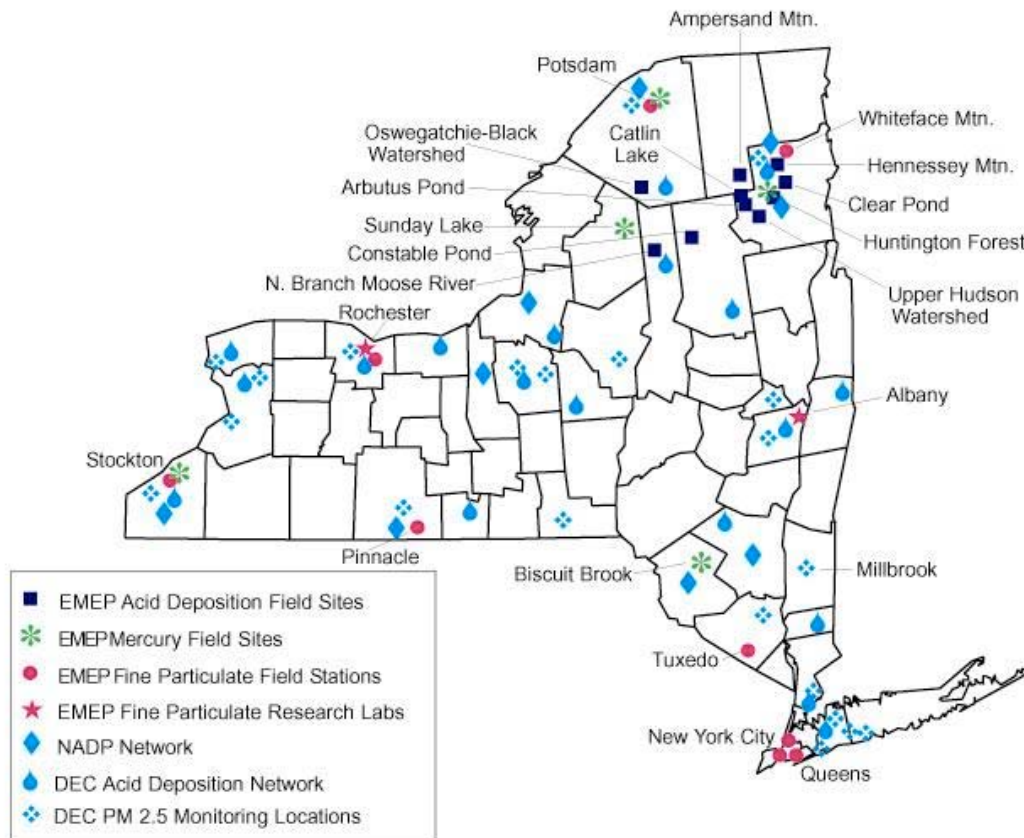
*summer survey w/EPA over the Northeastern US

*peer review and outreach

evaluate the effectiveness of the CAAA of 1990



NYSERDA's EMEP Field and Stations Research Sites



ALSC scientific associates

C.T. Driscoll, K. Driscoll, Syracuse University

G.B. Lawrence, D. Burns, U.S. Geological Survey

M.J. Mitchell, SUNY ESF

G. Sistla, DE C DAR Air Research

H. Simonin, DEC Habitat Unit, Rome

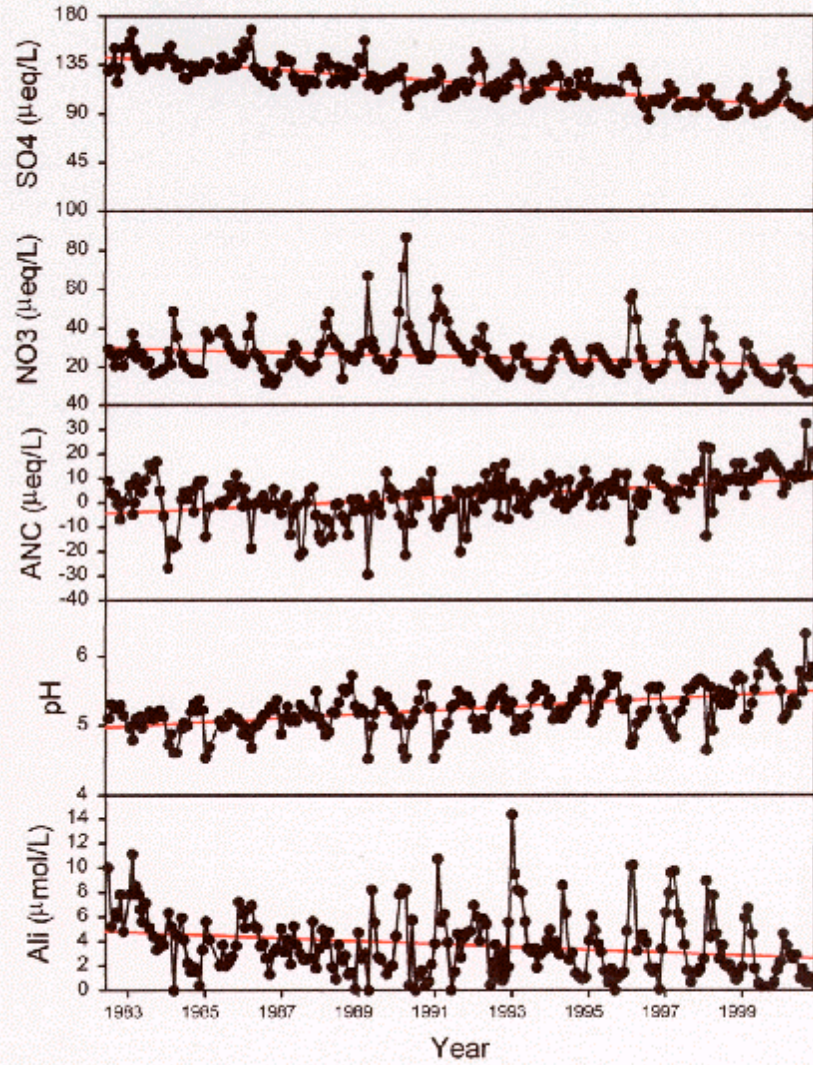
S. Paulsen, J. Stoddard, US EPA, Corvallis

M. Watson, J. Joseph, NYSERDA

G. Lovett, C. Canham, Inst. Ecosystem Studies



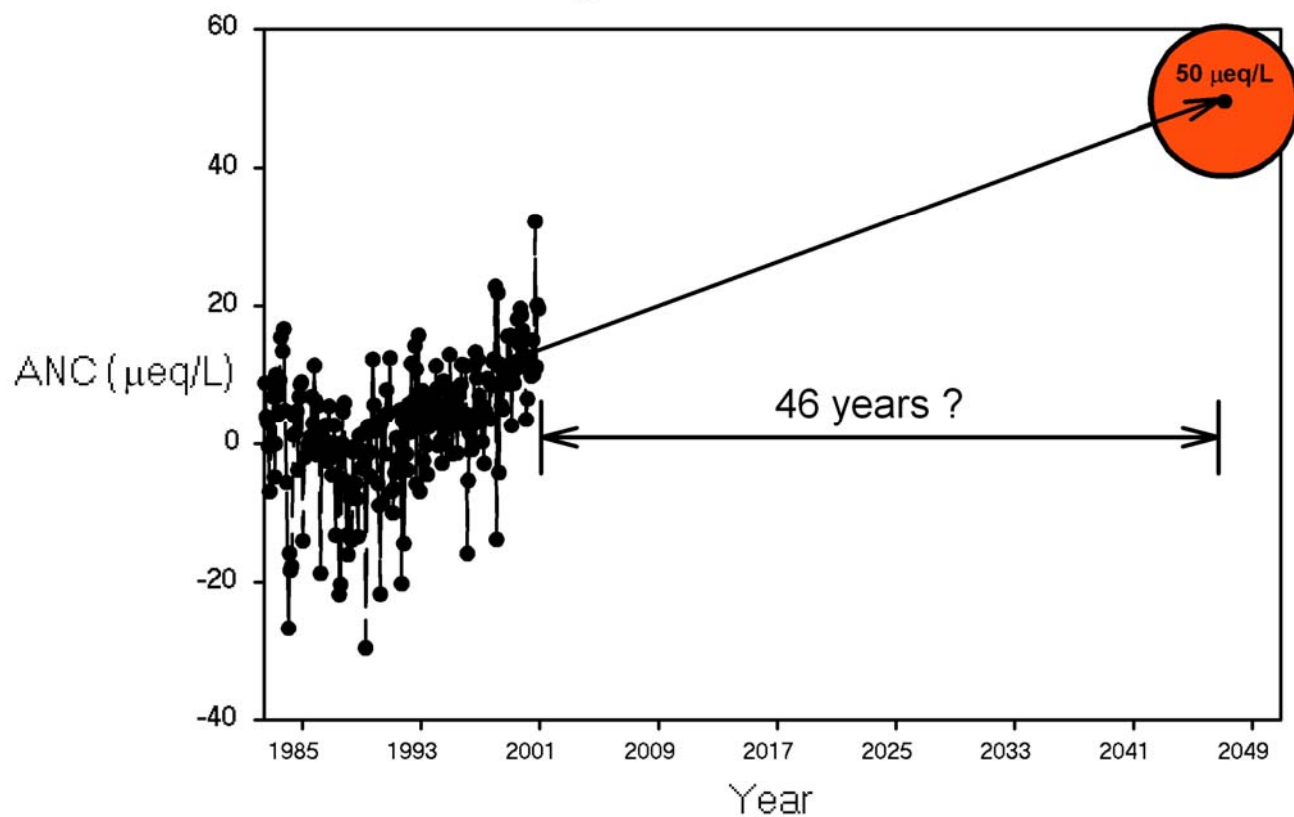
Big Moose Lake

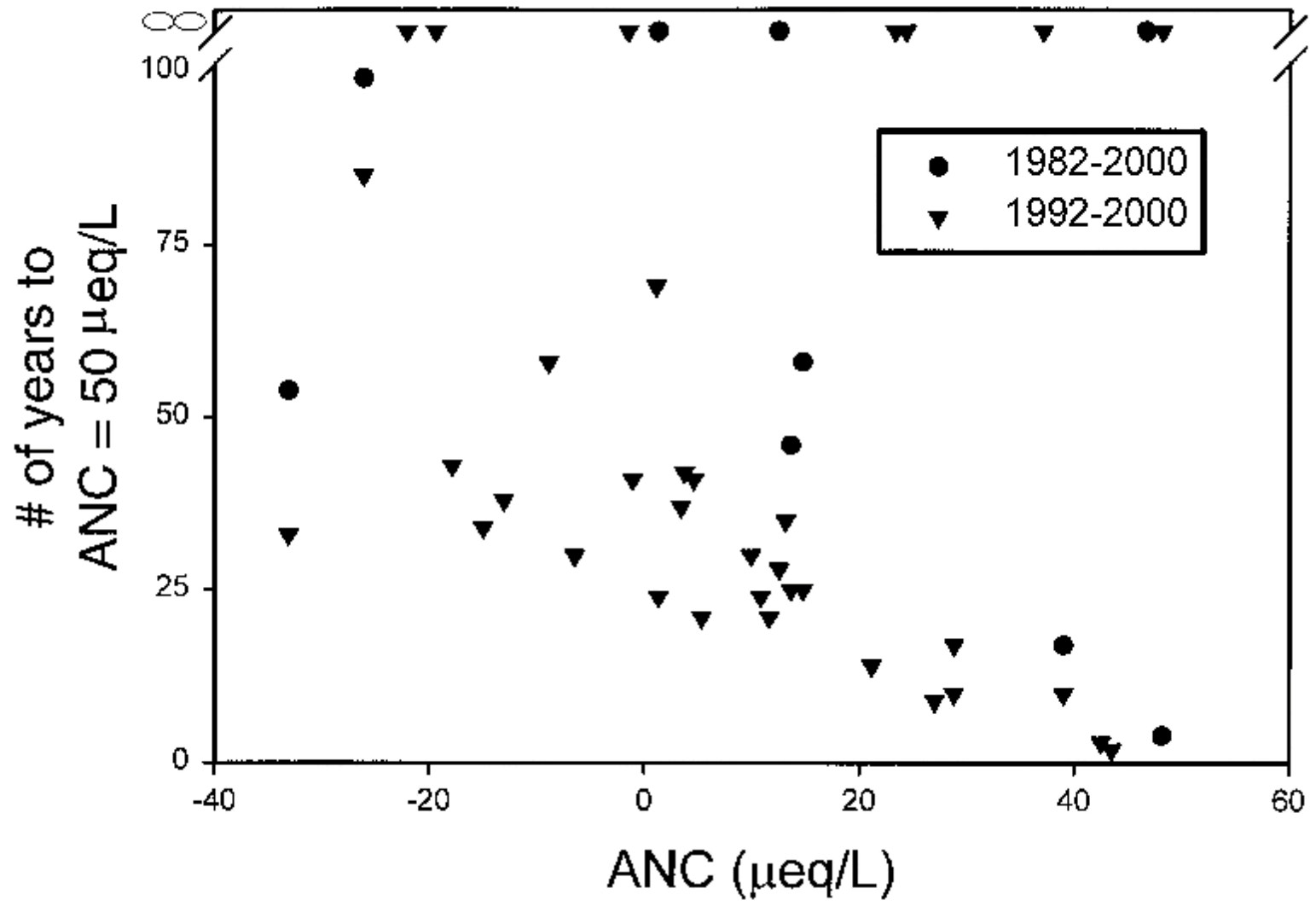


1992-2000 Results in 48 Lakes

- Extensive improvement in SO_4
- Varied improvement in NO_3
- Improved ANC in 29 lakes
- Decreased toxic Al in 28 lakes
- Improved pH in 18 lakes,
2 lakes declining

Big Moose Lake





Remember...

- Trend data do not show lake recovery is complete, only that it is starting.
- The rate of lake chemistry improvement is slow.
- Current levels of pH, ANC and Al still critical in many lakes.

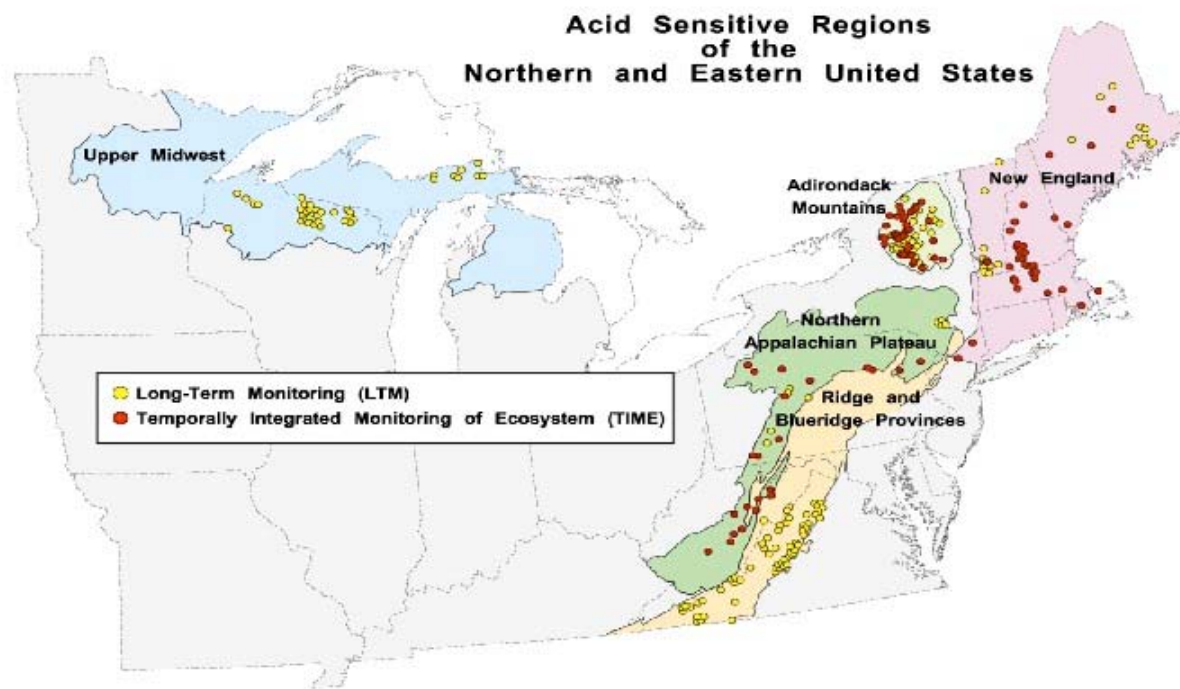
Fisheries Survey Comparisons 1984-2003

Changes in Species Richness For 35 Waters With Repeat Surveys

- Increased Richness 17
- No Change 14
- Decreased Richness 4



EPA LTM/TIME Surveys

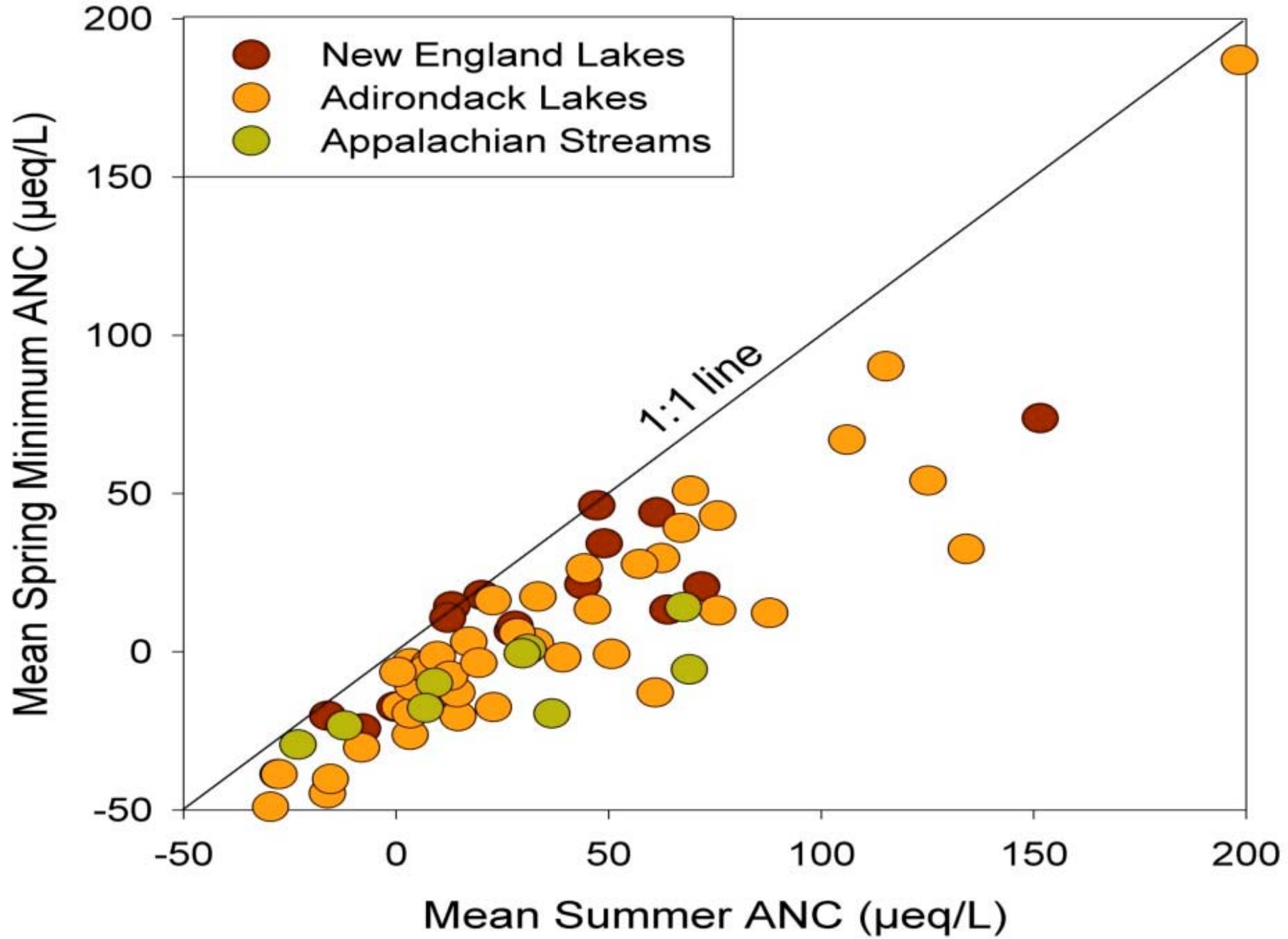


Press release:

Eight percent of lakes in the Adirondack are currently acidic, down from 13 percent in the early 1990s.

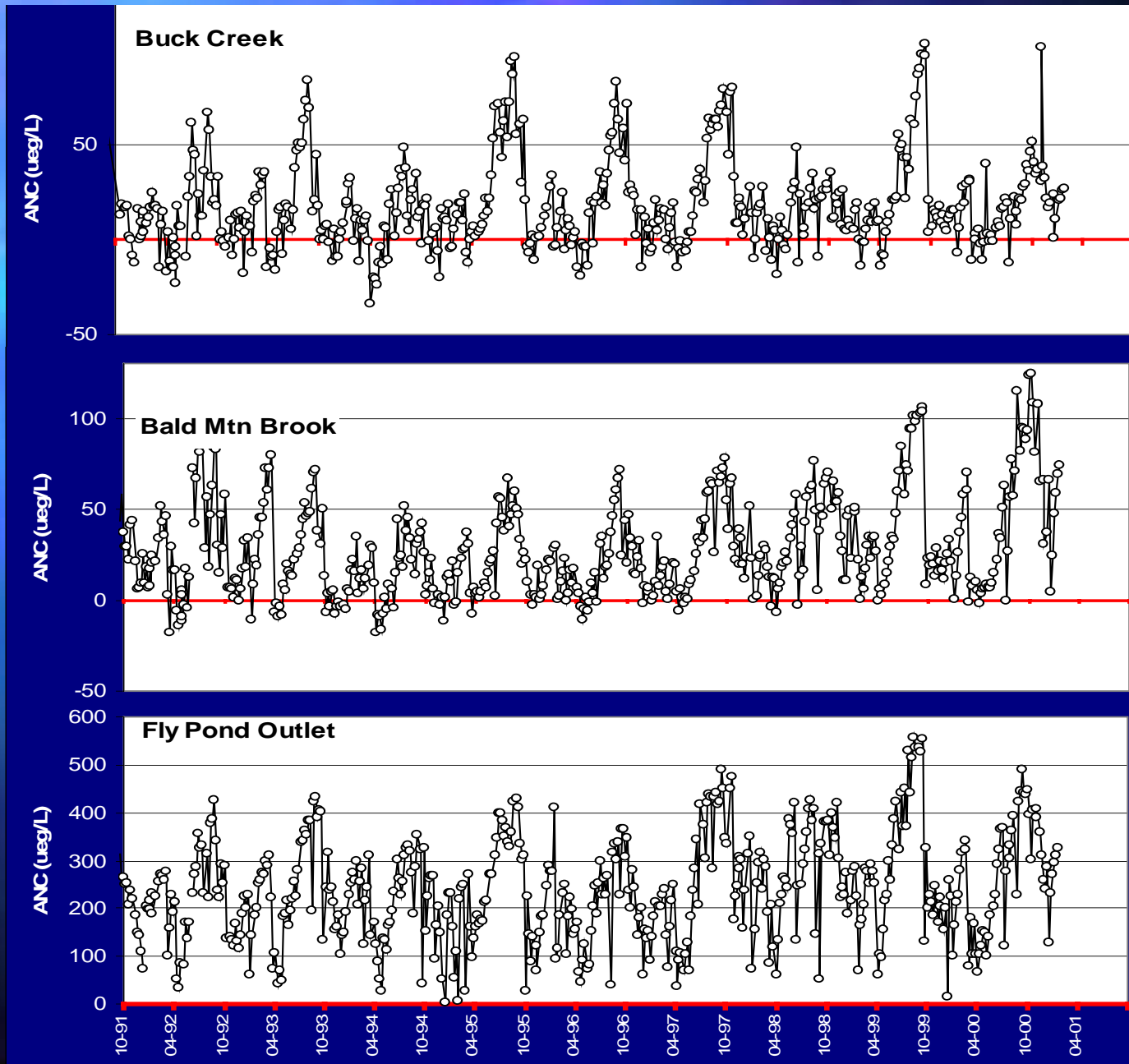
CONFUSION about terms and survey size

- 'Acidic' lake defined as $ANC < 0$.
- Adirondack lake population defined as lakes with surface areas > 10 acres, or 1,290 lakes total.
- Sample sites = 43 lakes, summer.



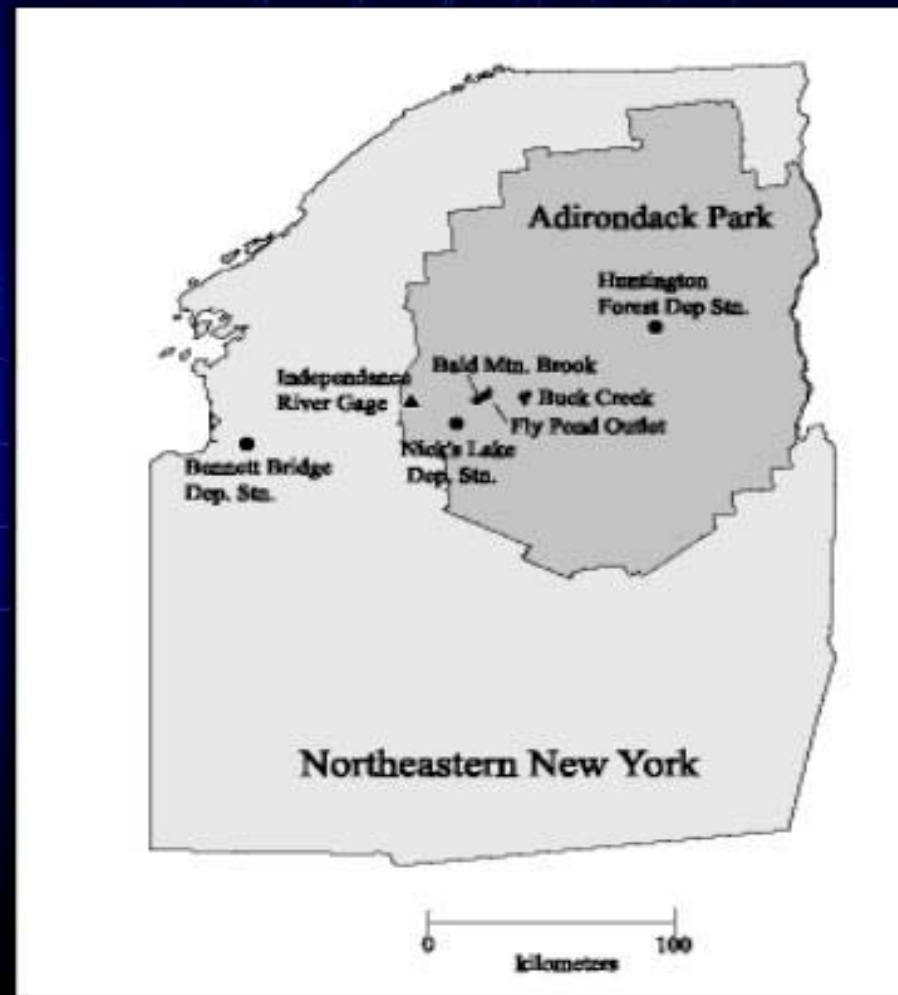


Streams 1991-2001 Acid Neutralizing Capacity

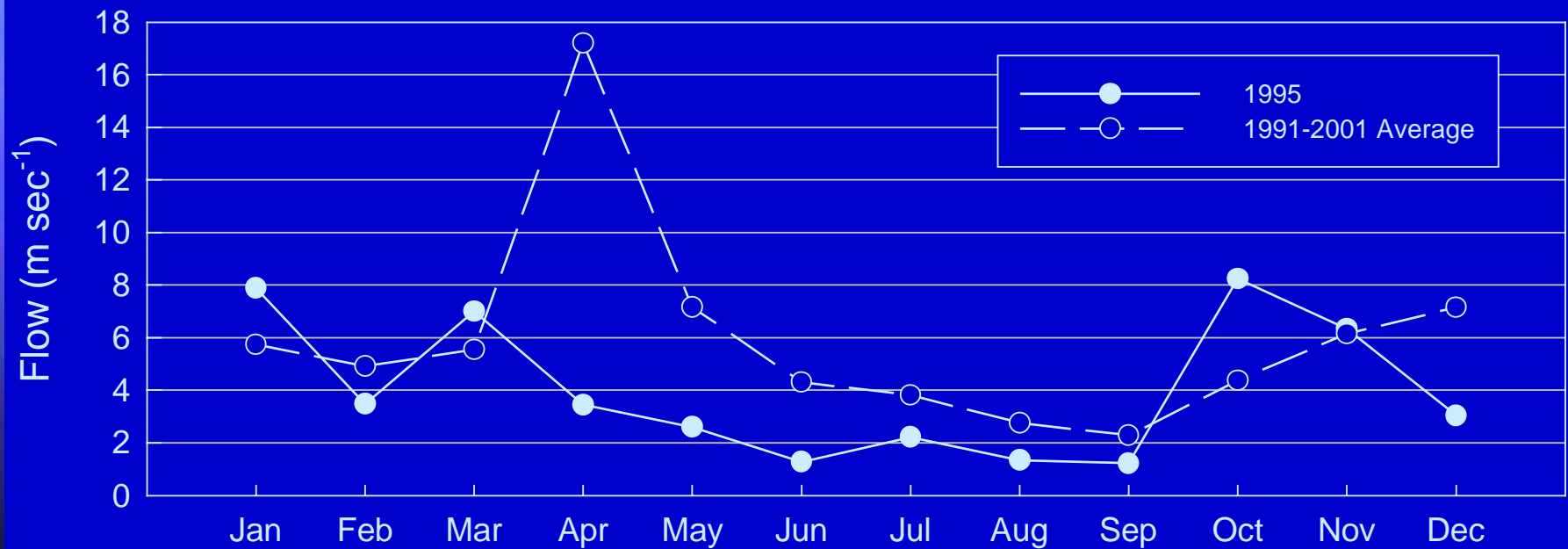




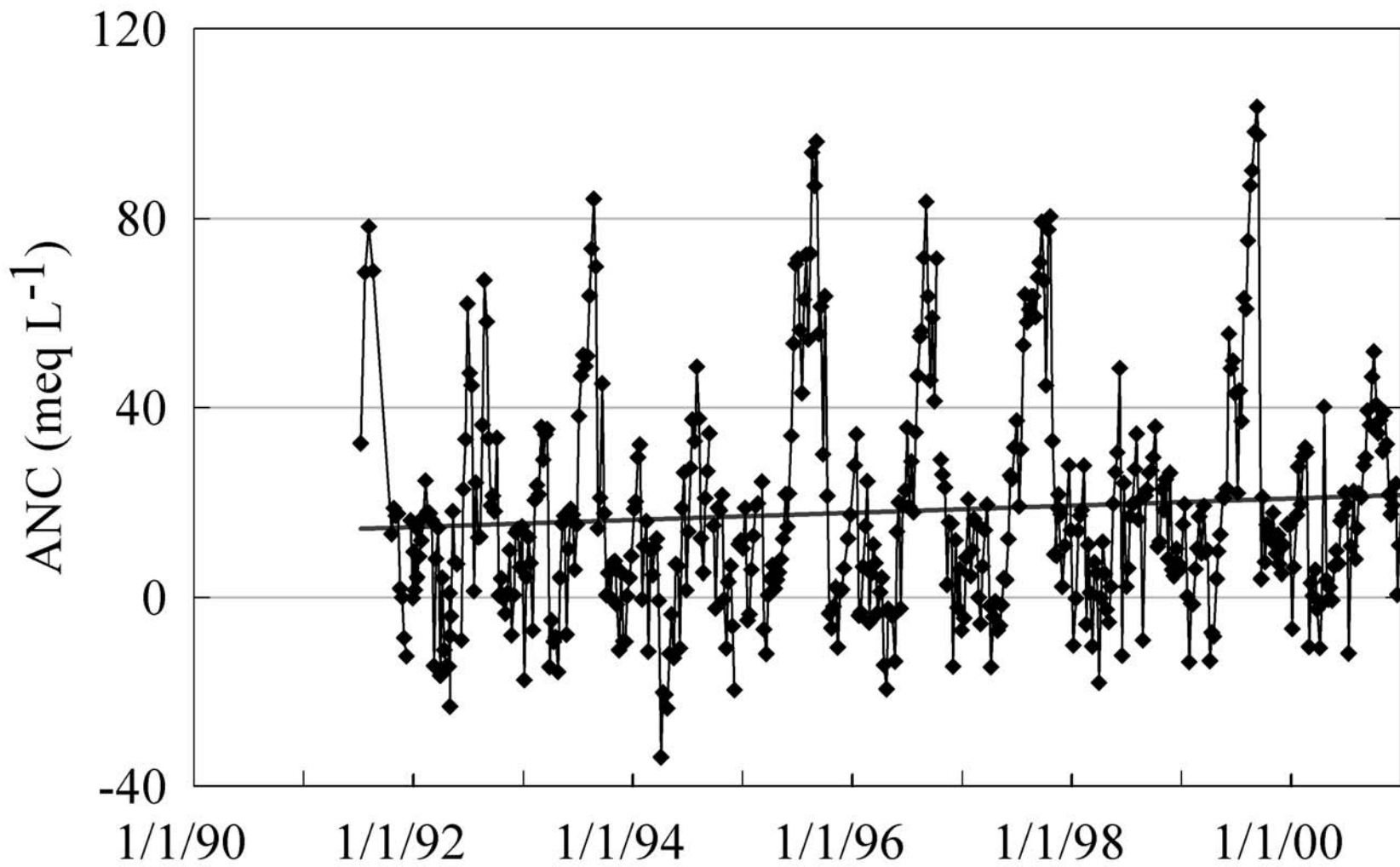
- Stream and Flow Gage Locations
- NADP Deposition Sites



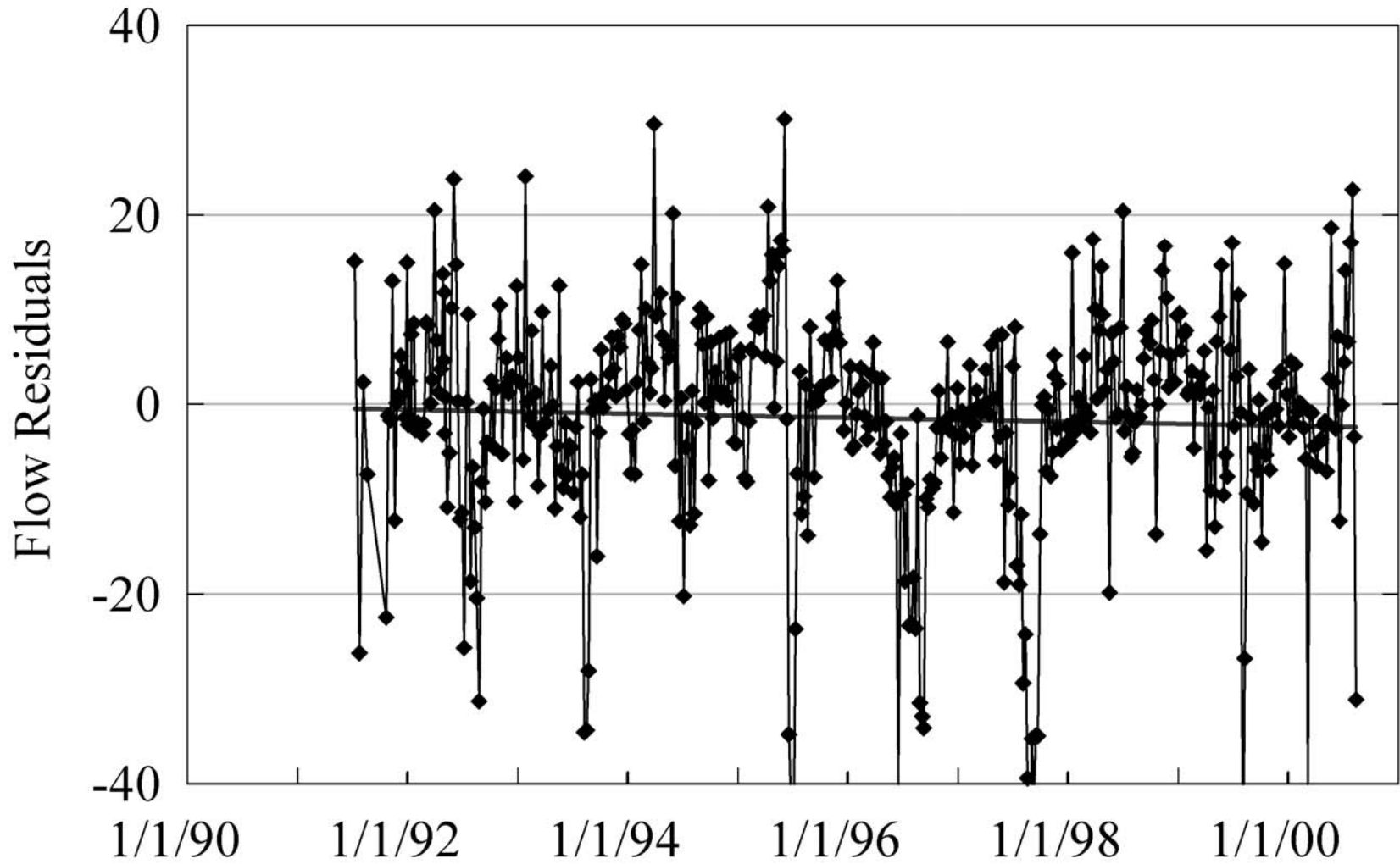
Independence River Flow 1991-2001



Buck Creek



Buck Creek



EPA Clean Air Markets Division

■ ALSC website

■ State of
Science
Report

