

## Energy and Fuel Markets Summary

- ❑ Market influences include:
  - Global factors such as the Iran war, Russian-Ukraine war, world petroleum demand, U.S. trade policies, and associated geopolitical uncertainties.
  - Domestic factors include global energy market pricing, U.S. economic policy and the seasonal transition from spring to summer.
- ❑ Summary of spot prices for market benchmarks (see Page 2):
  - WTI and Brent crude spot prices both decreased compared to the prior week.
  - Propane (Mt. Belvieu) spot prices increased while natural gas (Henry Hub) decreased compared to the prior week.
- ❑ Regional fuel inventories compared to the previous week (see Pages 2 through 4):
  - Natural gas, propane, and total gasoline inventories increased while ultra-low sulfur diesel (ULSD) remained relatively consistent compared to the prior week.
- ❑ Highlights of production and imports/exports observations and comparisons to the previous week (see page 3):
  - U.S. refining capacity and utilization is above the 90% mark while East Coast is just above the 80% threshold.
  - Crude oil and petroleum products imports for March are below year ago levels while exports are above year ago levels.
- ❑ New York retail prices for heating and transportation fuels (see Pages 5 and 6):
  - Heating oil and propane prices decreased while and kerosene remained similar since the prior survey, with only +/- 1% change. (5/26/2026)
  - NY Transportation fuels retail prices were comparable with the prior week, with only +/- 1% change.
- ❑ New York State weather outlook and seasonal conditions summary (see Pages 7 and 8)
  - The National Oceanic and Atmospheric Administration (NOAA) forecasts indicate likely to leaning above normal temperatures for the 6-10 and 8-14 day periods.
  - The NOAA forecasts for precipitation indicate leaning below normal for the 6-10 day and near normal for the 8-14 day period.

## Issue Contents and Quick Links:

<a href="#">National Market Benchmarks and East Region Natural Gas Inventories</a>	Page 2
<a href="#">National Crude Inventories, Refining, and PADD1 Petroleum Products Movement</a>	Page 3
<a href="#">PADD1B Regional Liquid Fuels Inventories</a>	Page 4
<a href="#">New York State Transportation Fuel Prices Summary</a>	Page 5
<a href="#">New York State Heating Fuel Prices Summary</a>	Page 6
<a href="#">Weather Outlook</a>	Page 7
<a href="#">Degree Days Outlook and Summary</a>	Page 8
<a href="#">References</a>	Page 9

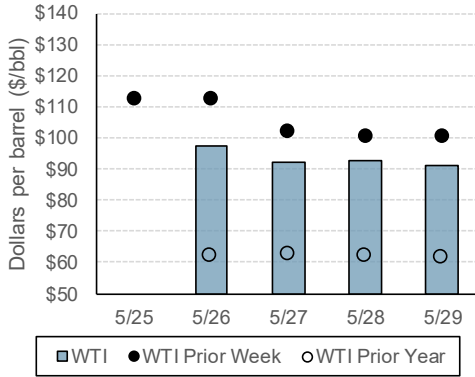
### Notes:

1. Data and information presented are from a variety of sources, see references section for detailed citations. Visualizations by NYSERDA unless otherwise noted.
2. Data represent the most recent week ending on Fridays, unless otherwise noted. See individual graphics and summaries for details.

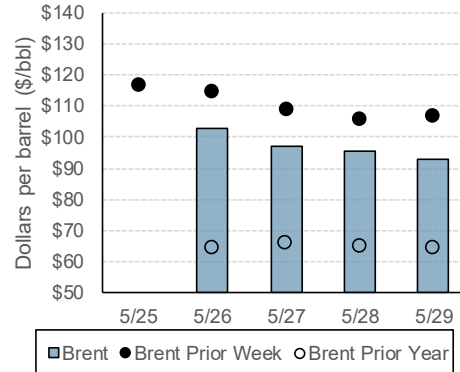
## National Benchmarks and East Region Natural Gas Inventories

### National Spot Price Benchmarks

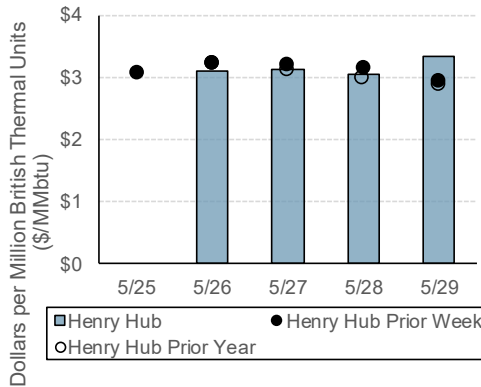
WTI Crude Oil Spot Prices Summary



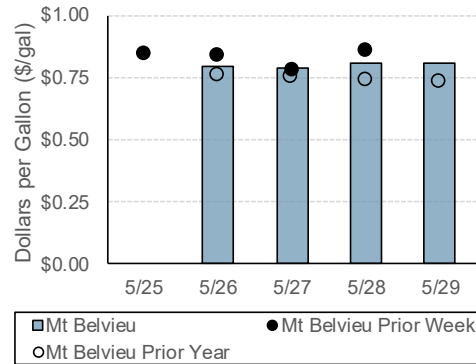
Brent Crude Oil Spot Prices Summary



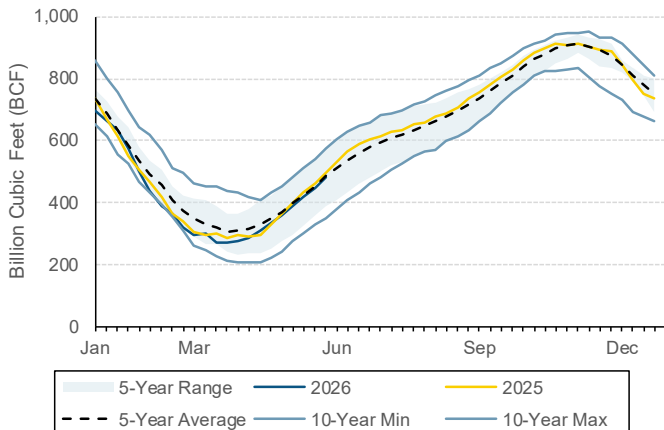
Natural Gas Henry Hub Spot Prices Summary



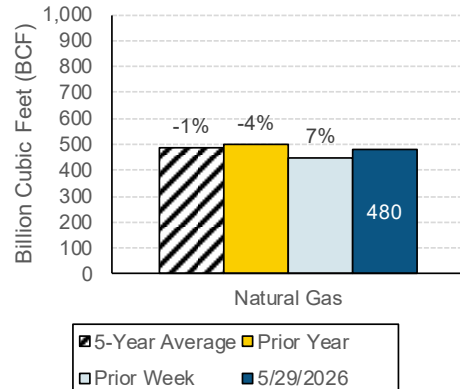
Propane Mt. Belvieu Spot Prices Summary



### East Region: Natural Gas Working Underground Storage



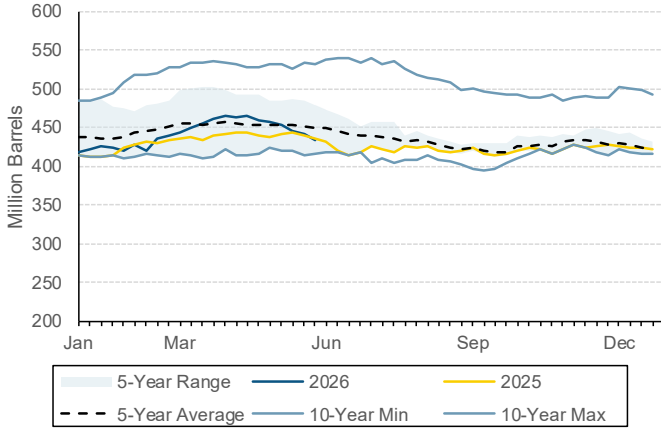
Historical Comparison



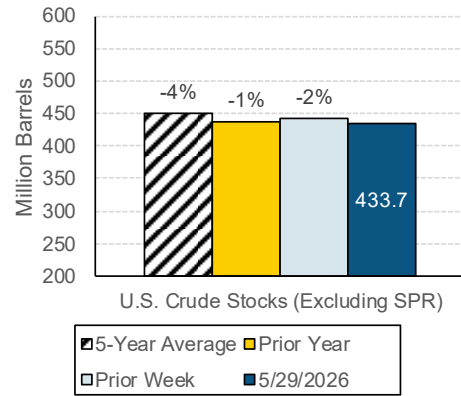
- Notes:**
1. Data from USEIA, see references section for detailed citations. Visualizations by NYSERDA.
  2. Graphics summarize available USEIA data from the most recent week ending on Fridays.
  3. Historical comparison bar chart percentages reflect current week. Positive values indicate current week is greater, negative values indicate current week is less than the historical value.
  4. Comparable dates are used to represent prior year data points. Some current and prior year data points will be unavailable on market holidays.

## National Crude Inventories, Refining, and PADD1 Petroleum Product Movement

### National Crude Inventory (Excluding Strategic Petroleum Reserve [SPR])

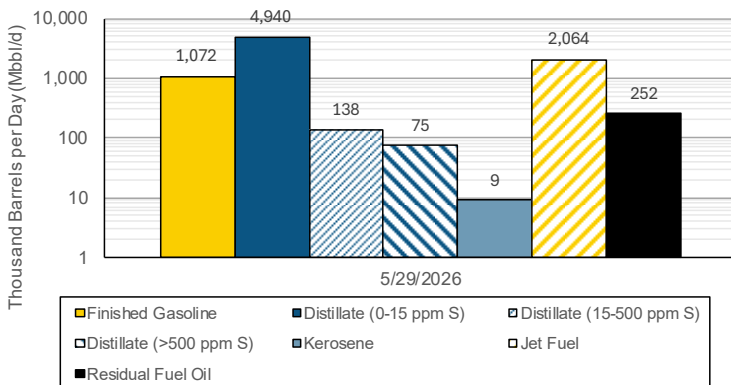


### Historical Comparison

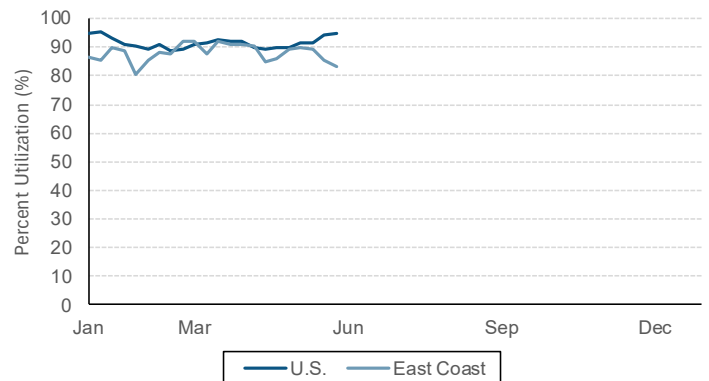


### National Refinery Production and Utilization

#### U.S. Refiner Net Production

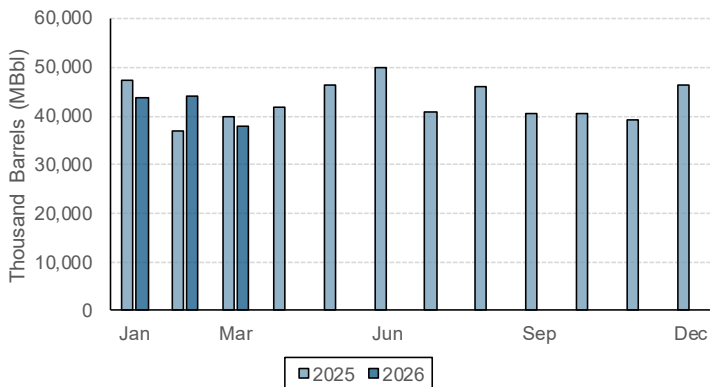


#### Refinery Capacity Utilization: 2026

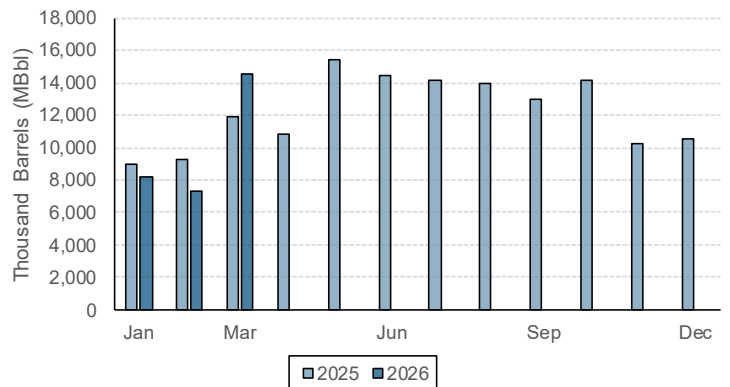


### PADD1 (East Coast) Petroleum Product Movement: Imports and Exports Summary

#### PADD1 Imports: Crude Oil and Petroleum Products



#### PADD1 Exports: Crude Oil and Petroleum Products

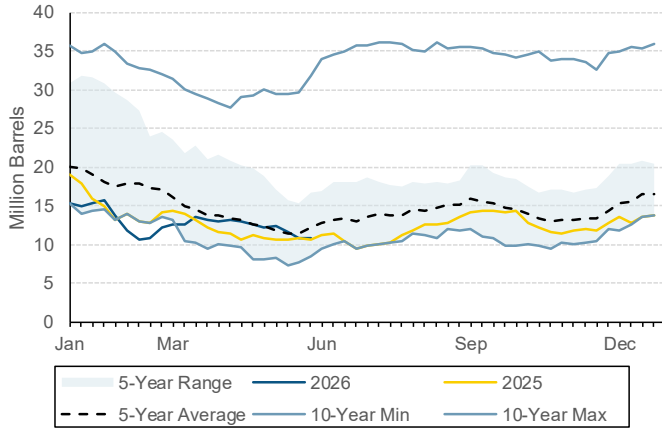


#### Notes:

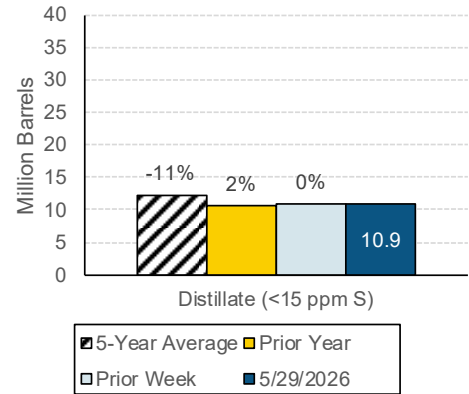
1. Data from USEIA, see references section for detailed citations. Visualizations by NYSERDA.
2. Imports and Exports datasets are monthly and have a 2-month data lag.
3. Historical comparison bar chart percentages reflect current week. Positive values indicate current week is greater, negative values indicate current week is less than the historical value.

## PADD1B Regional Liquid Fuels Inventories

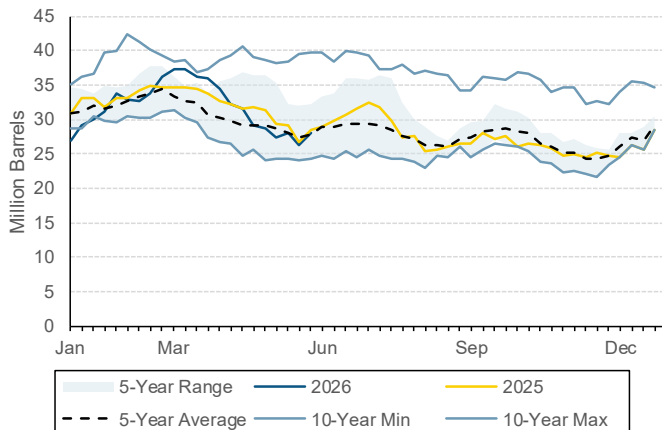
### Distillate Fuel Oil (0 – 15 ppm Sulfur)



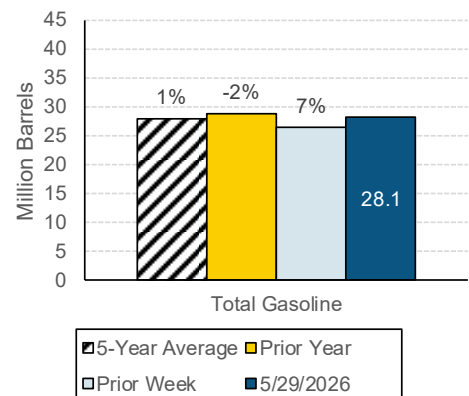
### Historical Comparison



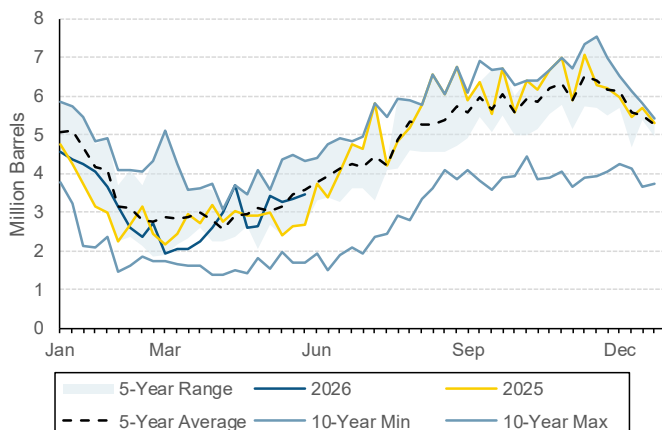
### Total Gasoline



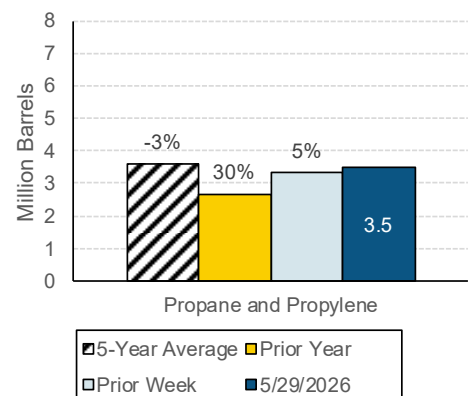
### Historical Comparison



### Propane and Propylene



### Historical Comparison

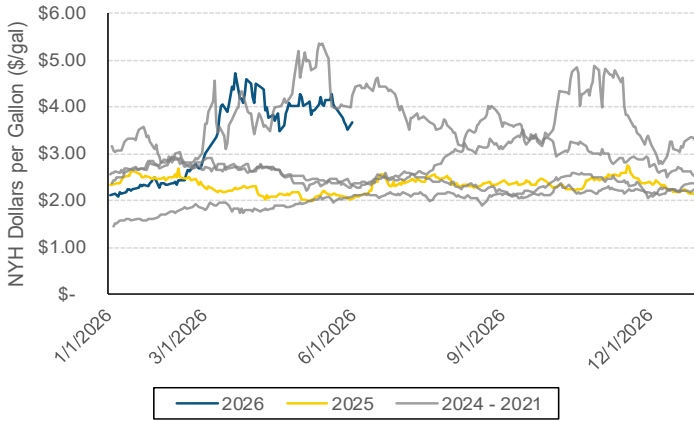


#### Notes:

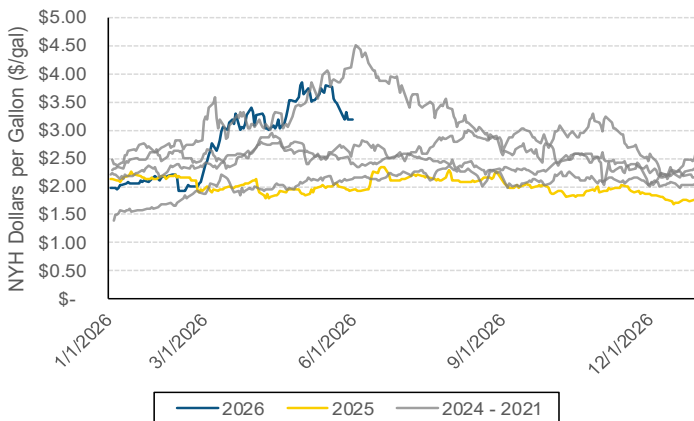
1. Data from USEIA, see references section for detailed citations. Visualizations by NYSERDA.
2. Historical comparison bar chart percentages reflect current week. Positive values indicate current week is greater, negative values indicate current week is less than the historical value.

## Transportation Fuel Prices Summary

### Ultra-low Sulfur Diesel New York Harbor Spot Prices<sup>1</sup>



### Conventional Gasoline (Regular) New York Harbor Spot Prices<sup>1</sup>



Visit the following NYSERDA online resource for regional New York State retail price summaries for transportation:

[Weekly Transportation Fuels Dashboard](#)

Transportation fuel average prices from New York Harbor are daily datapoints on business days. Weekends and holiday market prices are not presented.

Average retail prices presented in the table below reflect a statewide weekly average price.

### New York State Retail Prices

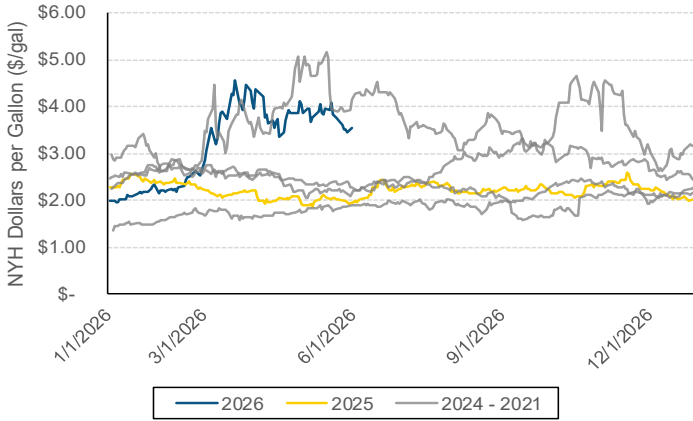
Fuel Type	5/29/2026	5/22/2026	% Difference	Prior Year	% Difference
Regular Gasoline (dollars per gallon) <sup>2</sup>	\$4.580	\$4.610	-0.6%	\$3.126	46.5%
On-road Diesel (dollars per gallon) <sup>2</sup>	\$5.905	\$5.937	-0.5%	\$3.874	52.4%

**Notes:**

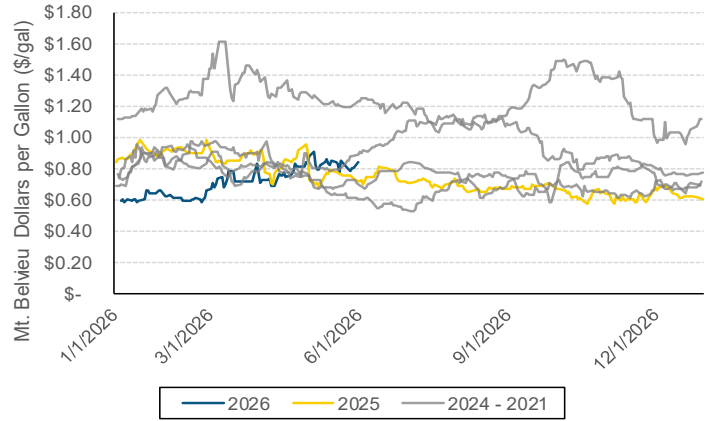
1. Wholesale New York Harbor prices from USEIA, see references section for detailed citation. Visualizations by NYSERDA.
2. Retail price data from AAA, see references section for detailed citation. Visualization by NYSERDA.

## Heating Fuel Prices Summary

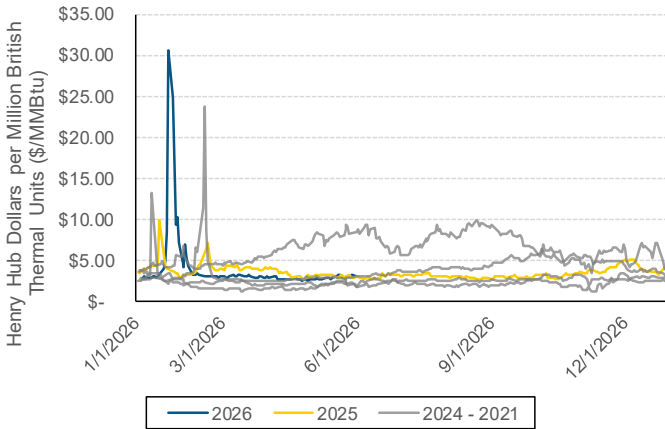
**No. 2 Heating Oil: New York Harbor Spot Prices<sup>1</sup>**



**Propane: Mt. Belvieu Spot Prices<sup>1</sup>**



**Natural Gas: Henry Hub Spot Prices<sup>1</sup>**



Visit the following NYSERDA online resources for regional New York State retail price summaries for heating fuels:

[Heating Oil Prices and Dashboard](#)

[Kerosene Prices and Dashboard](#)

[Propane Prices and Dashboard](#)

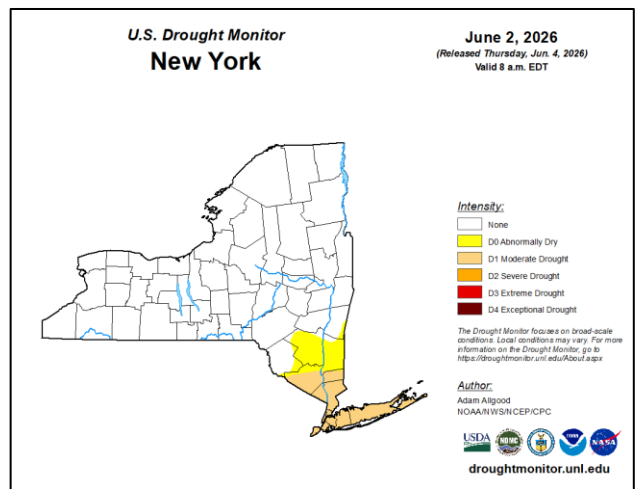
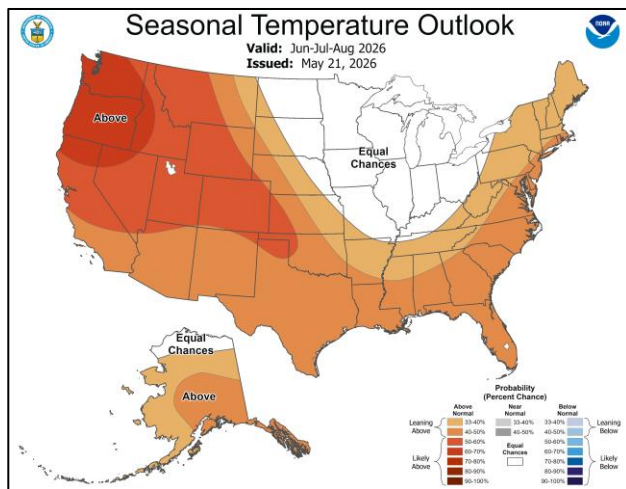
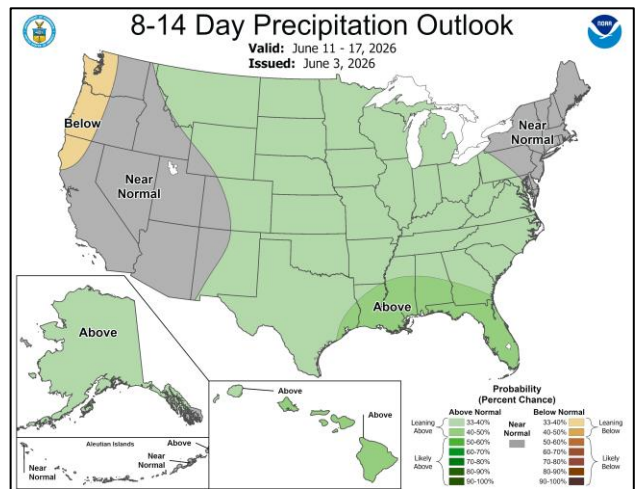
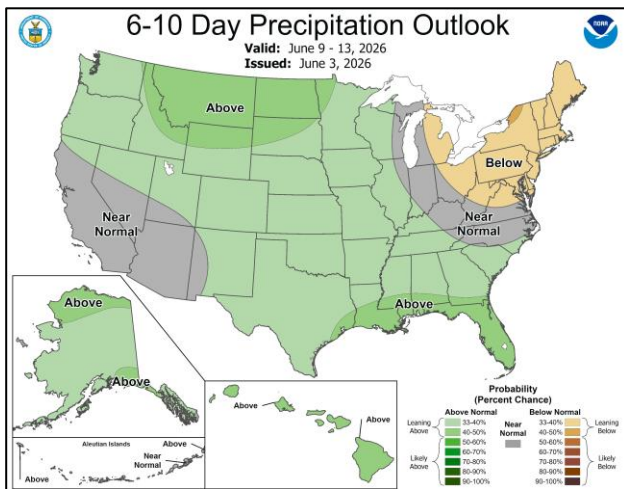
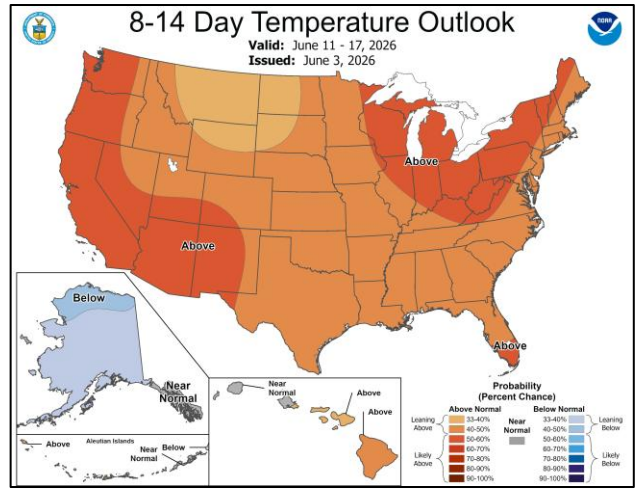
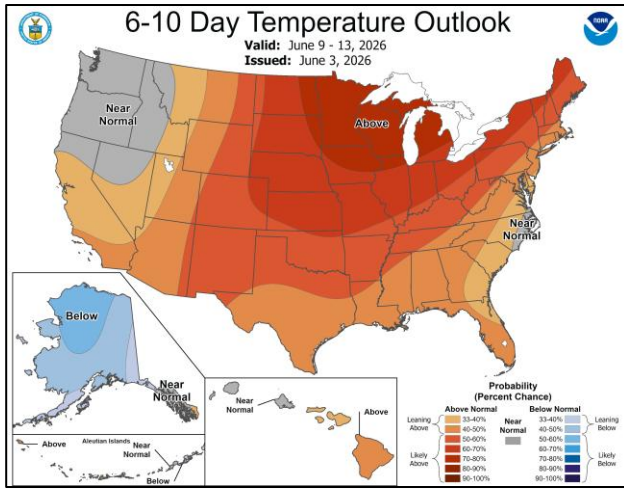
Heating fuels retail price summaries are part of the USEIA State Heating Oil and Propane Program/NYSERDA Heating Fuel Prices surveys.

## New York State Retail Prices

USEIA and NYSERDA Liquid Products Survey	5/26/2026	5/11/2026	% Difference	Prior Year	% Difference
Ultra-low #2 Heating Oil Posted Credit Prices (dollars per gallon) <sup>2</sup>	\$5.330	\$5.397	-1.3%	\$3.573	49.1%
Propane Posted Credit Prices - 1,100 gallon usage (dollars per gallon) <sup>2</sup>	\$3.167	\$3.265	-3.0%	\$3.272	-3.2%
Kerosene Posted Credit Prices (dollars per gallon) <sup>2</sup>	\$5.893	\$5.925	-0.5%	\$4.501	30.9%
<b>Monthly USEIA Reporting</b>	<b>February 2026</b>	<b>January 2025</b>	<b>% Difference</b>	<b>February 2025</b>	<b>% Difference</b>
Monthly Average Residential Natural Gas Prices (dollars per Therm) <sup>3</sup>	\$1.590	\$1.550	2.6%	\$1.404	13.2%

- Notes:
1. Wholesale prices data are from USEIA, see references section for detailed citation. Visualizations by NYSERDA.
  2. Retail price data from USEIA and NYSERDA, see references section for detailed citation. Visualization by NYSERDA. Highlighted cells indicate price correction.

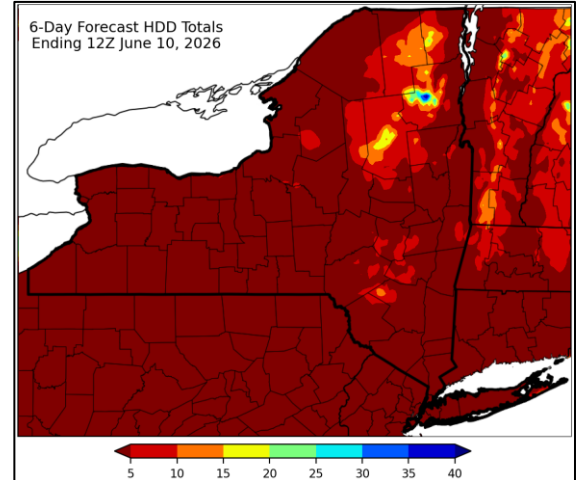
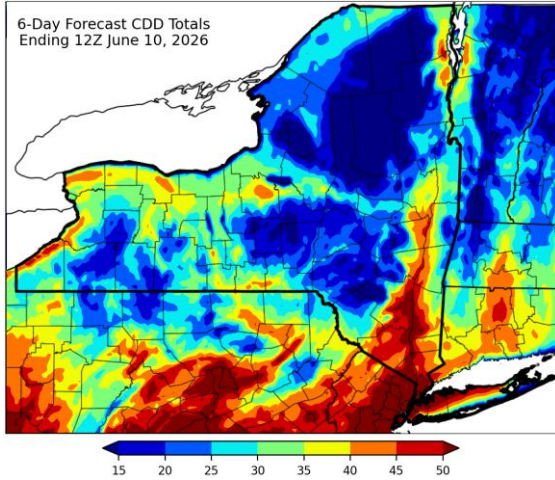
## Weather Outlook and Seasonal Threat Monitoring



- Notes:
1. Temperature, precipitation, and tropical outlook graphics from NOAA. See references section for detailed citations.
  2. Drought monitoring for New York State from National Drought Mitigation Center. See references section for detailed citation.

## Degree Days Outlook and Summary

### New York State Degree Day Forecast



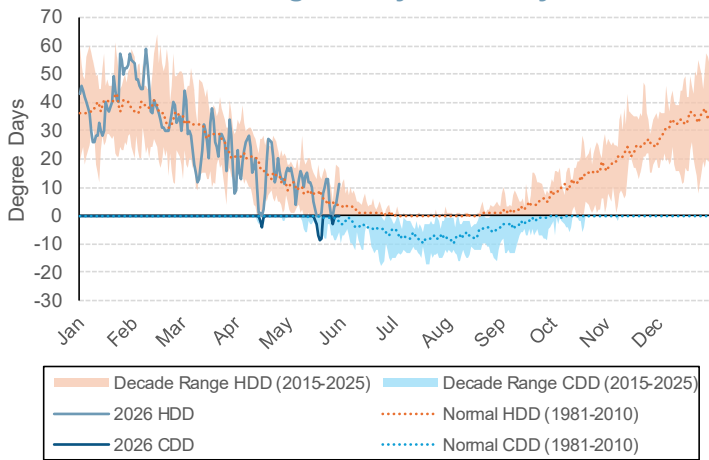
City	6-Day CDD Forecast	Normal	% Difference
Albany	41	19	116%
Binghamton	22	10	120%
Buffalo	30	14	114%
Glens Falls	28	10	180%
Massena	27	10	170%
NYC	62	37	68%
Rochester	36	17	112%
Syracuse	37	16	131%
Watertown	22	8	175%

Forecast Dates:  
06/04/2026 - 06/09/2026

City	6-Day HDD Forecast	Normal	% Difference
Albany	0	13	-100%
Binghamton	0	27	-100%
Buffalo	0	17	-100%
Glens Falls	0	24	-100%
Massena	0	26	-100%
NYC	0	4	-100%
Rochester	0	16	-100%
Syracuse	0	18	-100%
Watertown	0	30	-100%

Forecast Dates:  
06/04/2026 - 06/09/2026

### New York State Degree Day Summary: Current Year



Notes:

1. Heating degree day (HDD) forecast from NOAA and Northeast Regional Climate Center at Cornell University (NRCC). See references section for detailed citations.
2. HDD and cooling degree day (CDD) data from NOAA. Positive values represent HDD and negative values represent CDD. See references section for detailed citation. Visualizations by NYSERDA.

**Visit the following NYSERDA online resource for regional New York State degree day data along with additional information:**

[Weather Data](#)

## References

### **Fuel Inventories, Refining, and Import/Export**

U.S. Energy Information Administration (USEIA). 2026. Petroleum & Other Liquids. “Refinery Utilization and Capacity: East Coast.”. [https://www.eia.gov/dnav/pet/pet\\_pnp\\_unc\\_dcu\\_rec\\_m.htm](https://www.eia.gov/dnav/pet/pet_pnp_unc_dcu_rec_m.htm).

USEIA. 2026. Petroleum & Other Liquids. “Refinery Utilization and Capacity: U.S.”. [https://www.eia.gov/dnav/pet/pet\\_pnp\\_unc\\_dcu\\_nus\\_m.htm](https://www.eia.gov/dnav/pet/pet_pnp_unc_dcu_nus_m.htm).

USEIA. 2026. Petroleum & Other Liquids. “Weekly Imports & Exports: East Coast (PADD1)”. [https://www.eia.gov/dnav/pet/xls/PET\\_MOVE\\_WKLY\\_DC\\_R10-Z00\\_MBBLPD\\_W.xls](https://www.eia.gov/dnav/pet/xls/PET_MOVE_WKLY_DC_R10-Z00_MBBLPD_W.xls).

USEIA. 2026. Petroleum & Other Liquids. “Weekly Stocks: PADD1B”. [https://www.eia.gov/dnav/pet/xls/PET\\_STOC\\_WSTK\\_DCU\\_R1Y\\_W.xls](https://www.eia.gov/dnav/pet/xls/PET_STOC_WSTK_DCU_R1Y_W.xls).

U.S. Energy Information Administration (USEIA). 2026. Petroleum & Other Liquids. “Weekly Stocks: U.S.”. [https://www.eia.gov/dnav/pet/xls/PET\\_STOC\\_WSTK\\_DCU\\_NUS\\_W.xls](https://www.eia.gov/dnav/pet/xls/PET_STOC_WSTK_DCU_NUS_W.xls).

USEIA. 2026. Natural Gas. “Weekly Working Gas in Underground Storage”. [https://www.eia.gov/dnav/ng/xls/NG\\_STOR\\_WKLY\\_S1\\_W.xls](https://www.eia.gov/dnav/ng/xls/NG_STOR_WKLY_S1_W.xls).

### **Fuel Prices**

AAA. 2026. National and State Fuel Prices. <https://gasprices.aaa.com/>.

USEIA. 2026. Natural Gas. “Natural Gas Spot and Futures Prices (NYMEX)”. [https://www.eia.gov/dnav/ng/ng\\_pri\\_fut\\_s1\\_d.htm](https://www.eia.gov/dnav/ng/ng_pri_fut_s1_d.htm).

USEIA. 2026. Petroleum & Other Liquids. “Heating Oil and Propane Update”. <https://www.eia.gov/petroleum/heatingoilpropane/>.

USEIA. 2026. Petroleum & Other Liquids. “Spot Prices: Daily”. [https://www.eia.gov/dnav/pet/pet\\_pri\\_spt\\_s1\\_d.htm](https://www.eia.gov/dnav/pet/pet_pri_spt_s1_d.htm).

### **Weather Outlook and Data**

National Oceanic and Atmospheric Administration (NOAA). 2026. National Hurricane Center. <https://www.nhc.noaa.gov/gtwo.php?basin=atlc&fdays=2>.

NOAA. National Weather Service Climate Prediction Center. <https://www.cpc.ncep.noaa.gov/>.

NOAA. 2026. National Weather Service Climate Prediction Center. “Degree Day Statistics”. [https://www.cpc.ncep.noaa.gov/products/analysis\\_monitoring/cdus/degree\\_days/](https://www.cpc.ncep.noaa.gov/products/analysis_monitoring/cdus/degree_days/).

Northeast Regional Climate Center (NRCC). Analyses for Industry. “Weekly HDD and CDD Summary for New York”. <https://www.nrcc.cornell.edu/industry/hdd/>.

National Drought Mitigation Center. State Drought Monitor: New York. <https://droughtmonitor.unl.edu/CurrentMap/StateDroughtMonitor.aspx?NY>.

*Note that there may be slight differences between source reporting and the summaries presented in this report due to methodological differences.*

*Developed weekly by the NYSERDA Energy Markets team, part of the Policy, Analysis, and Research group. For questions, please reach out to:*

Nicole Kerrison, Program Manager, [Nicole.Kerrison@nyserda.ny.gov](mailto:Nicole.Kerrison@nyserda.ny.gov)

Brad Leach, Senior Advisor, [Brad.Leach@nyserda.ny.gov](mailto:Brad.Leach@nyserda.ny.gov)

Joseph Osso, Jr., Senior Analyst, [Joseph.Osso@nyserda.ny.gov](mailto:Joseph.Osso@nyserda.ny.gov)