

Energy and Fuel Markets Summary

- ❑ Market influences include:
 - Global factors such as the Iran war, Russian-Ukraine war, world petroleum inventories, U.S. trade policies, and associated geopolitical uncertainties.
 - Domestic factors include global energy market pricing, U.S. economic policy and the seasonal transition from spring to summer.
- ❑ Summary of spot prices for market benchmarks (see Page 2):
 - WTI and Brent crude spot prices both increased compared to the prior week.
 - Natural gas (Henry Hub) and propane (Mt. Belvieu) spot prices remained relatively consistent compared to the prior week
- ❑ Regional fuel inventories compared to the previous week (see Pages 2 through 4):
 - Propane inventories increased 14% compared to the prior week.
 - Ultra-low sulfur diesel (ULSD) and total gasoline decrease while natural gas increased compared to the prior week.
- ❑ New York retail prices for heating and transportation fuels (see Pages 5 and 6):
 - Kerosene prices decreased while heating oil and propane remained similar since the prior survey, with only +/- 1% change (3/30/2026).
 - NY Transportation fuels retail prices increased compared to the prior week.
- ❑ New York State weather outlook and seasonal conditions summary (see Pages 7 and 8)
 - The National Oceanic and Atmospheric Administration (NOAA) forecasts indicate likely above normal temperatures for the 6-10 day and likely to leaning above normal for the 8-14 day period.
 - The NOAA forecasts for precipitation indicate near normal to leaning above for the 6-10 and 8-14 day periods.

Issue Contents and Quick Links:

| | |
|---|--------|
| National Market Benchmarks and East Region Natural Gas Inventories | Page 2 |
| National Crude Inventories, Refining, and PADD1 Petroleum Products Movement | Page 3 |
| PADD1B Regional Liquid Fuels Inventories | Page 4 |
| New York State Transportation Fuel Prices Summary | Page 5 |
| New York State Heating Fuel Prices Summary | Page 6 |
| Weather Outlook | Page 7 |
| Degree Days Outlook and Summary | Page 8 |
| References | Page 9 |

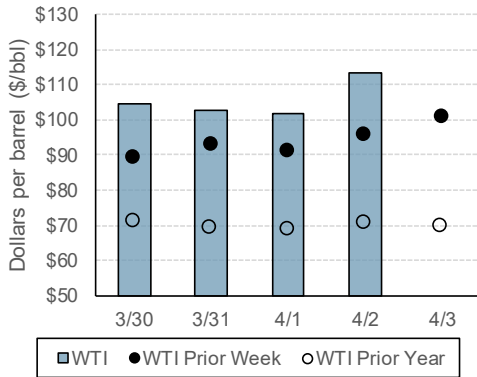
Notes:

1. Data and information presented are from a variety of sources, see references section for detailed citations. Visualizations by NYSERDA unless otherwise noted.
2. Data represent the most recent week ending on Fridays, unless otherwise noted. See individual graphics and summaries for details.
3. Daily spot price data for WTI and Brent crude, Henry Hub natural gas, and Mt. Belvieu propane are not available for 4/3/2026 due to the Good Friday/Easter holiday.

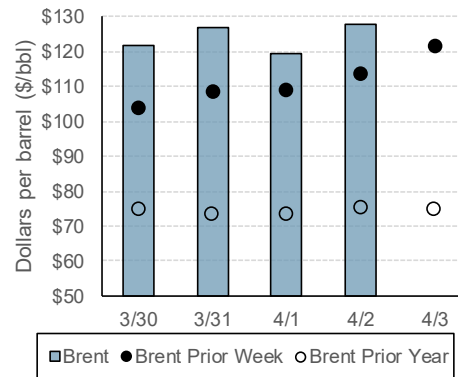
National Benchmarks and East Region Natural Gas Inventories

National Spot Price Benchmarks

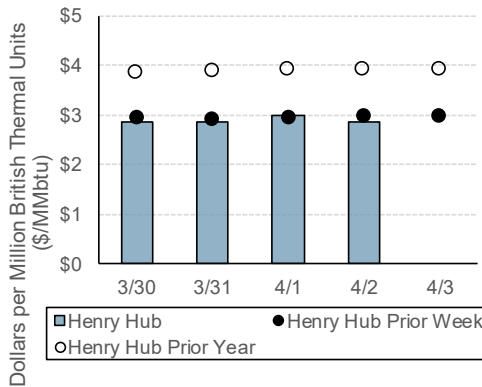
WTI Crude Oil Spot Prices Summary



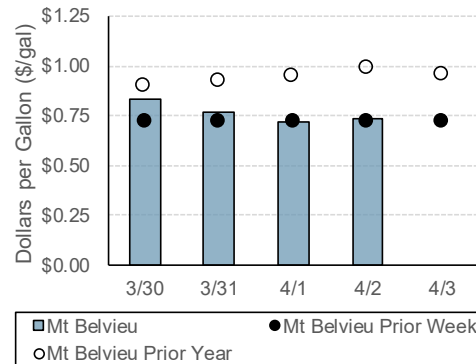
Brent Crude Oil Spot Prices Summary



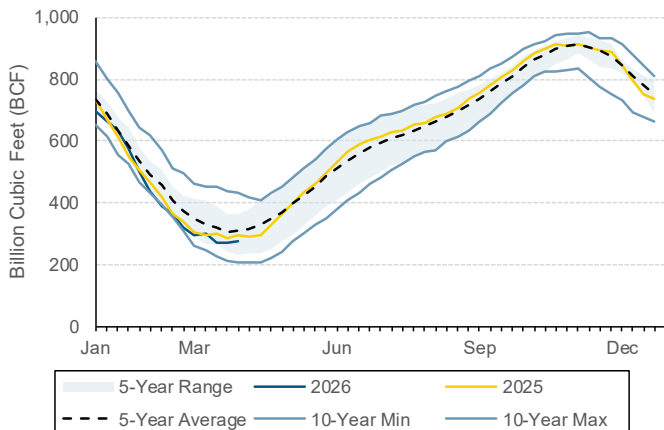
Natural Gas Henry Hub Spot Prices Summary



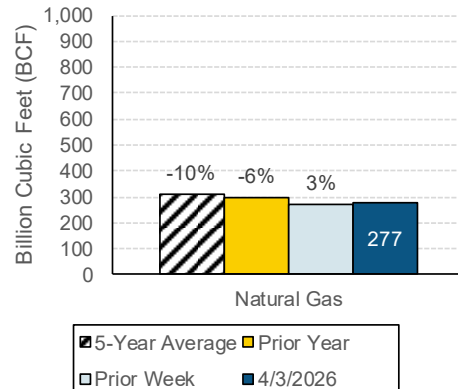
Propane Mt. Belvieu Spot Prices Summary



East Region: Natural Gas Working Underground Storage



Historical Comparison

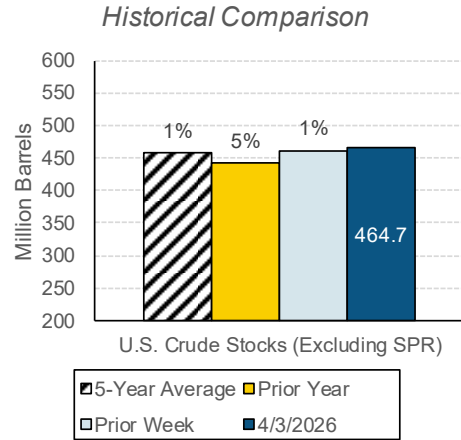
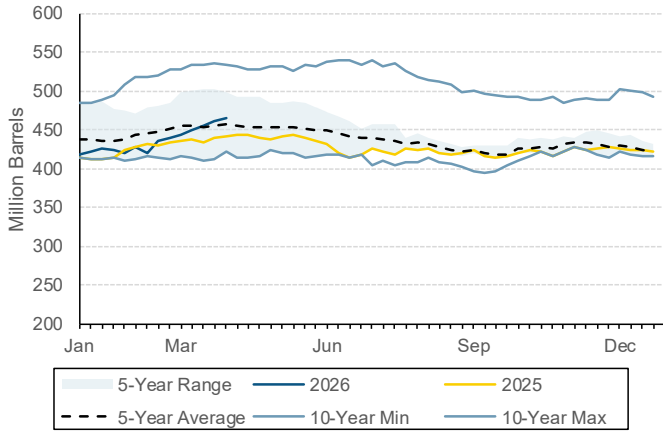


Notes:

1. Data from USEIA, see references section for detailed citations. Visualizations by NYSERDA.
2. Historical comparison bar chart percentages reflect current week. Positive values indicate current week is greater, negative values indicate current week is less than the historical value.

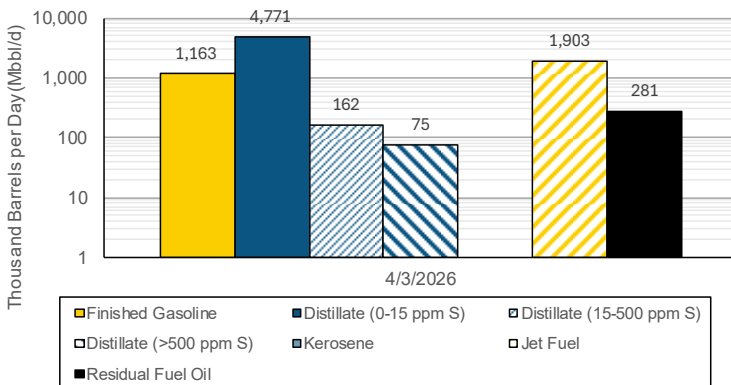
National Crude Inventories, Refining, and PADD1 Petroleum Product Movement

National Crude Inventory (Excluding Strategic Petroleum Reserve [SPR])

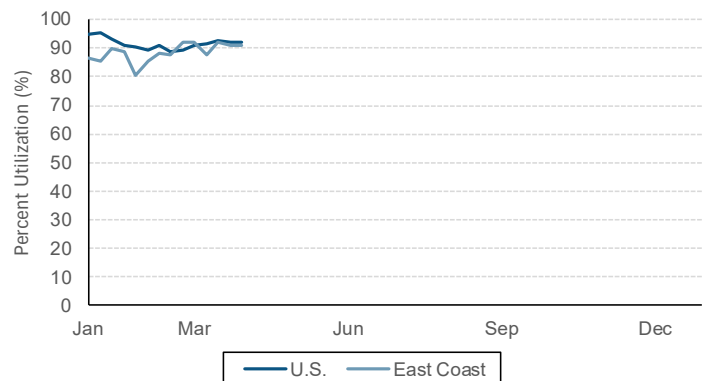


National Refinery Production and Utilization

U.S. Refiner Net Production

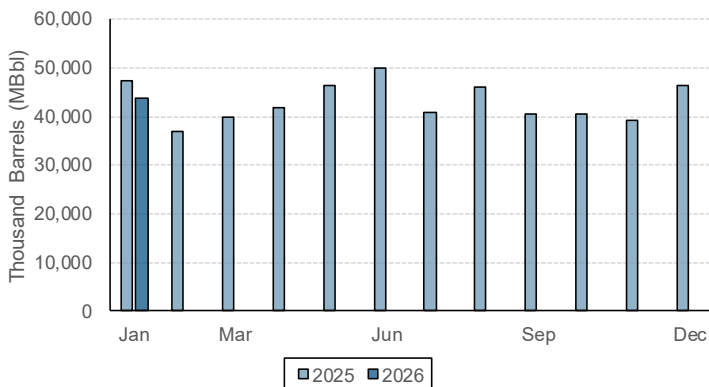


Refinery Capacity Utilization: 2026

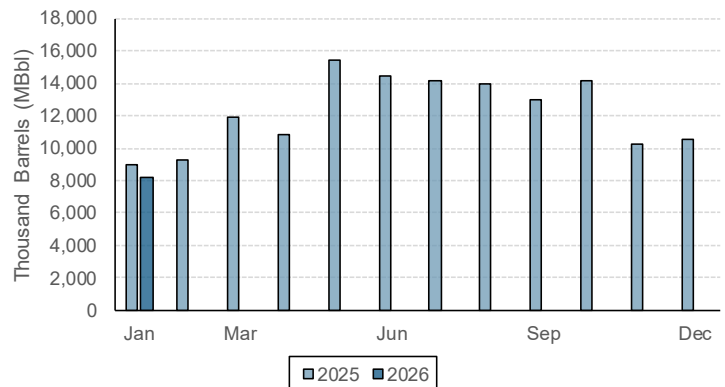


PADD1 (East Coast) Petroleum Product Movement: Imports and Exports Summary

PADD1 Imports: Crude Oil and Petroleum Products



PADD1 Exports: Crude Oil and Petroleum Products

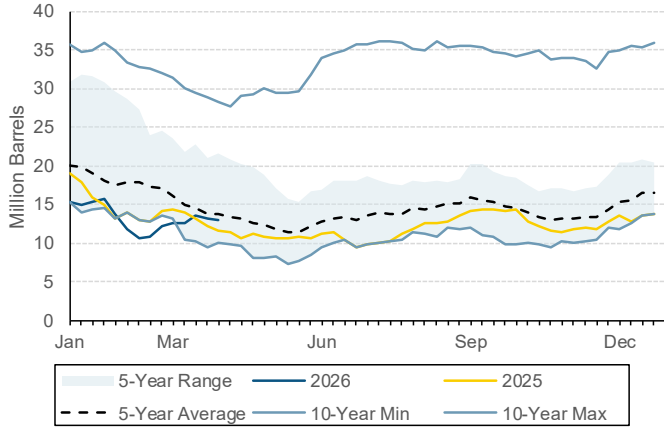


Notes:

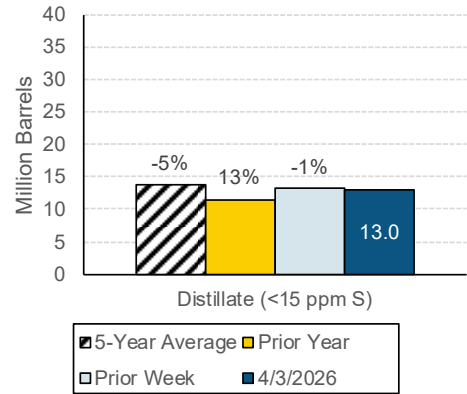
1. Data from USEIA, see references section for detailed citations. Visualizations by NYSERDA.
2. Imports and Exports datasets are monthly and have a 2-month data lag.
3. Historical comparison bar chart percentages reflect current week. Positive values indicate current week is greater, negative values indicate current week is less than the historical value.

PADD1B Regional Liquid Fuels Inventories

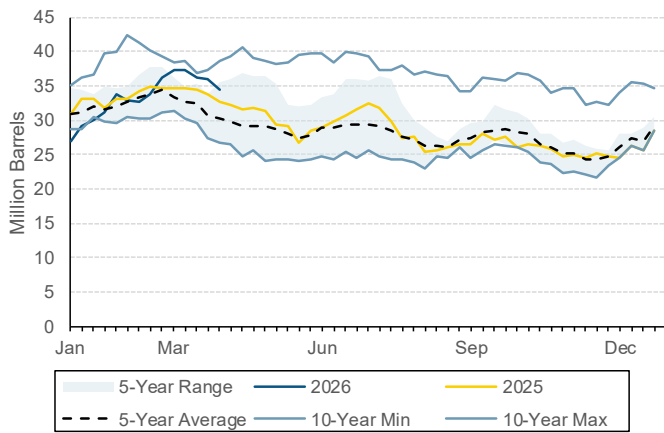
Distillate Fuel Oil (0 – 15 ppm Sulfur)



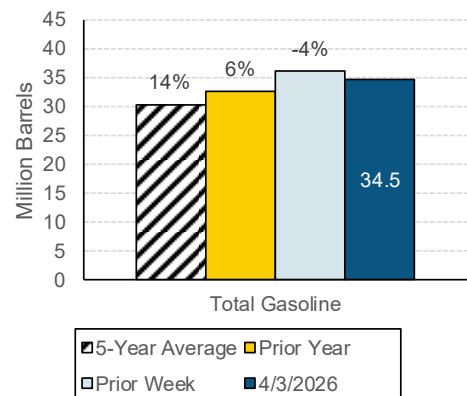
Historical Comparison



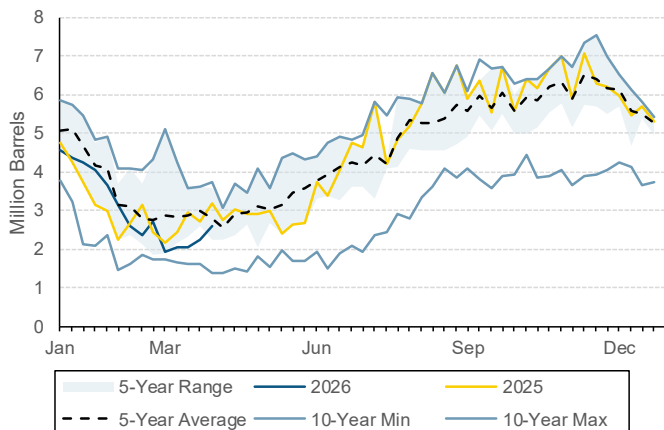
Total Gasoline



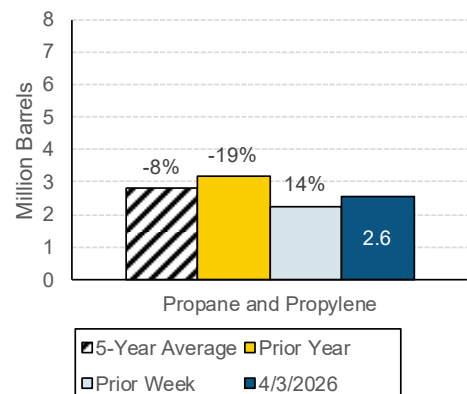
Historical Comparison



Propane and Propylene



Historical Comparison

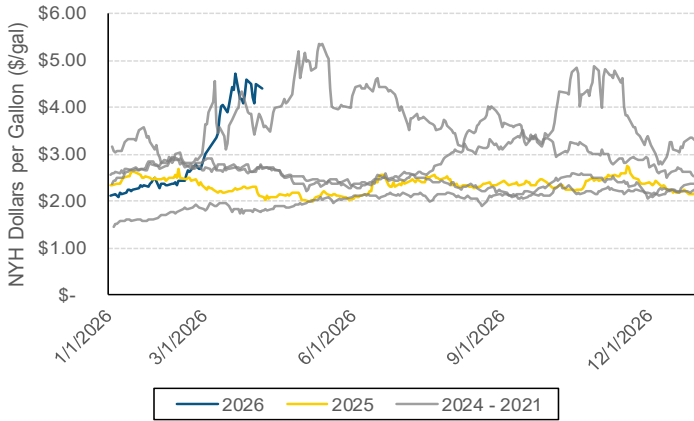


Notes:

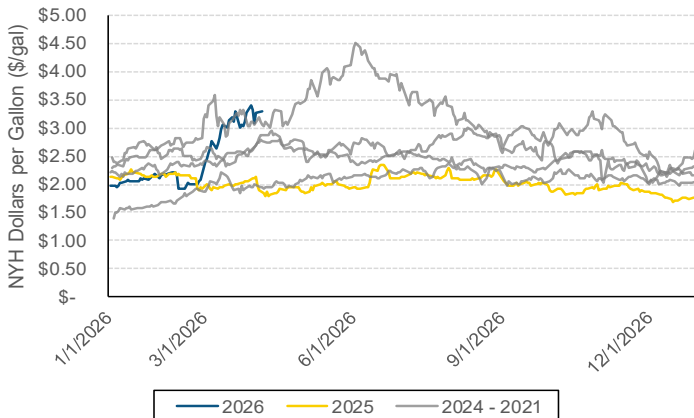
1. Data from USEIA, see references section for detailed citations. Visualizations by NYSERDA.
2. Historical comparison bar chart percentages reflect current week. Positive values indicate current week is greater, negative values indicate current week is less than the historical value.

Transportation Fuel Prices Summary

Ultra-low Sulfur Diesel New York Harbor Spot Prices¹



Conventional Gasoline (Regular) New York Harbor Spot Prices¹



Visit the following NYSERDA online resource for regional New York State retail price summaries for transportation:

[Weekly Transportation Fuels Dashboard](#)

Transportation fuel average prices from New York Harbor are daily datapoints on business days. Weekends and holiday market prices are not presented.

Average retail prices presented in the table below reflect a statewide weekly average price.

New York State Retail Prices

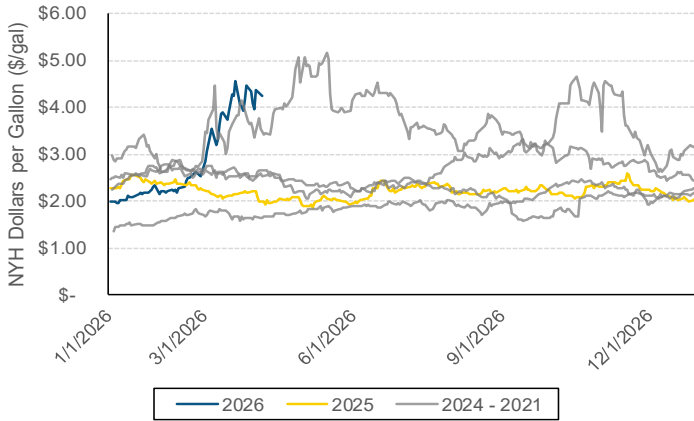
| Fuel Type | 4/2/2026 | 3/26/2026 | % Difference | Prior Year | % Difference |
|--|----------|-----------|--------------|------------|--------------|
| Regular Gasoline (dollars per gallon) ² | \$3.944 | \$3.892 | 1.3% | \$3.127 | 26.1% |
| On-road Diesel (dollars per gallon) ² | \$5.760 | \$5.632 | 2.3% | \$3.941 | 46.1% |

Notes:

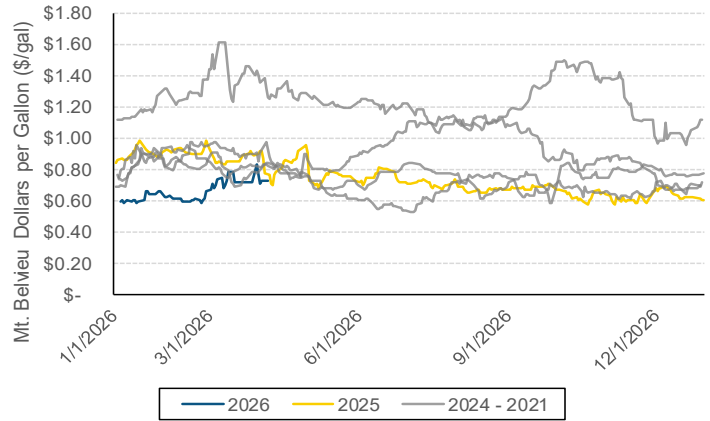
1. Wholesale New York Harbor prices from USEIA, see references section for detailed citation. Visualizations by NYSERDA.
2. Retail price data from AAA, see references section for detailed citation. Visualization by NYSERDA.

Heating Fuel Prices Summary

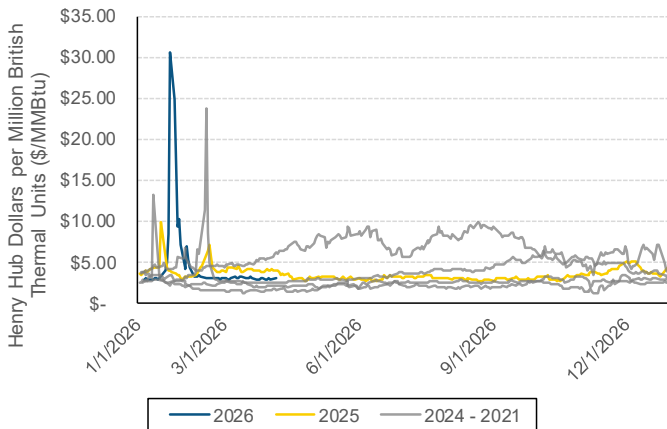
No. 2 Heating Oil: New York Harbor Spot Prices¹



Propane: Mt. Belvieu Spot Prices¹



Natural Gas: Henry Hub Spot Prices¹



Visit the following NYSERDA online resources for regional New York State retail price summaries for heating fuels:

[Heating Oil Prices and Dashboard](#)

[Kerosene Prices and Dashboard](#)

[Propane Prices and Dashboard](#)

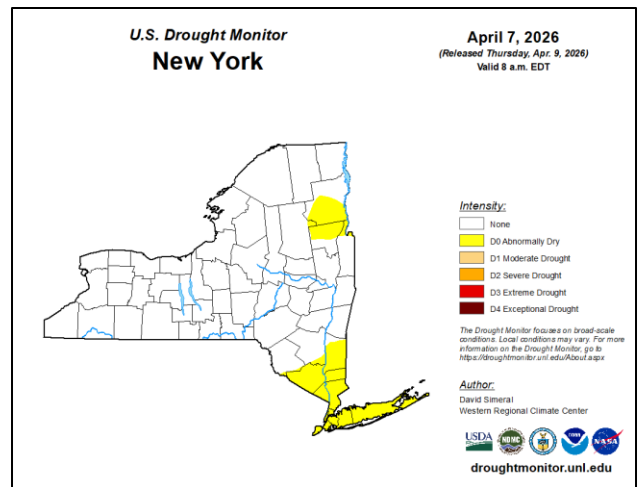
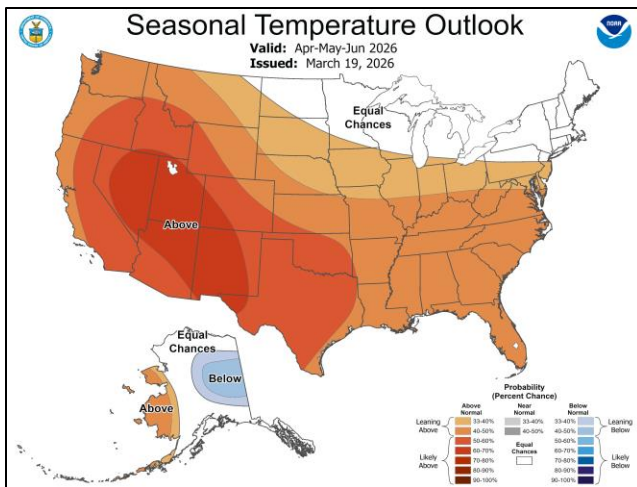
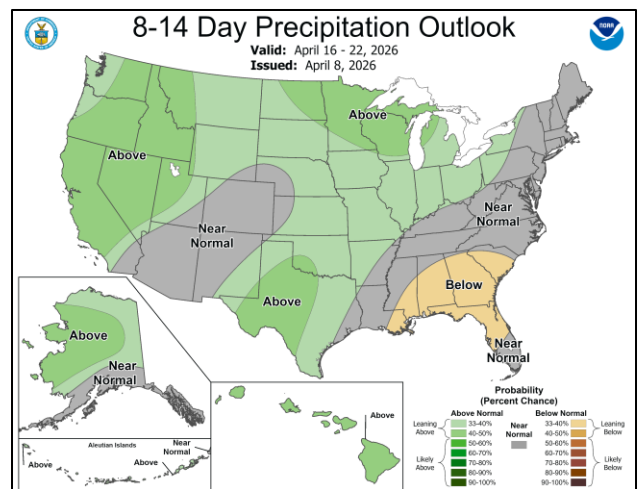
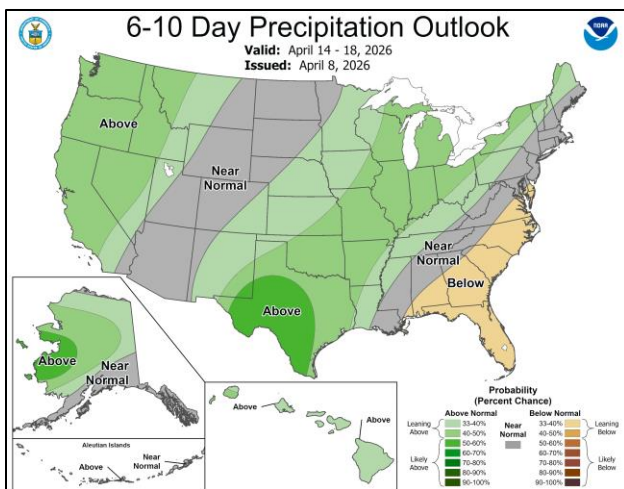
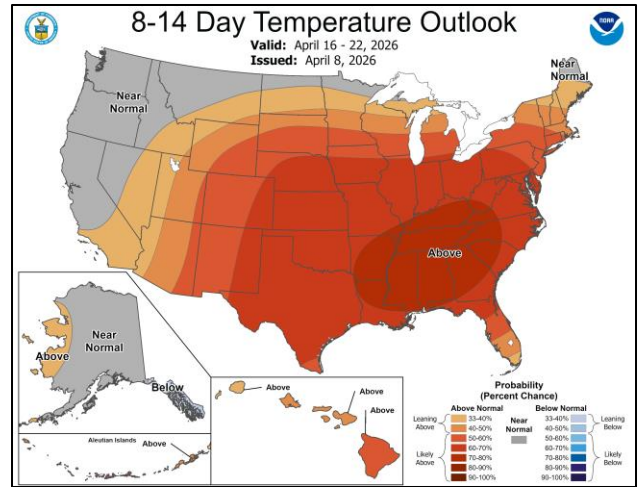
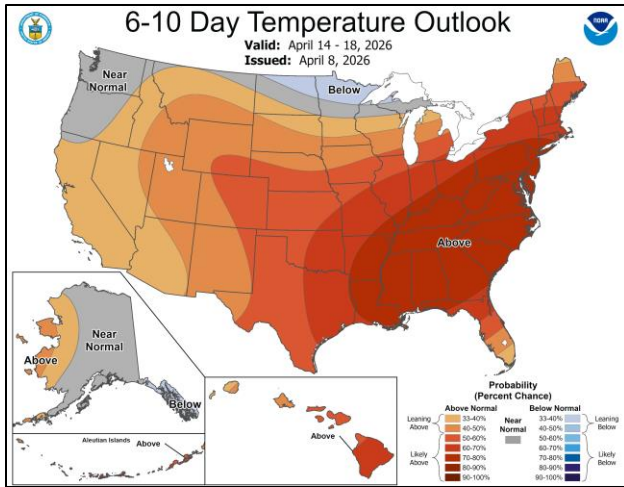
Heating fuels retail price summaries are part of the USEIA State Heating Oil and Propane Program/NYSERDA Heating Fuel Prices surveys.

New York State Retail Prices

| USEIA and NYSERDA Liquid Products Survey | 3/30/2026 | 3/23/2026 | % Difference | Prior Year | % Difference |
|---|----------------------|---------------------|---------------------|----------------------|---------------------|
| Ultra-low #2 Heating Oil Posted Credit Prices (dollars per gallon) ² | \$5.731 | \$5.749 | -0.3% | \$3.830 | 49.7% |
| Propane Posted Credit Prices - 1,100 gallon usage (dollars per gallon) ² | \$3.600 | \$3.611 | -0.3% | \$3.563 | 1.0% |
| Kerosene Posted Credit Prices (dollars per gallon) ² | \$6.154 | \$6.255 | -1.6% | \$4.668 | 31.8% |
| Monthly USEIA Reporting | November 2025 | October 2025 | % Difference | November 2024 | % Difference |
| Monthly Average Residential Natural Gas Prices (dollars per Therm) ³ | \$1.738 | \$2.312 | -24.8% | \$1.899 | -8.5% |

- Notes:
1. Wholesale prices data are from USEIA, see references section for detailed citation. Visualizations by NYSERDA.
 2. Retail price data from USEIA and NYSERDA, see references section for detailed citation. Visualization by NYSERDA. Highlighted cells indicate price correction.

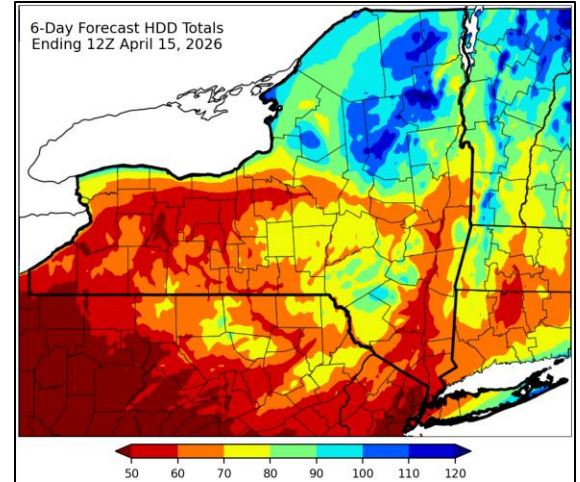
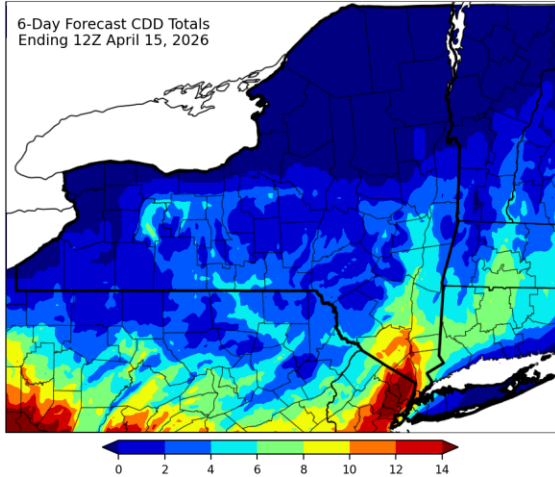
Weather Outlook and Seasonal Threat Monitoring



- Notes:
1. Temperature, precipitation, and tropical outlook graphics from NOAA. See references section for detailed citations.
 2. Drought monitoring for New York State from National Drought Mitigation Center. See references section for detailed citation.

Degree Days Outlook and Summary

New York State Degree Day Forecast



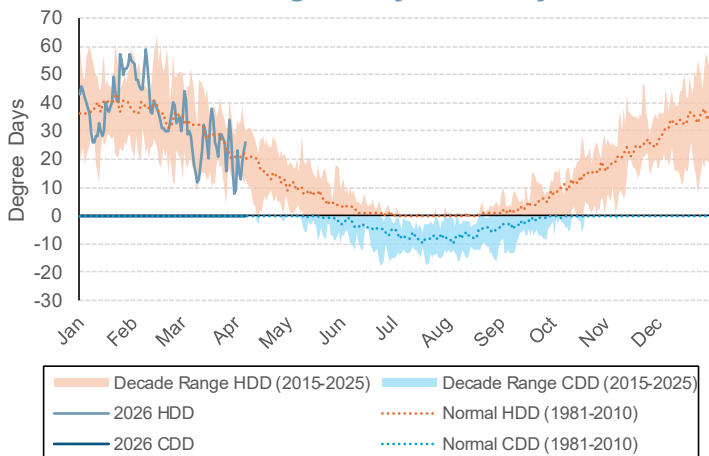
| City | 6-Day CDD Forecast | Normal | % Difference |
|-------------|--------------------|--------|--------------|
| Albany | 4 | 1 | 300% |
| Binghamton | 1 | 1 | 0% |
| Buffalo | 0 | 0 | |
| Glens Falls | 1 | 0 | |
| Massena | 0 | 0 | |
| NYC | 7 | 2 | 250% |
| Rochester | 2 | 1 | 100% |
| Syracuse | 3 | 1 | 200% |
| Watertown | 0 | 0 | |

Forecast Dates:
04/09/2026 - 04/14/2026

| City | 6-Day HDD Forecast | Normal | % Difference |
|-------------|--------------------|--------|--------------|
| Albany | 72 | 113 | -36% |
| Binghamton | 84 | 134 | -37% |
| Buffalo | 67 | 127 | -47% |
| Glens Falls | 87 | 133 | -35% |
| Massena | 103 | 145 | -29% |
| NYC | 64 | 79 | -19% |
| Rochester | 68 | 120 | -43% |
| Syracuse | 68 | 124 | -45% |
| Watertown | 91 | 142 | -36% |

Forecast Dates:
04/09/2026 - 04/14/2026

New York State Degree Day Summary: Current Year



Notes:

1. Heating degree day (HDD) forecast from NOAA and Northeast Regional Climate Center at Cornell University (NRCC). See references section for detailed citations.
2. HDD and cooling degree day (CDD) data from NOAA. Positive values represent HDD and negative values represent CDD. See references section for detailed citation. Visualizations by NYSERDA.

Visit the following NYSERDA online resource for regional New York State degree day data along with additional information:

[Weather Data](#)

References

Fuel Inventories, Refining, and Import/Export

U.S. Energy Information Administration (USEIA). 2026. Petroleum & Other Liquids. “*Refinery Utilization and Capacity: East Coast.*”. https://www.eia.gov/dnav/pet/pet_pnp_unc_dcu_rec_m.htm.

USEIA. 2026. Petroleum & Other Liquids. “*Refinery Utilization and Capacity: U.S.*”. https://www.eia.gov/dnav/pet/pet_pnp_unc_dcu_nus_m.htm.

USEIA. 2026. Petroleum & Other Liquids. “*Weekly Imports & Exports: East Coast (PADD1)*”. https://www.eia.gov/dnav/pet/xls/PET_MOVE_WKLY_DC_R10-Z00_MBBLPD_W.xls.

USEIA. 2026. Petroleum & Other Liquids. “*Weekly Stocks: PADD1B*”. https://www.eia.gov/dnav/pet/xls/PET_STOC_WSTK_DCU_R1Y_W.xls.

U.S. Energy Information Administration (USEIA). 2026. Petroleum & Other Liquids. “*Weekly Stocks: U.S.*”. https://www.eia.gov/dnav/pet/xls/PET_STOC_WSTK_DCU_NUS_W.xls.

USEIA. 2026. Natural Gas. “*Weekly Working Gas in Underground Storage*”. https://www.eia.gov/dnav/ng/xls/NG_STOR_WKLY_S1_W.xls.

Fuel Prices

AAA. 2026. National and State Fuel Prices. <https://gasprices.aaa.com/>.

USEIA. 2026. Natural Gas. “*Natural Gas Spot and Futures Prices (NYMEX)*”. https://www.eia.gov/dnav/ng/ng_pri_fut_s1_d.htm.

USEIA. 2026. Petroleum & Other Liquids. “*Heating Oil and Propane Update*”. <https://www.eia.gov/petroleum/heatingoilpropane/>.

USEIA. 2026. Petroleum & Other Liquids. “*Spot Prices: Daily*”. https://www.eia.gov/dnav/pet/pet_pri_spt_s1_d.htm.

Weather Outlook and Data

National Oceanic and Atmospheric Administration (NOAA). 2026. National Hurricane Center. <https://www.nhc.noaa.gov/gtwo.php?basin=atlc&fdays=2>.

NOAA. National Weather Service Climate Prediction Center. <https://www.cpc.ncep.noaa.gov/>.

NOAA. 2026. National Weather Service Climate Prediction Center. “*Degree Day Statistics*”. https://www.cpc.ncep.noaa.gov/products/analysis_monitoring/cdus/degree_days/.

Northeast Regional Climate Center (NRCC). Analyses for Industry. “*Weekly HDD and CDD Summary for New York*”. <https://www.nrcc.cornell.edu/industry/hdd/>.

National Drought Mitigation Center. State Drought Monitor: New York. <https://droughtmonitor.unl.edu/CurrentMap/StateDroughtMonitor.aspx?NY>.

Note that there may be slight differences between source reporting and the summaries presented in this report due to methodological differences.

Developed weekly by the NYSERDA Energy Markets team, part of the Policy, Analysis, and Research group. For questions, please reach out to:

Nicole Kerrison, Program Manager, Nicole.Kerrison@nyserda.ny.gov

Brad Leach, Senior Advisor, Brad.Leach@nyserda.ny.gov

Joseph Osso, Jr., Senior Analyst, Joseph.Osso@nyserda.ny.gov