

Highlights

- In the past week, the New York State average-weekly retail gasoline price was \$3.900/gallon, up 13.6¢/gallon (3.6%) from the prior week and up 17.1¢/gallon (4.6%) from the year-ago price.
- Diesel was \$4.190/gallon, up 3.1¢/gallon (0.7%) from the prior week and up 12.4¢/gallon (3.1%) from the year-ago price.
- The spread between Brent and WTI crude oil prices narrowed again this week to \$2.53/barrel. As recently as March 1, 2013, Brent was \$20.23/barrel above WTI. Crude oil supplies benchmarked to Brent are an important input to East Coast refineries.
- Mid-Atlantic ULSD inventories remain well supplied; up 1.0% from last week and 83.2% above last year.

Retail Prices

Prices are from the “AAA Daily Fuel Gauge Report.”

Regular Gasoline— As of July 24, 2013, the most recent daily price available, the statewide average regular gasoline price equaled \$3.934/gallon. Compared to the year earlier price of \$3.768/gallon, the statewide average has increased \$0.166/gallon (4.4%).

The all-time high of \$4.309/gallon occurred on July 9th, 2008.

Diesel— As of July 24, 2013, the most recent daily price available, the statewide average diesel price equaled \$4.212/gallon. Compared to the year earlier price of \$4.081/gallon, the statewide average has increased \$0.131/gallon (3.2%).

The all-time high of \$5.138/gallon occurred on June 18th, 2008.

Crude Oil Spot Prices

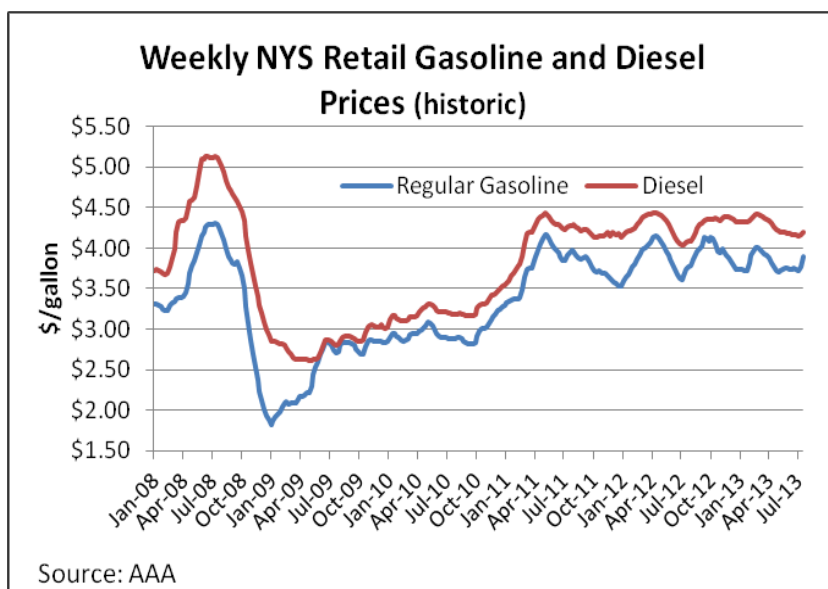
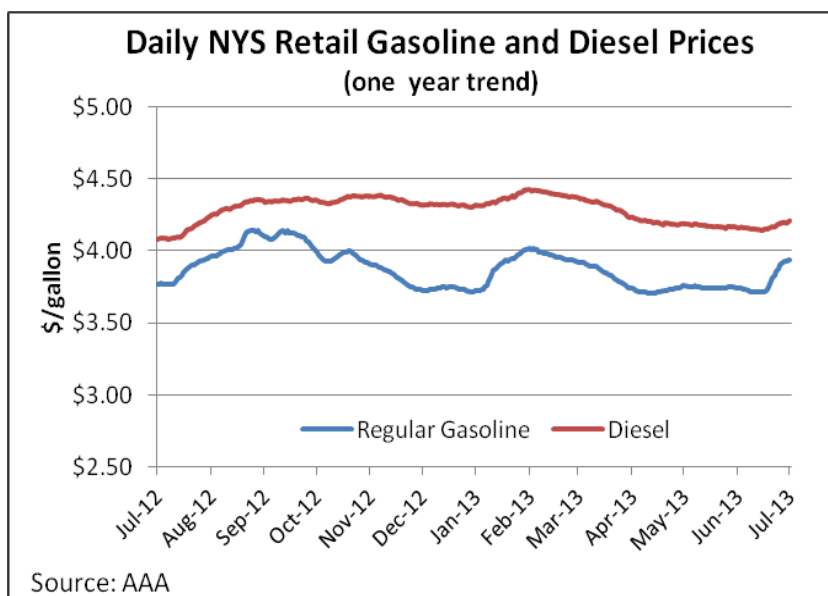
(see charts on page 3)

WTI—For the week ending July 19, 2013, WTI crude oil spot prices averaged \$106.88/bbl, an increase of \$2.18/bbl (2.1%) from the prior week average of \$104.70/bbl. WTI prices are now \$16.54/bbl (18.3%) above the year-ago weekly average of \$90.34/bbl.

The all-time weekly average high of \$142.52/bbl occurred the week ending July 4th, 2008.

Brent—For the week ending July 19, 2013, Brent crude oil spot prices averaged \$109.41/bbl, an increase of \$1.15/bbl (1.1%) from the week-ago average of \$108.26/bbl. Brent prices are now \$4.01/bbl (3.8%) above the year-ago weekly average of \$105.40/bbl.

The all-time weekly average high of \$141.07/bbl occurred the week ending July 4th, 2008.



New York State Retail Regular Gasoline Weekly Average Prices (dollars per gallon)					
MEIRO REGION	7/22/2013	7/15/2013	% Change vs. Prior Week	Year Ago	% Change vs. Last Year
Albany – Schenectady - Troy	3.806	3.663	3.9%	3.620	5.2%
Binghamton	3.855	3.709	3.9%	3.666	5.2%
Buffalo - Niagara Falls	3.824	3.732	2.4%	3.627	5.4%
Nassau - Suffolk	3.973	3.823	3.9%	3.834	3.6%
New York	4.011	3.868	3.7%	3.859	3.9%
Rochester	3.804	3.692	3.0%	3.614	5.2%
Syracuse	3.795	3.645	4.1%	3.615	5.0%
Utica - Rome	3.844	3.713	3.5%	3.659	5.1%
Statewide	3.900	3.764	3.6%	3.729	4.6%
New York State Retail Diesel Weekly Average Prices (dollars per gallon)					
Albany – Schenectady - Troy	4.066	4.023	1.1%	3.935	3.3%
Binghamton	4.043	4.011	0.8%	3.971	1.8%
Buffalo - Niagara Falls	4.105	4.091	0.3%	4.020	2.1%
Nassau - Suffolk	4.231	4.186	1.1%	4.064	4.1%
New York	4.407	4.373	0.8%	4.260	3.5%
Rochester	4.111	4.094	0.4%	4.006	2.6%
Syracuse	4.055	4.041	0.3%	3.988	1.7%
Utica - Rome	4.074	4.045	0.7%	3.986	2.2%
Statewide	4.190	4.159	0.7%	4.066	3.1%

[Source: AAA, Daily prices. Weekly averaging by NYSERDA](#)

Inventory, Production and Demand—Current and historic data is presented in the table below.

Weekly Inventories (million barrels)							
Fuel Type	7/19/2013	7/12/2013	% Change vs. Last Week	Year Ago	% Change vs. Last Year	5-Year Average	% Change vs. 5-Year Avg
Mid-Atlantic PADD I-B Gasoline	28.9	29.8	-2.8%	24.4	18.9%	28.5	1.7%
East Coast PADD I Gasoline	61.1	62.5	-2.3%	54.1	12.9%	57.8	5.6%
East Coast PADD I Ethanol	6.7	6.7	1.2%	7.3	-7.4%	n/a	n/a
US Total Gasoline	222.7	224.1	-0.6%	210.0	6.0%	215.6	3.3%
Mid-Atlantic PADD I-B Highway Diesel (0-15 ppm)	17.9	17.8	1.0%	9.8	83.2%	9.7	84.5%
US Crude Oil	364.2	367.0	-0.8%	380.1	-4.2%	345.1	5.5%
Weekly Gasoline Production and Demand (million barrels per day)							
East Coast PADD I Finished Gasoline Production	3.0	2.9	4.1%	3.0	2.0%	2.7	13.0%
US Total Finished Gasoline Production	9.2	9.0	1.8%	9.3	-0.6%	9.3	-1.0%
Total US Gasoline Demand	9.0	8.7	2.9%	8.7	3.7%	9.1	-1.7%

ppm = parts per million sulfur content

Middle Atlantic is DE, DC, MD, NJ, NY, and PA

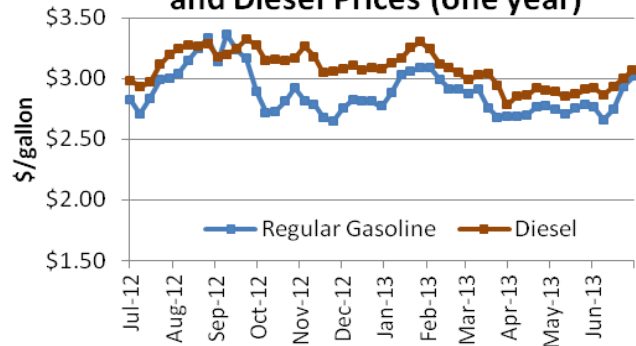
Source: US DOE/EIA

Spot Prices—The table and charts below show the spot market prices for regular gasoline, ultra-low sulfur diesel (ULSD), West Texas Intermediate (WTI) crude, and Brent crude oil.

Spot Prices, Weekly Average			
Fuel	7/19/2013	Year Ago	% Change
Regular Gasoline (\$/gal)	3.015	2.820	6.9%
Diesel (\$/gal)	3.069	2.984	2.8%
WTI (\$/bbl)	106.88	90.34	18.3%
Brent (\$/bbl)	109.41	105.40	3.8%

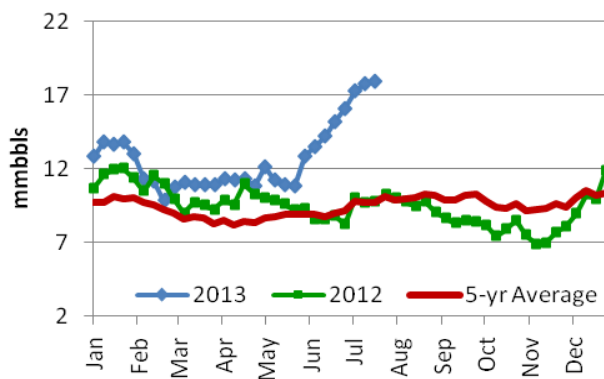
Note: Gasoline and diesel prices are for New York Harbor

Weekly Spot NY Harbor Gasoline and Diesel Prices (one year)



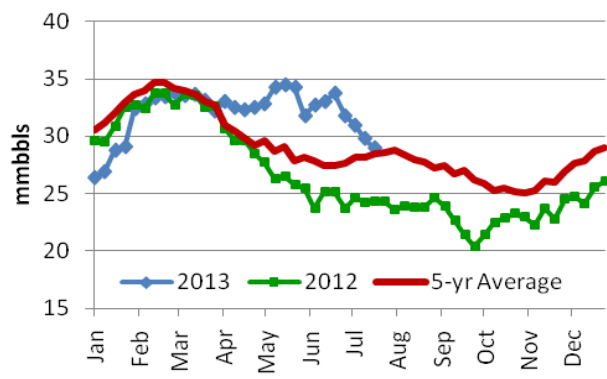
Source: EIA

Mid-Atlantic ULSD Inventories



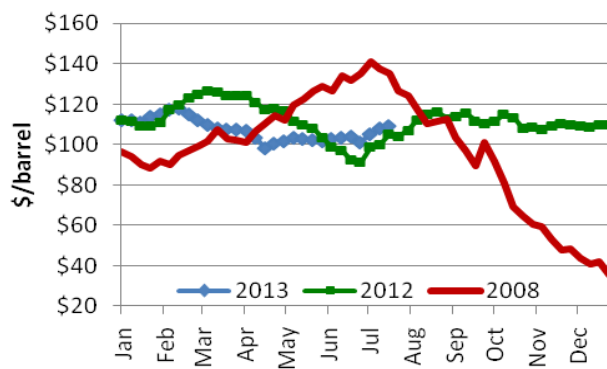
Source: EIA

Mid-Atlantic Gasoline Inventories



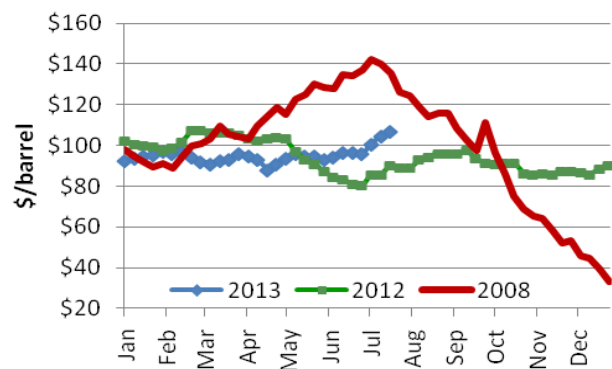
Source: EIA

Brent Crude Oil Spot Price



Source: EIA

WTI Crude Oil Spot Price



Source: EIA

For more information please contact Andrew Kasius at (518) 862-1090 ext. 3327, e-mail ask@nyserda.ny.gov.