An aerial photograph of a mountainous landscape in the Adirondacks. In the foreground, there is a complex metal structure, likely part of a monitoring station, with several vertical poles and horizontal arms. The background shows rolling mountains, dense forests, and several lakes under a blue sky with scattered clouds. The lighting suggests it's either early morning or late afternoon.

Monitoring of an
Adirondack Ecosystem:
**Impacts of Acidic and
Mercury Deposition
and Climate Change
on Watersheds**



NEW YORK
STATE OF
OPPORTUNITY

NYSERDA

NYSERDA's Promise to New Yorkers:

NYSERDA provides resources, expertise, and objective information so New Yorkers can make confident, informed energy decisions.

Mission Statement:

Advance innovative energy solutions in ways that improve New York's economy and environment.

Vision Statement:

Serve as a catalyst – advancing energy innovation, technology, and investment; transforming New York's economy; and empowering people to choose clean and efficient energy as part of their everyday lives.

Monitoring Brief

EMEP Program Agreement 31250

Monitoring of an Adirondack Ecosystems: Impacts of Acidic and Mercury Deposition and Climate Change on Watersheds

November 3, 2015

Myron J. Mitchell

Patrick J. McHale

Charlotte Demers

State University of New York
College of Environmental Science and Forestry
Syracuse, NY

Charles T. Driscoll

Syracuse University

Syracuse, NY

This report was prepared by State University of New York College of Environmental Science and Forestry and Syracuse University in the course of performing work contracted for and sponsored by the New York State Energy Research and Development Authority (hereafter "NYSERDA"). The opinions expressed in this report do not necessarily reflect those of NYSEDA or the State of New York, and reference to any specific product, service, process, or method does not constitute an implied or expressed recommendation or endorsement of it. Further, NYSEDA, the State of New York, and the contractor make no warranties or representations, expressed or implied, as to the fitness for particular purpose or merchantability of any product, apparatus, or service, or the usefulness, completeness, or accuracy of any processes, methods, or other information contained, described, disclosed, or referred to in this report. NYSEDA, the State of New York, and the contractor make no representation that the use of any product, apparatus, process, method, or other information will not infringe privately owned rights and will assume no liability for any loss, injury, or damage resulting from, or occurring in connection with, the use of information contained, described, disclosed, or referred to in this report.

NYSERDA makes every effort to provide accurate information about copyright owners and related matters in the reports we publish. Contractors are responsible for determining and satisfying copyright or other use restrictions regarding the content of reports that they write, in compliance with NYSEDA's policies and federal law. If you are the copyright owner and believe a NYSEDA report has not properly attributed your work to you or has used it without permission, please email print@nyserda.ny.gov



Tower at Arbutus Lake Inlet (Archer Creek)

Credit: Patrick McHale



BACKGROUND

Considerable attention has been focused on the Adirondack region or New York State over the past three decades due to the relatively high rates of atmospheric deposition coupled with the associated effects on soil and water quality in the region. For sulfate and nitrate deposition, there have been marked decreases associated with air quality management programs and the recent improvements of terrestrial and aquatic ecosystems. Despite decreases in acid deposition there has been persistent concern about the long-term depletion of available nutrient cations, such as calcium in Adirondack soils, which have been directly linked with forest health of major tree species including sugar maple.

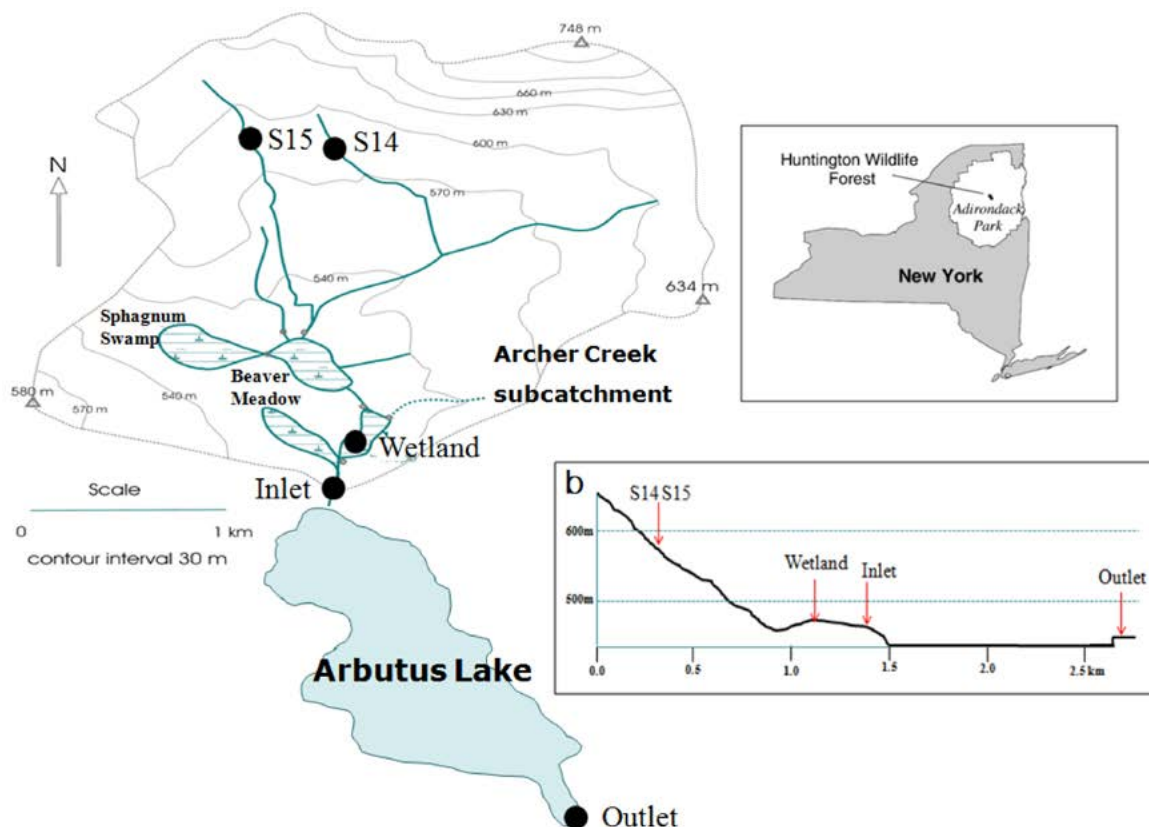
Another aspect of ecosystem effects of air pollution is contamination by atmospheric mercury deposition and subsequent transport of mercury through ecosystems and bioaccumulation of methyl mercury in both aquatic and terrestrial animals. The long-term effects of atmospheric pollutants are concomitantly being influenced by changes in temperature and precipitation that will affect pollutant and nutrient fluxes in forest ecosystems.

A better understanding of how climatic and atmospheric deposition influence ecosystems would aid in understanding the implications of policy on the environment.

MONITORING ACTIVITIES

The current project at the Huntington Forest (HF)/Arbutus Watershed builds on past studies and monitoring at this site and complements other monitoring activities by providing intensive monitoring to better understand the linkages between deposition and ecological effects. The HF/Arbutus Watershed is located in the central Adirondack region of New York State (Figure 1). A wide range of environmental parameters related to air pollutants and climate change are being measured in forested watersheds, with records extending back to the mid-1940s. The current effort is supported by NYSERDA and includes the analytical costs to the National Atmospheric Deposition Program (NADP) for the national trends network (NTN) site at the Huntington Forest (NY20) established in 1978 (one of the oldest NADP/NTN sites), wet-only Mercury Deposition Network (MDN), Litterfall Mercury Monitoring Initiative, the Atmospheric Mercury Network (AMNET), the Passive Ammonia Monitoring network (AMoN) and EPA supported Clean Air Status and Trends network (CASTNET). In addition to this intensive air quality monitoring effort, there is an extensive meteorological, hydrological, and water chemistry collection program that includes the outlet of Arbutus Lake, the major inlet (Archer Creek) of Arbutus Lake, two sub-catchments in the upper reaches of Archer Creek, and a series of ground water wells. This monitoring system (<http://www.esf.edu/hss/em/huntington/index.html>) provides real-time data on both hydrological and meteorological measurements that are connected via radio transmission to the Internet and are publically available. This intensive monitoring effort at the Huntington Forest is unique to the Adirondacks and serves as an important reference to some of the more extensive monitoring activities in the Adirondacks including the Adirondack Long-Term Lake Monitoring (ALTM) project that began monthly monitoring of water chemistry in 1982 for 17 lakes in the Adirondacks including Arbutus Lake. The project was subsequently expanded to 52 lakes in 1992.

Figure 1. Location of Huntington Forest in the Adirondack Park of New York State and Arbutus Watershed showing surface water sampling locations (From Kang and Mitchell, 2013)



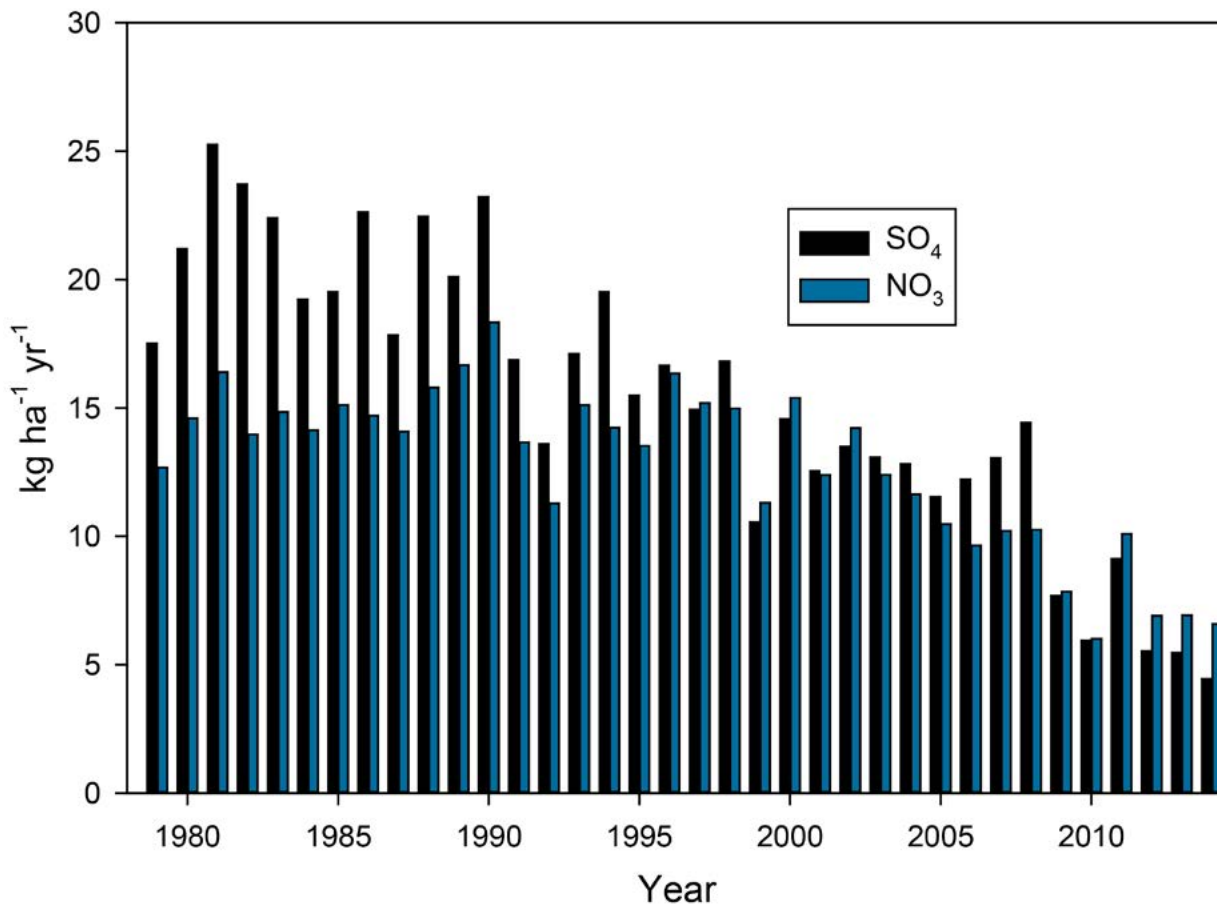


V-notch weir at sub-catchment 14

Credit: Patrick McHale

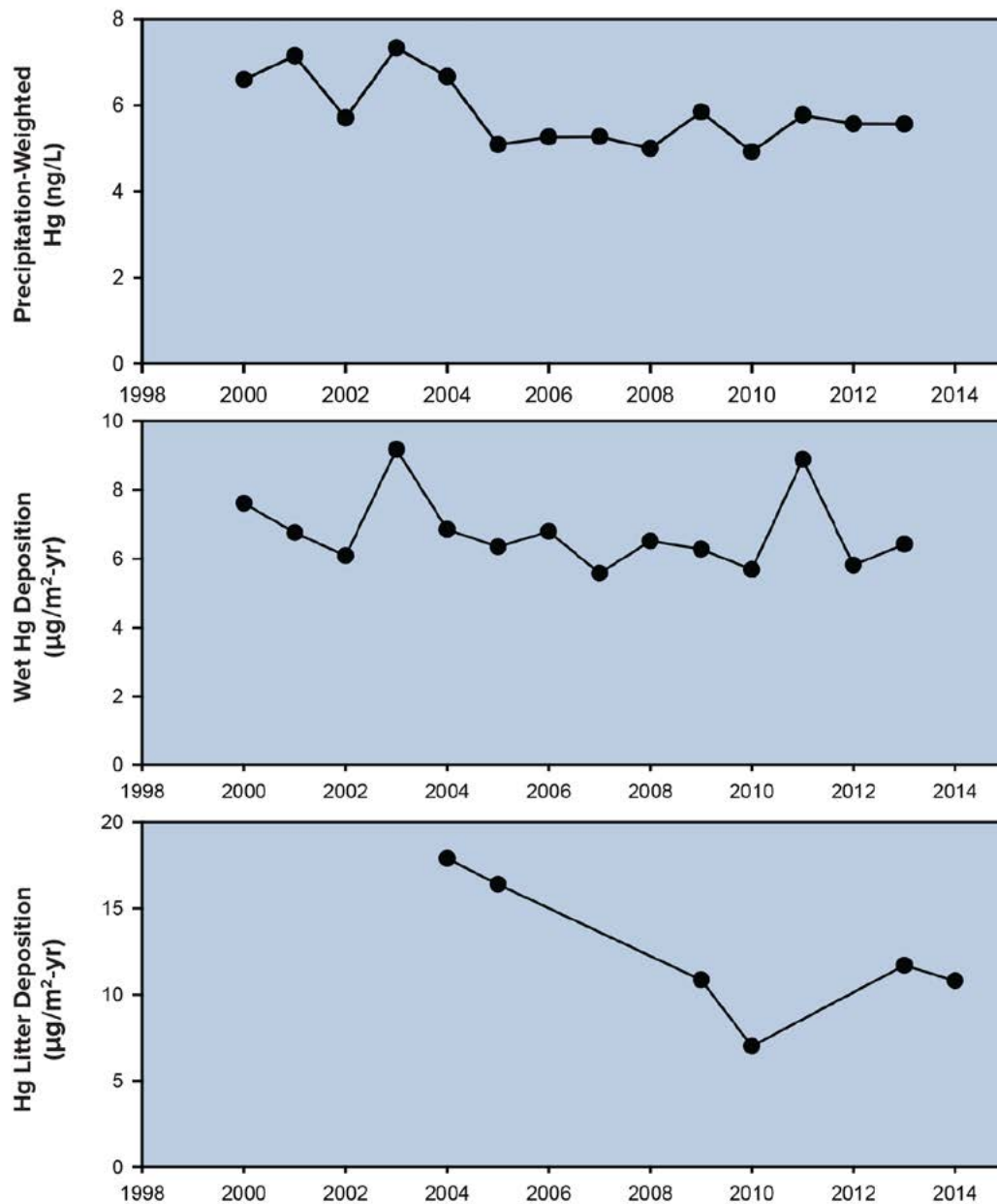
Marked decreases in the atmospheric deposition of some pollutants, including nitrate and sulfate associated with “acid rain,” have been observed at the Huntington NADP/NTN site (Figure 2.) Such changes are consistent with similar changes throughout the Northeast U.S. In June 2012, the HF joined the AMoN network and has experienced average air concentrations of $0.36 \mu\text{g NH}_3 \text{ m}^{-3}$ (SD=0.19) through January 2015. This mean concentration is substantially less than the mean annual concentrations often found at AMoN sites (<http://nadp.sws.uiuc.edu/AMoN/>) strongly affected by agricultural activities ($>2 \mu\text{g NH}_3 \text{ m}^{-3}$).

Figure 2. Huntington Forest Wet Only Deposition



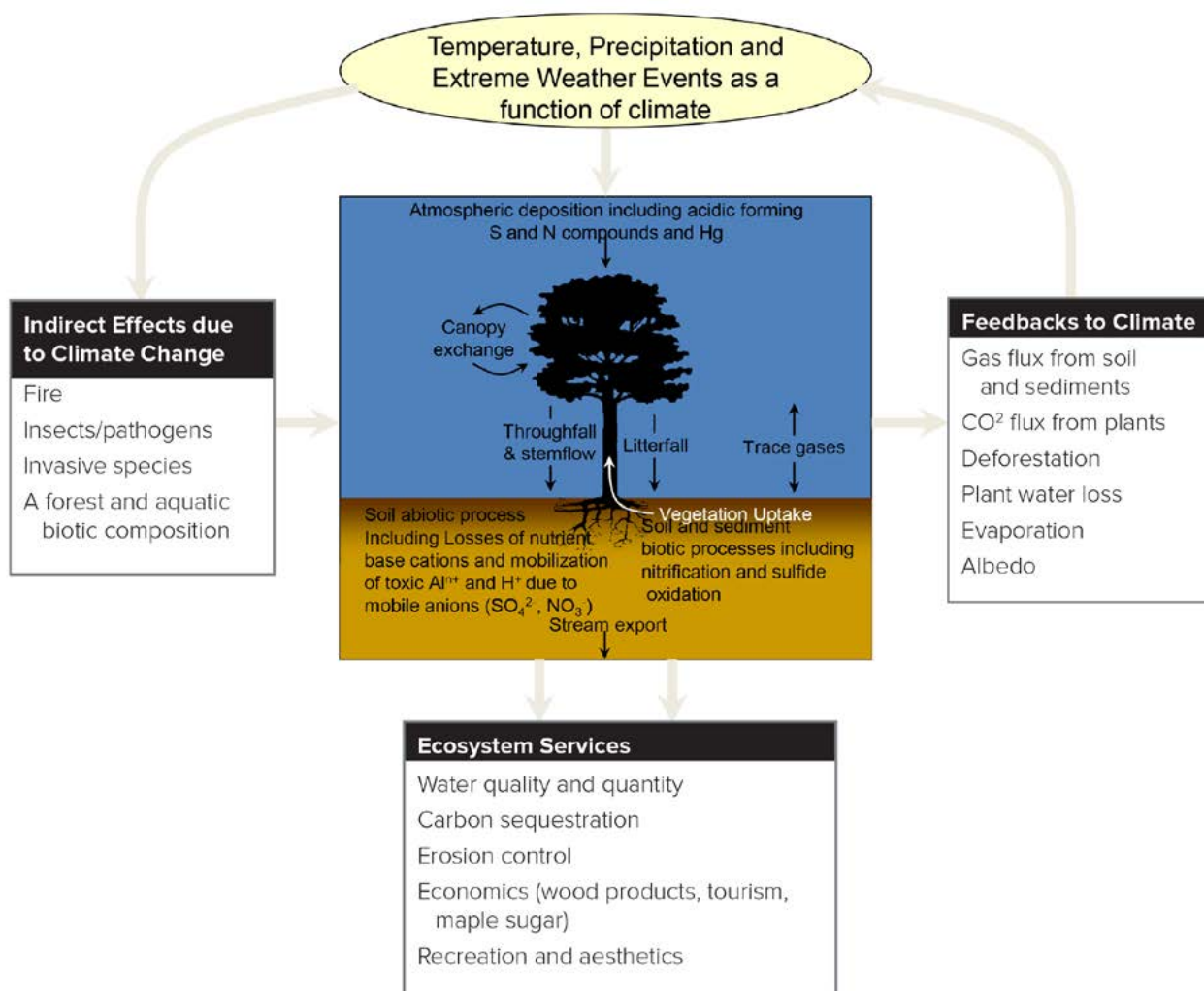
Wet only monitoring of mercury has shown no significant trends in total mercury concentrations or deposition since measurements were initiated in 2000 (Figure 3). Litterfall mercury is thought to be an estimate of dry mercury deposition in forest ecosystems. The combination of wet only mercury inputs plus litter mercury is considered an estimate of total mercury deposition. Using previous measurements of litter mercury for Huntington, there is an extended record of litter mercury deposition. In contrast to the consistent record of wet mercury deposition, it appears that litter mercury may be decreasing. This pattern of decrease in litter mercury deposition appears to be consistent with measurements of declining elemental mercury in the North Atlantic region. As litter mercury is derived from atmospheric elemental mercury, this pattern may reflect decreases in atmospheric mercury deposition to the region.

Figure 3. Time-series of annual volumeweighted concentrations in precipitation, wet deposition of total mercury and litter mercury deposition at Huntington Forest



The extensive monitoring of atmospheric deposition, meteorology, water chemistry and hydrology at the HF/Arbutus Watershed has resulted in various studies that have evaluated a wide spectrum of environmental effects in the Adirondacks. For example, it has been demonstrated that the spring snowmelt period is responsible for a large proportion of nitrate being exported to surface waters (e.g. Kurian et al. 2013; Park et al. 2005). The infrastructure within the HF/Arbutus watershed has served as a basic platform to evaluate a broad range of environmental issues to the region. For example, work on two sub-catchments of the Arbutus Watershed has shown the importance of nutrient (including calcium) availability in altering the forest vegetation and biotic recycling processes that are critical for forest health (Page et al. 2008). The effect of calcium availability is a key factor in the health of important tree species, especially sugar maple. Calcium availability has also been shown to influence the forest fauna (Beier et al. 2012). Research at the HF/Arbutus watershed has shown there are important interactions among climate change, atmospheric deposition, surface water chemistry landscape components (Kang and Mitchell, 2013; Vidon et al. 2014) and the emission of trace gases that contribute to global warming. These factors, as summarized in Figure 4, need to be evaluated concomitantly to understand how current and future environmental factors are affecting environmental health not only for the Adirondacks but for other regions of North America and the World.

Figure 4. Interactions between acidic deposition and climate change in affecting forested watersheds including other extrinsic factors important for forest ecosystem process such as ecosystem services



We expect the HF/Arbutus Watershed will continue to serve as the premier monitoring site for the Adirondacks. The detailed information available at the HF/Arbutus Watershed has been extrapolated and used in the evaluation of environmental patterns throughout the Adirondacks including changing patterns of climate (Ito et al. 2002), nitrogen budgets (Ito et al. 2005) and sulfur budgets (Mitchell et al. 2013). The HF/Arbutus watershed has also been used extensively in regional comparisons with particular focus on the Northeast U.S. and Southeast Canada (Campbell et al. 2009; Kerr et al. 2012; Mitchell et al. 2011). The HF/Arbutus watershed is also part of the PhenoCam network (Figure 5). The PhenoCam Network was developed to provide automated, near-surface remote sensing of canopy phenology across the Northeast United States and Southeast Canada (<http://phenocam.sr.unh.edu/webcam/>).

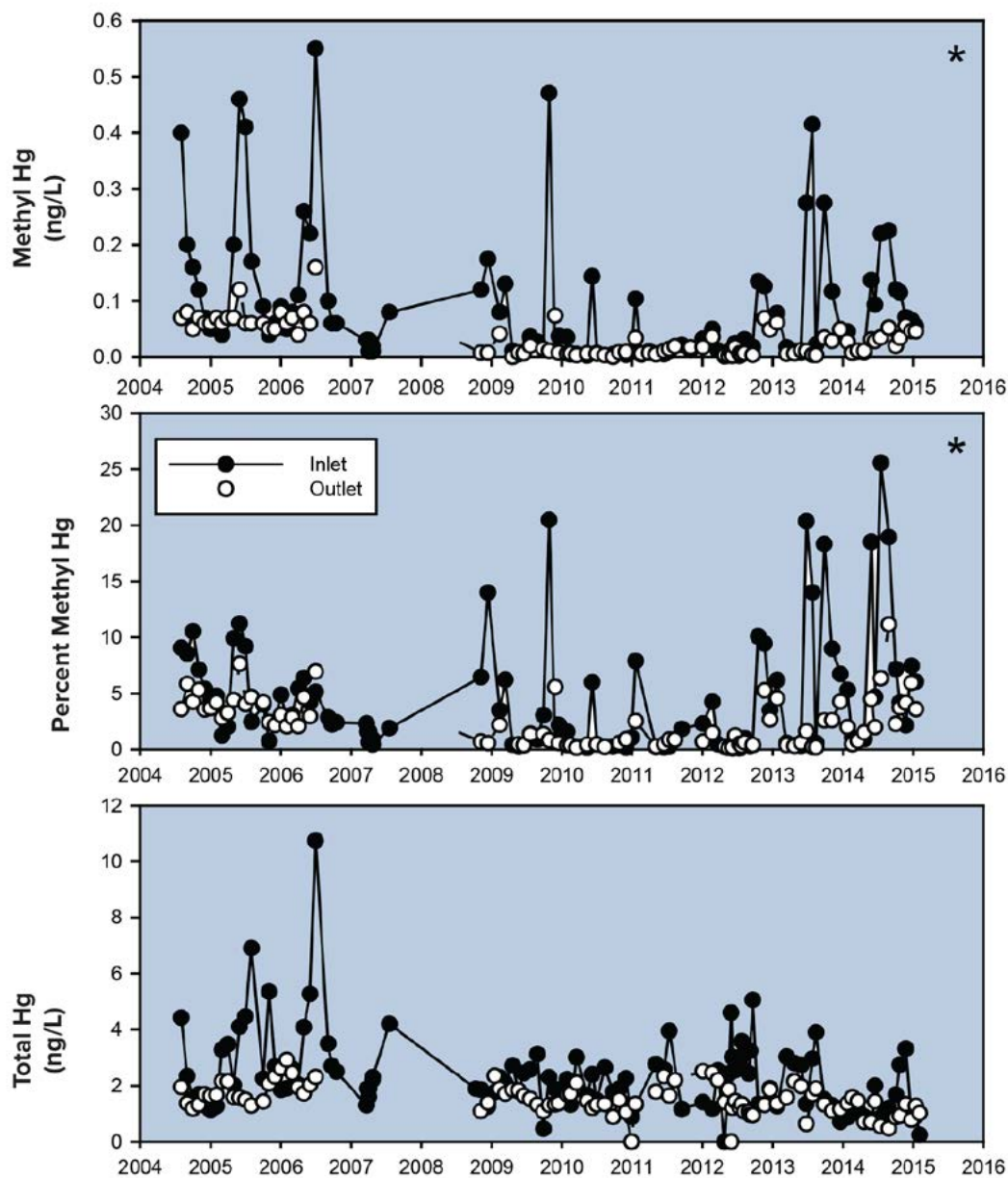
The HF/Arbutus Watershed has been utilized in the comparison of environmental impacts of air pollution and climate effects for sites on a global basis (Mitchell 2011; Shibata et al. 2015; Watmough et al. 2005). These local and regional analyses are used in developing legislation and rules for wide range of air pollutants including the impact of carbon dioxide on climate change (<http://www3.epa.gov/climatechange/EPAactivities/regulatory-initiatives.html>)

Figure 5. Overview of Arbutus Watershed from one of the cameras used in the PhenoCam Network



In addition to mercury deposition measurements, concentrations of total and methyl mercury have been measured in the inlet and outlet of Arbutus Lake. Between 2004 and 2015, the inlet and outlet of Arbutus Lake had statistically significant differences in mercury concentrations (Figure 6). Average concentrations of total mercury and methylmercury were higher at the inlet (2.35 ng/L for total mercury, 0.086 µg/L for methylmercury) compared to the outlet (1.54 ng/L for methylmercury, 0.032 µg/L for total mercury). Consequently, the percentage of mercury occurring as methylmercury was higher at the inlet (4.4%) compared to the outlet (2.4%). Time-series analysis shows that there have been significant decrease in the concentrations of total mercury in the lake outlet and of methyl mercury in the inlet and outlet. Methylmercury and total mercury fluxes for Arbutus Lake were also greater at the inlet (0.06 µg/m² – yr) for methylmercury, 1.89 µg/m² – yr) for total mercury) compared to the outlet (0.02 µg/m² – yr)

Figure 6. Time-series of concentrations of methylmercury, the percent of total mercury as methyl mercury and total mercury in the inlet and outlet of Arbutus Lake at Huntington Forest



for methylmercury, $1.03 \mu\text{g}/\text{m}^2\text{-yr}$) for total mercury) (Figure 7). Based on this mass balance, the lake is retaining inputs of total mercury and methylmercury with an average of 60.3% total mercury and 57.6% methylmercury retained. A time-series analysis of indicates significant decreases in the fluxes of total mercury and methyl mercury in the lake inlet, but not the lake outlet over the monitoring period. These patterns may suggest that the lake-watershed system is responding to decreases in mercury deposition.

The New York State Department of Environmental Conservation has listed 128 lakes in the Adirondacks as impaired due to elevated acidity. Investigation of acid deposition and surface water chemistry help to inform the recovery of surface waters from acidification effects. Mercury contamination is a critical and dynamic environmental issue in New York State and globally. Exposure to mercury largely occurs through consumption of fish. There are currently 104 fish consumption advisories due to mercury for specific waters in New York, many of these are in the Adirondacks. For most Adirondacks watersheds, atmospheric deposition dominates mercury inputs. This monitoring program helps inform changes in atmospheric mercury deposition and changes in watershed and lake response to these changes. Long-term meteorological and atmospheric deposition measurements provides valuable information that is used as input to hydrochemical models to project the response of Adirondack watersheds to changes in acid deposition and climate change.

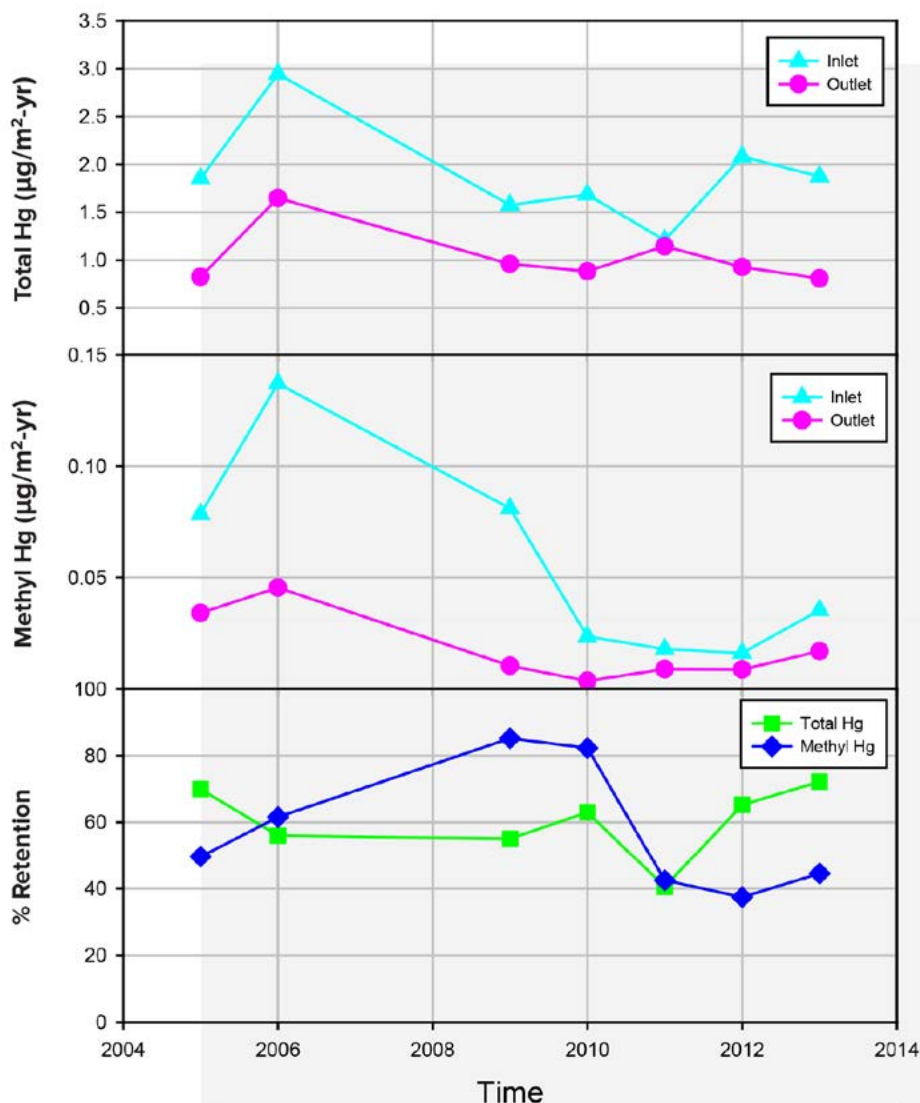


Figure 7. Time-series of fluxes of methylmercury and total mercury in the inlet and outlet of Arbutus Lake at Huntington Forest

**Tower at Ackerman Clearing,
upper Arbutus watershed**

Credit: Patrick McHale



**Instrumentation cabin at
the Adirondack Ecological
Center's NTN site (NY20)**

Credit: Patrick McHale



REFERENCES

- Beier, C.M., Woods, A.M., Hotopp, K.P., Gibbs, J.P., Mitchell, M.J., Dovèiak, D., Leopold, D.J., Lawrence, G.B., and Page, B.D. 2012. Variability in gastropod and amphibian communities along a soil calcium gradient in Adirondack northern hardwood forests. *Canadian Journal of Forest Research* 42: 1141-1152.
- Campbell, J.L., L.E. Rustad, E.W. Boyer, S. F. Christopher, C. T. Driscoll, I.J. Fernandez, P.M. Groffman, D. Houle, J. Kiekbusch, A.H. Magill, M.J. Mitchell, and S.V. Ollinger. 2009. Consequences of climate change for biogeochemical cycling in forests of northeastern North America. *Canadian Journal of Forest Research* 39:264-284.
- Ito, M., M.J. Mitchell and C.T. Driscoll. 2002. Spatial patterns of precipitation quantity and chemistry and air temperature in the Adirondack Region of New York. *Atmospheric Environment* 36:1051-1062.
- Ito, M., M.J. Mitchell, C.T. Driscoll and K.M. Roy. 2005. Nitrogen input-output budgets for lake-watersheds in the Adirondack region of New York. *Biogeochemistry*. 72:283-314.
- Kang, P.G. and M.J. Mitchell. 2013. Bioavailability and size-fraction of dissolved organic carbon, nitrogen, and sulfur at the Arbutus Lake watershed, Adirondack Mountains, NY. *Biogeochemistry*. 115: 213-234.
- Kerr, J.G., M. C. Eimers, I. F. Creed, M. B. Adams, F. Beall, D. Burns, J. L. Campbell, S. F. Christopher, T. A. Clair , F. Courchesne, L. Duchesne, I. Fernandez, D. Houle, D. S. Jeffries, G. E. Likens, M. J. Mitchell, J. Shanley and H. Yao. 2012. The effect of seasonal drying on sulphate dynamics in streams across southeastern Canada and the northeastern USA. *Biogeochemistry* 111:393–409 DOI 10.1007/s10533-011-9664-1.
- Kurian, L.M., L. K. Lautz and M. J. Mitchell. 2013. Winter hydrology and concentrations in a forested watershed: a detailed field study in the Adirondack Mountains of New York. *Journal of the American Water Resources Association* 49: 264–283.
- Mitchell, M.J., C.T. Driscoll, P.J. McHale, K. M. Roy and Zheng Dong. 2013. Lake-Watershed Sulfur Budgets and Their Response to Decreases in Atmospheric Sulfur Deposition: Watershed and Climate Controls. *Hydrological Processes*. 27:710-720. DOI: 10.1002
- Mitchell, M.J. 2011. Nitrate Dynamics of Forested Watersheds: Spatial and Temporal Patterns in North America, Europe and Japan. *Journal of Forest Research* 16:333-340.
- Mitchell, M.J., G. Lovett, S. Bailey, F. Beall, D. Burns, D. Buso. T. A. Clair, F. Courchesne, L. Duchesne, C. Eimers, D. Jeffries , S. Kahl, G. Likens, M.D. Moran, C. Rogers, D. Schwede, J. Shanley, K. Weathers and R. Vet. 2011. Comparisons of Watershed Sulfur Budgets in Southeast Canada and Northeast US: New Approaches and Implications. *Biogeochemistry*103:181-207.
- Page, B.D., T.D. Bullen and M.J. Mitchell. 2008. Influences of calcium availability and tree species on the cycling of Ca isotopes in soil, vegetation, and stream water. *Biogeochemistry* 88:1–13
- Park, J., M.J. Mitchell, C.T. Driscoll. 2005. Winter-time climatic control on dissolved organic carbon export and surface water chemistry in an Adirondack forested watershed. *Environmental Science and Technology* 39: 6993-6998.
- Shibata, H., Branquinho, C., McDowell, W.H., Mitchell, M.J., Monteith, D.T., Tang, J., Arvola, L., Cruz, C., Cusack, D.F. Halada, L., Kopacek, J., Máguas, C., Sajidu, S., Schubert, H., Tokuchi, N., Záhora, J. 2015. Consequence of altered nitrogen cycles in the coupled human and ecological system under changing climate: the need for long-term and site-based research. DOI 10.1007/s13280-014-0545-4 *AMBIO* 44:178-193.
- Vidon, P., Carleton W., Mitchell, M. J. 2014. Spatial and temporal variability in stream dissolved organic carbon quantity and quality in an Adirondack Forested Catchment . *Applied Geochemistry* 46:10-18.
- Watmough, S.A., J. Aherne, C. Alewell, P. Arp, S. Bailey, T. Clair, P. Dillon, L. Duschesne, C. Eimers, I. Fernandez, N. Foster, T. Larsson, E. Miller, M. Mitchell and S. Page. 2005. Sulphate, nitrogen and base cation budgets at 21 forested catchments in Canada, the United States and Europe. *Environmental Monitoring and Assessment* 109:1-36.

NYSERDA, a public benefit corporation, offers objective information and analysis, innovative programs, technical expertise, and support to help New Yorkers increase energy efficiency, save money, use renewable energy, and reduce reliance on fossil fuels. NYSERDA professionals work to protect the environment and create clean-energy jobs. NYSERDA has been developing partnerships to advance innovative energy solutions in New York State since 1975.

To learn more about NYSERDA's programs and funding opportunities, visit nyserdera.ny.gov or follow us on Twitter, Facebook, YouTube, or Instagram.

**New York State
Energy Research and
Development Authority**

17 Columbia Circle
Albany, NY 12203-6399

toll free: 866-NYSERDA
local: 518-862-1090
fax: 518-862-1091

info@nyserdera.ny.gov
nyserdera.ny.gov



NYSERDA

State of New York

Andrew M. Cuomo, Governor

New York State Energy Research and Development Authority

Richard L. Kauffman, Chair | John B. Rhodes, President and CEO

