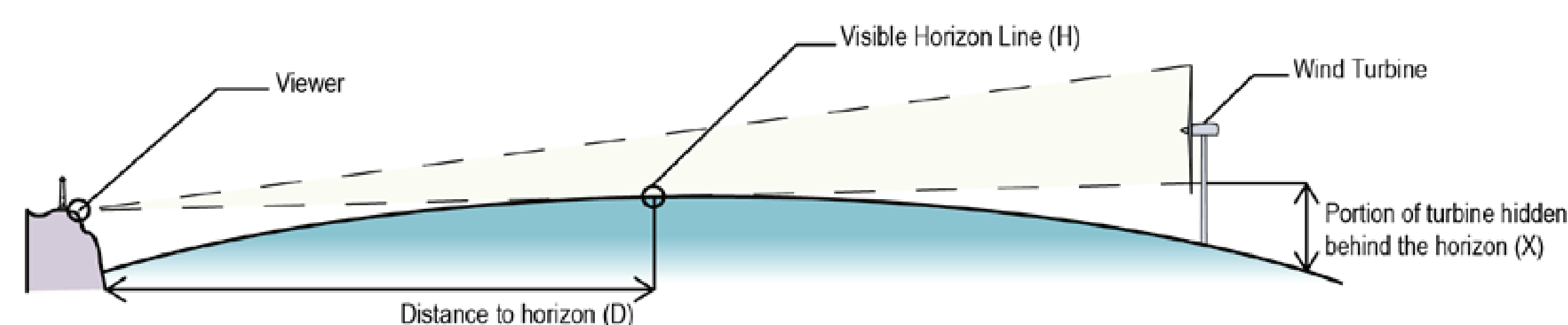
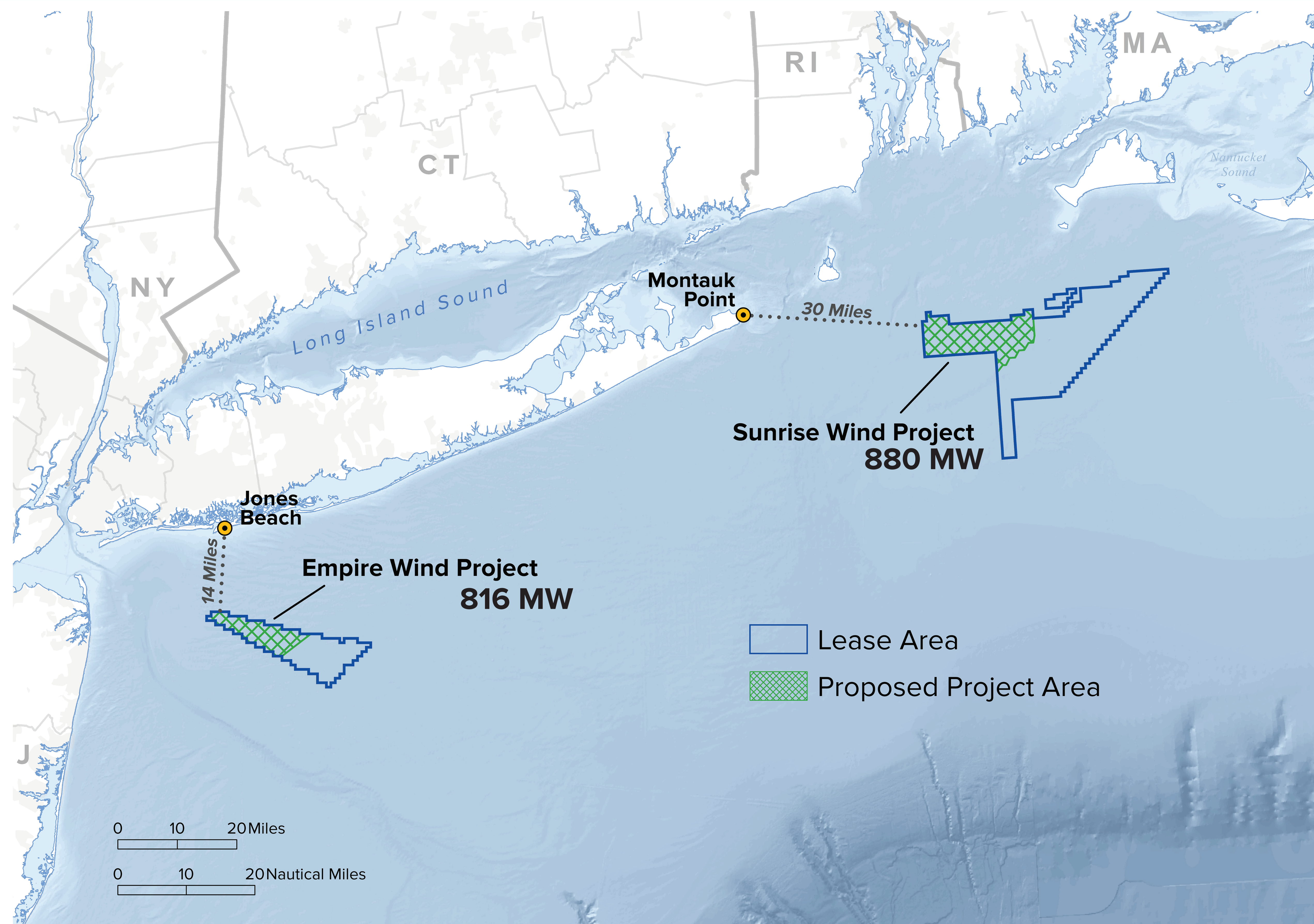


Project Distances and Visibility

Minimizing visual impacts from offshore wind energy is a priority for New York State and was included as a contract requirement in the State's first solicitation for offshore wind. Visibility of offshore wind turbines depends on many factors, including distance from shore, viewer elevation, time of day, weather conditions, the angle of the sun, and seasonal variation.



- When located many miles from shore, offshore wind turbines may not be visible due to the curvature of the Earth
- Turbine visibility is also impacted by weather and lighting conditions
- Turbines may be blocked from view by maritime traffic and common anchorages



For the Empire Wind project, use the “rule of thumb”: If you extend your arm fully to the horizon and raise your thumb, the approximate size of the closest turbines, visible under clear conditions, will be less than a quarter of the size of your thumbnail. The Sunrise Wind project will not be visible from the New York shoreline.