

Hudson North Study Area: Subarea A Geophysical Survey Interpretive Report

Final Report | Report Number 21-08 | March 2021

NYSERDA's Promise to New Yorkers:

NYSERDA provides resources, expertise, and objective information so New Yorkers can make confident, informed energy decisions.

Our Vision:

New York is a global climate leader building a healthier future with thriving communities; homes and businesses powered by clean energy; and economic opportunities accessible to all New Yorkers.

Our Mission:

Advance clean energy innovation and investments to combat climate change, improving the health, resiliency, and prosperity of New Yorkers and delivering benefits equitably to all.

Hudson North Study Area (Subarea A) Geophysical Survey Interpretative Report

Report (Final)

Prepared for:

New York State Energy Research and Development Authority

New York, NY

Prepared by:

Gardline Limited

Great Yarmouth, Norfolk, UK



Report Authorization and Distribution

Compilation	Geophysics		A Wuestner
	Surveying		T Stynes
Authorization	Checked		M Kingston
	Approved		D I Gordon
Revision	Date	Title	Description
0	12-01-2020	Draft	Draft report for client review
1	01-10-2021	2 nd Draft	2 nd Draft report for client review
2	02-04-2021	2 nd Version	2 nd Version report for client review
3	02-19-2021	3 rd Version	3 rd Version report
4	03-26-2021	Final	Final Report
Distribution			
1 copy			
WSP USA 368 Pleasant View Drive Lancaster NY 14086			
For attention of: Steven MacLeod			

Report Volumes

Reporting for the project has been subdivided into ten volumes.

Report	Report Number	Volume
Field Report – Geophysical Operations <i>[Available on Request]</i>	11506.1	1
Operations Report – Geophysical Operations <i>[Available on Request]</i>	11506.2	2
Hudson South Study Area Geophysical Survey Interpretive Report	11506.3	3
Hudson North Study Area (Subarea A) Geophysical Survey Interpretive Report	11506.4	4
Hudson North Study Area (Subarea B) Geophysical Survey Interpretive Report	11506.5	5
Protected Species Observer Report <i>[Available on Request]</i>	11506.6	6
Geotechnical Location Memo <i>[Available on Request]</i>	11506.7	7
Hudson South Study Area Ground Model Report <i>[Available on Request]</i>	11506.8	8
Hudson North Study Area (Subarea A) Ground Model Report <i>[Available on Request]</i>	11506.9	9
Hudson North Study Area (Subarea B) Ground Model Report <i>[Available on Request]</i>	11506.10	10

This report is the Geophysical Survey Interpretive Report for the Hudson North Study Area (Subarea A) data.

Notice

This report was prepared by Gardline Limited in the course of performing work contracted for and sponsored by the New York State Energy Research and Development Authority (hereafter “NYSERDA”). The opinions expressed in this report do not necessarily reflect those of NYSERDA or the State of New York, and reference to any specific product, service, process, or method does not constitute an implied or expressed recommendation or endorsement of it. Further, NYSERDA, the State of New York, and the contractor make no warranties or representations, expressed or implied, as to the fitness for particular purpose or merchantability of any product, apparatus, or service, or the usefulness, completeness, or accuracy of any processes, methods, or other information contained, described, disclosed, or referred to in this report. NYSERDA, the State of New York, and the contractor make no representation that the use of any product, apparatus, process, method, or other information will not infringe privately owned rights and will assume no liability for any loss, injury, or damage resulting from, or occurring in connection with, the use of information contained, described, disclosed, or referred to in this report.

NYSERDA makes every effort to provide accurate information about copyright owners and related matters in the reports we publish. Contractors are responsible for determining and satisfying copyright or other use restrictions regarding the content of reports that they write, in compliance with NYSERDA’s policies and federal law. If you are the copyright owner and believe a NYSERDA report has not properly attributed your work to you or has used it without permission, please email print@nyserda.ny.gov

Information contained in this document, such as web page addresses, are current at the time of publication.

Use of this Report

This report has been prepared with due care and diligence and with the skill reasonably expected of a reputable contractor experienced in the types of work carried out under the contract, and as such, the findings in this report are based on an interpretation of data. In essence, an interpretation is a matter of opinion on which professionals may differ and, unless clearly stated in the report, is not a recommendation of any course of action.

Gardline Limited has prepared this report for the client(s) identified on the front cover in fulfilment of its contractual obligations under the contract and the only liabilities Gardline Limited accept are those contained therein.

Please be aware that further distribution of this report, in whole or part, or the use of the data for a purpose not expressly stated within the contractual work scope is at the client's sole risk and Gardline Limited recommends that this disclaimer be included in any such distribution.

Abstract

Gardline Limited carried out a reconnaissance level Geophysical Site Investigation of the seabed and subsurface geology in the Hudson North Study Area (Subarea A). The goal of the investigation was to obtain high-quality data sufficient for reducing lease holder uncertainty at the time of offtake and helping to advance the design and installation requirements for offshore wind farm facilities in the study area. The survey collected multibeam echosounder, side scan sonar, and gradiometer data to assess the seabed, and sub-bottom profiler and multi-channel ultra-high resolution seismic data to assess subsurface conditions. In total, the survey consisted of 26 lines over a total of 203-line kilometers.

The seabed contains ripples across the study area. Occasional sonar contacts at the seabed were interpreted as debris and/or possible boulders. The subsurface geology is complex. The uppermost formation is a layer of Holocene sediments consisting predominantly of sand and gravelly sand. These sediments are underlain by the Pleistocene Sediment Wedge that is expected to consist of predominantly clay-rich sediments but also contains complex channel systems. The underlying Pleistocene Succession is characterized by numerous dipping reflectors comprising predominantly sand and clay. Finally, this formation is underlain by the Coastal Plain Deposits that are expected to consist of nearly lithified, predominantly coarse to medium sand with occasional gravel, and possible organic matter.

Further geological site characterizations should include geotechnical testing, considering the presence of Pleistocene channel deposits that are expected to be highly variable in spatial extent, thickness, and grain size composition.

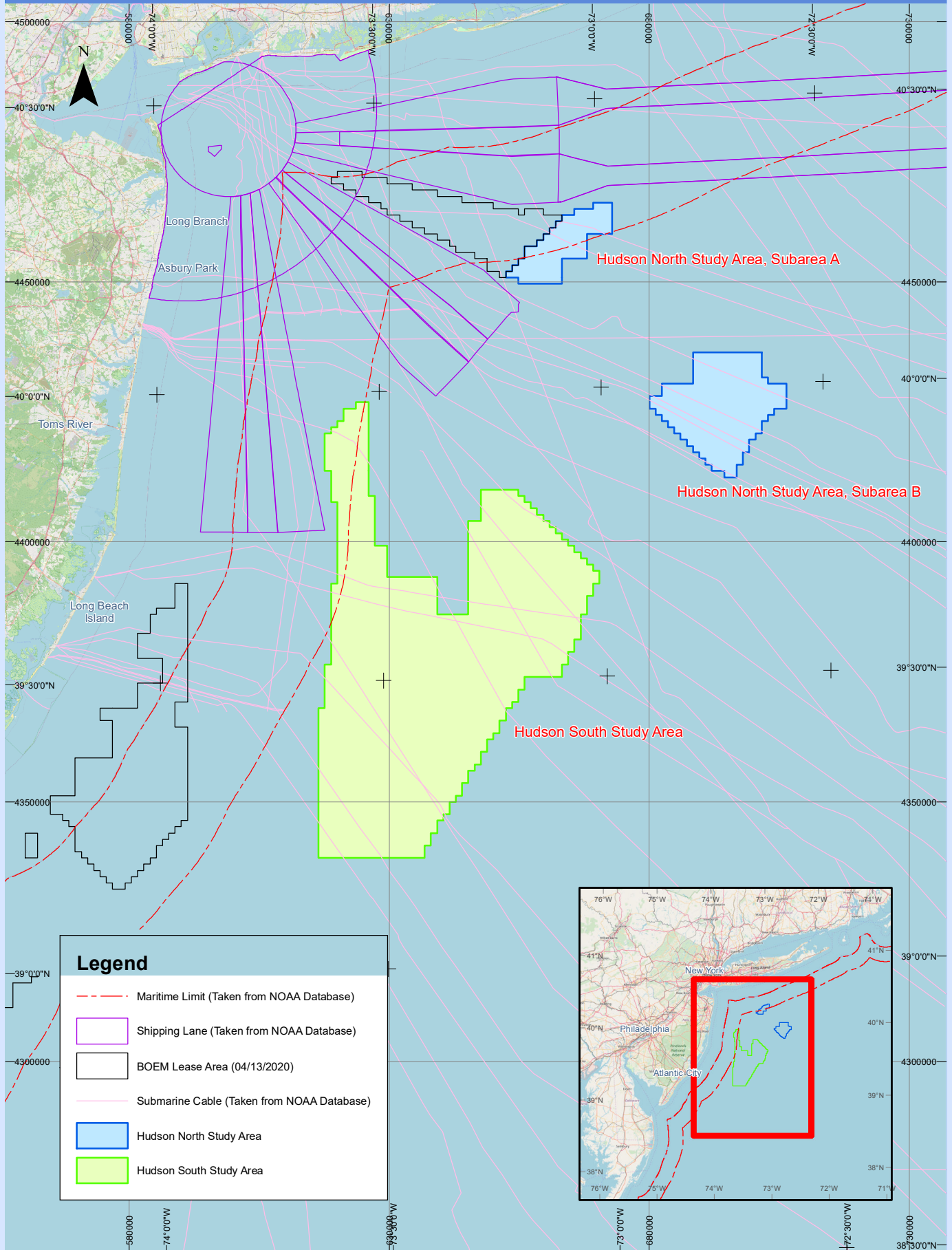
Keywords

New York State, middle continental shelf, geophysical survey, sediment, seabed, subsurface geology

Location Map

Scale 1 : 1 000 000
NAD83/UTM Zone 18N (75°W)

LOCATION MAP



Legend

- Maritime Limit (Taken from NOAA Database)
- Shipping Lane (Taken from NOAA Database)
- BOEM Lease Area (04/13/2020)
- Submarine Cable (Taken from NOAA Database)
- Hudson North Study Area
- Hudson South Study Area

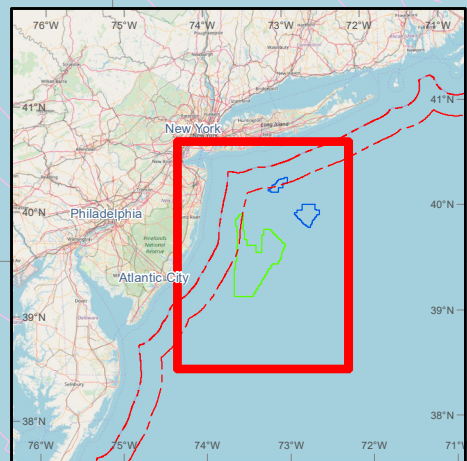


Table of Contents

Report Authorization and Distribution	i
Report Volumes	ii
Notice.....	iii
Use of this Report.....	iv
Abstract.....	iv
Keywords.....	v
Location Map.....	vi
List of Figures	ix
List of Tables.....	x
List of Charts.....	xi
Acronyms and Abbreviations	xi
Executive Summary.....	ES-1
1 Project Summary	1
1.1 Scope of Work.....	1
1.2 Study Area Description.....	2
1.3 Fieldwork Summary.....	4
1.4 Field Personnel	4
1.5 Summary of Survey Activities	6
1.6 Equipment List	7
2 Data Processing and Analysis.....	8
2.1 Geophysical Data Processing and Analysis	8
2.1.1 Navigation	8
2.1.2 Navigation Online Quality Assurance and Processing Flow	9
2.1.3 Navigation Data Deliverables (Track Plots)	11
2.1.4 Track Plots Office Quality Control	11
2.2 Bathymetry.....	11
2.2.1 Multibeam Echosounder Processing Steps	13
2.2.1.1 Position and Altitude Data.....	13
2.2.1.2 Sound Velocity Profile	13
2.2.1.3 Depth Processing	16
2.2.1.4 Gridding and Quality Control.....	16
2.2.1.5 Total Propagated Uncertainty	16

2.2.1.6	Backscatter	16
2.2.2	Multibeam Echosounder Office Quality Assurance	17
2.2.3	Multibeam Echosounder Coverage and Quality	17
2.3	Tidal Information	20
2.3.1	Separation Model	20
2.3.2	Deriving Tidal Heights	20
2.4	Side Scan Sonar	21
2.4.1	Side Scan Sonar Offshore QA and Data Processing	21
2.4.2	Side Scan Sonar Mosaic Creation	25
2.4.3	Side Scan Sonar Office QA	25
2.4.4	Side Scan Sonar Coverage and Quality	25
2.4.5	Resolution and Limitations	26
2.5	Gradiometer	29
2.5.1	Gradiometer Data Processing	29
2.5.2	Gradiometer Office QA	30
2.5.3	Gradiometer Coverage and Quality	30
2.6	Sub-Bottom Profiler	33
2.6.1	Sub-Bottom Profiler Offshore QA	33
2.6.2	Vertical Datum and Heave Adjustment	33
2.6.3	Sub-Bottom Profiler Analysis	33
2.6.4	Sub-Bottom Profiler Coverage and Quality	33
2.6.5	Resolution and Limitations	34
2.7	Multi-Channel Ultra-High Resolution Seismic	36
2.7.1	Acquisition QA Sequence	36
2.7.2	Summary of Seismic Processing Report	36
2.7.3	Multi-Channel UHRS Coverage and Quality	37
2.8	Interpretation Criteria	39
2.8.1	Side Scan Sonar Contact Picking Criteria	39
2.8.2	Gradiometer Anomaly Picking Criteria	39
2.8.3	Correlated Contact Picking Criteria	40
2.8.4	Seabed Sediments and Morphological Interpretation	40
2.8.5	Horizon Picking Criteria	40
3	Data Interpretation	43
3.1	Geological Setting Overview	45
3.1.1	Subsurface Geology	45

3.1.1.1 Pre-Pleistocene	46
3.1.1.2 Pleistocene.....	46
3.1.1.3 Holocene.....	48
3.1.2 Seabed Features.....	49
3.2 Geophysical Survey Results.....	51
3.2.1 Bathymetry.....	51
3.2.2 Seabed Features.....	51
3.2.3 Subsurface Geology	58
3.3 Geohazards	70
3.3.1 Natural Seafloor Hazards.....	70
3.3.2 Anthropogenic Hazards	72
3.3.3 Subsurface Hazards	73
4 Results and Conclusions	75
5 References	77
Appendix A. Geodetic Reference System	A-1
Appendix B. Survey Line List.....	B-1
Appendix C. Data Deliverables.....	C-1
Appendix D. Sonar Contact Listing Report	D-1
Appendix E. Gradiometer Anomaly Listing.....	E-1
Appendix F. Chart Listing.....	F-1

List of Figures

Figure 1. Hudson North Study Area (Subarea A) Survey Grid	3
Figure 2. Field Activity Summary.....	6
Figure 3. Example of a Statistical Time Series Comparison	10
Figure 4. MBES Processing Flow.....	12
Figure 5. Sound Velocity Profile Comparison	15
Figure 6. Hudson North Study Area (Subarea A) MBES Total Vertical Uncertainty Histogram ..	19
Figure 7. NOAA VDatum Model and Study Areas	20
Figure 8. Illustrating Raw and Processed SSS Data.....	23
Figure 9. Illustrating SSS Positioning Confidence	24
Figure 10. Illustrating SSS Cable Snatching Effects	27
Figure 11. Illustrating Thermocline Effect on SSS Data.....	28
Figure 12. Illustrating Spiking on Gradiometer Array from the Sparker Source.....	31
Figure 13. Illustrating Geological Influence on Gradiometer Data.....	32

Figure 14. Illustrating Weather Effects on the SBP Data Quality	35
Figure 15. Illustrating MUHRS Data Quality	38
Figure 16. Illustrating SBP and MUHRS Data Resolution.....	41
Figure 17. Illustrating the Location of Data Examples within Section 3.....	44
Figure 18. Schematic Illustrating Subsurface Geological Setting within the Hudson Bight.....	46
Figure 19. Illustrating the Formation of Buried Channel Networks	48
Figure 20. Illustrating Extract of SSS Mosaic	54
Figure 21. Illustrating Trawl Scars in SSS and MBES Data	55
Figure 22. Gradiometer Cable Overview	56
Figure 23. Illustrating Debris Item in SSS and MBES Data.....	57
Figure 24. Schematic Diagram Illustrating the Interpreted Geological Sequence at the Hudson North Study Area (Subarea A).....	65
Figure 25. Illustrating Holocene Sediments in SBP Data.....	66
Figure 26. Illustrating High Amplitudes in the Shallow Pleistocene Channeled Units in MUHRS Data.....	67
Figure 27. Illustrating the Large Complex Channel Horizon H15 in MUHRS Data	68
Figure 28. Illustrating the Deeper Pleistocene Units and the Top of the Coastal Plain Deposits in MUHRS Data	69

List of Tables

Table 1. Fieldwork Summary.....	4
Table 2. Key Field Personnel Duties	5
Table 3. Onshore Personnel	5
Table 4. Survey Equipment.....	7
Table 5. Sonardyne Ranger 2 USBL System Error Estimate.....	9
Table 6. Sound Velocity Profile Details.....	13
Table 7. Geological Sequence	45
Table 8. Cable Crossings.....	53
Table 9. Summary of Interpreted Horizons Throughout the Study Area.....	62
Table 10. Natural Seafloor Hazards	70
Table 11. Anthropogenic Hazards	72
Table 12. Subsurface Hazards.....	73

List of Charts

The following charts have been provided to accompany this report and are provided under a separate cover. Within each series the Hudson North Study Area (Subarea A) is covered by five charts.

All plan view charts are presented at a scale of 1:10,000. Profile charts provided in Series Q have been scaled on a line-by-line basis to best display the data.

A single overview chart has been provided 11506.4_Drwg_Overview at a scale of 1:30,000.

A	A_11506.4_Drwg*A_Ref_Trk	Reference point track
B	A_11506.4_Drwg*B_MBES_Trk	Multibeam echosounder track
C	A_11506.4_Drwg*C_SSS_Trk	Side scan sonar track
D	A_11506.4_Drwg*D_Grad_Trk	Gradiometer track
E	A_11506.4_Drwg*E_SBP_Trk	Sub-bottom profiler track
F	A_11506.4_Drwg*F_UHRS_Trk	Shot point track (UHRS) – First CMP Position
G	A_11506.4_Drwg*G_Bathymetry	Bathymetry
H	A_11506.4_Drwg*H_Backscatter	Backscatter
I	A_11506.4_Drwg*I_Gradient	Seabed gradient
J	A_11506.4_Drwg*J_Features	Seabed features
K	A_11506.4_Drwg*K_Mosaic	Side scan sonar mosaic
L	A_11506.4_Drwg*L_Residual	Magnetometer residual grid
M	A_11506.4_Drwg*M_Sediments1	H05 base Holocene Sediments
N	A_11506.4_Drwg*N_Sediments2	H15 base complex channel system
O	A_11506.4_Drwg*O_Sediments3	H50 top Coastal Plain Deposits
P	A_11506.4_Drwg*P_SubFeatures	Subsurface features
Q	A_11506.4_Drwg*Q_Profile	Interpreted geological profiles

Acronyms and Abbreviations

2DRMS	Twice Distance Root Mean Square
2D UHRS	Two-Dimensional Ultra-High Resolution Seismic
AS	Analytical Signal
ASCII	American Standard Code for Information Interchange
ASV	Assumed Seismic Velocity
AVG	Angle Varying Gain
BASE	Bathymetry Associated with Statistical Error
BOEM	Bureau of Ocean Energy Management
BSB	Below Seabed
C	Celsius(°)
Cm	Centimeter(s)
CMP	Common Mid-Point

CoG	Center of Gravity
dB	Decibel(s)
deg	Degree(s)
DTM	Digital Terrain Model
DTU	Danish Technical University
EdAnN	Editing and Analysis
EPSG	European Petroleum Survey Group
FD	Finite Difference
FK	Frequency and Wave Number Domain
GIS	Geographic Information System
(D)GNSS	(Differential) Global Navigation Satellite System
GRS80	Geodetic Reference System 1980
h	Hours (times expressed hh:mmh e.g. 12:45h)
H	Height
HPQC	High Performance Quality Control
HSE	Health, Safety and Environment
IHO	International Hydrography Organization
ITRF	International Terrestrial Reference Frame
(k)J	(Kilo)Joule(s)
(k)Hz	(Kilo)Hertz
km	Kilometer(s)
kts	Knots
m	Meter(s)
MBES	Multibeam Echosounder
MLLW	Mean Lower Low Water
MRU	Motion Reference Unit
ms	Millisecond(s)
m/s	Meters per Second
MUHRS	Multi-Channel Ultra-High Resolution Seismic
M.V.	Motor Vessel
MVP	Moving Vessel Profiler
NAD83	North American Datum 1983
NAVD88	North American Vertical Datum 1988
N,E,S,W	North, East, South, West
NMO	Normal Moveout
NOAA	National Oceanic and Atmospheric Administration
nT	Nano Tesla
NYSERDA	New York State Energy Research and Development Authority
PAMS	Passive Acoustic Monitoring System

PDF	Portable Document Format
ppm	Pixels per meter
PPP	Precise Point Position
PSO	Protective Species Observer
QA	Quality Assurance
QC	Quality Control
r	Rotation
RTK	Real Time Kinematic
Rx	Receive
S	Second(s)
SBES	Single Beam Echosounder
SEGY	Society of Exploration Geophysicists File Format
SRME	2D – Surface Related Multiple Elimination
SRWEMA	2D – Surface Related Wave Equation Multiple Attenuation
SoW	Scope of Work
SSS	Side Scan Sonar
SVP	Sound Velocity Profiler
THU	Total Horizontal Uncertainty
TPU	Total Propagated Uncertainty
TVG	Time Variant Gain
TVU	Total Vertical Uncertainty
TWT	Two-Way Travel Time
Tx	Transmit
UHRS	Ultra-High Resolution Seismic
USBL	Ultra-Short Base Line
UTC	Coordinated Universal Time
(U)TM	(Universal) Transverse Mercator
UXO	Unexploded Ordnance
UW	Underwater
V	Velocity
WEA	Wind Energy Areas
WGS84	World Geodetic System 1984
WTG	Wind Turbine Generator

Executive Summary

Gardline Limited carried out a Geophysical Site Investigation for the New York State Energy Research and Development Authority (NYSERDA). The aims of the survey were to investigate the Hudson North Study Area (Subarea A) to obtain and make public high-quality seabed and shallow subsurface data sufficient for reducing lease holder uncertainty at the time of offtake and helping to advance the design and installation requirements for offshore wind farms in eventual final Wind Energy Areas (WEAs) within the study area including, but not limited to, foundations and cables.

The scope of work called for:

- An accurate bathymetric chart for the reconnaissance survey footprint.
- Information on the presence within the reconnaissance survey footprint of all seabed features of significance to the construction of wind farm facilities.
- A reconnaissance unconstrained geological model of the site.
- The current position of existing (in-service and out-of-service) cables and pipelines (subject to burial depth and limitations of proposed equipment).
- Input into the specifications and scope for a geotechnical sampling and testing program following the completion of the geophysical survey.
- A comprehensive interpretive report on the survey results obtained to assist design of the offshore foundations/structures and cable burial.

The survey consisted of 26 lines, 22 primary survey lines were oriented 0°/180° and four secondary survey lines (crosslines) were oriented 90°/270°. The survey was a reconnaissance level investigation with a primary line spacing of 900m (meters) and secondary line spacing of 4,500m.

Multibeam echosounder (MBES), side scan sonar (SSS), and gradiometer data were collected to provide information on the seabed conditions. Sub-bottom profiler (SBP) and multi-channel ultra-high resolution seismic (MUHRS) data were collected to aid the interpretation of the subsurface conditions. Most of the data were generally of good quality; however, data quality was occasionally compromised due to environmental conditions at the time of data collection.

Ripples were found at the seabed across the study area, implying the presence of mobile sediments. Within the study area, two known telecommunication cables are expected but could not be confidently identified with the collected geophysical data. Occasional sonar contacts were identified at the seabed, four of which are interpreted as debris. The remainder are interpreted as point contacts on the SSS data and thought to represent possible boulders (Chart Series J).

The subsurface conditions are complex (Chart Series Q). A layer of Holocene sediments, predominantly consisting of sand and gravelly sand (Chart Series M) overlies the Pleistocene Sediment Wedge. Channel systems are present within the Pleistocene Sediment Wedge, (Chart Series P). These sediments are likely to be highly variable in terms of grain size and spatial distribution. Raised amplitudes at the basal horizons are thought to represent coarse sediment lag deposits, but the presence of shallow gas cannot be ruled out. The Pleistocene Sediment Wedge is expected to consist of predominantly clay-rich sediments. The “R” Horizon separates the Pleistocene Sediment Wedge from the underlying Pleistocene Succession. The Pleistocene Succession is characterized by numerous dipping reflectors comprising predominantly sand and clay. Underlying this the Coastal Plain Deposits (Chart Series O) are expected to consist of nearly lithified, predominantly coarse-to-medium sand with occasional gravel, and possible organic matter.

The reconnaissance survey grid provided sufficient seabed and subsurface coverage to support site characterization. Interpretations of the geophysical data were completed along the grid with extrapolation of channels and horizons between the existing data corridors where appropriate, with a reduced level of confidence of interpolated, mapped features with distance away from the actual survey data. The existing data coverage can be used to aid in designing future geophysical surveys with the intent of developing a tighter data spacing in the future to support more detailed engineering and permitting needs.

Geotechnical testing is recommended to better delineate and characterize the subsurface geological conditions for wind turbine generator (WTG) foundations analysis. The Upper Pleistocene channeled and gravity flow units are interpreted to be highly variable, so extensive sampling (borings) and testing (CPTs) are prudent, both laterally and vertically.

ATTENTION

The online and archived versions of this report have been shortened for the purposes of reducing file size. A full version of the report is available by request at print@nyseda.ny.gov

Please reference report number 21-08 with your request

NYSERDA, a public benefit corporation, offers objective information and analysis, innovative programs, technical expertise, and support to help New Yorkers increase energy efficiency, save money, use renewable energy, and reduce reliance on fossil fuels. NYSERDA professionals work to protect the environment and create clean-energy jobs. NYSERDA has been developing partnerships to advance innovative energy solutions in New York State since 1975.

To learn more about NYSERDA's programs and funding opportunities, visit nyserda.ny.gov or follow us on Twitter, Facebook, YouTube, or Instagram.

**New York State
Energy Research and
Development Authority**

17 Columbia Circle
Albany, NY 12203-6399

toll free: 866-NYSERDA
local: 518-862-1090
fax: 518-862-1091

info@nyserda.ny.gov
nyserda.ny.gov



NYSERDA

State of New York

Andrew M. Cuomo, Governor

New York State Energy Research and Development Authority

Richard L. Kauffman, Chair | Doreen M. Harris, President and CEO